

# POWR-GARD® Fuse

## L60S/KLC SERIES TRADITIONAL HIGH-SPEED

600 V ac • Very Fast-Acting • 1–800 A



### Specifications

<b>Voltage Rating</b>	600 V ac
<b>Ampere Range</b>	1–800 A
<b>Interrupting Rating</b>	200 kA rms
<b>Approvals</b>	UL Recognized (File: E71611) CSA Recognized (File: LR29862)
<b>Country of Origin</b>	Mexico
<b>Operating Temperature</b>	-55 °C to +125 °C
<b>Storage Temperature</b>	Up to 35 °C with Relative Humidity <65 %

### Description

The L60S and KLC series is a traditional North American style high-speed fuse for protection of power semiconductor devices that are rated up to 600 V ac. These fuse series are typically used for replacement purposes only. For new designs L70QS series is recommended.

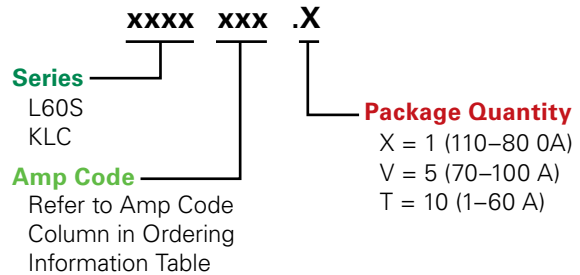
### Features/Benefits

- Compliance with US and Canadian requirements
- Traditional North American cylindrical & bolted style dimensions
- Class aR performance

### Applications

- Small power converters
- Power supplies
- Control circuits

### Part Numbering System



### Recommended Fuse Holders

1LFS101/1LFS102  
LSCR001/LSCR002

### Web Resources

For additional information, visit: [littelfuse.com/high-speed](http://littelfuse.com/high-speed)

### Ordering Information

See the next two pages.

# POWR-GARD® Fuse

## L60S/KLC SERIES TRADITIONAL HIGH-SPEED

### Ordering Information

L60S SERIES						
SERIES	AMPERAGE	AMPERE CODE	CATALOG NUMBER	ORDERING NUMBER	PACK QUANTITY	UPC
L60S	1	001.	L60S001	L60S001.T	10 Pcs/Box	07945810100
L60S	2	002.	L60S002	L60S002.T	10 Pcs/Box	07945810101
L60S	3	003.	L60S003	L60S003.T	10 Pcs/Box	07945810102
L60S	4	004.	L60S004	L60S004.T	10 Pcs/Box	07945810103
L60S	5	005.	L60S005	L60S005.T	10 Pcs/Box	07945810104
L60S	6	006.	L60S006	L60S006.T	10 Pcs/Box	07945810105
L60S	8	008.	L60S008	L60S008.T	10 Pcs/Box	07945810107
L60S	10	010.	L60S010	L60S010.T	10 Pcs/Box	07945810108
L60S	12	012.	L60S012	L60S012.T	10 Pcs/Box	07945810109
L60S	15	015.	L60S015	L60S015.T	10 Pcs/Box	07945810110
L60S	17.5	17.5	L60S17.5	L60S17.5T	10 Pcs/Box	07945810135
L60S	20	020.	L60S020	L60S020.T	10 Pcs/Box	07945810111
L60S	25	025.	L60S025	L60S025.T	10 Pcs/Box	07945810112
L60S	30	030.	L60S030	L60S030.T	10 Pcs/Box	07945810113
L60S	35	035.	L60S035	L60S035.T	10 Pcs/Box	07945810114
L60S	40	040.	L60S040	L60S040.T	10 Pcs/Box	07945810115
L60S	45	045.	L60S045	L60S045.T	10 Pcs/Box	07945810116
L60S	50	050.	L60S050	L60S050.T	10 Pcs/Box	07945810117
L60S	60	060.	L60S060	L60S060.T	10 Pcs/Box	07945810118
L60S	70	070.	L60S070	L60S070.V	5 Pcs/Box	07945810119
L60S	80	080.	L60S080	L60S080.V	5 Pcs/Box	07945810120
L60S	90	090.	L60S090	L60S090.V	5 Pcs/Box	07945810121
L60S	100	100.	L60S100	L60S100.V	5 Pcs/Box	07945810122
L60S	125	125.	L60S125	L60S125.X	1 Pcs/Box	07945810123
L60S	150	150.	L60S150	L60S150.X	1 Pcs/Box	07945810124
L60S	175	175.	L60S175	L60S175.X	1 Pcs/Box	07945810125
L60S	200	200.	L60S200	L60S200.X	1 Pcs/Box	07945810126
L60S	225	225.	L60S225	L60S225.X	1 Pcs/Box	07945810137
L60S	250	250.	L60S250	L60S250.X	1 Pcs/Box	07945810127
L60S	300	300.	L60S300	L60S300.X	1 Pcs/Box	07945810128
L60S	350	350.	L60S350	L60S350.X	1 Pcs/Box	07945810129
L60S	400	400.	L60S400	L60S400.X	1 Pcs/Box	07945810130
L60S	450	450.	L60S450	L60S450.X	1 Pcs/Box	07945810131
L60S	500	500.	L60S500	L60S500.X	1 Pcs/Box	07945810132
L60S	600	600.	L60S600	L60S600.X	1 Pcs/Box	07945810133
L60S	700	700.	L60S700	L60S700.X	1 Pcs/Box	07945810136
L60S	800	800.	L60S800	L60S800.X	1 Pcs/Box	07945810134

Note: High-Speed fuses are designed for fixed installations. They are not intended for use in moving vehicle applications.

# POWR-GARD® Fuse

## L60S/KLC SERIES TRADITIONAL HIGH-SPEED

### Ordering Information

KLC* SERIES						
SERIES	AMPERAGE	AMPERE CODE	CATALOG NUMBER	ORDERING NUMBER	PACK QUANTITY	UPC
KLC	1	001.	KLC001	OKLC001.T	10 Pcs/Box	07945823031
KLC	2	002.	KLC002	OKLC002.T	10 Pcs/Box	07945823041
KLC	3	003.	KLC003	OKLC003.T	10 Pcs/Box	07945823047
KLC	4	004.	KLC004	OKLC004.T	10 Pcs/Box	07945823053
KLC	5	005.	KLC005	OKLC005.T	10 Pcs/Box	07945823055
KLC	6	006.	KLC006	OKLC006.T	10 Pcs/Box	07945823058
KLC	7	007.	KLC007	OKLC007.T	10 Pcs/Box	07945823061
KLC	8	008.	KLC008	OKLC008.T	10 Pcs/Box	07945823063
KLC	10	010.	KLC010	OKLC010.T	10 Pcs/Box	07945823065
KLC	12	012.	KLC012	OKLC012.T	10 Pcs/Box	07945823066
KLC	15	015.	KLC015	OKLC015.T	10 Pcs/Box	07945823068
KLC	17.5	17.5	KLC17.5	OKLC17.5T	10 Pcs/Box	07945823069
KLC	20	020.	KLC020	OKLC020.T	10 Pcs/Box	07945823071
KLC	25	025.	KLC025	OKLC025.T	10 Pcs/Box	07945823072
KLC	30	030.	KLC030	OKLC030.T	10 Pcs/Box	07945823073
KLC	35	035.	KLC035	OKLC035.T	10 Pcs/Box	07945823074
KLC	40	040.	KLC040	OKLC040.T	10 Pcs/Box	07945823075
KLC	45	045.	KLC045	OKLC045.T	10 Pcs/Box	07945823076
KLC	50	050.	KLC050	OKLC050.T	10 Pcs/Box	07945823077
KLC	60	060.	KLC060	OKLC060.T	10 Pcs/Box	07945823078
KLC	70	070.	KLC070	OKLC070.V	5 Pcs/Box	07945823079
KLC	80	080.	KLC080	OKLC080.V	5 Pcs/Box	07945823080
KLC	90	090.	KLC090	OKLC090.V	5 Pcs/Box	07945823081
KLC	100	100.	KLC100	OKLC100.V	5 Pcs/Box	07945823082
KLC	110	110.	KLC110	OKLC110.X	1 Pcs/Box	07945823083
KLC	125	125.	KLC125	OKLC125.X	1 Pcs/Box	07945823084
KLC	150	150.	KLC150	OKLC150.X	1 Pcs/Box	07945823086
KLC	175	175.	KLC175	OKLC175.X	1 Pcs/Box	07945823087
KLC	200	200.	KLC200	OKLC200.X	1 Pcs/Box	07945823088
KLC	225	225.	KLC225	OKLC225.X	1 Pcs/Box	07945823089
KLC	250	250.	KLC250	OKLC250.X	1 Pcs/Box	07945823090
KLC	300	300.	KLC300	OKLC300.X	1 Pcs/Box	07945823091
KLC	350	350.	KLC350	OKLC350.X	1 Pcs/Box	07945823092
KLC	400	400.	KLC400	OKLC400.X	1 Pcs/Box	07945823093
KLC	450	450.	KLC450	OKLC450.X	1 Pcs/Box	07945823095
KLC	500	500.	KLC500	OKLC500.X	1 Pcs/Box	07945823096
KLC	600	600.	KLC600	OKLC600.X	1 Pcs/Box	07945823098
KLC	700	700.	KLC700	OKLC700.X	1 Pcs/Box	07945823101
KLC	800	800.	KLC800	OKLC800.X	1 Pcs/Box	07945823103

\*KLC series fuses are recommended for replacement use only.

*Note: High-Speed fuses are designed for fixed installations. They are not intended for use in moving vehicle applications.*

**Dimensions**

AMPERE RATING	FIG. NO.	DIMENSIONS INCHES (MM)							
		A	B	C	D	E	F	G	H
<b>L60S SERIES, 600 V AC</b>									
1 – 30	1	5 (127.0)	—	5/8 (15.9)	13/16 (20.6)	—	—	—	—
31 – 60	2	2 <sup>25</sup> / <sub>32</sub> (70.6)	3 <sup>7</sup> / <sub>16</sub> (87.3)	3 <sup>11</sup> / <sub>16</sub> (93.7)	4 <sup>3</sup> / <sub>8</sub> (111.1)	1 <sup>3</sup> / <sub>16</sub> (20.6)	2 <sup>9</sup> / <sub>32</sub> (18.3)	1 <sup>1</sup> / <sub>32</sub> (8.7)	1/8 (3.2)
61 – 100	2	2 <sup>29</sup> / <sub>32</sub> (73.8)	3 <sup>17</sup> / <sub>32</sub> (89.7)	3 <sup>25</sup> / <sub>32</sub> (96.0)	4 <sup>15</sup> / <sub>32</sub> (113.5)	1 <sup>1</sup> / <sub>16</sub> (27.0)	2 <sup>9</sup> / <sub>32</sub> (18.3)	1 <sup>1</sup> / <sub>32</sub> (8.7)	1/8 (3.2)
101 – 200	2	2 <sup>29</sup> / <sub>32</sub> (73.8)	3 <sup>9</sup> / <sub>16</sub> (90.5)	3 <sup>3</sup> / <sub>4</sub> (95.3)	4 <sup>13</sup> / <sub>32</sub> (111.9)	1 <sup>5</sup> / <sub>16</sub> (33.3)	1 (25.4)	5/16 (7.9)	3/16 (4.8)
201 – 400	2	2 <sup>29</sup> / <sub>32</sub> (73.8)	3 <sup>31</sup> / <sub>32</sub> (100.8)	4 <sup>5</sup> / <sub>32</sub> (105.6)	5 <sup>1</sup> / <sub>8</sub> (130.2)	1 <sup>37</sup> / <sub>64</sub> (40.1)	1 (25.4)	1 <sup>3</sup> / <sub>32</sub> (10.3)	1/4 (6.4)
401 – 600	2	2 <sup>7</sup> / <sub>8</sub> (73.0)	3 <sup>31</sup> / <sub>32</sub> (100.8)	4 <sup>9</sup> / <sub>64</sub> (105.2)	5 <sup>1</sup> / <sub>8</sub> (130.2)	2 <sup>1</sup> / <sub>16</sub> (52.8)	1 <sup>1</sup> / <sub>2</sub> (38.1)	1 <sup>3</sup> / <sub>32</sub> (10.3)	1/4 (6.4)
601 – 800	2	3 <sup>1</sup> / <sub>32</sub> (77.0)	5 <sup>5</sup> / <sub>32</sub> (133.4)	5 <sup>11</sup> / <sub>32</sub> (135.7)	7 <sup>1</sup> / <sub>4</sub> (184.2)	2 <sup>1</sup> / <sub>2</sub> (63.5)	2 (50.8)	1 <sup>7</sup> / <sub>32</sub> (13.5)	3/8 (9.5)
<b>KLC SERIES, 600 V AC</b>									
1 – 30	2	1 <sup>7</sup> / <sub>8</sub> (47.6)	2 <sup>1</sup> / <sub>2</sub> (63.5)	—	2 <sup>7</sup> / <sub>8</sub> (73.0)	9/16 (14.3)	1 <sup>3</sup> / <sub>32</sub> (10.3)	1/4 (6.4)	3/64 (1.2)
31 – 60	2	2 <sup>3</sup> / <sub>4</sub> (69.9)	3 <sup>3</sup> / <sub>8</sub> (85.7)	3 <sup>5</sup> / <sub>8</sub> (92.1)	4 <sup>5</sup> / <sub>16</sub> (109.5)	1 <sup>3</sup> / <sub>16</sub> (20.6)	2 <sup>9</sup> / <sub>32</sub> (18.3)	1 <sup>1</sup> / <sub>32</sub> (8.7)	1/8 (3.2)
61 – 100	3	2 <sup>7</sup> / <sub>8</sub> (73.0)	3 <sup>21</sup> / <sub>32</sub> (92.9)	4 <sup>1</sup> / <sub>16</sub> (103.2)	5 (127.0)	1 (25.4)	3/4 (19.1)	1 <sup>3</sup> / <sub>32</sub> (10.3)	1/8 (3.2)
101 – 200	3	2 <sup>27</sup> / <sub>32</sub> (72.2)	3 <sup>17</sup> / <sub>32</sub> (89.7)	4 <sup>3</sup> / <sub>8</sub> (111.1)	5 <sup>3</sup> / <sub>32</sub> (129.4)	1 <sup>1</sup> / <sub>2</sub> (38.1)	1 (25.4)	1 <sup>3</sup> / <sub>32</sub> (10.3)	1/4 (6.4)
201 – 400	3	2 <sup>27</sup> / <sub>32</sub> (72.2)	4 <sup>21</sup> / <sub>32</sub> (118.3)	4 <sup>27</sup> / <sub>32</sub> (123.0)	6 <sup>1</sup> / <sub>4</sub> (158.8)	2 (50.8)	1 <sup>5</sup> / <sub>8</sub> (41.3)	9/16 (14.3)	1/4 (6.4)
401 – 800	3	2 <sup>27</sup> / <sub>32</sub> (72.2)	4 <sup>21</sup> / <sub>32</sub> (118.3)	5 <sup>11</sup> / <sub>32</sub> (135.7)	6 <sup>1</sup> / <sub>4</sub> (158.8)	2 <sup>1</sup> / <sub>2</sub> (63.5)	2 (50.8)	9/16 (14.3)	3/8 (9.5)

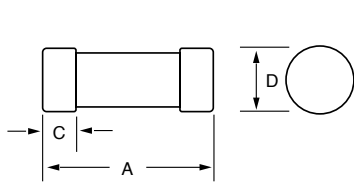


Fig. 1

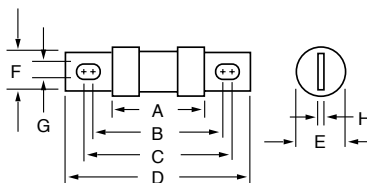


Fig. 2

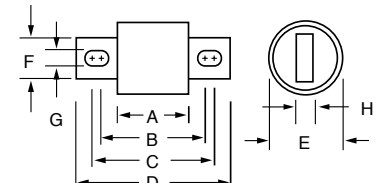


Fig. 3

*Note: High-Speed fuses are designed for fixed installations. They are not intended for use in moving vehicle applications.*

**Disclaimer Notice** – Littelfuse products are not designed for, and shall not be used for, any purpose (including, without limitation, automotive, military, aerospace, medical, life-saving, life-sustaining or nuclear facility applications, devices intended for surgical implant into the body, or any other application in which the failure or lack of desired operation of the product may result in personal injury, death, or property damage) other than those expressly set forth in applicable Littelfuse product documentation. Warranties granted by Littelfuse shall be deemed void for products used for any purpose not expressly set forth in applicable Littelfuse documentation. Littelfuse shall not be liable for any claims or damages arising out of products used in applications not expressly intended by Littelfuse as set forth in applicable Littelfuse documentation. The sale and use of Littelfuse products is subject to Littelfuse Terms and Conditions of Sale, unless otherwise agreed by Littelfuse.

[Littelfuse.com/Product-Disclaimer](http://Littelfuse.com/Product-Disclaimer)