

4

3

2

1

THIS DRAWING IS UNPUBLISHED.

RELEASED FOR PUBLICATION

© COPYRIGHT

ALL RIGHTS RESERVED.

LOC DIST


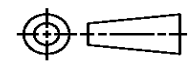
REVISIONS

P	LTR	DESCRIPTION	DATE	DWN	APVD
	A1	ECR-16-011294	06AUG2016	GK	SD

REPLACED BY OCEAN STYLE APPLICATOR PART NUMBER 2150690-1

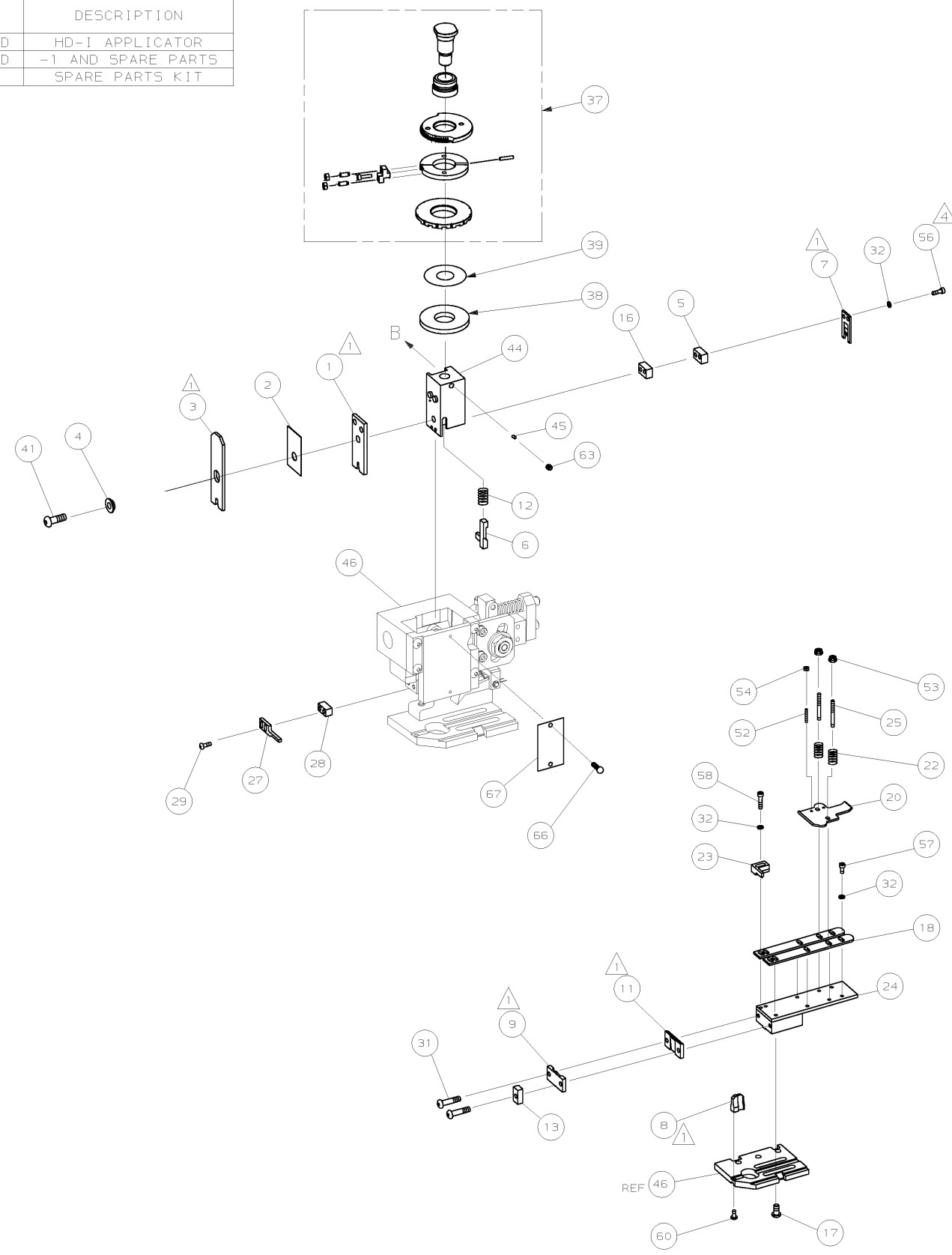
FOR REPLACEMENT PARTS FOR APPLICATOR 1529086
REFER TO ADDITIONAL PAGE(S). SPARE PARTS KIT (IF LISTED)
WILL REMAIN AVAILABLE.

THE REPLACEMENT OCEAN STYLE APPLICATOR HAS THE
SAME TERMINATOR/PRESS INTERFACE AS APPLICATOR
1529086

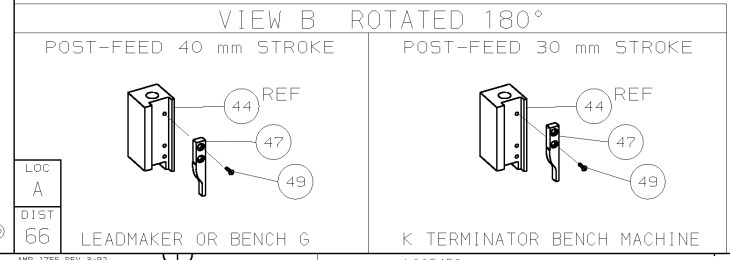
THIS DRAWING IS A CONTROLLED DOCUMENT.		DWN	GOPALAKRISHNA HV		 TE Connectivity
DIMENSIONS:		CHK	GOPALAKRISHNA HV		
		TOLERANCES UNLESS OTHERWISE SPECIFIED:		APVD	NAME
		0 PLC ± 1 PLC ± 2 PLC ± 3 PLC ± 4 PLC ± ANGLES ±		STOUGH DALE	FINE ADJ END FD HD-I APPL
MATERIAL		FINISH		PRODUCT SPEC	RESTRICTED TO
				APPLICATION SPEC	SIZE
				WEIGHT	CAGE CODE
				CUSTOMER DRAWING	DRAWING NO
					©- 1529086
				SCALE	SHEET 1 OF 2
					REV A1

PART NUMBER	REV	FIRST USED	TERMINATOR	FEED TYPE	DESCRIPTION
1529086-1	A	-	BENCH & LEADMAKER	MECH POST FEED	HD-1 APPLICATOR
7-1529086-1	A	-	BENCH & LEADMAKER	MECH POST FEED	-1 AND SPARE PARTS
7-1529086-7	A	-	-	-	SPARE PARTS KIT

CRIMP DATA AMP TERMINAL AMP CRIMP SPECS			
TERMINAL NAME: .110 SRS MINIATURE FASTON RECEPTACLE			
CRIMP	SIZE	TYPE	RANGE
WIRE	1.78 [.070 IN]	F	24 - 20 AWG
INSUL	2.79 [.110 IN]	F	2.03-3.05 [.080-.120 IN]
WIRE STRIP LENGTH		APPL INSTRUCTION	
3.90-4.70 [.154-.185 IN]		408-8323 & 408-8490	
TERMINAL		FEED	
APPL SPEC 114-3118		16.89 [.665 IN]	
TERMINALS APPLIED			
150500	153213	-	-
150501	150568	-	-
150517	-	-	-
150545	-	-	-
150577	-	-	-
150587	-	-	-
150651	-	-	-
151304	-	-	-
WIRE SIZE	CRIMP HEIGHT	REF SETTING	
mm ² AWG	*	*	
20 AWG	0.89 ±0.05 [.035 ±.002 IN]	B5	
22 AWG	0.79 ±0.05 [.031 ±.002 IN]	C2	
24 AWG	0.74 ±0.05 [.029 ±.002 IN]	C6	



- 1. RECOMMENDED SPARE PARTS.
- 2. GREASE RAM, CAM, CAM FOLLOWER AND FEED ROD LIGHTLY.
- 3. LUBRICATE DAILY PER THE APPLICATOR INSTRUCTION SHEET SUPPLIED WITH THE APPLICATOR.
- 4. CUT TO LENGTH AT ASSEMBLY.



* WARNING:
ON INSTALLATION, SET WIRE DISC TO LARGEST WIRE SIZE SETTING. USE OF SETTINGS BELOW MIN REQ'D CRIMP HEIGHT SETTING WILL CAUSE DAMAGE TO CRIMP TOOLING.

QTY	REQD	PER ASSY	PART NO	DESCRIPTION	ITEM NO
-	1	1	1529086	PRINT, APPLICATOR LOG SHEET	73
-	1	1	1338705-4	DOCUMENTATION PACKAGE	72
-	-	-	-	-	71
-	-	-	-	-	70
-	-	-	-	-	69
-	-	-	-	-	68
-	1	1	461264-5	PLATE, IDENTIFICATION	67
-	2	2	21017-2	SCR,DRIVE (#2X.19) ID PLATE	66
-	-	-	-	-	65
-	-	-	-	-	64
-	1	1	3-18031-0	SCR,SKT SET (M6X6) RAM	63
-	-	-	-	-	62
-	-	-	-	-	61
-	1	1	18024-7	SCR,BHC (M4X10) ANVIL	60
-	-	-	-	-	59
-	2	2	1-18023-3	SCR,SHC (M4X16) HOLD DOWN	58
-	5	5	18023-9	SCR,SHC (M4X6) STRIP GUIDE	57
-	2	2	1-18023-2	SCR,SHC (M4X12) SLUG BLADE	56
-	-	-	-	-	55
-	2	2	18029-1	NUT,HEX (M3) DRAG	54
-	2	2	986965-1	NUT,HEX SL (M4) DRAG STUD	53
-	2	2	2-18032-2	SCR,SKT SET (M3X10) DRAG	52
-	-	-	-	-	51
-	-	-	-	-	50
-	1	1	18024-3	SCR,BHC (M3X10) CAM	49
-	-	-	-	-	48
-	1	1	1338676-1	CAM, POST-FEED 30 & 40 mm ST	47
-	1	1	1338662-1	APPLICATOR, BASIC (SUBASSY)	46
-	1	1	690191-1	PLUG, NYLON	45
-	1	1	1320998-1	RAM	44
-	-	-	-	-	43
-	-	-	-	-	42
-	1	1	2-18024-6	SCREW,BHC (M8X25) CRIMPER	41
-	-	-	-	-	40
-	1	1	690125-1	SHIM SUBASSY	39
-	1	1	469367-7	SPACER, FINE ADJUST	38
-	1	1	879103-2	FINE ADJUST HEAD SUBASSY	37
-	-	-	-	-	36
-	-	-	-	-	35
-	-	-	-	-	34
-	-	-	-	-	33
-	9	9	18025-2	WASHER, LOCK (M4) SHEAR BL	32
-	2	2	1-18024-0	SCR,BHC (M4X20) SHEAR PL	31
-	-	-	-	-	30
-	2	2	18024-8	SCR,BHC (M4X12) STRIPPER	29
-	1	1	3-690451-2	SPACER, STRIPPER	28
-	1	1	240639-1	STRIPPER	27
-	-	-	-	-	26
-	2	2	1320906-1	DRAG, STUD	25
-	1	1	1320995-1	STRIP GUIDE	24
-	1	1	240825-4	PLATE, STRIP HOLD DOWN	23
-	2	2	4-22281-1	SPRING, DRAG	22
-	-	-	-	-	21
-	1	1	1338665-1	DRAG, STOCK	20
-	-	-	-	-	19
-	2	2	1338663-3	GUIDE, LOWER STRIP	18
-	4	4	1-18024-8	SCR,BHC (M6X12) STRIP GD PL	17
-	1	1	1338708-1	SPACER, SLUG BLADE	16
-	-	-	-	-	15
-	-	-	-	-	14
-	1	1	1-690481-5	SPACER, HOLD DOWN	13
-	1	1	23846-1	SPRING, HOLD DOWN	12
-	1	1	240644-1	PLATE, REAR SHEAR	11
-	-	-	-	-	10
-	1	1	1-690495-2	PLATE, FRONT SHEAR	9
-	1	2	1333215-5	ANVIL	8
-	1	1	690474-6	BLADE, SLUG	7
-	1	1	455892-7	HOLD DOWN, TERMINAL	6
-	1	1	3-240641-3	SPACER, SLUG BLADE	5
-	1	1	238009-1	SPACER, BLOCK CRIMPER	4
-	1	2	1-456134-5	CRIMPER, INSULATION	3
-	1	1	455888-7	SPACER, CRIMPER	2
-	1	2	1-456404-8	CRIMPER, WIRE	1

QTY REQD PER ASSY		PARTS LIST	
MATL	HT TR	FIN	
DR L. LOFTHOUSE	APP F. BACKHURST	AMP Tyco Electronics Harrisburg, PA 17105-3608	
CHK -	REL 15-01-04	M. CLIFFORD	
NAME FINE ADJ END FD HD-1 APPL		MACHINE REF HD-1 APPL	
SCALE -	DWG NO 1529086	SHEET 1 OF 1 REV A	
CUSTOMER AND ASSEMBLY DRAWING			

THIS DRAWING IS A CONTROLLED DOCUMENT

LAYOUT L1339521

SET UP GAGE 458638-3

20

RELEASED FOR PUBLICATION BY AMP INCORPORATED. ALL RIGHTS RESERVED.

THIS DRAWING IS UNRELEASABLE

AMP 1756 REV 3-92