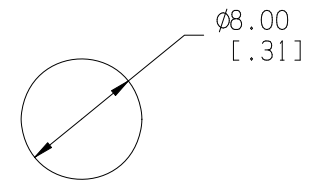
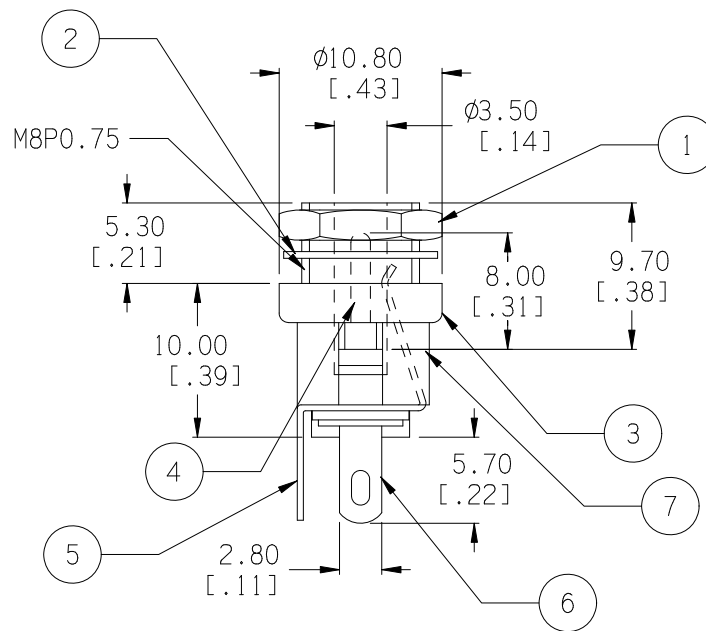
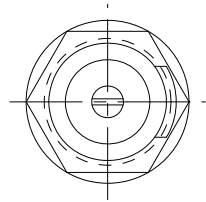


ELECTRICAL SPECS:

1. LIFE: 10,000 INSERTION/WITHDRAWAL CYCLE MINIMUM
2. CONTACT RESISTANCE: 50mΩ MAXIMUM
3. INSULATION RESISTANCE: 1000mΩ MINIMUM
4. DIELECTRIC WITHSTANDING VOLTAGE: 500AC MAXIMUM
5. MAXIMUM RATING: 5A, 12V DC

ROHS 2 COMPLIANT



PANEL CUT-OUT

Date	SYM	REVISION RECORD	AUTH	DR.	CK.
02/07/04	A	REVISED TITLE	T.B.	B.S.	
05/08/04	B	ADDED ELECTRICAL SPECS	T.B.	B.S.	
12/05/14	C	UPDATED TO ROHS 2 COMPLIANT	T.B.	B.S.	

ITEM NO.	PART NAME	MATL. SPECIFICATION	Tolerance (Inches)	MPD Memory Protection Devices, Inc. 200 Broad Hollow Road, Farmingdale, New York 11735	
1	HEX. NUT	BRASS, NICKLE PLTD.	Decimal	Scale	Drawn By B.S.
2	FLAT WASHER	IRON, NICKLE PLTD.			
3	TOP HOUSING	BRASS, NICKLE PLTD.	±.5 (.020)	Title	DC JACK - CHASSIS MOUNT, OPEN CIRCUIT, SOLDER LUGS, 1.3 X 3.5mm
4	PIN (Ø1.3)	BRASS, NICKLE PLTD.			
5	SOLDER TERMINAL	COPPER, SILVER PLTD.	Fractional	Date	Drawing Number
6	SOLDER TERMINAL	PHOS. BRONZE, SILVER PLTD.			
7	BOTTOM HOUSING	NYLON, BLACK	Angular	12/05/14	EJ501C
			± 3°		

Approved By T.B.