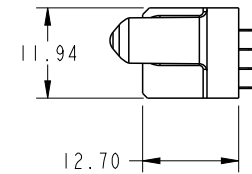
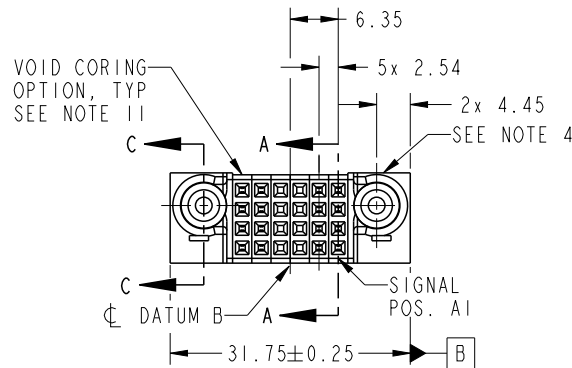
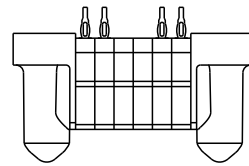


PRODUCT NO. 51940-566-- NOTE: 3	ROWS D C B A	SIGNAL							
		E2	6	5	4	3	2	1	E1
			F	F	X	X	F	F	
			F	F	X	X	F	F	
			F	F	X	X	F	F	
			F	F	X	X	F	F	

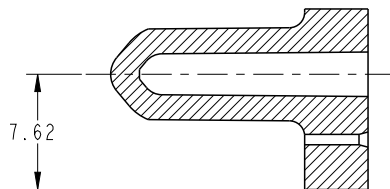
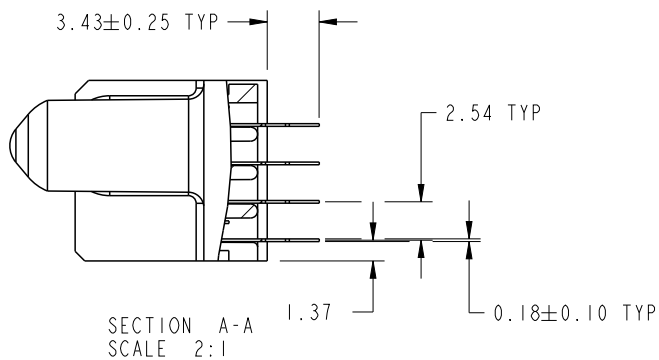


CODE	DIM "M" MATING LENGTH	CONTACT TYPE
F	[N/A]	SIGNAL
X	[N/A]	SIGNAL

spec ref	*	dr	Luo Weller	2015/03/09	projection	MM	size	A4	scale	1:1
tolerance std	TOLERANCES UNLESS OTHERWISE SPECIFIED	eng	Luo Weller	2015/04/29		←→	ecn no	-		
SEE NOTE		chr	Fancy Zhang	2015/04/29			product family	PwrBlade	rel level	Released
surface	linear	0.X	±0.5		title	8S+8S	dwg no	51940-566	rev	A
		0.XX	±0.25							
		0.XXX	±0.1							
	angular	0°	±2°	www.fci.com	cat. no.	*	Product - Customer Drw	sheet 1 of 4		

PRODUCT NUMBER

51940-566__
NOTE: 3



SECTION C-C
SCALE 2:1

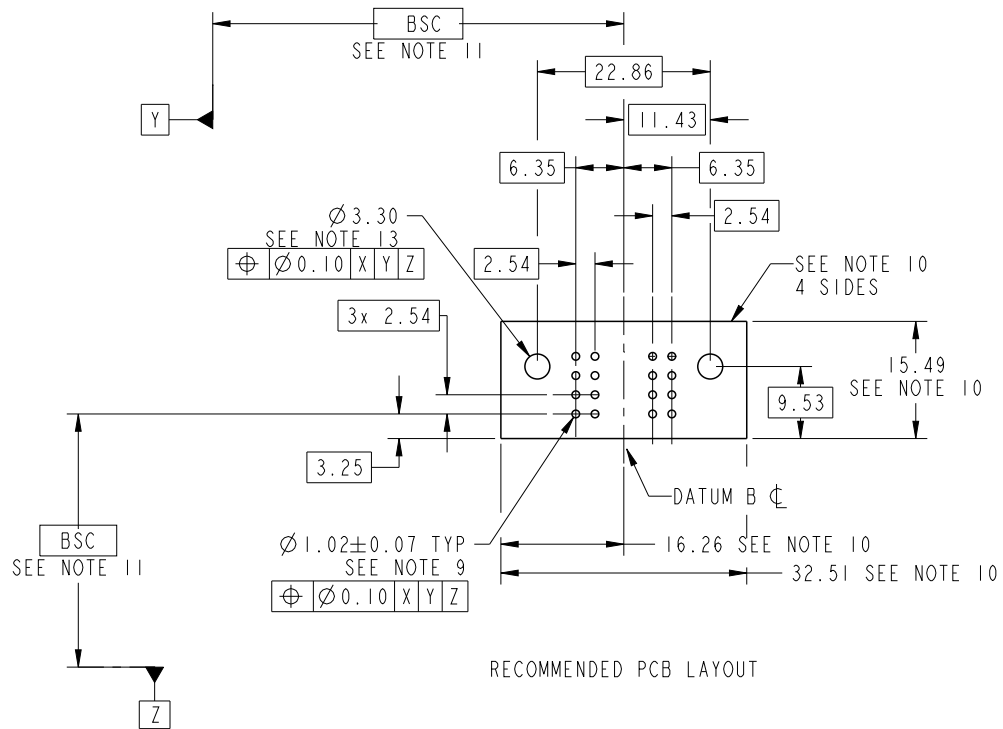
dr	Luo Weller	2015/03/09	projection 	MM ←————→	size	A4	scale	1:1	
eng	Luo Weller	2015/04/29			ecn no	-			
chr	Fancy Zhang	2015/04/29			product family	PwrBlade	rel level	Released	
appr	Pei-Ming Zheng	2015/04/29			rev	A			
		title			8S+8S		dwg no		51940-566
www.fci.com		cat. no.			* Product - Customer Drw		sheet 2 of 4		
		VERTICAL PF RECEPT							



Copyright FCI.

PRODUCT NUMBER

51940-566__
NOTE: 3



RECOMMENDED PCB LAYOUT

dr	Luo Weller	2015/03/09	projection 	MM 	size	A4	scale	1:1
eng	Luo Weller	2015/04/29			ecn no	-		
chr	Fancy Zhang	2015/04/29			rel level	Released		
appr	Pei-Ming Zheng	2015/04/29	product family	PwrBlade				
	title	8S+8S		dwg no	51940-566		rev	A
www.fci.com	cat. no.	*	Product - Customer Drw		sheet 3 of 4			

PRODUCT NUMBER

51940-566--
NOTE: 3

NOTES:

1. DIMENSIONS AND TOLERANCES ARE IN ACCORDANCE WITH ASME Y14.5M, 1994 UNLESS OTHERWISE SPECIFIED.

CONNECTOR NOTES:

- 2 HOUSING MATERIAL: UL 94 V-0 GLASS FILLED HIGH-TEMP THERMOPLASTIC
POWER CONTACT MATERIAL: COPPER ALLOY
SIGNAL PIN MATERIAL: COPPER ALLOY
- 3. SEE ITEM 5 & 6 IN PRINT 10064183 FOR PLATING SPEC OF 51940-566 AND 51940-566LF RESPECTIVELY.
- 4 MANUFACTURER'S NAME, DATE CODE AND OPTIONAL P/N TO APPEAR ON THIS SURFACE. THE MARK CAN BE OMITTED IF THERE IS NOT ENOUGH SPACE ON THIS SURFACE.
- 5. PRODUCT SPECIFICATION GS-12-149.
APPLICATION SPECIFICATION BUS-20-067.
- 6. PACKAGED IN TRAYS.
PCB NOTES:
- 7. ALL HOLE DIAMETERS ARE FINISHED HOLE SIZE.
- 8 MOUNTING HOLES, WHERE APPLICABLE, ARE UNPLATED.
- 9 $\varnothing 1.151 \pm 0.025$ DRILLED HOLES PLATED WITH
0.008 MIN SnPb OR Sn OVER 0.03
TO 0.08 Cu PLATING TO ACHIEVE
 $\varnothing 1.02 \pm 0.07$ HOLE.
- 10 CONNECTOR KEEP-OUT ZONE.
- 11. THE VOID CORING IN BETWEEN POWER MODULES, SIGNAL MODULES AND END MODULES ARE OPTIONAL AND THE SHAPE MAY BE DIFFERENT FOR OPTIMIZE THE MOLDING PROCESS. THE VOID CORING WILL NOT EFFECT TO PRODUCT FUNCTION.
- 12. DATUM AND BASIC DIMENIONS ARE ESTABLISHED BY CUSTOMER.
- 13. RECOMMENDED RETENTION TO PCB
 $\varnothing 3.30$ THRU HOLE FOR #5 SOCKET CAP SCREW
MAX. HEAD 5.21 RECOMMENDED SCREW LENGTH 12MM + PCB THICKNESS.
RECOMMENDED SCREW SEATING TO PCB TORQUE: 2300 - 5760 gf-cm.

dr	Luo Weller	2015/03/09	projection 	MM 	size	A4	scale	1:1		
eng	Luo Weller	2015/04/29			ecn no	-				
chr	Fancy Zhang	2015/04/29			product family	PwrBlade	rel level	Released		
appr	Pei-Ming Zheng	2015/04/29	FCj		title	8S+8S	dwg no	51940-566	rev	A
www.fci.com		cat. no.	*	Product - Customer Drw			sheet 4 of 4			