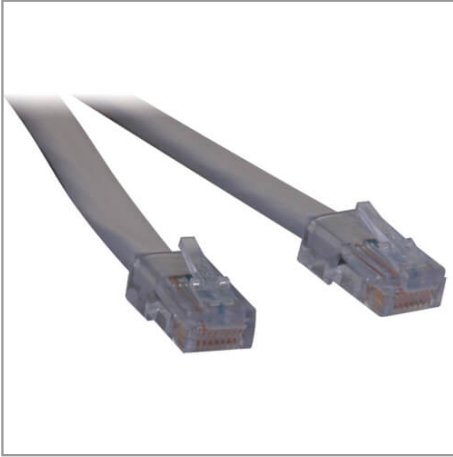


T1 Shielded RJ48C Ethernet Cable (RJ45 M/M), 3 ft. (0.91 m) TAA

MODEL NUMBER: N265-003



Highlights

- 22AWG, 100ohm T1 Rated Cable
- Connects your T1 CSU/DSU
- Meets ANSI T1.403 Cabling Requirement
- Compliant with the Federal Trade Agreements Act (TAA) for GSA Schedule purchases

Package Includes

3-ft. (0.91 m) T1 Shielded RJ48C Patch Cable

Description

These T1, RJ45-RJ45 (RJ48C) Ethernet cables are constructed with premium Quabbin 9720, T1-certified cable. Two individually shielded, 22 AWG, 100 ohm pairs maximize the performance of your expensive T1 circuits and equipment. Beware of generic T1 Ethernet cables made with inexpensive Cat5 unshielded Ethernet cable. The American National Standards Institute (ANSI) states in ANSI T1.403 that T1 cable be constructed of two balanced pairs, 22 AWG Solid conductor, 100 ohm impedance, with a loss budget of 5.5 db. Straight-through wiring configuration available in 3-foot (0.9-meter), 5-foot (1.5-meter), 7-foot (2.1-meter) and 10-foot (3.1-meter) lengths. Custom lengths available. Consult your reseller. Also available in crossover wiring configuration. See N266-Series T1 Ethernet cables.

Features

- ANSI certified T1 cable, Levels 1, 1A, and 1C
- Complies with ANSI T1.403 Carrier-to-Customer Installation-DS1 Metallic Interface
- Straight through T1 wiring configuration
- Available in 3-ft. (0.91 m), 5-ft. (1.52 m), 7-ft. (2.13 m), and 10-ft. (3.05 m) stocked lengths
- Custom length cables available
- NEC (UL) Type CMR
- Available in Crossover wiring configurations
- 22AWG Solid Tinned Copper

Specifications

| OVERVIEW | |
|------------|--------------|
| UPC Code | 037332150301 |
| Technology | T1 |
| PHYSICAL | |

| | |
|--------------------------------------|----------------------------|
| Cable Jacket Color | Beige |
| Cable Jacket Rating | CMR |
| Cable Shielding | STP |
| Number of Conductors | 4 Pair |
| Conductor Material | Solid Copper |
| Cable Length (ft.) | 3 |
| Cable Length (m) | 0.91 |
| Cable Length (in.) | 36 |
| Cable Length (cm) | 91.4 |
| Shipping Dimensions (hwd / in.) | 0.10 x 7.60 x 8.60 |
| Shipping Dimensions (hwd / cm) | 0.25 x 19.30 x 21.84 |
| Shipping Weight (lbs.) | 0.10 |
| Shipping Weight (kg) | 0.05 |
| CONNECTIONS | |
| Side A - Connector 1 | RJ45 (MALE) |
| Side B - Connector 1 | RJ45 (MALE) |
| Crossover Wiring | No |
| Angled Connector | No |
| FEATURES & SPECIFICATIONS | |
| Antibacterial | No |
| IP68 Rated | No |
| Snagless Connector | No |
| STANDARDS & COMPLIANCE | |
| Product Compliance | Trade Agreements Act (TAA) |
| WARRANTY & SUPPORT | |
| Product Warranty Period (Worldwide) | Lifetime limited warranty |