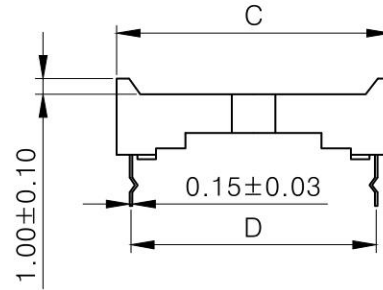
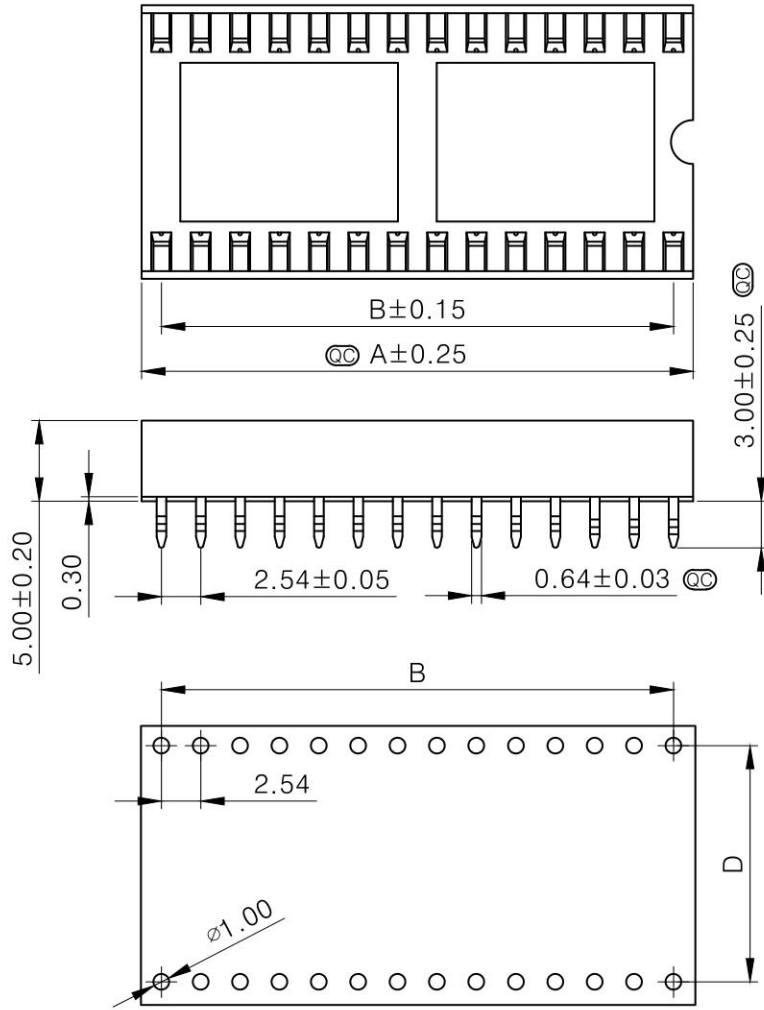


### Dimensions

No.Of Contacts	A	B	C	D
24	30.48	27.94	17.64	15.24
28	35.56	33.02	17.64	15.24
32	40.64	38.10	17.64	15.24
40	50.80	48.26	17.64	15.24
42	53.34	50.80	17.64	15.24
48	60.96	58.42	17.64	15.24



**Technical Specs:**  
 Insulator: Black glass filled polyester PBT-GF30-FR  
 Flammability: UL 94V-0  
 Contacts: Brass  
 Mechanical life: min 50 cycles  
 Rated current: 3 A  
 Contact resistance: max 20 Milliohms  
 Dielectric strength: min 1000 V RMS  
 Ⓞ Important Dimensions

P.C. Board Layout

E			Units	mm	Scale	2:1	Drawing By	Date	<b>CnC Tech, LLC</b> Industrial Cable and Connector Technology				
D			Tolerance Unless Otherwise Specified			Lin-Wu	2019/06/06						
C			.X ~ ±0.30			Revised By	Date	Sheet	1 of 1	Title	IC Socket Pitch:2.54mm		
B			.XX ~ ±0.25			YP-Liang	2019/06/06	Third Angle Projection		Part No.	245-XX-1-06	REV	A
A	RELEASED	06/06/19	.XXX ~ ±0.20			Approval By	Date						
REV	DESCRIPTION.	Date	Angle ~ ± 3°			Kirby-Xiao	2019/06/06						