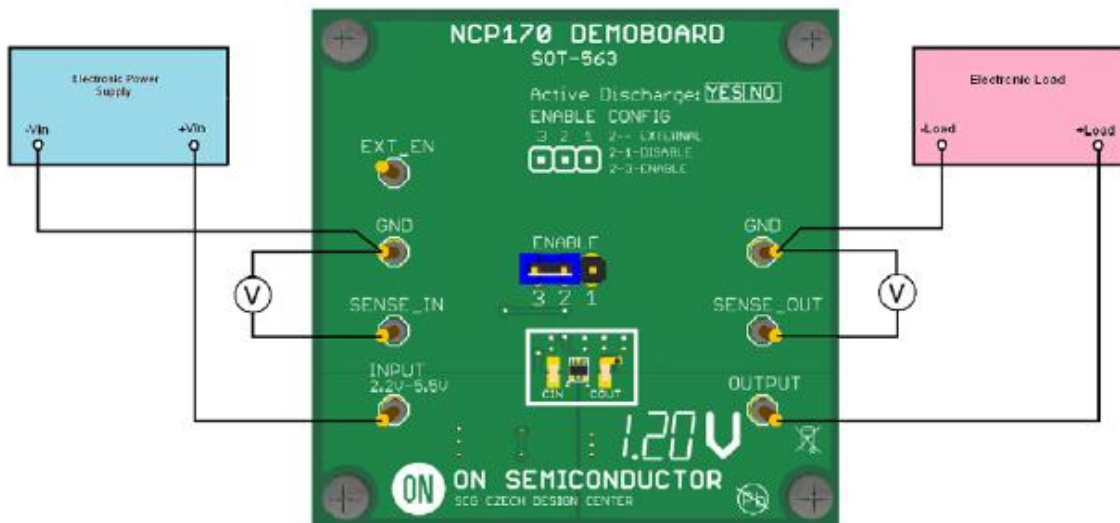




Test Procedure for the NCP170AXV300GEVB Evaluation Board



Test procedure:

1. Check the position of jumper and correct this if necessary in accordance with the picture above.
2. Connect the test setup as shown Figure above
3. Apply an input voltage $V_{in} = 4.0\text{ V}$
4. Apply $I_{out} = 0\text{mA}$ load.
5. Check that V_{out} is $3.0\text{ V} \pm 1\%$.
6. Increase I_{out} up to 0.15 A
7. Check that V_{out} is $3.0\text{ V} \pm 1\%$.
7. Increase V_{in} up to 5.5 V and decrease the load in accordance with SOA
8. Power down the Load
9. Power down the V_{cc}
10. End of test