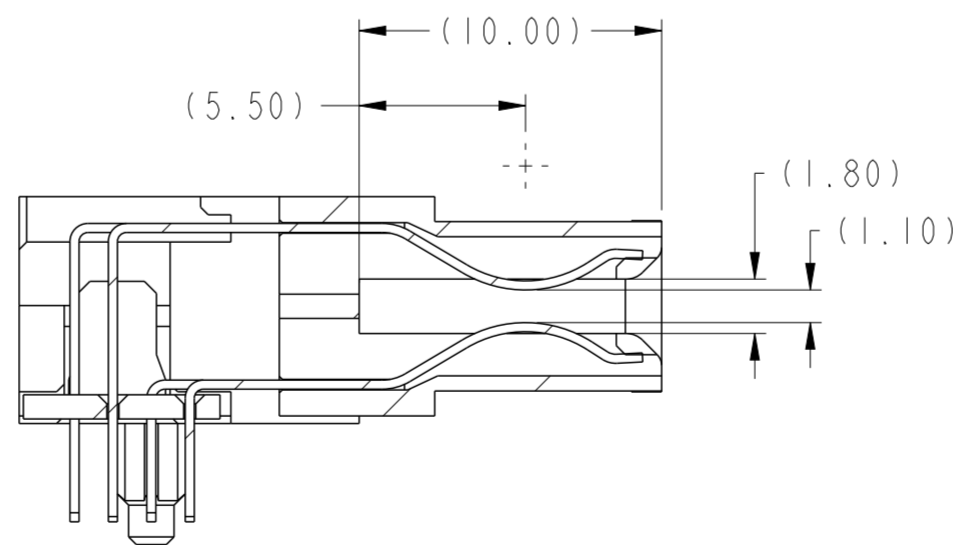
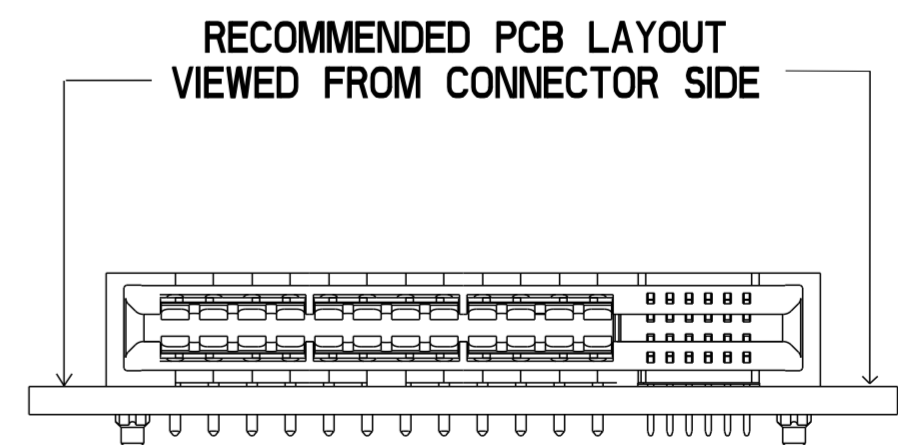
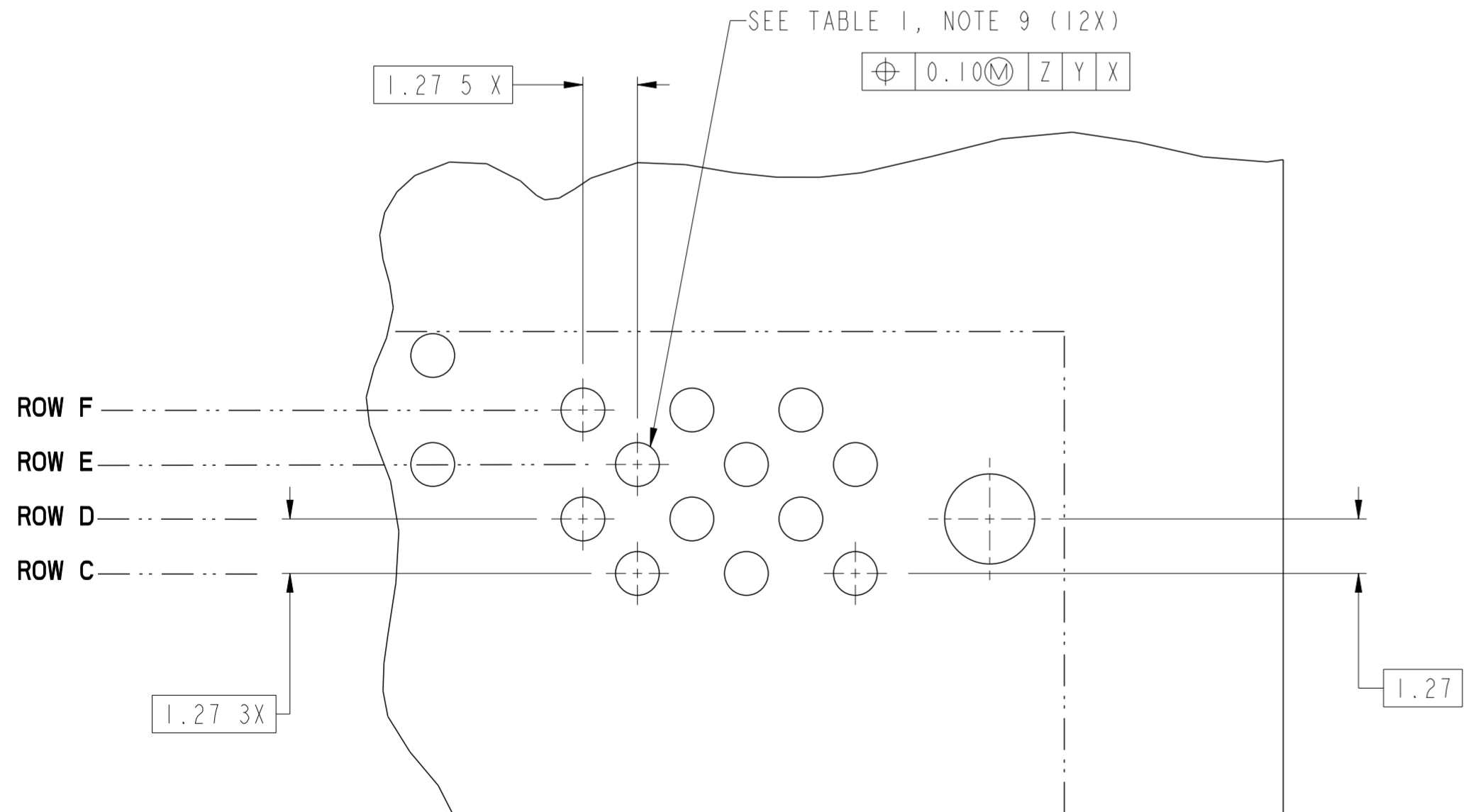
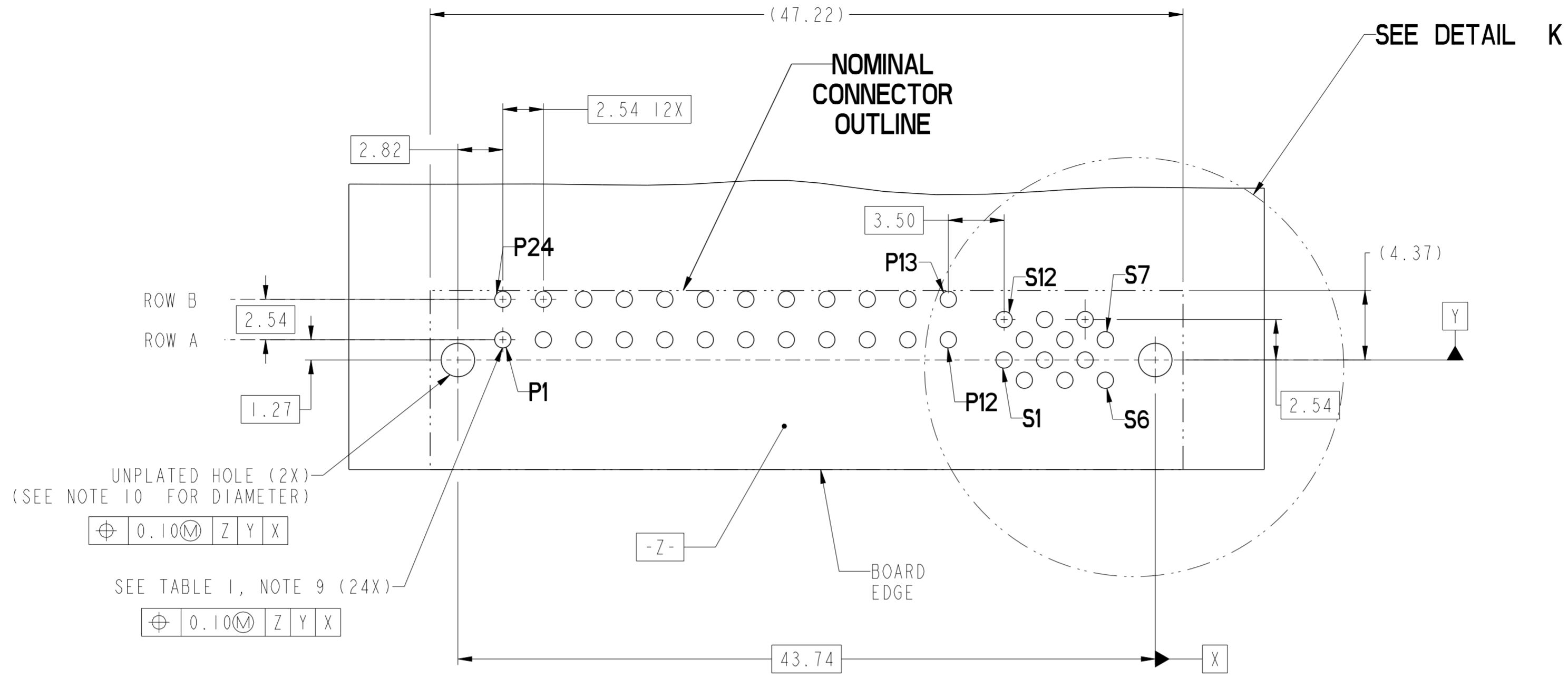


SECTION A-A



SECTION B-B

rev	ecn no	dr	date	spec ref	-	dr	Wei-Long Zhang	2011/12/23	projection	MM	size	A2	scale	4:1										
A	---	HZ	2012-01-13	tolerance std	TOLERANCES UNLESS OTHERWISE SPECIFIED	eng	Wei-Long Zhang	2012/01/13			ecn no	-	rel level	Released										
-	-	-	-	surface	<table border="1"> <tr> <td>linear</td> <td>0.X</td> <td>±0.30</td> </tr> <tr> <td></td> <td>0.XX</td> <td>±0.10</td> </tr> <tr> <td></td> <td>0.XXX</td> <td>±0.05</td> </tr> <tr> <td>angular</td> <td>0°</td> <td>±2°</td> </tr> </table>	linear	0.X	±0.30								0.XX	±0.10		0.XXX	±0.05	angular	0°	±2°	chr
linear	0.X	±0.30																						
	0.XX	±0.10																						
	0.XXX	±0.05																						
angular	0°	±2°																						
-	-	-	-			appr	Pei-Ming Zheng	2012/01/13			dwg no	10119849	rev	A										
<p>Product - Customer Drw</p>											sheet 1 of 4													

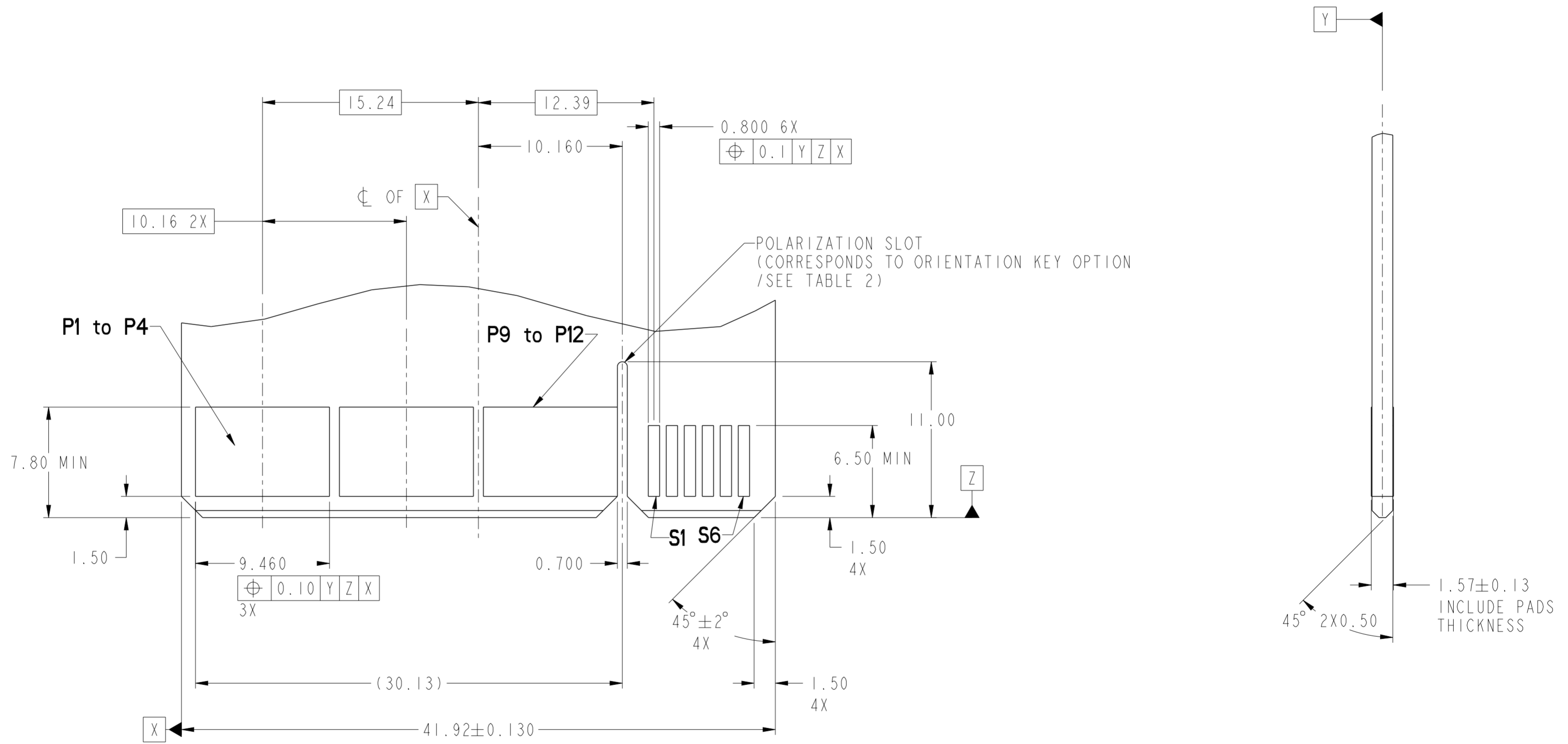


DETAIL K
SCALE 8:1

dr	Wei-Long Zhang	2011/12/23	projection	MM	size	A2	scale	4:1
eng	Wei-Long Zhang	2012/01/13			ecn no	-	rel level	Released
chr	Eleven Hu	2012/01/13						
appr	Pei-Ming Zheng	2012/01/13	product family	-	cat. no.	-	Product - Customer Drw	sheet 2 of 4
			title RIGHT ANGLE 24P12S HIGH POWER CARD EDGE			dwg no 10119849		rev A

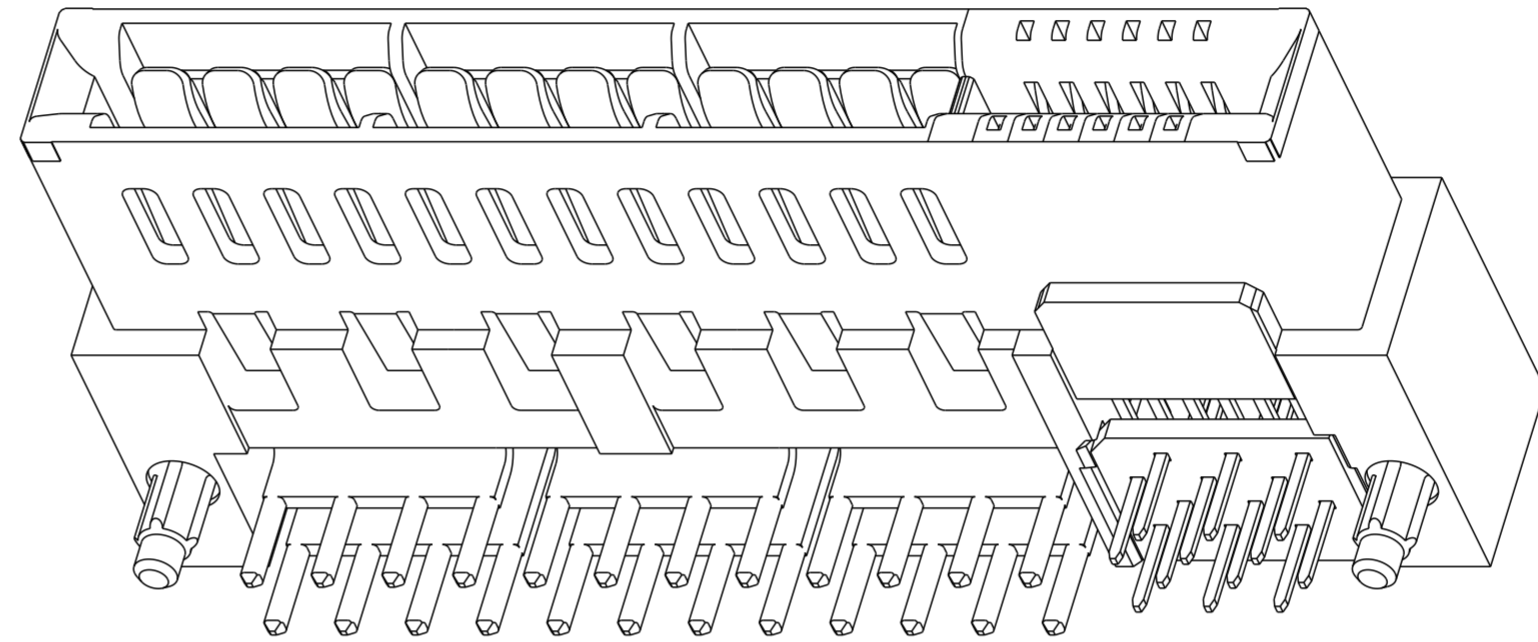
Copyright FCI.

CONTACT TYPE	TOP LAYER DESCRIPTION	TABLE 1 (HPCE / SOLDER TAILS) PLATED THROUGH-HOLE REQUIREMENTS				
		DRILLED HOLE DIAMETER	COPPER THICKNESS	TIN-LEAD THICKNESS	TIN THICKNESS	FINISHED HOLE DIAMETER
POWER & SIGNAL	TIN-LEAD	1.10-1.16 (1.15 DRILL)	0.025 - 0.050	0.005 - 0.015	--	0.94 - 1.10
	IMMERSION TIN	1.10-1.16 (1.15 DRILL)	0.025 - 0.050	--	0.9 - 1.5um	0.94 - 1.10
	COPPER (SEE NOTE 8)	1.10-1.16 (1.15 DRILL)	0.025 - 0.050	--	--	0.94 - 1.10



dr	Wei-Long Zhang	2011/12/23	projection	MM	size	A2	scale	4:1
eng	Wei-Long Zhang	2012/01/13			ecn no	-	rel level	Released
chr	Eleven Hu	2012/01/13						
appr	Pei-Ming Zheng	2012/01/13	product family	-				
			RIGHT ANGLE 24P12S HIGH POWER CARD EDGE			dwg no 10119849		rev A
www.fci.com			cat. no.			Product - Customer Drw		sheet 3 of 4

HPCE PART NUMBER (TABLE 2)				
10117877	TAIL TYPE	HOLD-DOWN OPTION	ORIENTATION KEY	DIM "A" TYPICAL TAIL LENGTH
10119849-001LF	SOLDER TAIL	NO	YES	3.25±0.50
10119849-002LF			NO	
10119849-003LF		YES	YES	
10119849-004LF			NO	



NOTES:

1. CONNECTOR MATERIALS:
 - HOUSING: HIGH TEMPERATURE THERMAL PLASTIC, BLACK
UL 94V-0 COMPLIANT
 - CONTACTS: HIGH PERFORMANCE COPPER ALLOY.
2. CONTACT FINISH REF. GS-12-604 SECTION 5.2.
3. PRODUCT SPECIFICATION: GS-12-604.
4. APPLICATION SPECIFICATION: GS-20-128.
5. PRODUCT MARKING (FCI - PART NUMBER & DATE CODE) ON HOUSING IN AREA SHOWN.
6. PACKAGING MEETS FCI SPECIFICATION GS-14-937.
7. HOUSING COMPONENT WILL WITHSTAND EXPOSURE TO 260°C PEAK TEMPERATURE FOR 60 SECONDS IN A CONVECTION, INFRA-RED, OR VAPOR PHASE REFLOW OVEN.
8. COPPER PLATING THICKNESS IN CENTER OF VIA-HOLE CAN BE NO MORE THAN 0.003 LESS THAN OTHER AREAS.
9. ALL HOLE SIZES ARE FINISHED HOLE SIZES.
10. MOUNTING HOLES ARE UNPLATED
Ø 2.10 +/- 0.1 FOR SOLDER TAILS

dr	Wei-Long Zhang	2011/12/23	projection	MM	size	A2	scale	4:1
eng	Wei-Long Zhang	2012/01/13			ecn no	-	rel level	Released
chr	Eleven Hu	2012/01/13						
appr	Pei-Ming Zheng	2012/01/13	product family	-				
			title RIGHT ANGLE 24P12S HIGH POWER CARD EDGE			dwg no 10119849		rev A
www.fci.com			cat. no.		-		Product - Customer Drw	