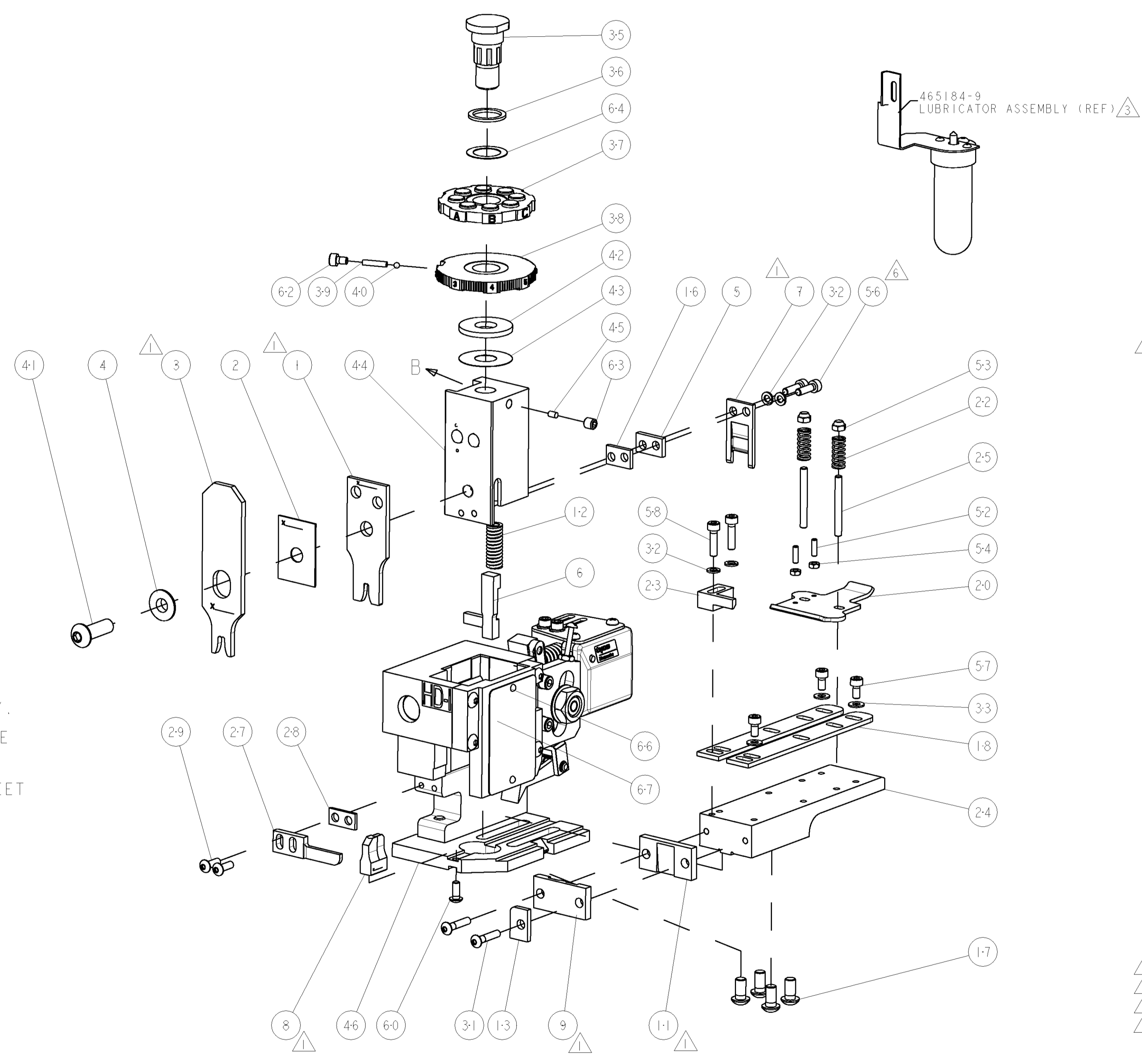


PART NUMBER	REV	TERMINATOR	FEED TYPE	DESCRIPTION
1339816-1	B	BENCH & LEADMAKER	MECH POST FEED	HDI APPLICATOR
7-1339816-1	B	BENCH & LEADMAKER	MECH POST FEED	-1 AND SPARE PARTS
7-1339816-7	A	-	-	SPARE PARTS KIT

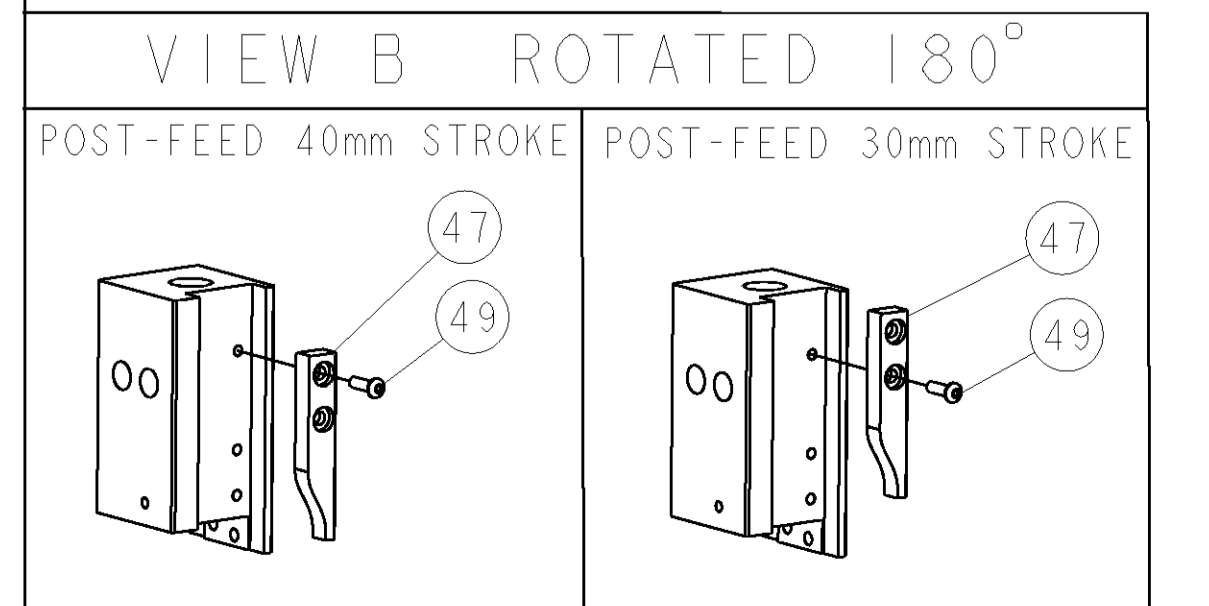
SET UP GAGE		LOC	DIST	REVISIONS			
458638-3		A	66	REV	DATE	BY	APPV
				A	SEE ECO-07-008012	05APR2007	DP MC
				B	ECR-08-018031	18JUL2008	MY GB

CRIMP DATA	TE TERMINAL	TE CRIMP SPECS
TERMINAL NAME: RECEPTACLE		
CRIMP	SIZE	TYPE
WIRE	3.05 [ .120 IN]	F
INSUL	4.57 [ .180 IN]	F
WIRE STRIP LENGTH		APPL INSTRUCTIONS
3.90-4.70 [ .154-.185 IN]		408-8323
TERMINAL APPL SPEC	114-3118	FEED 19.56 [ .770 IN]

TERMINALS APPLIED	WIRE SIZE	CRIMP HEIGHT	PIN PN & LENGTH [IN]
140712	2.00mm <sup>2</sup>	1.78 ± 0.05 [ .070 ± .002 IN]	8-354778-7 [ .2930 ]
140621	1.50mm <sup>2</sup>	1.65 ± 0.05 [ .065 ± .002 IN]	9-354778-9 [ .2990 ]
140622	1.00mm <sup>2</sup>	1.52 ± 0.05 [ .060 ± .002 IN]	1-354779-2 [ .3050 ]
-	0.80mm <sup>2</sup>	1.47 ± 0.05 [ .058 ± .002 IN]	1-354779-6 [ .3070 ]



- 1 RECOMMENDED SPARE PARTS
- 2 GREASE RAM, CAM, CAM FOLLOWER AND FEED ROD LIGHTLY.
- 3 CERTAIN TERMINALS REQUIRE LUBRICATION. REFER TO THE APPLICATOR INSTRUCTION SHEET FOR MORE INFORMATION.
- 4 LUBRICATE DAILY PER THE APPLICATOR INSTRUCTION SHEET SUPPLIED WITH THE APPLICATOR.
- 5 WIRE RANGE SHOWN IS THAT OF THE APPLICATOR. TERMINAL WIRE RANGE IS 18 - 14 AWG.
- 6 CUT TO LENGTH AT ASSEMBLY.



QTY	REV	LOC	DIST	DESCRIPTION	DATE	BY	APPV
-	1	1	1	1338705-2	DOCUMENTATION PACKAGE		71
-	1	1	1	461264-1	PLATE, IDENTIFICATION		67
-	2	2	2	21017-2	SCREW, DRIVE		66
-	1	1	1	986950-1	WASHER, FLAT PRECISION		64
-	1	1	1	3-18031-0	SCR, SET, CUP POINT M6 X 6.0		63
-	1	1	1	18023-9	SCR, SKT HD CAP M4 X 6.0		62
-	1	1	1	18024-7	SCR, BTN SKT HD CAP (M4 X 10.0)		60
-	2	2	2	1-18023-3	SCR, SKT HD CAP M4 X 16.0		58
-	3	3	3	1-18023-0	SCR, SKT HD CAP M4 X 8.0		57
-	2	2	2	9-18023-6	SCR, SKT HD CAP M4 X 14.0		56
-	2	2	2	18029-1	NUT, HEX, REG M3		54
-	2	2	2	986965-1	NUT, LOCK, HEX, TORQUE (M4)		53
-	2	2	2	2-18032-2	SCR, SET, FLT POINT M3 X 10.0		52
-	1	1	1	18024-3	SCR, BTN SKT HD CAP (M3 X 10.0)		49
-	1	1	1	1338676-1	CAM, UNIVERSAL POST-FEED		47
-	1	1	1	1338662-1	SUB ASSY, APPLICATOR FRAME		46
-	1	1	1	690191-1	PLUG, NYLON		45
-	1	1	1	1320998-1	RAM		44
-	1	1	1	690125-1	SHIM SUB-ASSY		43
-	1	1	1	690124-1	WASHER, RAM (.115)		42
-	1	1	1	2-18024-6	SCR, BTN SKT HD CAP (M8 X 25.0)		41
-	1	1	1	23241-1	BALL, STEEL		40
-	1	1	1	2-22278-7	SPRING, COMPRESSION		39
-	1	1	1	1320922-1	DISC, ADJUST, INSULATION CRIMP		38
-	1	1	1	354777-1	WIRE DISC, ASSEMBLY		37
-	1	1	1	22480-5	SPRING, COMPRESSION		36
-	1	1	1	690212-1	POST, RAM		35
-	3	3	3	18027-2	WASHER, FLAT, REG M4		33
-	4	4	4	18025-2	WASHER, SPRG LOCK, REG M4		32
-	2	2	2	1-18024-0	SCR, BTN SKT HD CAP (M4 X 20.0)		31
-	2	2	2	18024-8	SCR, BTN SKT HD CAP (M4 X 12.0)		29
-	1	1	1	3-690451-2	SPACER, STRIPPER		28
-	1	1	1	240639-1	STRIPPER (MACHINING)		27
-	2	2	2	1320906-1	STUD, THREADED		25
-	1	1	1	1320995-1	PLATE, STRIP GUIDE		24
-	1	1	1	240825-3	PLATE, STRIP HOLD DOWN		23
-	2	2	2	4-22281-1	SPRING, DRAG		22
-	1	1	1	1338665-1	DRAG		20
-	2	2	2	1338663-5	GUIDE, LOWER STRIP		18
-	4	4	4	1-18024-8	SCR, BTN SKT HD CAP (M6 X 12.0)		17
-	1	1	1	1338708-1	SPACER, SLUG BLADE		16
-	1	1	1	690481-7	SPACER, HOLD DOWN		13
-	1	1	1	23846-1	SPRING, DIE		12
-	1	1	1	240644-1	PLATE, REAR SHEAR		11
-	1	1	1	690482-5	PLATE, FRONT SHEAR		9
-	1	2	1	1-1633384-6	ANVIL, COMBINATION		8
-	1	1	1	690474-5	BLADE, SLUG		7
-	1	1	1	455892-8	HOLD DOWN, TERMINAL		6
-	1	1	1	240641-5	SPACER		5
-	1	1	1	2-238009-5	BLOCK, FL CRIMPER SPACER		4
-	1	2	1	4-1633471-5	CRIMPER, INSULATION F		3
-	1	1	1	455888-6	SPACER, CRIMPER		2
-	1	2	1	456409-5	CRIMPER, WIRE .120 "F" PREMIUM		1

DIMENSIONS: INCHES TOLERANCES UNLESS OTHERWISE SPECIFIED: 0 PLC ± .01 1 PLC ± .01 2 PLC ± .01 3 PLC ± .001 4 PLC ± .001 ANGLES ± .001		DWN L. LOETHOUSE CHK M. CLIFFORD APVD M. CLIFFORD PRODUCT SPEC APPLICATION SPEC		DATE 01MAR2007 NAME M. CLIFFORD TITLE SIZE CAGE CODE DRAWING NO RESTRICTED TO	
MATERIAL: FINISH:		WEIGHT: CUSTOMER DRAWING		SCALE 3:5 SHEET 1 OF 1 REV B	