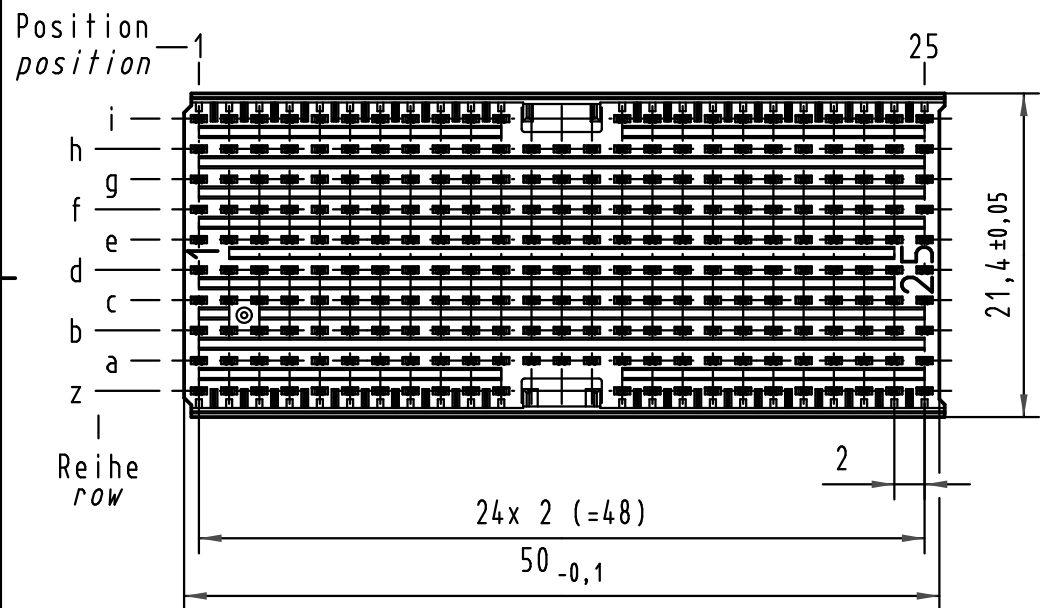
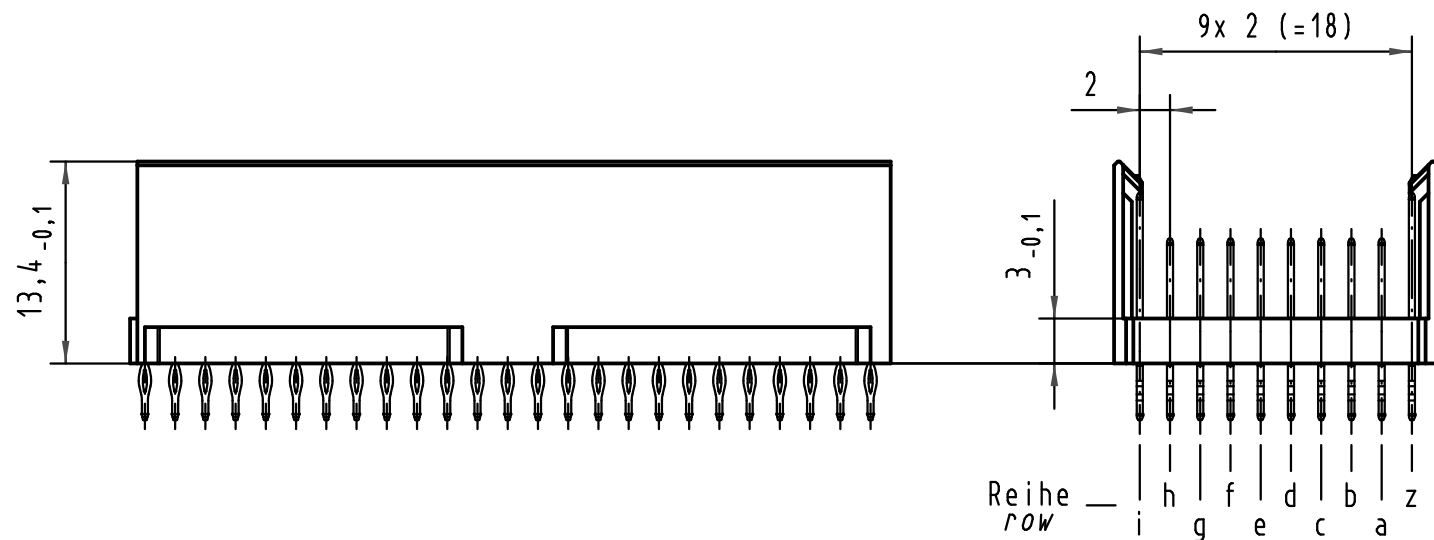
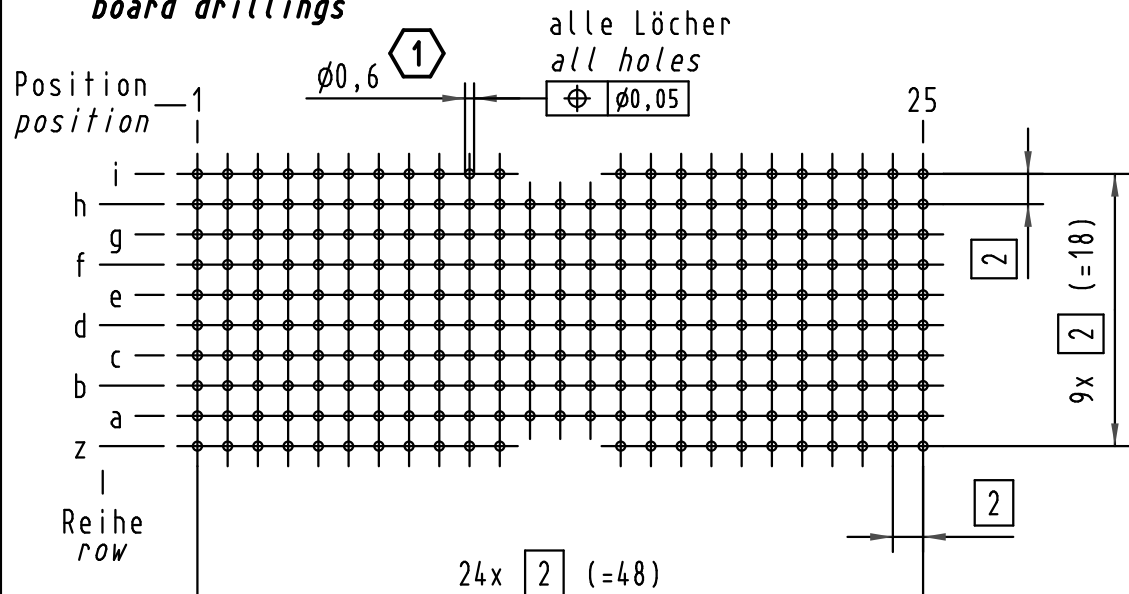


Alle Rechte vorbehalten/ All rights reserved

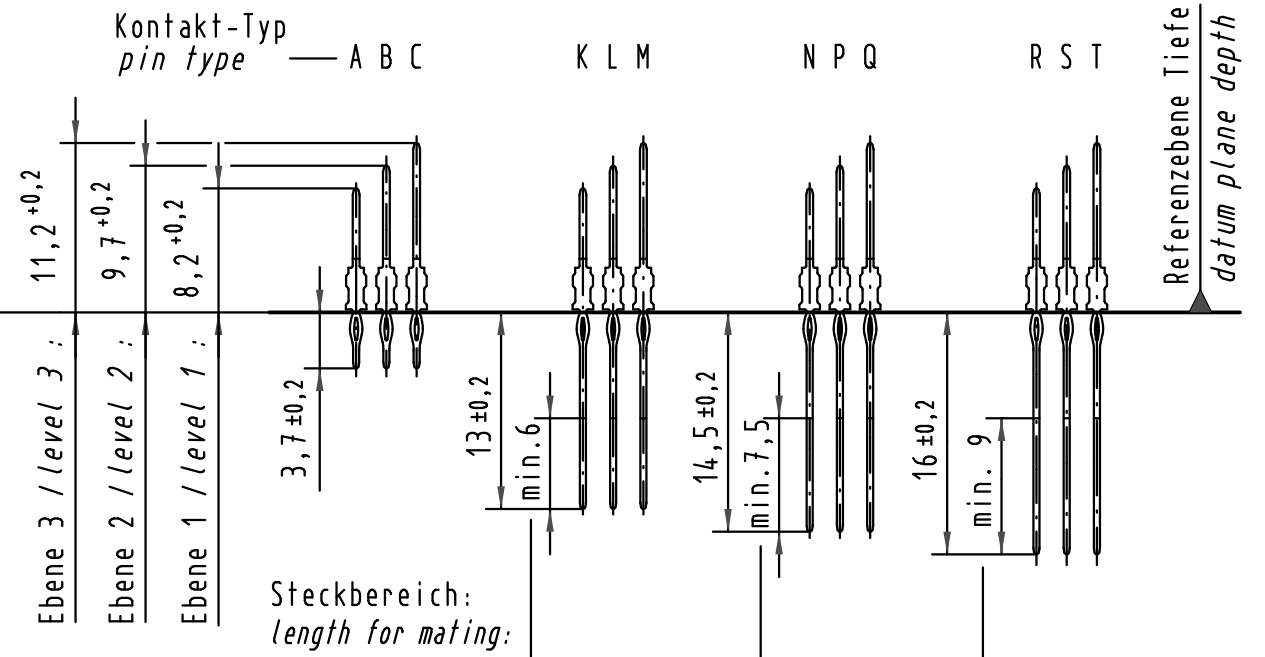


**Lochbild
board drillings**

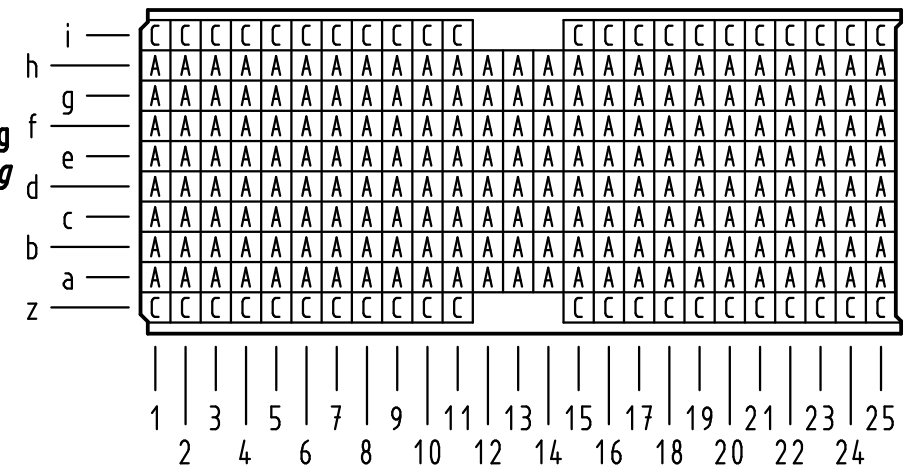


**Kontakt-Maße
contact dimensions**

(Längen der Steck- und Anschlußseite gelten für eingepreßte Steckverbinder)
(mating and termination length of contacts apply to pressed in connectors)



**Kontaktbelegung
contact loading**



Empfohlener Lochaufbau und weitere Informationen siehe: DS 17 00 110 0101
recommended configuration of plated through holes and further information see: DS 17 00 110 0101

17 10 244 4201	S4
17 10 244 2201	2
17 10 244 1201	1
Bestell-Nr. part-no.	Anforderungsstufe performance level 1

All Dimensions in mm Original Size DIN A 3			Techn. Character.			Nicht tolerierte Maßel/Free size tolerances IEC 61076-4-101		
Mod.	Dat.	Name	Dat.	Name	Maßstab/Scale	har-bus HM Messerleiste Typ DE 244 pol., Anschlußlänge 3,7mm har-bus HM male connector type DE 244 pol., term. length 3,7mm TB 17 10 244 x201 Blatt/page		
35970	13.01.10	Hage.	Detail.	04.10.00	Lk			2:1
35560	21.08.09	Hage.	Insp.	04.10.00	Ko			
34337	24.05.07	Hage.	Stand.					
28688								
HARTING Electronics GmbH & Co. KG D-32339 ESPELKAMP			Sub.					