

4

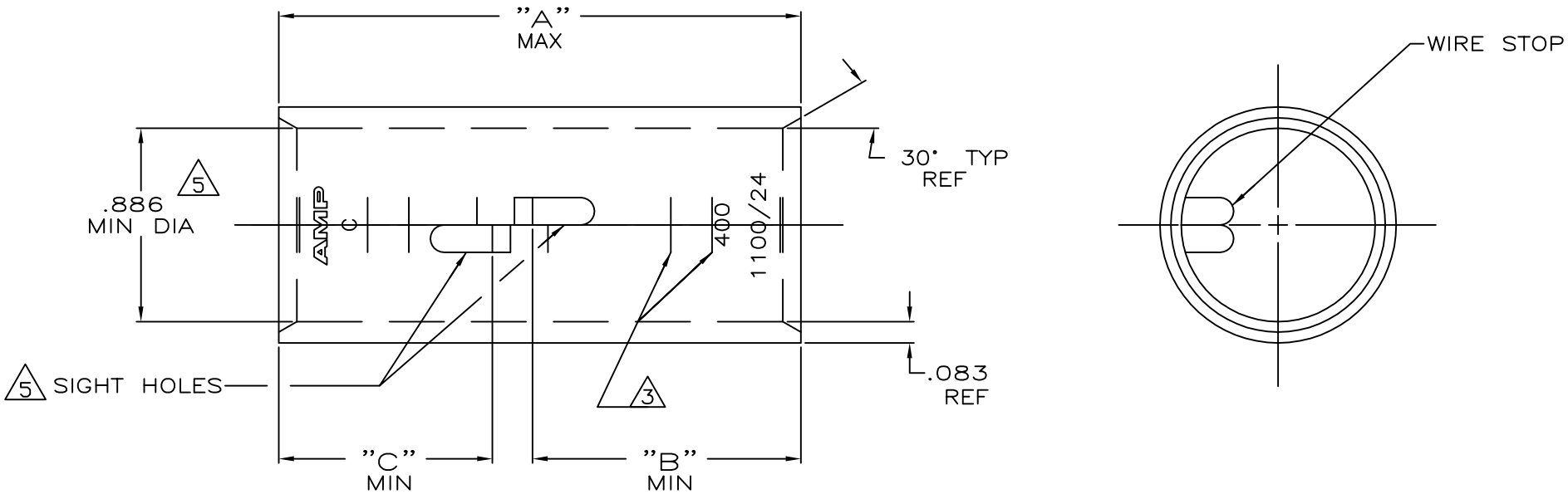
3

2

1

THIS DRAWING IS UNPUBLISHED. RELEASED FOR PUBLICATION
 © COPYRIGHT - By - ALL RIGHTS RESERVED.

| LOC | DIST | REVISIONS | | | |
|-----|------|-------------|---------------|-----------|-------|
| P | LTR | DESCRIPTION | DATE | DWN | APVD |
| G | 86 | U | ECR-13-000998 | 11FEB2013 | PK HS |



- ① TIN PL .000150 MIN THK PER ASTM B-545
- ② PART NO: 324465; .180 LB.
PART NO: 1-324465-0; .180 LB.
PART NO: 2-324465-5; .200 LB.
- ③ CRIMP LOCATION MARKS ON PART NO. 2-324465-5 ONLY.
- ④ CLEANED, UNPLATED
- ⑤ .045 MAX BURR ALLOWED INSIDE THE WIRE BARREL ID IN AREA OF SIGHT HOLE.

| | | | | | | |
|-----|------|------|--------|----------------|---------------------------------|------------|
| .97 | 1.22 | 2.45 | ④ ③ | 375-450 MCM | COPPER ASTM-B-75 ANNEALED | 2-324465-5 |
| .97 | .97 | 2.20 | ④ | | | 1-324465-0 |
| "C" | "B" | "A" | FINISH | WIRE RANGE | MATERIAL | PART No |

THIS DRAWING IS A CONTROLLED DOCUMENT.

| | | | |
|-----------------------|-----------------------------------------------------------------------------------------------------------------------|---------------------------------------------------------------------------|----------------------------------------------------------------|
| DIMENSIONS: INCHES | TOLERANCES UNLESS OTHERWISE SPECIFIED: 0 PLC ± - 1 PLC ± - 2 PLC ± - 3 PLC ± - 4 PLC ± - ANGLES ± - | DWN DK SCHRUM 4/24/89 CHK MS FEHER 4/24/89 APVD WJ VOCKROTH 11/8/89 | NAME |
| MATERIAL SEE TABLE | FINISH SEE TABLE | PRODUCT SPEC APPLICATION SPEC WEIGHT | SIZE CAGE CODE DRAWING NO RESTRICTED TO A3 00779 C=324465 - |
| CUSTOMER DRAWING | | SCALE 2:1 | SHEET 1 OF 1 REV U |

TE Connectivity
SPLICE, BUTT, AMPPOWER
WIRE SIZE:400 MCM