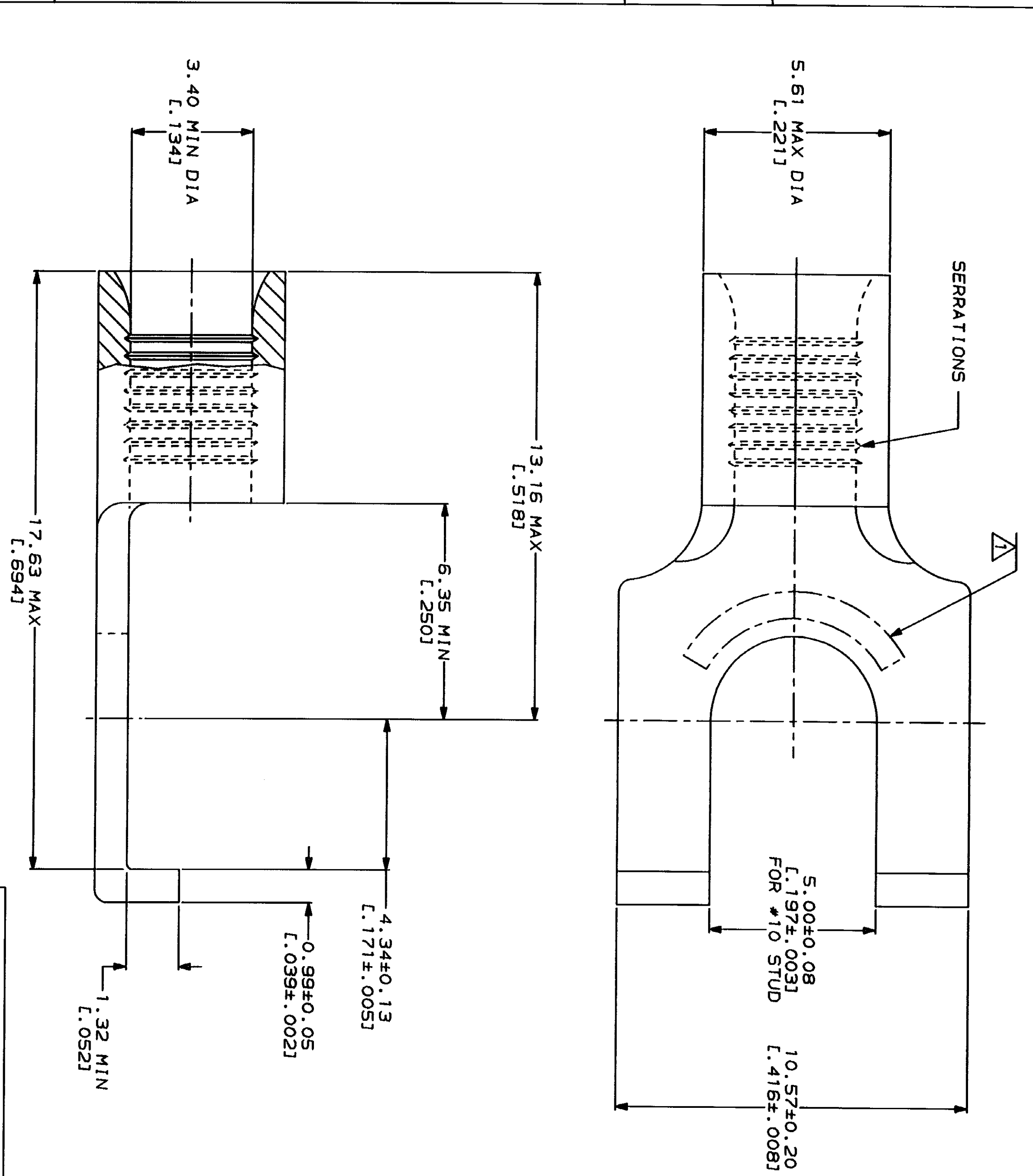


| LOC | DIST | ZONE | LTR | REVISIONS | DESCRIPTION | DATE | APPD |
|-----|------|------|-----|-----------|--------------------------|---------|------|
| G | 14 | | | E | REVISED PER 0720-0230-93 | 2/28/94 | DAF |

METRIC
 DIMENSIONS LISTED IN mm [INCHES]

| | |
|---|---|
| AMP WIRE RANGE 12-10 AWG STRANDED | UL E13288 Listed |
| AMP WIRE RANGE 12-10 AWG STRANDED | MILITARY P/N AND CLASS NOT APPLICABLE |

△ STAMP AMP 12-10* APPROX AS SHOWN



AMP INCORPORATED
 CUSTOMER SERVICE SYSTEMS

FOR ADDITIONAL
 PRODUCT INFORMATION OR
 COPIES OF DRAWINGS
 AND TECHNICAL DOCUMENTS

FOR APPLICATION
 TOOLING INFORMATION

FOR ORDER ENTRY

PRODUCT INFORMATION CENTER
 1-800-522-6752

TOOLING ASSISTANCE CENTER
 1-800-722-1111

1-800-526-5142

MAX RECOMMENDED OPERATING
 TEMPERATURE:
 170°C MAX

VOLTAGE RATING:
 NOT APPLICABLE

WIRE CROSS SECTIONAL AREA RANGE:
 2.62-6.64mm² (S.180-13,100) CIR MILS
 STRANDED

DO NOT SCALE PRINT.
 UNLESS SPECIFIED
 DIMENSIONS IN MILLIMETERS
 TOLERANCES ON:
 2 PLC DEC # -
 3 PLC DEC # -
 ANGLES # -

MATERIAL
 COPPER PER
 ASTM B-152
 ANNEALED

FINISH
 TIN PLATE
 0.0025±L.0001(00) MIN
 THK PER MIL-T-10727

| | | |
|----------------------------|--------------------------|---|
| DR 3-4-93 TA BRINKMAN | NAME | AMP AMP Incorporated Harrisburg, PA 17105-3508 |
| CHK 3-4-93 DA PATTERSON | APPD 3-4-93 DE HILLER | TERMINAL, FLANGED SPADE, BUDGET |
| APPD 3-4-93 JL MECKLEY | PRODUCT SPEC | 322725 PART NO |
| APPLICATION SPEC | SCALE 10:1 | 322725 DRAWING NO |
| WEIGHT | | 00779 CAGE CODE |
| | | G-322725 DRAWING NO |
| | | 1 OF 1 SHEET |