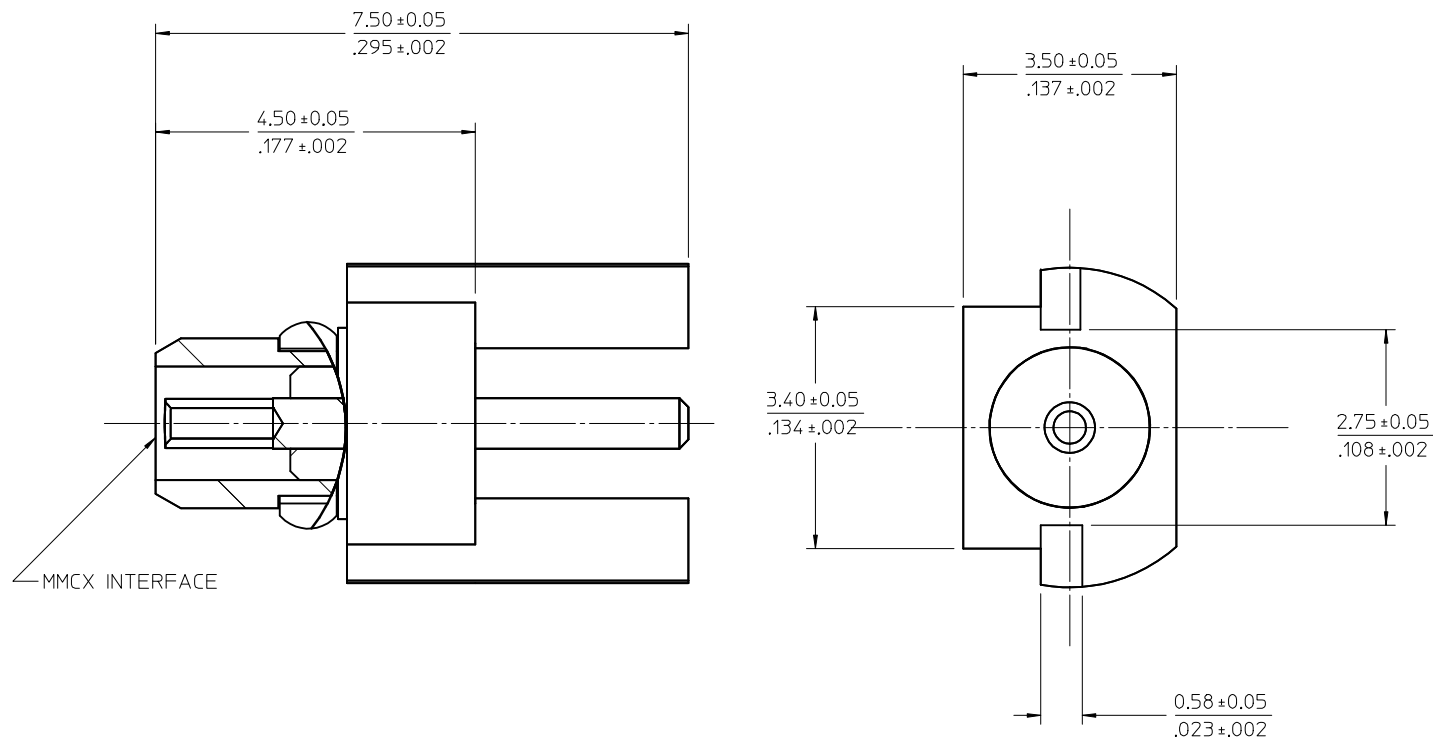


MATERIALS AND FINISHES

BODY, BRASS
PLATED GOLD

CENTER CONTACT, BERYLLIUM COPPER
PLATED GOLD

INSULATOR, TEFLON



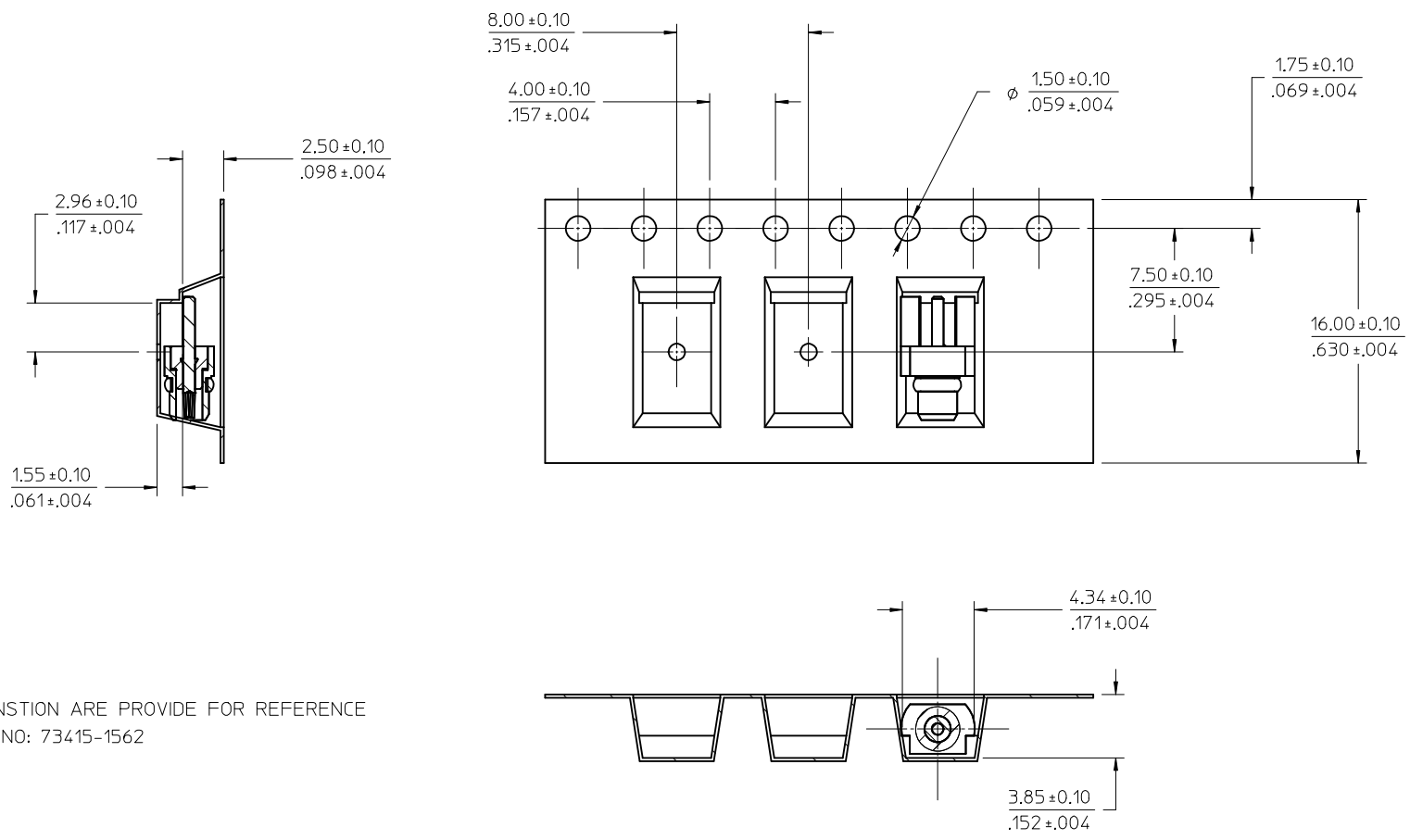
MMCX INTERFACE

73415-1563 COMMERCIAL REQUIREMENTS PACKAGING WITH BAGS AND PROVIDE CUSTOMER P/N ON CARTON AND INNER PACKAGING
73415-1562 COMMERCIAL REQUIREMENTS PACKAGING WITH TAPE&REEL
73415-1561 COMMERCIAL REQUIREMENTS PACKAGING WITH BAGS
73415-1560 MILITARY REQUIREMENTS PACKAGEING WITH BAGS

PRODUCT SPECIFICATION PS-89675-1910
ELECTRO/MECH PERFORMANCE

ADD PART NO734151563
AND LOAD IN WJ
EC NO: DRP-2006-0406
DRWN: JTSAO 2006/03/24
CHKD: XEN 2006/03/27
APPR: MHUANG 2006/03/28

QUALITY SYMBOLS ▽=0 ▽=0	GENERAL TOLERANCES (UNLESS SPECIFIED)		DIMENSION STYLE MM/IN		SCALE	DESIGN UNITS METRIC	THIRD ANGLE PROJECTION
		mm	INCH	DRAWN BY LYNN	DATE 2000/03/01	TITLE MMCX PLUG REVERSE PLUG PCB TYPE MMCX-P/PCB	
	4 PLACES	± .005	± .0005	CHECKED BY JOHNSON	DATE 2000/03/01	MOLEX INCORPORATED	SHEET NO. 1 OF 2
	3 PLACES	± .005	± .0005	APPROVED BY MISEN	DATE 2000/03/01		
	2 PLACES	± 0.05	± .005	MATERIAL NO. SEE TABLE		DOCUMENT NO. SD-73415-156	
	1 PLACE	± 0.1	± .01	SIZE A2		THIS DRAWING CONTAINS INFORMATION THAT IS PROPRIETARY TO MOLEX INCORPORATED AND SHOULD NOT BE USED WITHOUT WRITTEN PERMISSION	
	ANGULAR ± 2 °		DRAFT WHERE APPLICABLE MUST REMAIN WITHIN DIMENSIONS				



1.DIMENSTION ARE PROVIDE FOR REFERENCE
PART NO: 73415-1562

SEE SHEET 1 EC NO: URF2006-0406 2006/03/24 DRWN: JTSAO 2006/03/27 CHKD: XEN 2006/03/28 APPR: MHUANG	QUALITY SYMBOLS ▼=0 ▽=0	GENERAL TOLERANCES (UNLESS SPECIFIED)		DIMENSION STYLE MM/IN		SCALE 1:1	DESIGN UNITS METRIC	THIRD ANGLE PROJECTION	
		4 PLACES ± --- ± ---	mm INCH	DRAWN BY LYNN	DATE 2000/03/01	TITLE MMCX PLUG REVERSE PLUG PCB TYPE MMCX-P/PCB			
		3 PLACES ± --- ± ---	± 0.05 ± ---	CHECKED BY JOHNSON	DATE 2000/03/01	MOLEX INCORPORATED			
		2 PLACES ± 0.1 ± ---	ANGULAR ± 2 °	APPROVED BY MISEN	DATE 2000/03/01	MATERIAL NO. SEE SHEET 1	DOCUMENT NO. SD-73415-156	SHEET NO. 2 OF 2	
DRAFT WHERE APPLICABLE MUST REMAIN WITHIN DIMENSIONS		THIS DRAWING CONTAINS INFORMATION THAT IS PROPRIETARY TO MOLEX INCORPORATED AND SHOULD NOT BE USED WITHOUT WRITTEN PERMISSION							