

## General Specifications

### Motor Protection:

Auto Restart/Polarity Protection

### Insulation Resistance:

10M Ω or over with a DC500V Megger

### Dielectric Withstand Voltage: AC 700V 1s

### Allowable Ambient Temperature Range:

-10°C ~ +70°C (Operating)

-40°C ~ +70°C (Storage)

(non-condensing environment)

## Expected Life

### Failure Rate: 10%

60°C 40,000 Hours

## Material

Casing : Plastic (Black) UL94V-0

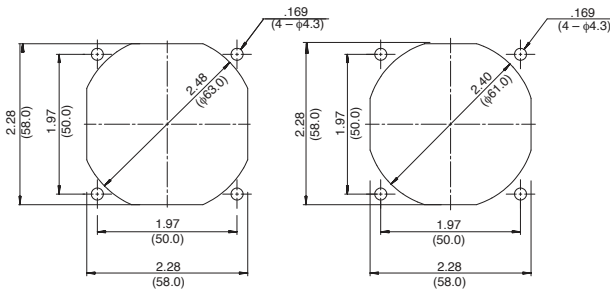
Impeller : Plastic (Black) UL94V-0

Bearing : Ball Bearing

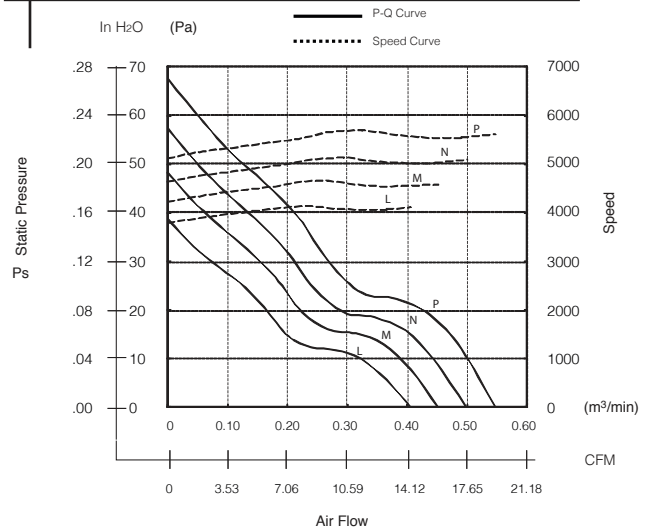
Lead Wire : UL3385, AWG26, +Red, -Black

## Panel Cut-Outs

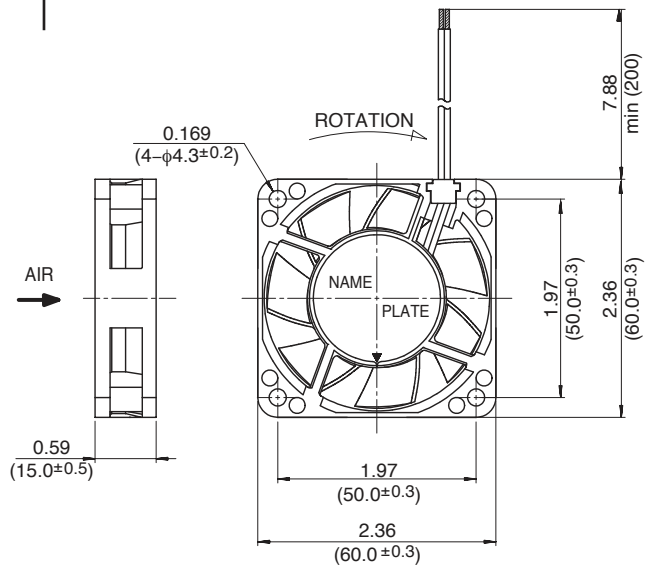
Units:  $\frac{\text{inch}}{\text{(mm)}}$



## Characteristic Curves



## Outline



## Specifications

MODEL	Rated Voltage	Operating Voltage	Current	Input Power	Speed	Max. Air Flow		Max. Static Pressure		Noise	Mass
	(V)	(V)	(A) <sup>*1</sup>	(W) <sup>*1</sup>	(min <sup>-1</sup> ) <sup>*1</sup>	CFM <sup>*1</sup>	(m <sup>3</sup> /min) <sup>*1</sup>	in H <sub>2</sub> O	(Pa) <sup>*1</sup>	(dB) <sup>*1</sup>	(g)
06015VA-12L-AA-00	12	6.0 ~ 13.8	0.08	0.96	4100	14.5	0.41	0.16	38.8	28.5	55
06015VA-12M-AA-00	12	6.0 ~ 13.8	0.11	1.32	4600	15.9	0.45	0.19	48.3	31.0	55
06015VA-12N-AA-00	12	6.0 ~ 13.8	0.12	1.44	5100	17.6	0.50	0.23	57.5	33.5	55
06015VA-12P-AA-00	12	6.0 ~ 13.8	0.13	1.56	5600	19.4	0.55	0.27	67.7	36.5	55
06015VA-24L-AA-00	24	10.0 ~ 27.6	0.04	0.96	4100	14.5	0.41	0.16	38.8	28.5	55
06015VA-24M-AA-00	24	10.0 ~ 27.6	0.05	1.20	4600	15.9	0.45	0.19	48.3	31.0	55
06015VA-24N-AA-00	24	10.0 ~ 27.6	0.06	1.44	5100	17.6	0.50	0.23	57.5	33.5	55
06015VA-24P-AA-00	24	10.0 ~ 27.6	0.07	1.68	5600	19.4	0.55	0.27	67.7	36.5	55
06015VA-24Q-AA-00	24	10.0 ~ 26.4	0.08	1.92	6100	21.2	0.60	0.30	75.4	40.0	55

Rotation: Clockwise

Airflow Outlet: Air Out Over Struts

\*1: Average Values in Free Air

Note: Locked Rotor/Tach Available