

6

5

4

3

2

1

E

E

D

D

C

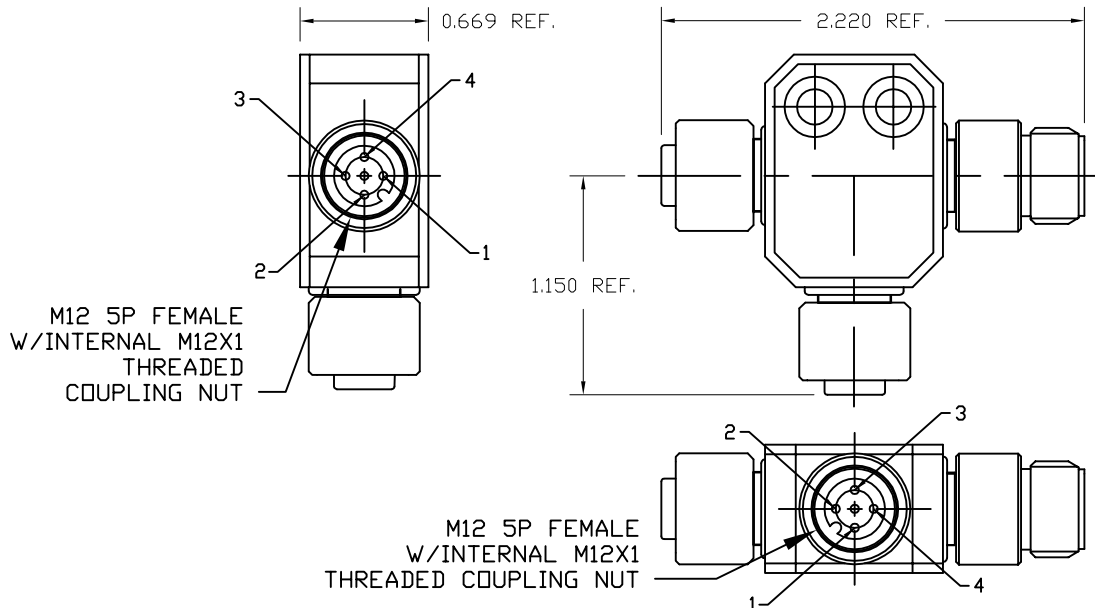
C

B

B

A

A



M12 5P FEMALE
W/INTERNAL M12X1
THREADED
COUPLING NUT

M12 5P MALE W/EXTERNAL M12X1
THREADED COUPLING NUT

M12 5P FEMALE
W/INTERNAL M12X1
THREADED COUPLING NUT

NOTES:

MATERIALS:

MOLDED BODY: GRAY PUR
 COUPLERS: STAINLESS STEEL OR NI PLATED BRASS
 CONTACTS: GOLD/NICKEL OVER COPPER ALLOY
 MC INSERTS: BLACK PUR
 O-RING(MIC FEM.): RED NITRILE RUBBER

ELECTRICAL:

CURRENT RATING: 4AMP MAX
 VOLTAGE RATING: 250V

MECHANICAL:

TEMPERATURE RANGE: 0° TO 60°C
 INGRESS PROTECTION: IP 67

AGENCY CERTIFICATIONS:

AGENCY: CSA PENDING

PART NUMBER REFERENCE:

MATERIAL NUMBER	ENGINEERING NUMBER	COUPLER STYLE
1300350097	MICT5558	HEX - 316 STAINLESS STEEL
1300350090	MICT555	KNURLED - NI PLATED BRASS

ADD MAT# TO TABLE EC NO: WNA2009-0313 DRWN: LHARTMAN 2008/10/27 CHKD: YOU 2008/11/07 APPR: JFMURPHY 2008/11/10	QUALITY SYMBOLS ▽=0 ▽C=0	GENERAL TOLERANCES (UNLESS SPECIFIED)		DIMENSION STYLE	SCALE	DESIGN UNITS	THIRD ANGLE PROJECTION		
			mm	INCH	----	1:1	INCH		
		4 PLACES	±---	±---	DRAWN BY	DATE	TITLE MICRO-CHANGE TEE 5 POLE MA/FE W/FE DROP ----		
		3 PLACES	±---	±---	LHARTMAN	2008/10/27			
2 PLACES	±---	±---	CHECKED BY	DATE	MATERIAL NO. SD-130035-001				
1 PLACE	±---	±---	YOU	2008/10/27					
ANGULAR ±--°		APPROVED BY		DATE	MOLEX INCORPORATED				
DRAFT WHERE APPLICABLE MUST REMAIN WITHIN DIMENSIONS		JFMURPHY		2008/10/27				DOCUMENT NO. SD-130035-001	
		MATERIAL NO.		SEE TABLE	SHEET NO. 1 OF 1				
		SIZE		A				THIS DRAWING CONTAINS INFORMATION THAT IS PROPRIETARY TO MOLEX INCORPORATED AND SHOULD NOT BE USED WITHOUT WRITTEN PERMISSION	

6

5

4

3

2

1