

VIEW ON MATING SIDE

| | | | | | | | | | | | | | | | | | | | | | | | | | | | | | | | | | | | | |
|---|---|---|---|---|---|---|---|---|---|---|---|---|---|---|---|---|---|---|---|---|---|---|---|---|---|---|---|---|---|---|---|---|---|---|---|---|
| c | A | A | A | A | A | A | A | A | A | A | A | A | A | A | A | A | A | A | A | A | A | A | A | A | A | A | A | A | A | A | A | A | A | A | A | |
| d | A | A | A | A | A | A | A | A | A | A | A | A | A | A | A | A | A | A | A | A | A | A | A | A | A | A | A | A | A | A | A | A | A | A | A | A |
| c | A | A | A | A | A | A | A | A | A | A | A | A | A | A | A | A | A | A | A | A | A | A | A | A | A | A | A | A | A | A | A | A | A | A | A | A |

A = 96 STANDARD CONTACTS L = 2.9

| | |
|-------------------|--|
| MARKING | STANDARD |
| PERFORMANCE LEVEL | G1/O = CONTACT AREA PERFORM. LEVEL 1 / TERMINATION TIN |
| FLUX PROOF | NO |
| FIXING CLIP | NO |
| DIMENSIONS | SD-85013-0001 SHT 1 |

| | | | | |
|----------------|-------------------|-------------------------|-------|-------|
| A | G1/O | a1-32 | b1-32 | c1-32 |
| CONTACT SYMBOL | PERFORMANCE LEVEL | CONTACT POSITION NUMBER | | |

I:2004-XXXX
N.S. 31/03/04
G.L. 31/03/04
G.L. 31/03/04

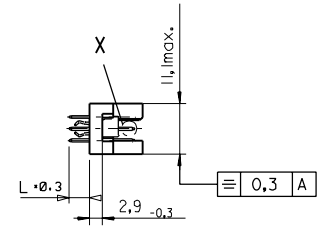
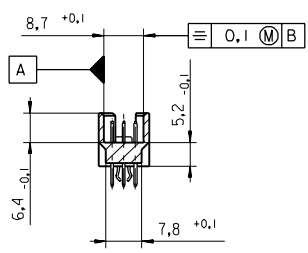
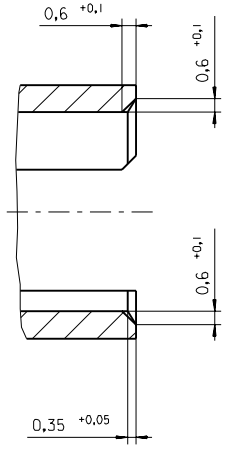
B

| | | | | |
|----------------|------------|--|------------|---|
| | | | X | Y |
| | | | X | N |
| N.S. | 13/03/02 | 96 POS MALE CONNECTOR ACCORDING DIN 41612 STYLE R CONTACTS ARRANGEMENT | | |
| G.L. | 13/03/02 | | | |
| G.L. | 13/03/02 | | | |
| S850132385.S01 | 85013-2385 | SD-85013-2385 | NO. 1 OF 1 | A |

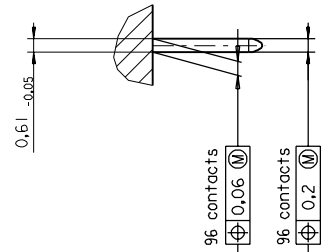
NO. 1 OF 1
ZE D

PART NO.
DWG. NO.

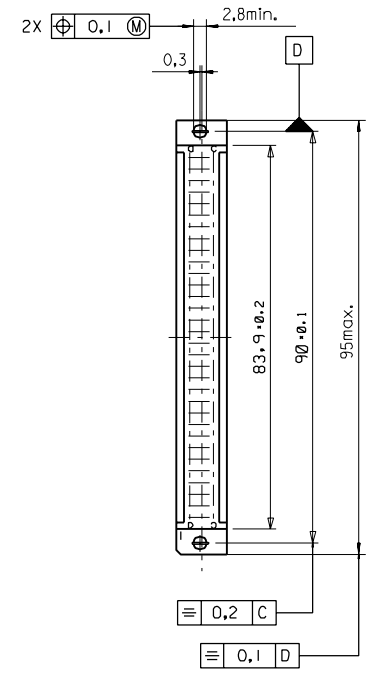
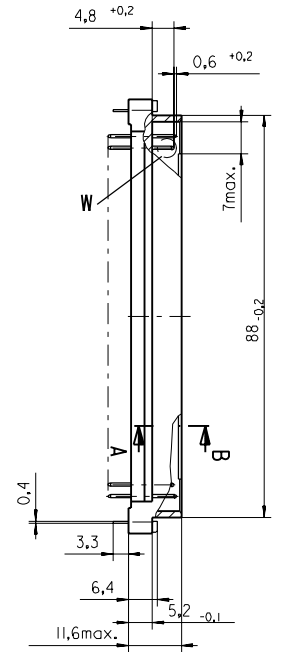
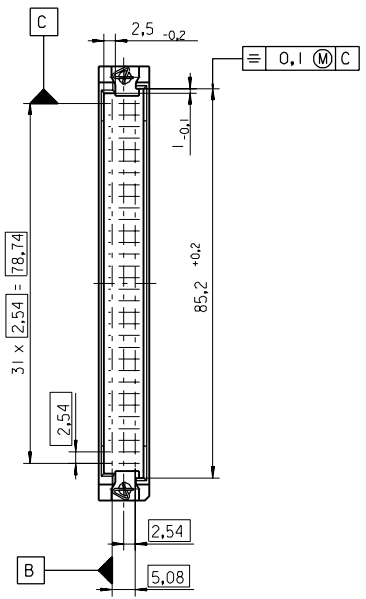
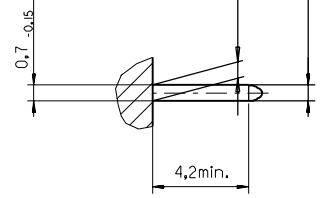
Section A - B
5:1



View X
5:1



View W
5:1



| FIRST ANGLE PROJECTION | | REVISE ONLY ON CAD SYSTEM | | SH. | REV. |
|--|--------|---------------------------|------|---|---|
| UNLESS OTHERWISE SPECIFIED TOLERANCES: ANGULAR ±2° | INCH | DRWG BY | SIGN | CAD/CAM PROJECT NAME | |
| | METRIC | Ca | | 85013000 | THIS DRAWING CONTAINS INFORMATION THAT IS PROPRIETARY TO MOLEX INC. & SHOULD NOT BE USED WITHOUT WRITTEN PERMISSION |
| 3 PLACE ± . ± | | CHK'D BY | SIGN | TITLE | |
| 2 PLACE ± . ± | | KN | | 96 pos. Male connector acc. DIN 41612 Style R | |
| 1 PLACE ± . ± | | APP'D BY | SIGN | Dimensions | |
| DRAFT WHERE APPLICABLE MUST REMAIN WITHIN DIMENSIONS | | SCALE | | SHEET NO. DATE | |
| DESIGN DIMENSION <input checked="" type="checkbox"/> MM <input type="checkbox"/> IN. | | : 1 | | 1 OF 95/06/07 | |
| EQUIVALENT DIMENSION <input type="checkbox"/> MM <input type="checkbox"/> IN. | | SCALE | | MOLEX MOLEX EUROPE | |
| IF TWO DIMENSIONS ARE SHOWN THE UPPER IS THE DESIGN DIMENSION, LOWER IS SECONDARY | | SCALE | | PART NO. DWG NO. SIZE | |
| | | | | SDA-85013-0001 B | |

VIEW ON MATING SIDE

| | | | | | | | | | | | | | | | | | | | | | | |
|---|---|---|---|---|---|---|---|---|---|---|---|---|---|---|---|---|---|---|---|---|---|---|
| ∪ | A | A | A | A | A | A | A | A | A | A | A | A | A | A | A | A | A | A | A | A | A | A |
| ∩ | A | A | A | A | A | A | A | A | A | A | A | A | A | A | A | A | A | A | A | A | A | A |
| ∩ | A | A | A | A | A | A | A | A | A | A | A | A | A | A | A | A | A | A | A | A | A | A |

1 2 3 4 5 6 7 8 9 10 11 12 13 14 15 16 17 18 19 20 21 22 23 24 25 26 27 28 29 30 31 32 33 34 35 36 37 38 39 40 41 42 43 44 45 46 47 48 49 50 51 52 53 54 55 56 57 58 59 60 61 62 63 64 65 66 67 68 69 70 71 72 73 74 75 76 77 78 79 80 81 82 83 84 85 86 87 88 89 90 91 92 93 94 95 96

A = 96 STANDARD CONTACTS L-2,9

| | |
|-------------------|---|
| Marking | Standard |
| Performance level | G1/0 = Contact area perform. level1 / Termination tin |
| Flux proof | no |
| Fixing clip | no |
| Dimensions | SDA-85013-0001 sht.1 |
| Technical Data | PS-85013-0001 |

| | | | | |
|----------------|----------------|-------------------------|-------|-------|
| A | G1/0 | a1-32 | b1-32 | c1-32 |
| Contact symbol | Perform. level | Contact position number | | |

| | | | | |
|--|-----------------------|------|--|--|
| first release see ECN No. 2413 | REVISIONS | | FOR PREVIOUS REVISIONS SEE MRI LIST | |
| | LTR | ∇ | | |
| UNLESS OTHERWISE SPECIFIED TOLERANCES: ANGULAR ± 2° INCH METRIC | DRWG BY Ca | SIGN | CAD/CAM PROJECT NAME s8501323 s81 | SH. REV. |
| 3 PLACE ± . | CHK'D BY KN | SIGN | THIS DRAWING CONTAINS INFORMATION THAT IS PROPRIETARY TO MOLEX INC. & SHOULD NOT BE USED WITHOUT WRITTEN PERMISSION | |
| 2 PLACE ± . | APP'D BY JB | SIGN | | TITLE 96 pos. Male connector acc. DIN 41612 style R contacts arrangement |
| 1 PLACE ± . | SCALE | | SHEET NO. DATE 1 OF 1 97/02/20 | SIZE A |
| DRAFT WHERE APPLICABLE MUST REMAIN WITHIN DIMENSIONS DESIGN DIMENSION <input type="checkbox"/> MM <input type="checkbox"/> IN. EQUIVALENT DIMENSION <input type="checkbox"/> MM <input type="checkbox"/> IN. IF TWO DIMENSIONS ARE SHOWN, THE UPPER IS THE DESIGN DIMENSION, LOWER IS SECONDARY | | | | |
| | | | PART NO. 85013-2385 | DWG NO. SDA-85013-2385 |