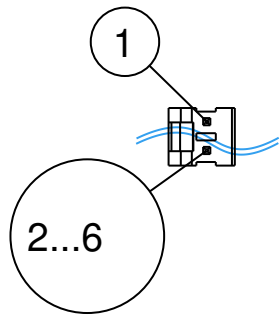
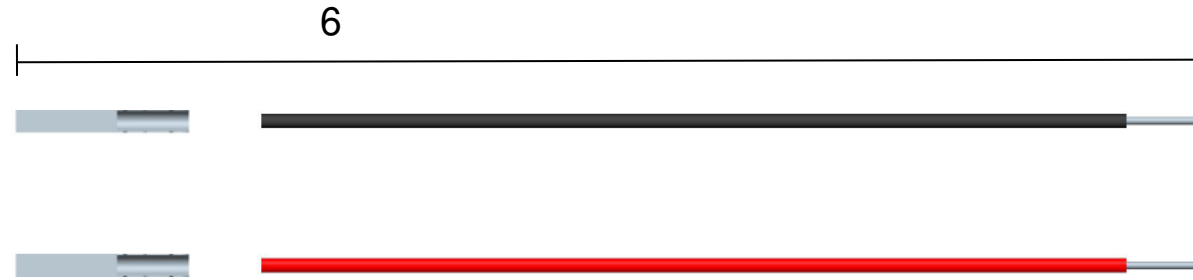
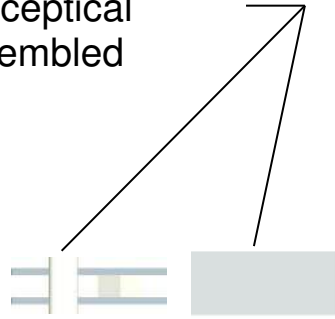
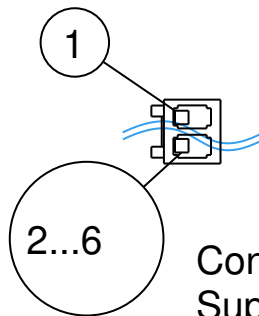


Mating receptical
to be assembled
as a set



Connector A
Supplier: 4UConn
Part #: 01951 (2,3,4,5,
SCALE 1.500

&6 poles)



Connector B
Supplier: 4UConn
Part #: 01931 (2,3,4,5, &6 poles)
Crimp pin part #: 01993
Wire Entry View
SCALE 1.500

Tolerances,
Unless noted-
0.0 +/-
0.00 +/-
0.000 +/-

Connector A Pin	Connector B Pin	Wire Type
1	1	Braided 24 AWG - Black
2	2	Braided 24 AWG - Red
3	3	Braided 24 AWG - Orange
4	4	Braided 24 AWG - Yellow
5	5	Braided 24 AWG - Green
6	6	Braided 24 AWG - Blue

MOLEX_TO_MOLEX_13_II_07

5 sets of cables with male and female
connectors
(sets of 2, 3, 4, 5, 6 wires in width)
Use the denoted wire colors up to given width

Units Inches

Drawn by Spark Fun Electronics

19 Apr 10

for Price Quote

Tolerance +/- .0625

Drafter

Scale 1.5