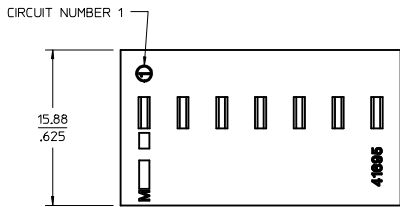


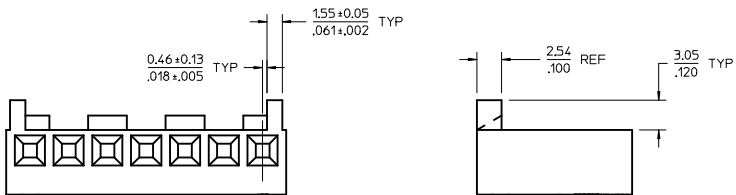
- NOTES:
1. MATERIAL: N - GLASS FILLED POLYESTER, UL94V-0, MOLDED NATURAL
  2. FINISH: SEE TERMINAL DRAWINGS
  3. PRODUCT SPECIFICATION: PS-08-50, PS-40-02, AND PS-45570-001
  4. PACKAGING INFORMATION: SEE LEGEND
  5. MATES WITH (3.96)/.156 CENTER HEADERS AND (1.14)/.045 SQUARE OR ROUND PINS
  6. HOUSING ACCEPTS STANDARD TERMINAL NOS.:  
 2478 (18-24 AWG) WITH (2.79)/.110 MAX. INSULATION DIA.  
 2578 (22-26 AWG) WITH (1.65)/.065 MAX. INSULATION DIA.  
 OR TRIFURCON TERMINAL NOS.:  
 6838 (18-24 AWG) WITH (2.79)/.110 MAX. INSULATION DIA.  
 7258 (22-26 AWG) WITH (1.65)/.065 MAX. INSULATION DIA.  
 OR MARKK TERMINAL NO.:  
 45570 (18-20 AWG) WITH (3.12)/.123 MAX. INSULATION DIA.
  7. BOW (.006 MM/MM) / .006 IN/IN.
  8. (0.13)/.005 MAX. FLASH ALLOWED ALONG DIMENSION B AND IN LOCKING WINDOW.
  9. THIS PART CONFORMS TO CLASS B REQUIREMENTS OF COSMETIC SPECIFICATION PS-45499-002.
  10. ALL 7-15 CIRCUIT PARTS AND 2-6 CIRCUIT PARTS MANUFACTURED BEFORE 9/21/2013 HAVE GEOMETRY ON THIS SHEET. SEE SHEET 2 FOR 2-6 CIRCUIT PARTS MANUFACTURED AFTER 9/21/2013.

NO. OF CKTS	DIM. A	DIM. B
2	(8.79) -.348	(3.96±.05) -.156±.002
3	(12.75) -.502	(7.92±.08) -.312±.003
4	(16.71) -.658	(11.89±.08) -.468±.003
5	(20.67) -.814	(15.85±.08) -.624±.003
6	(24.64) -.970	(19.81±.10) -.780±.004
7	(28.60) -1.126	(23.77±.10) -.936±.004
8	(32.56) -1.282	(27.74±.10) -1.092±.004
9	(36.53) -1.438	(31.70±.10) -1.248±.004
10	(40.49) -1.594	(35.66±.15) -1.404±.006
11	(44.45) -1.750	(39.62±.15) -1.560±.006
12	(48.41) -1.906	(43.59±.15) -1.716±.006
13	(52.37) -2.062	(47.55±.15) -1.872±.006
14	(56.34) -2.218	(51.51±.18) -2.028±.007
15	(60.30) -2.374	(55.47±.18) -2.184±.007

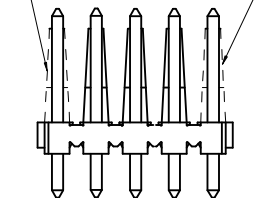


### OPTION CODE D

RAMP WITH POLARIZING RIBS



WHEN MATING OPTION CODE D HOUSING WITH BREAKAWAY FRICTION LOCK OR POLARIZING HEADER, THE END FRICTION LOCKS OR POLARIZING WALLS MUST BE REMOVED.



WHEN MATING WITH BREAKAWAY HEADERS THE FRICTION LOCK WALL MUST BE REMOVED

41695 - \* - \* N - ##

MATERIAL CODE  
N = MOLDED NATURAL

OPTION CODE

CODE	RAMP	POLARIZING RIBS	PACKAGING
A	NO	NO	BULK PER PK-41695-001
B	YES	NO	BULK PER PK-41695-001
D	YES	YES	BULK PER PK-41695-001

VOID CODE

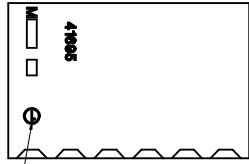
BLANK=NO VOIDS  
NO.-NO. CORRESPONDS TO CKT. NO. VOIDED  
MULT. VOIDS=START WITH 51

NO. OF CKTS.

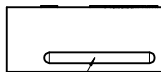
<b>ADD ALT. GEOMETRY</b> EC NO: UCP2012-2829 DRAWN BY: MK IPPER 2012/10/25 CHECKED BY: CHYK BANDERSON 2012/10/26 APPROVED BY: APPRFSMTH 2013/10/04	QUALITY SYMBOLS ∇=0 ∇=0 ∇=0	GENERAL TOLERANCES (UNLESS SPECIFIED) mm INCH	DIMENSION STYLE <b>MM ONLY</b>	SCALE <b>4:1</b>	DESIGN UNITS <b>METRIC</b>	THIRD ANGLE PROJECTION
		4 PLACES ± --- ± --- 3 PLACES ± --- ± --- 2 PLACES ± 0.13 ± --- 1 PLACE ± 0.25 ± --- 0 PLACE ± --- ± ---	DRAWN BY: MK IPPER 2012/10/25 CHECKED BY: BANDERSON 2012/10/26 APPROVED BY: FSMITH 2013/10/04	MATERIAL NO. <b>SEE CHART</b>	DOCUMENT NO. <b>SD-41695</b>	SHEET NO. <b>1 OF 2</b>
		ANGULAR ±1/2° DRAFT WHERE APPLICABLE MUST REMAIN WITHIN DIMENSIONS	TITLE <b>KK (3.96)/.156 CRIMP TERMINAL HOUSING</b>			

**molex**

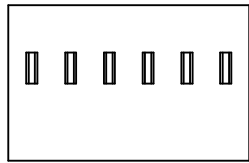
OPTION CODE A



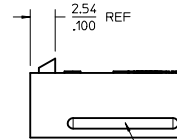
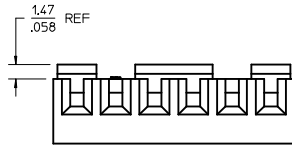
CIRCUIT NUMBER 1



GROOVE MAY BE PRESENT (BOTH SIDES)



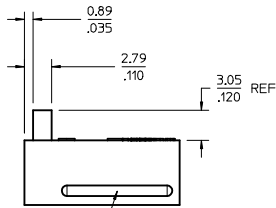
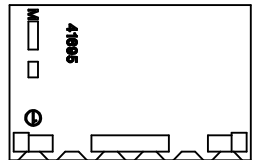
OPTION CODE B



GROOVE MAY BE PRESENT (BOTH SIDES)



OPTION CODE D



GROOVE MAY BE PRESENT (BOTH SIDES)

41695-N-AN-

PART NO.	ENG. NO.	VOIDS
	NOT AVAILABLE	
09-50-8020	41695-N-A2	
09-50-8030	41695-N-A3	
09-50-8040	41695-N-A4	
09-50-8050	41695-N-A5	
09-50-8060	41695-N-A6	
09-50-8070	41695-N-A7	
09-50-8080	41695-N-A8	
09-50-8090	41695-N-A9	
09-50-8100	41695-N-A10	
09-50-8110	41695-N-A11	
09-50-8120	41695-N-A12	
09-50-9085	41695-N-A8-2	2
41695-0001	41695-N-A6-3	3
41695-0002	41695-N-A5-4	4

41695-N-BN-

PART NO.	ENG. NO.	VOIDS
	NOT AVAILABLE	
09-50-8021	41695-N-B2	
09-50-8031	41695-N-B3	
09-50-8041	41695-N-B4	
09-50-8051	41695-N-B5	
09-50-8061	41695-N-B6	
09-50-8071	41695-N-B7	
09-50-8081	41695-N-B8	
09-50-8091	41695-N-B9	
09-50-8101	41695-N-B10	
09-50-8111	41695-N-B11	
09-50-8121	41695-N-B12	
09-50-8131	41695-N-B13	
09-50-8141	41695-N-B14	
09-50-8151	41695-N-B15	
09-50-9030	41695-N-B3-2	2
	41695-N-B4-2	2
	41695-N-B5-2	2
	41695-N-B9-2	2
09-50-9121	41695-N-B12-2	2
	41695-N-B14-2	2
09-50-9150	41695-N-B15-14	14
09-50-9060	41695-N-B6-5	5
09-50-9070	41695-N-B7-6	6
09-50-9071	41695-N-B7-2	2
09-50-9040	41695-N-B4-3	3
09-50-9090	41695-N-B9-7	7
	41695-N-B14-13	13
09-50-9136	41695-N-B13-5	5
09-50-9137	41695-N-B13-8	8
09-50-9050	41695-N-B5-51	2,4
09-50-9061	41695-N-B6-3	3
09-50-9080	41695-N-B8-2	2

41695-N-DN-

PART NO.	ENG. NO.	VOIDS
	NOT AVAILABLE	
09-50-8023	41695-N-D2	
09-50-8033	41695-N-D3	
09-50-8043	41695-N-D4	
09-50-8053	41695-N-D5	
09-50-8063	41695-N-D6	
09-50-8073	41695-N-D7	
09-50-8083	41695-N-D8	
09-50-8093	41695-N-D9	
09-50-8103	41695-N-D10	
09-50-8113	41695-N-D11	
09-50-8123	41695-N-D12	
09-50-8133	41695-N-D13	
09-50-8143	41695-N-D14	
09-50-8153	41695-N-D15	
	41695-N-D15-12	12
09-50-9053	41695-N-D5-2	2
09-50-9094	41695-N-D9-3	3
09-50-9033	41695-N-D3-2	2
09-50-9043	41695-N-D4-2	2
09-50-9063	41695-N-D6-2	2
09-50-9073	41695-N-D7-2	2
09-50-9044	41695-N-D4-3	3
41695-0003	41695-N-D07-5	5

NOTES:

- 2-6 CIRCUIT PARTS MANUFACTURED AFTER 9/21/2013 HAVE GEOMETRY ON THIS SHEET. SEE SHEET 1 FOR 7-15 CIRCUIT PARTS AND 2-6 CIRCUIT PARTS MANUFACTURED PRIOR TO 9/21/2013.

<b>ADD ALT. GEOMETRY</b> EEC NO. UCFP2012-2829 DRAWN BY MK IPPER 2012/10/25 CHECKED BY CHYK BANDERSON 2012/10/26 APPROVED BY APPR:FSM TH 2013/10/04	<b>QUALITY SYMBOLS</b> ∇=0 ∇=0 ∇=0	<b>GENERAL TOLERANCES (UNLESS SPECIFIED)</b>		<b>DIMENSION STYLE</b> MM ONLY		SCALE 4:1	DESIGN UNITS METRIC	THIRD ANGLE PROJECTION		
		4 PLACES ± mm INCH 3 PLACES ± --- ± --- 2 PLACES ± 0.13 ± --- 1 PLACE ± 0.25 ± --- 0 PLACE ± --- ± ---	DRAWN BY DATE MK IPPER 2012/10/25		CHECKED BY DATE BANDERSON 2012/10/26		TITLE KK (3,96)/156 CRIMP TERMINAL HOUSING			
		ANGULAR ±1/2° DRAFT WHERE APPLICABLE MUST REMAIN WITHIN DIMENSIONS		APPROVED BY DATE FSMITH 2013/10/04		MATERIAL NO. SEE CHART			DOCUMENT NO. SD-41695	SHEET NO. 2 OF 2
		THIS DRAWING CONTAINS INFORMATION THAT IS PROPRIETARY TO MOLEX INCORPORATED AND SHOULD NOT BE USED WITHOUT WRITTEN PERMISSION								