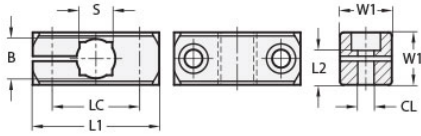




MT15-CC1W-M6-A

Ruland One-Way Connector Clamp, Thru Hole 15mm, L 45mm, Aluminum



Description

Ruland MT15-CC1W-M6-A is a one-way base connector with a 45mm base diameter, 15mm round thru holes, 12mm square thru hole, and M6 clamp screw. It is designed to fit with Ruland tubes that begin with M6. MT15-CC1W-M6-A is aluminum and screws are 304 stainless steel for use in most industrial applications. This one-way base connector is typically used as a base in support structures for mounting sensors, screens, reflectors, plexiglass machine guards, and other industrial components. It can be permanently installed on extruded aluminum frames, sheet metal, and other surfaces using M6 hardware or the user can opt for portability by using MAGNET-57-32 magnetic base. MT15-CC1W-M6-A is a cost effective option when compared to two-way bases for users that only require a tube in one orientation. MT15:16:20-ALK-M6-25 adjustable clamping handles can be used in place of standard hardware if rapid fine repositioning of the tube is required. MT15-CC1W-M6-A is manufactured by Otto Ganter, inventoried by Ruland, and RoHS3 compliant.

Product Specifications

Thru Hole Diameter B	15 mm	Thru Hole Tolerance	+0.11/-0 mm
Square Thru Hole S	12 mm	Center To Center LC	32 mm
Width & Height W1	20 mm	Overall Length L1	45 mm
Mounting Screw SC	M6	Clamp Screw CL	M6
Screw Length L2	14 mm	Weight (lbs)	0.066800
Material Specification	Aluminum	Manufacturer	JW Winco/ Otto Ganter
UPC	634529231319	Country of Origin	Germany
Tariff Code	7609.00.0000	UNSPC	31162908