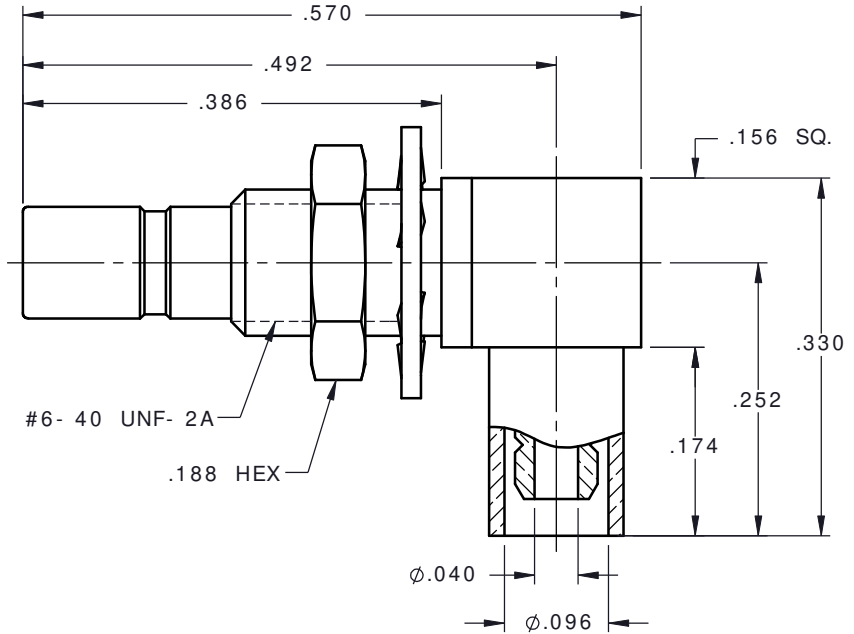
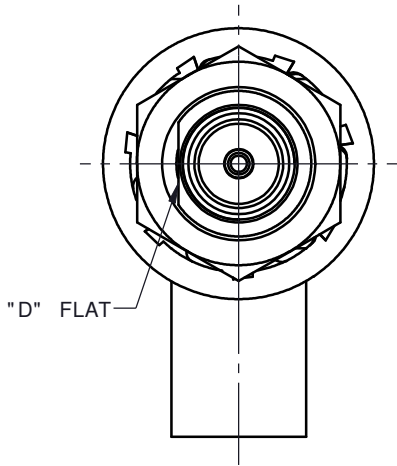


| REVISIONS | | | |
|-----------|-----------------|------------|----------|
| REV. | DESCRIPTION | DATE | APPROVED |
| A | INITIAL RELEASE | 11/ 20/ 09 | M.J. |
| B | ECN #7967 | 07/ 22/ 10 | D.N. |





NOTES:

MATERIALS:

- CONTACT = BERYLLIUM COPPER PER ASTM B196, ALLOY C17300, TEMPER TD04.
- INSULATORS = VIRGIN WHITE TEFLON PER ASTM D1710, GRADE 1, TYPE I, CLASS "B".
- CRIMP SLEEVE = SEAMLESS LOWLEAD BRASS TUBE, ALLOY 330, SOFT ANNEAL TEMPER, .025/ .060 GRAIN SIZE OR SEAMLESS COPPER TUBE PER ASTM B75, TYPE C12000, TEMPER: LIGHT ANNEAL O50 EXCEPT YIELD STRENGTH.
- LOCKWASHER = PHOSPHOR BRONZE PER ASTM B139, COPPER ALLOY C53400, TEMPER H04.
- SHRINK SLEEVE RNF 100, YELLOW (NOT SHOWN).
- ALL OTHER METAL PARTS = BRASS PER ASTM B16, ALLOY C36000, TEMPER H02.

FINISHES:

- CONTACT = GOLD PLATE PER MIL- G- 45204, TYPE II, CLASS 1, GRADE C, OVER .00010 TO .00020 STRESS FREE SULFAMATE NICKEL PER QQ- N- 290.
- ALL OTHER METAL PARTS = GOLD PLATE PER MIL- G- 45204, TYPE II, CLASS 0, GRADE C, OVER .00010 TO .00020 COPPER STRIKE PER MIL- C- 14550.

| | | | | |
|---|-------|---------------------------------|---|-------------------------------|
| UNLESS OTHERWISE SPECIFIED DIMENSIONS ARE IN INCHES TOLERANCES ON | | DWN: M.J. DATE: 11/ 20/ 09 |  Property of Radiall This document cannot be reproduced or communicated to a third party without prior written permission of RADIALL. | |
| DECIMAL | ANGLE | CHKD: D.N. DATE: 11/ 20/ 09 | | |
| | | APVD: J.M. DATE: 11/ 20/ 09 | SSMB RIGHT ANGLE JACK BULKHEAD REAR MOUNT/ CRIMP TYPE FOR RG- 178 & SIMILAR CABLES | |
| REFERENCE: | | MATERIALS & FINISHES: SEE NOTES | | |
| ORIGINATED: M.J. DATE: 11/ 20/ 09 | | | DWG NO.: 7406- 1521- 002  | REV: B SHEET 1 OF 1 |

7406- 1521- 002