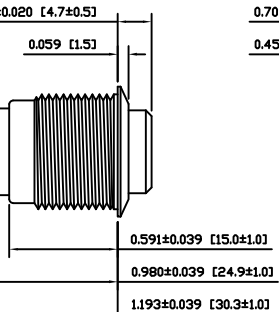
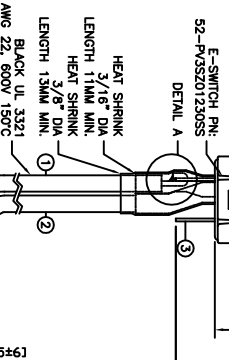


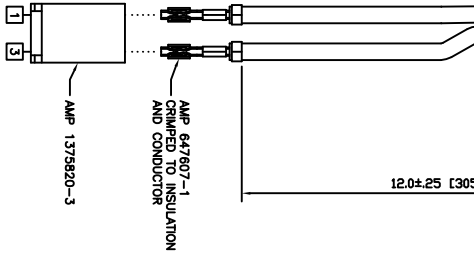
0.709 [18.0]
0.453 [11.5]



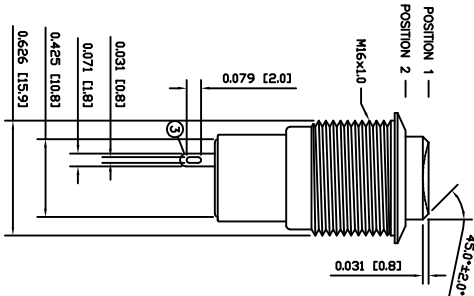
0.185±0.020 [4.7±0.5]
0.059 [1.5]
0.591±0.039 [15.0±1.0]
0.980±0.039 [24.9±1.0]
1.193±0.039 [30.3±1.0]



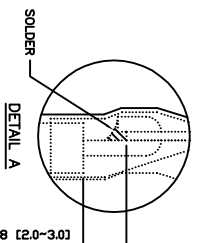
E-SWITCH PIN:
52-PV3SZ01230SS
DETAIL A
HEAT SHRINK
LENGTH 1.1MM MIN.
HEAT SHRINK
LENGTH 1.3MM MIN.
HEAT SHRINK
LENGTH 1.3MM MIN.
BLACK UL 3321
AWG 22, 600V 150°C



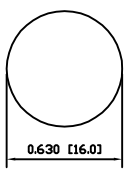
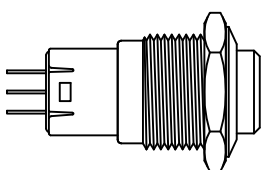
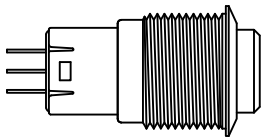
AMP 647807-1
CRIMPED TO INSULATION
AND CONDUCTOR
AMP 13758920-3



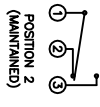
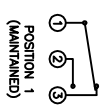
POSITION 1
POSITION 2
M16x1.0
45.0°±2.0°
0.031 [0.8]
0.079 [2.0]
0.031 [0.8]
0.071 [1.8]
0.429 [10.8]
0.626 [15.9]



SOLDER
DETAIL A
0.079-0.118 [2.0-3.0]



SUGGESTED PANEL CUTOUT
MAXIMUM PANEL THICKNESS: 0.315 [8.0mm]



SUGGESTED PANEL CUTOUT

SCHEMATIC

SPECIFICATIONS

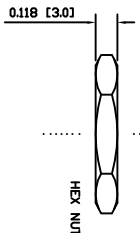
FUNCTION:
1P2T ON-ON
RATING:
-003-SQF1-2000 (200901C07839):
2A 49VDC [100A]
CONTACT RESISTANCE:
Initial: 50mΩ Max. at 1A 12VDC
1,500MΩ Min. at 500VDC
INSULATION RESISTANCE:
2,000VAC Min. for 1 Minute
ELECTRICAL LIFE:
50,000 Cycles
MECHANICAL LIFE:
200,000 Cycles
TEMPERATURE:
Operating: -25°C to 85°C
APPROVALS:
NDP
COMPLIANT

COLORS AND FINISH

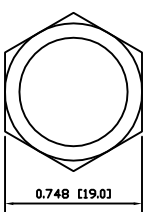
BEZEL:
Stainless Steel
Polished Finish
ACTUATOR:
Stainless Steel
Polished Finish
ILLUMINATION:
None
MARKING:
None

MATERIALS

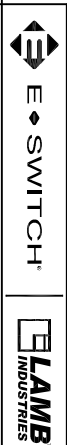
BUSING:
Stainless Steel (304)
BASE:
Polybutylene Terephthalate (PBT)
ACTUATOR:
Stainless Steel (304)
Polycarbonate (PC)
INNER ASSEMBLY:
Polyoxymethylene (POM)
Polycarbonate (PC)
Polybutylene Terephthalate (PBT)
Silver Plated Brass (H62)
Beryllium Copper
SPRING:
Stainless Steel (304)
CONTACTS:
Silver/Cadmium Oxide (AgCdO)
TERMINALS:
Silver Plated Brass (H62)



EXPLODED VIEW
HEX NUT
0.118 [3.0]



ASSEMBLED VIEW
0.748 [19.0]



PV3SZ0121130SS

REV.	DATE	BY	CHK	APP.
1	9/13/11	REL.		
2	09/07/10	CAB		
3	10/01/11	CAB		
4	09/12/23	CAB		

THE INFORMATION CONTAINED IN THIS DOCUMENT IS PROPRIETARY TO E-SWITCH AND IS NOT TO BE COPIED OR TRANSMITTED IN ANY FORM OR BY ANY MEANS, ELECTRONIC OR MECHANICAL, INCLUDING PHOTOCOPYING, RECORDING, OR BY ANY INFORMATION STORAGE AND RETRIEVAL SYSTEM.

REV.	DATE	BY	CHK	APP.
1	9/13/11	REL.		
2	09/07/10	CAB		
3	10/01/11	CAB		
4	09/12/23	CAB		

REV.	DATE	BY	CHK	APP.
1	9/13/11	REL.		
2	09/07/10	CAB		
3	10/01/11	CAB		
4	09/12/23	CAB		

REV.	DATE	BY	CHK	APP.
1	9/13/11	REL.		
2	09/07/10	CAB		
3	10/01/11	CAB		
4	09/12/23	CAB		

REV.	DATE	BY	CHK	APP.
1	9/13/11	REL.		
2	09/07/10	CAB		
3	10/01/11	CAB		
4	09/12/23	CAB		