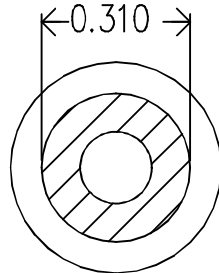
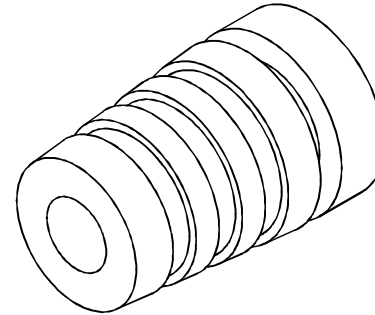
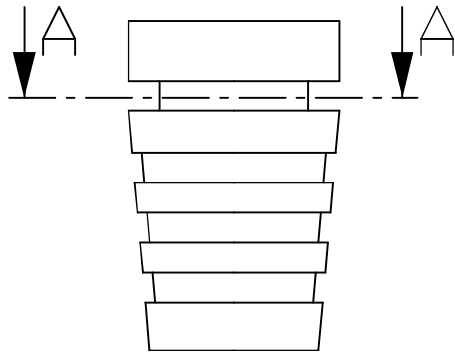
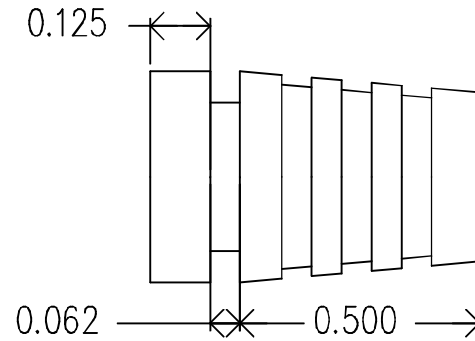
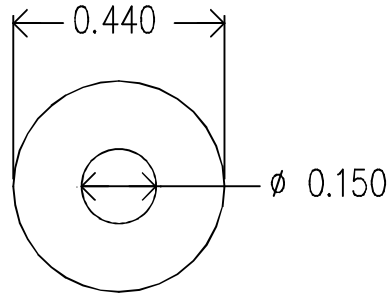


ZONE		REV.	REVISIONS	DATE	APPROVED
			DESCRIPTION		



A-A

MOLD MATERIAL: ISC P/N: 5000214, M1472, PVC, BLACK, RoHS

ISC ENGINEERING
CONTROLLED COPY
 Rich Fierro 01/14/2019

Dimensions are subject to change.
 PROPRIETARY AND CONFIDENTIAL
 THE INFORMATION CONTAINED IN THIS DRAWING IS THE SOLE PROPERTY OF ISC ENGINEERING. ANY REPRODUCTION IN PART OR AS A WHOLE WITHOUT THE WRITTEN PERMISSION OF ISC ENGINEERING IS PROHIBITED.

		DIMENSIONS ARE IN INCHES		NAME	DATE	ISC Engineering 4351 Schaefer Ave, Chino, CA 91710 Ph: 909-596-3315 Fax: 909-596-3335 www.iscengineering.com www.overmoldtooling.com
		TOLERANCES:		DRAWN	R FIERRO	
		FRACTIONAL ±		CHECKED		
		ANGULAR: MACH ± BEND ±		ENG APPR.		
		TWO PLACE DECIMAL ±		MFG APPR.		
		THREE PLACE DECIMAL ±		Q.A.		
		MATERIAL ---		COMMENTS:		1461040-150-B-310-440-0
		FINISH ---				
NEXT ASSY	USED ON					SIZE A
APPLICATION		DO NOT SCALE DRAWING				DWG. NO. 1460050
						REV.
				SCALE: 5:1		WEIGHT:
						SHEET 1 OF 1