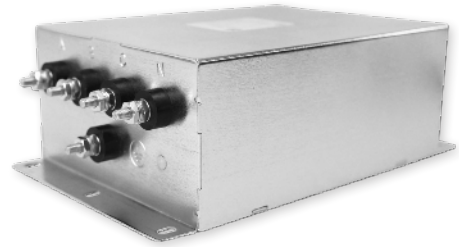


# 3L

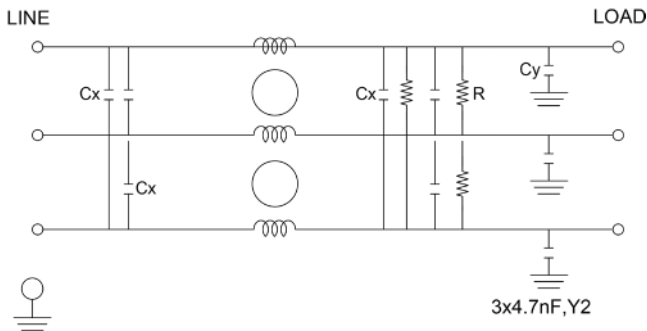
## 3 PHASE Π FILTER

»  
»  
»  
»  
»  
»



### ELECTRICAL SCHEMATIC

#### DELTA - SUFFIX "D"



### SPECIFICATIONS

OPERATING FREQUENCY	50/60HZ
MAX. OPERATING VOLTAGE	440 VAC +10%
TERMINALS (-T)	STUDS:10-32(15-45A)

TYP. WEIGHT, LBS (KG)	6.36-10 (2.88-4.53)
-----------------------	---------------------

<b>LEAKAGE CURRENT</b>	
@ 480 VAC 60 HZ	1.6 mA Max.

<b>HIPOT RATINGS</b>	
LINE TO GROUND	2200 VDC - 3200 VDC

### TYPICAL APPLICATIONS

- ✓ High Power Rectifiers
- ✓ Uninterrupted Power Supplies
- ✓ Processing Equipment
- ✓ Alternative Energy (EV Charging & Solar)
- ✓ Factory Machinery

### HOW TO ORDER

3F15 L F



**NOTE:** USE ANY COMBINATION OF -X (AMPS) WITH ANY -Y RATINGS  
E.G. **3F15 LF**(15 AMPS, LOW PROFILE CASE, FLANGE MOUNT)

# 3L

## 3-PHASE $\Pi$ FILTER

MODEL NO.	RATED CURRENT (A) @ 40° C	Y-CAP, nF	LEAKAGE CURRENT, mA @ 250V AC, 60 Hz	TERMINAL OPTIONS		MAX. DIMENSIONS" (MM)		
				(QD)INPUT/OUTPUT	(S) INPUT/OUTPUT	WIDTH	(LENGTH)	HEIGHT
3L15 L	15							



# 3L

## 3-PHASE $\Pi$ FILTER

### TYPICAL INSERTION LOSS, dB (50/50 Ohm)

Amps	Freq (MHz)	0.15	0.5	1.0	10	30
15	CM (dB)	35	60	49	62	69
	DM (dB)	30	42	44	61	69
30	CM (dB)	35	60	49	62	69
	DM (dB)	30	42	44	61	69
45	CM (dB)	35	60	49	62	69
	DM (dB)	30	42	44	61	69