

1

2

3

4

A

B

C

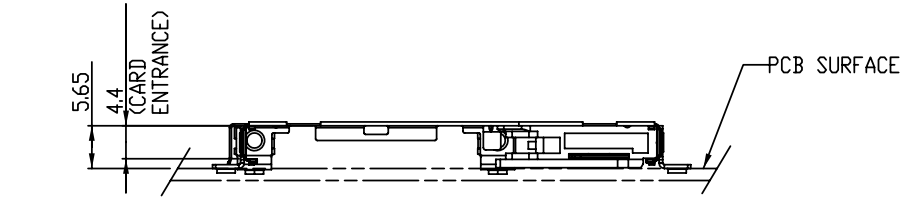
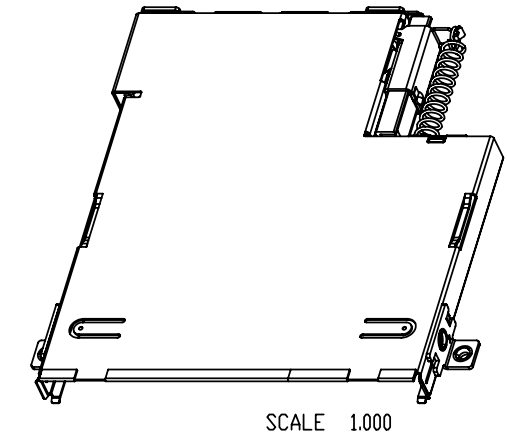
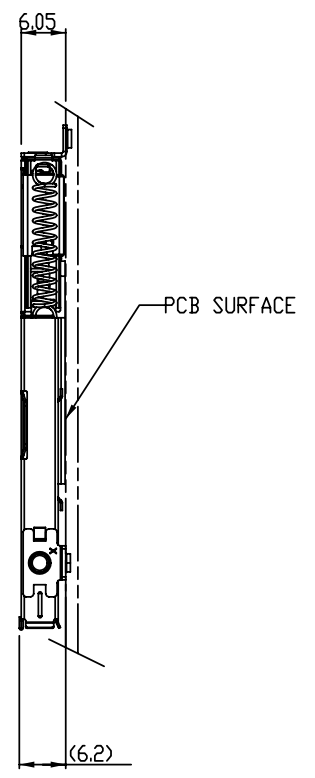
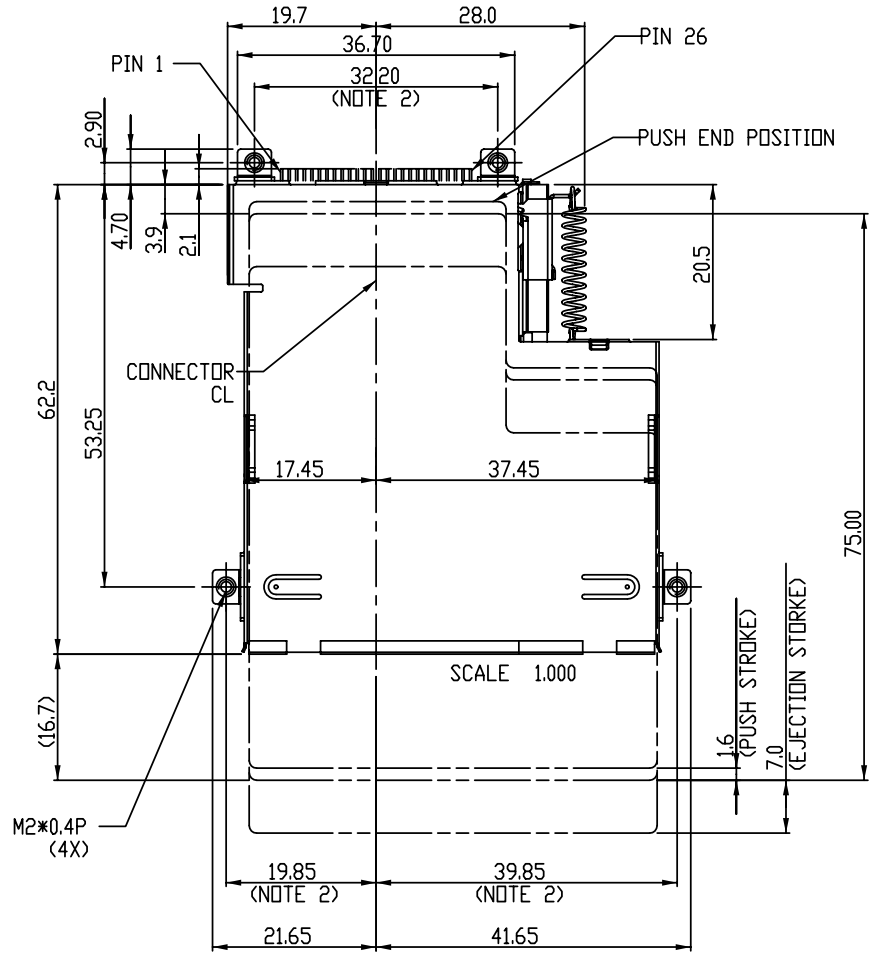
D

A

B

C

D



|                                      |           |
|--------------------------------------|-----------|
| tolerance unless otherwise specified |           |
| linear                               | .X ± .5   |
|                                      | .XX ± .30 |
| angles                               | 0° ± 2°   |

|                    |   |          |                |                      |            |          |
|--------------------|---|----------|----------------|----------------------|------------|----------|
| www.fciconnect.com |   |          | ✓              | tolerance ASME Y14.5 | projection | MM       |
| Dr                 | KENNY TAI                                       | 02/17/05 | Product family |                      | size       | A4       |
| Eng                | KENNY TAI                                       | 02/17/05 | Spec ref       | *                    | Scale      | 1.000    |
| Chr                | KENNY TAI                                       | 02/17/05 | Material       | SEE NOTES            | ECN        | N10-0413 |
| Appr               | JOSEPH HSIA                                     | 02/17/05 |                |                      |            |          |
| title              | FCJ TOP MOUNT, CARD PUSH EXPRESSCARD HOST MECH. |          | dwg no         | 10053827             |            | Rev. C   |
| catalog no         | 10053827  |          | CUSTOMER       | sheet 1 of 2         |            |          |

| rev | ecn no   | dr  | date       |
|-----|----------|-----|------------|
| A   | T05-0116 | TAI | 05/30/05   |
| B   | T05-0244 | TAI | 11/02/05   |
| C   | N10-0413 | SH  | 2010-12-10 |
| -   | -        | -   | -          |
| -   | -        | -   | -          |
| -   | -        | -   | -          |



Copyright FCJ.

REV F - 2006-04-17

1

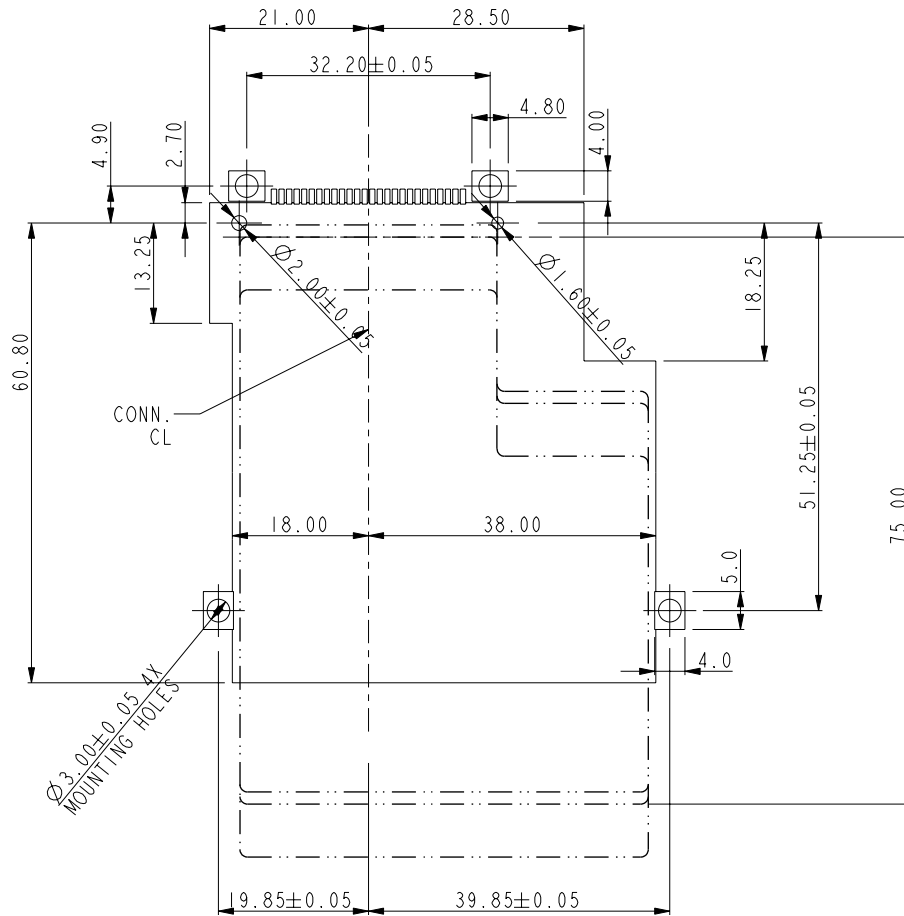
2

3 PDM: Rev:C

STATUS: Released

4 Printed: Dec 22, 2010

| PART NO.       | MOUNTING | STAND-OFF | HOST CONN P/N     | PRODUCT SPEC. | PACKING SPEC. | NOTE      |
|----------------|----------|-----------|-------------------|---------------|---------------|-----------|
| 10053827-00A   | ABOVE    | 0MM       | 10053826-X00AXXLF | GS-12-301     | GS-14-295     | LEAD FREE |
| 10053827-00ALF | ABOVE    | 0MM       | 10053826-X00AXXLF | GS-12-301     | GS-14-295     | LEAD FREE |

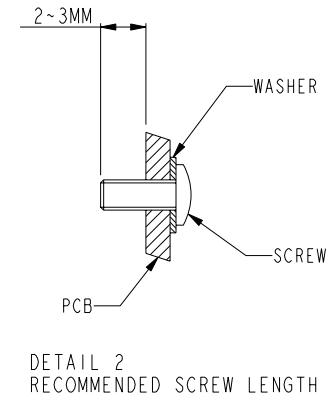


SCALE 1.000

NO MOUNTING  
PART AREA

NOTE:

1. 4 M2\*0.4P SCREWS WITH WASHER ARE REQUIRED.
2. SHOW DIMENSION AFTER FASTENED TO PCB.
3. SEE HOST CONNECTOR DRAWINGS FOR PCB LAYOUT DETAIL.
4. RECOMMENDED TIGHTING TORQUE 1.6~1.8 KGF-CM.
5. SEE DETAIL 2 FOR RECOMMENDED SCREW LENGTH.



|  |                        |                    |           |
|--|------------------------|--------------------|-----------|
|  | TOP MOUNT, CARD PUSH   | dwg no<br>10053827 | Rev.<br>C |
|  | EXPRESSCARD HOST MECH. |                    |           |