

PART NUMBER	REV	FIRST USED	TERMINATOR	FEED TYPE	DESCRIPTION
1339761-1	A	-	BENCH & LEADMAKER	MECH POST FEED	HD-I APPLICATOR
7-1339761-1	A	-	BENCH & LEADMAKER	MECH POST FEED	-1 AND SPARE PARTS
7-1339761-7	A	-	-	-	SPARE PARTS KIT

### CRIMP DATA STOCKO TERMINAL AMP CRIMP SPECS

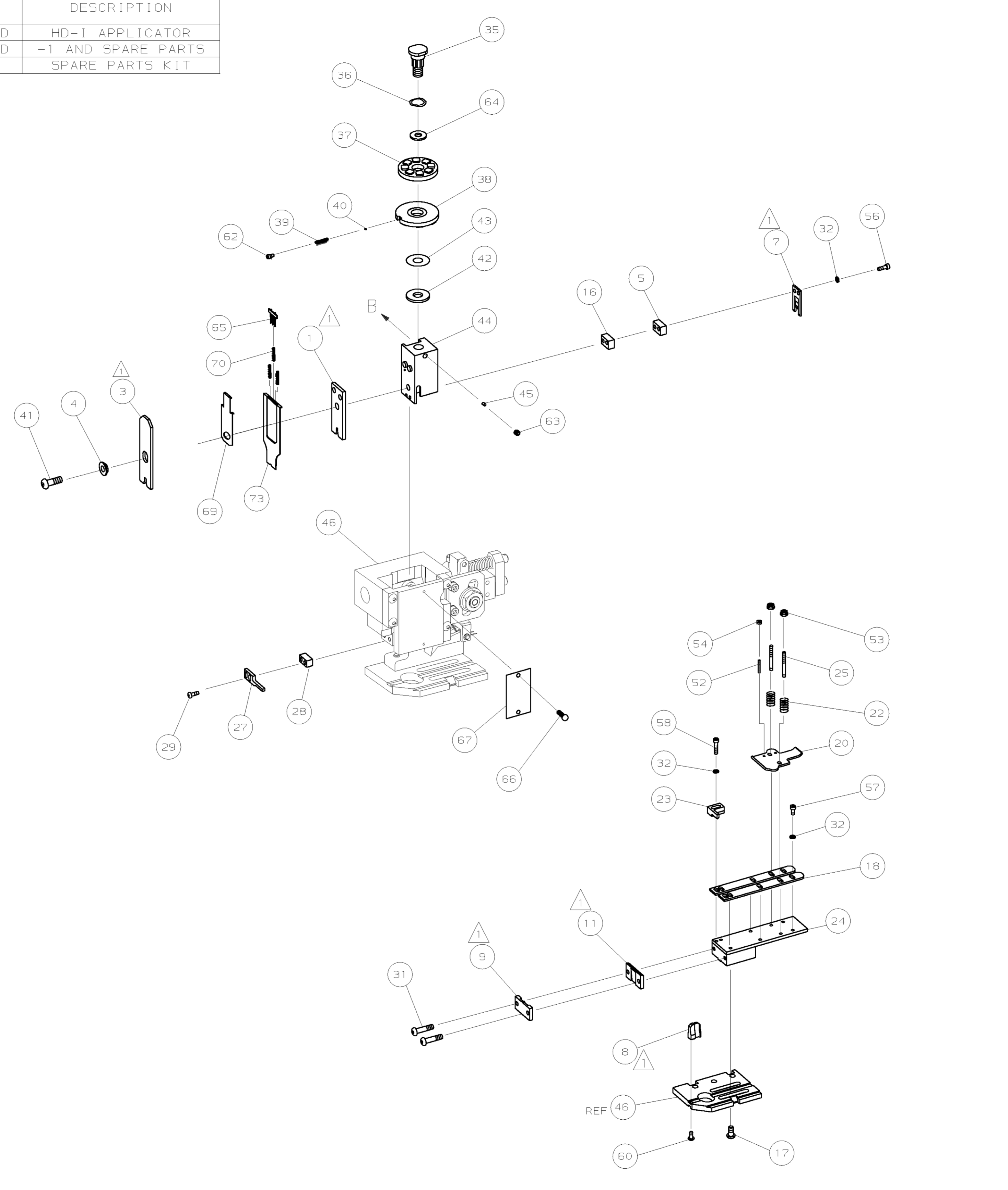
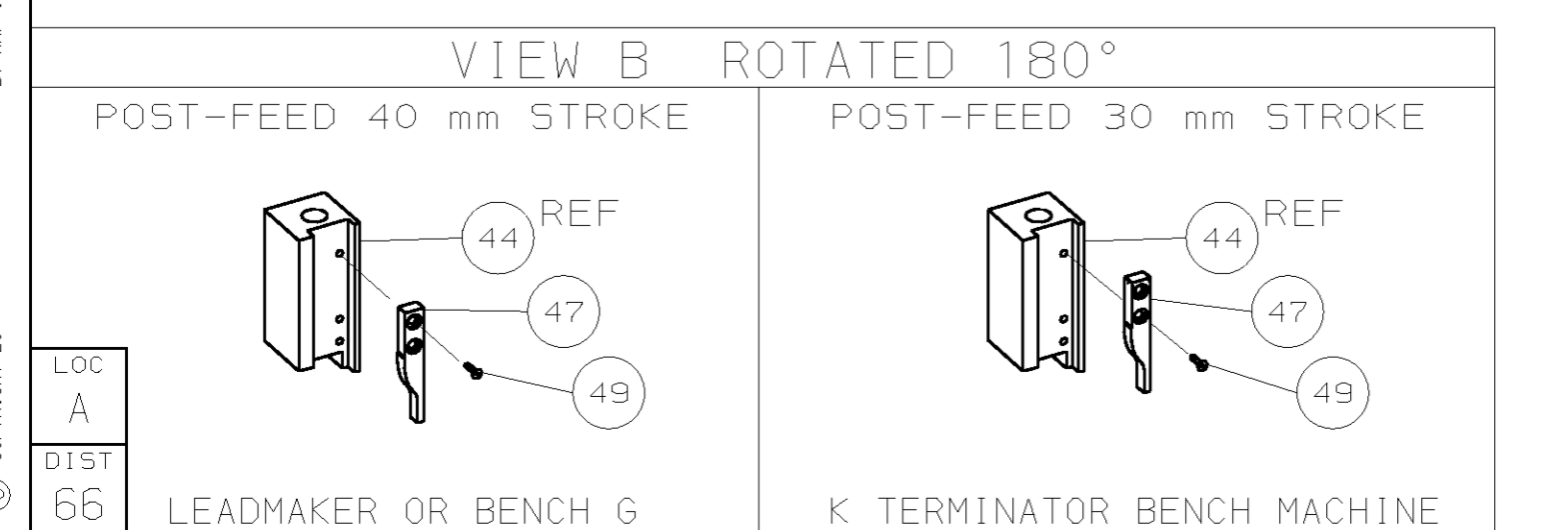
TERMINAL NAME: FASTON 4.8 TAB			
CRIMP	SIZE	TYPE	RANGE
WIRE	1.57 [0.062 IN]	F	0.14-0.34mm <sup>2</sup> or 24-22 AWG
INSUL	2.03 [0.080 IN]	F	1.00-1.75 [0.039-.069 IN]
WIRE STRIP LENGTH		APPL INSTRUCTION	
4.05-4.85 [0.159-.191 IN]		408-8323	
TERMINAL	STOCKO	-	FEED
APPL SPEC	F033	-	18.00 [0.709 IN]

### TERMINALS APPLIED

AMP PN	MFR PN		
1572647	R5B 7603.028 F 4.8-0.2	-	-
-	-	-	-
-	-	-	-
-	-	-	-
-	-	-	-
-	-	-	-
-	-	-	-
-	-	-	-
-	-	-	-
-	-	-	-

WIRE SIZE	CRIMP HEIGHT	PIN PN AND LENGTH [IN]
mm <sup>2</sup> AWG		
0.34mm <sup>2</sup>	1.20 ±0.02 [0.047 ±0.0008 IN]	2-354779-1 [0.3095]
0.25mm <sup>2</sup>	1.15 ±0.02 [0.045 ±0.0008 IN]	2-354779-6 [0.3120]
0.14mm <sup>2</sup>	1.08 ±0.02 [0.043 ±0.0008 IN]	3-354779-0 [0.3140]
-	-	-
-	-	-
-	-	-
-	-	-
-	-	-
-	-	-
-	-	-
-	-	-
-	-	-

- RECOMMENDED SPARE PARTS.
- 2. GREASE RAM, CAM, CAM FOLLOWER AND FEED ROD LIGHTLY.
- 3. LUBRICATE DAILY PER THE APPLICATOR INSTRUCTION SHEET SUPPLIED WITH THE APPLICATOR.
- 4. CRIMP WIDTHS LISTED HAVE BEEN CALCULATED BY TYCO LTD IN RELATION TO STOCKO CRIMP HEIGHTS.



QTY	REV	PART NO	DESCRIPTION	ITEM NO		
-	1	1	1490525-1	DEPRESSOR, WIRE	73	
-	1	1	1339761	PRINT, APPLICATOR LOG SHEET	72	
-	1	1	1338705-2	DOCUMENTATION PACKAGE	71	
-	3	3	2-23147-2	SPRING, DEPRESSOR	70	
-	1	1	1490524-2	SPACER, DEPRESSOR	68	
-	1	1	461264-1	PLATE, IDENTIFICATION	67	
-	2	2	21017-2	SCR,DRIVE (#2X.19) ID PLATE	66	
-	1	1	1424350-1	HOLDER, PIN, WIRED	65	
-	1	1	986950-1	WASHER, FLAT PRECISION	64	
-	1	1	3-18031-0	SCR,SKT SET (M6X6) RAM	63	
-	1	1	18023-9	SCR,SKT CAP (M4X6) CP D5C	62	
-	1	1	18024-7	SCR,BHC (M4X10) ANVIL	61	
-	1	1	18024-7	SCR,BHC (M4X10) ANVIL	60	
-	2	2	1-18023-3	SCR,SHC (M4X16) HOLD DOWN	58	
-	5	5	18023-9	SCR,SHC (M4X6) STRIP GUIDE	57	
-	2	2	1-18023-2	SCR,SHC (M4X12) SLUG BLADE	56	
-	2	2	18029-1	NUT, HEX (M3) DRAG	55	
-	2	2	986965-1	NUT, HEX SL (M4) DRAG STUD	54	
-	2	2	2-18032-2	SCR,SKT SET (M3X10) DRAG	53	
-	1	1	18024-3	SCR,BHC (M3X10) CAM	51	
-	1	1	18024-3	SCR,BHC (M3X10) CAM	50	
-	1	1	1338676-1	CAM, POST-FEED 30 & 40 mm ST	48	
-	1	1	1338662-1	APPLICATOR, BASIC (SUBASSY)	47	
-	1	1	690191-1	PLUG, NYLON	46	
-	1	1	1320998-1	RAM	45	
-	1	1	690125-1	WASHER, LAMINATED	44	
-	1	1	690124-1	WASHER, RAM	43	
-	1	1	2-18024-6	SCREW,BHC (M8X25) CRIMPER	42	
-	1	1	23241-1	BALL, STEEL	41	
-	1	1	2-22278-7	SPRING, COMPRESSION	40	
-	1	1	1320922-1	DISC, INSULATION	39	
-	1	1	354777-1	WIRE DISC, PLASTIC	38	
-	1	1	22480-5	WASHER, SPRING	37	
-	1	1	690212-1	POST, RAM	36	
-	1	1	690212-1	POST, RAM	35	
-	9	9	18025-2	WASHER, LOCK (M4) SHEAR BL	34	
-	2	2	1-18024-0	SCR,BHC (M4X20) SHEAR PL	33	
-	2	2	18024-8	SCR,BHC (M4X12) STRIPPER	32	
-	1	1	3-690451-2	SPACER, STRIPPER	31	
-	1	1	240639-1	STRIPPER	30	
-	2	2	1320906-1	DRAG, STUD	29	
-	1	1	1320995-1	PLATE, STRIP GUIDE	28	
-	1	1	240825-7	PLATE, STRIP HOLD DOWN	27	
-	2	2	4-22281-1	SPRING, DRAG	26	
-	1	1	1338665-1	DRAG, STOCK	25	
-	2	2	1338663-2	GUIDE, LOWER STRIP	24	
-	4	4	1-18024-8	SCR,BHC (M6X12) STRIP GD PL	23	
-	1	1	1338708-1	SPACER, SLUG BLADE	22	
-	1	1	1-240641-6	SPACER, SLUG BLADE	21	
-	1	1	238009-4	SPACER, BLOCK CRIMPER	20	
-	1	2	1-456134-8	CRIMPER, INSULATION	19	
-	1	2	1-456403-0	CRIMPER, WIRE	18	
-	1	1	240644-1	PLATE, REAR SHEAR	17	
-	1	1	690482-4	PLATE, FRONT SHEAR	16	
1	2	1	1-1333214-3	ANVIL	15	
-	1	1	690474-4	BLADE, SLUG	14	
-	1	1	1-240641-6	SPACER, SLUG BLADE	13	
-	1	1	238009-4	SPACER, BLOCK CRIMPER	12	
1	2	1	6-456134-8	CRIMPER, INSULATION	11	
1	2	1	1-456403-0	CRIMPER, WIRE	10	
-	77	-71	-1	PART NO	DESCRIPTION	ITEM NO

DIMENSIONS: mm (INCHES)				MATL	HT TR	FIN
DO NOT SCALE PRINT.						
TOLERANCES UNLESS OTHERWISE SPECIFIED:						
1	PLC DEC ±	10DEC04	APP	10DEC04	F.BACKHURST	
2	PLC DEC ±	REL	03FEB05	L.LOFTHOUSE		
3	PLC DEC ±					
ANGLES ±						
SURF TEXTURE:						
REMOVE BURRS, BREAK SHARP EDGES R0.38 MAX						
SCALE				DWG NO		1339761
SHEET 1 OF 1				MACHINE REF		HD-I APPL
REV				REV		A