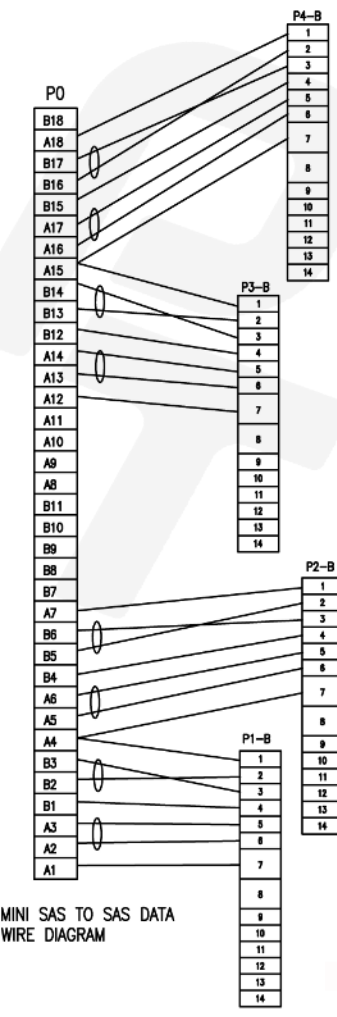
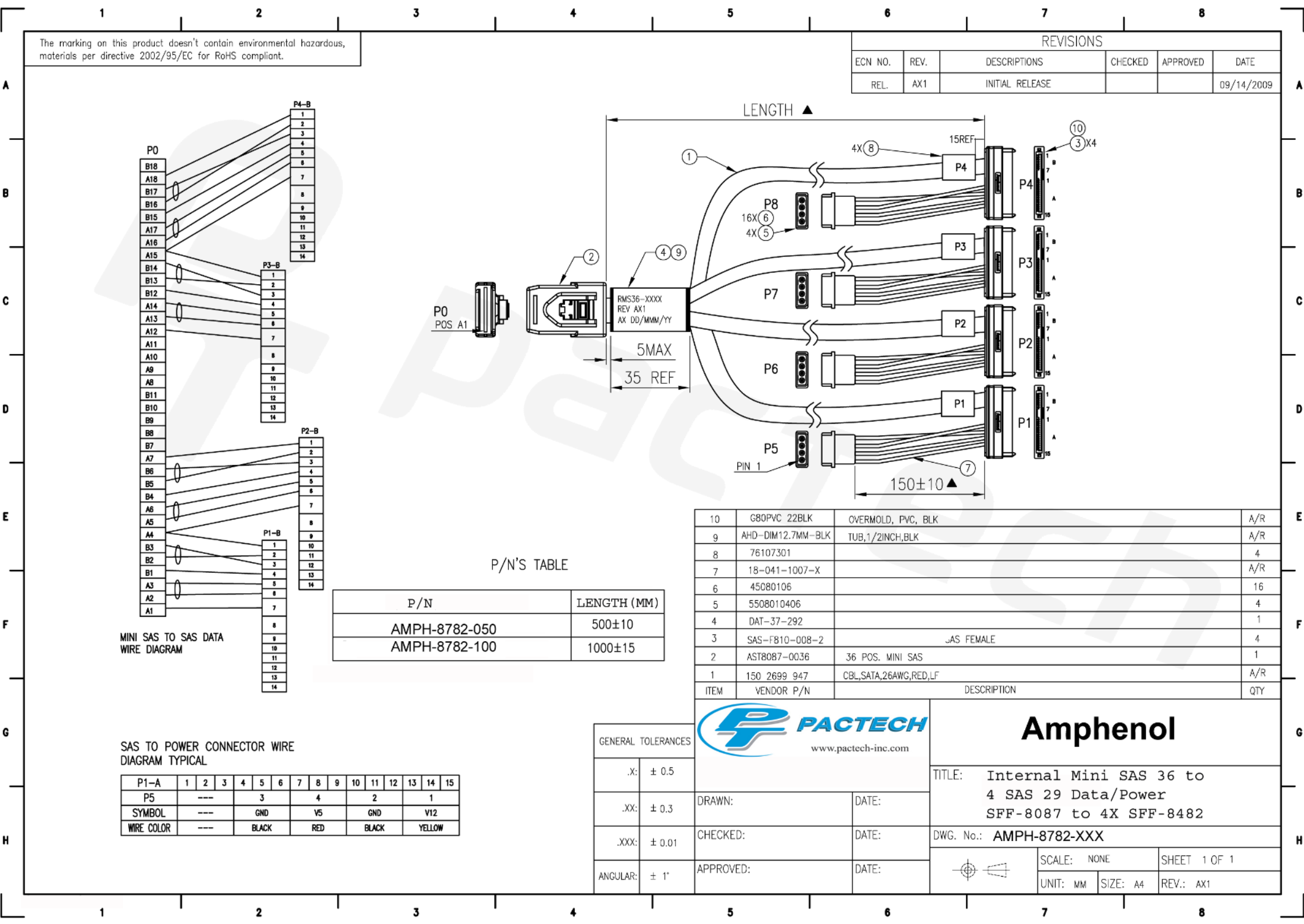


The marking on this product doesn't contain environmental hazardous, materials per directive 2002/95/EC for RoHS compliant.

REVISIONS					
ECN NO.	REV.	DESCRIPTIONS	CHECKED	APPROVED	DATE
REL.	AX1	INITIAL RELEASE			09/14/2009



P/N'S TABLE

P/N	LENGTH (MM)
AMPH-8782-050	500±10
AMPH-8782-100	1000±15

10	G80PVC 22BLK	OVERMOLD, PVC, BLK	A/R
9	AHD-DIM12.7MM-BLK	TUB,1/2INCH,BLK	A/R
8	76107301		4
7	18-041-1007-X		A/R
6	45080106		16
5	5508010406		4
4	DAT-37-292		1
3	SAS-FB10-008-2	JAS FEMALE	4
2	AST8087-0036	36 POS. MINI SAS	1
1	150 2699 947	CBL,SATA,26AWG,RED,LF	A/R
ITEM	VENDOR P/N	DESCRIPTION	QTY

SAS TO POWER CONNECTOR WIRE DIAGRAM TYPICAL

P1-A	1	2	3	4	5	6	7	8	9	10	11	12	13	14	15
P5	---	---	---	---	3	---	---	4	---	---	2	---	---	---	1
SYMBOL	---	---	---	---	GND	---	---	V5	---	---	GND	---	---	---	V12
WIRE COLOR	---	---	---	---	BLACK	---	---	RED	---	---	BLACK	---	---	---	YELLOW

GENERAL TOLERANCES

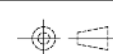
.X:	± 0.5
.XX:	± 0.3
.XXX:	± 0.01
ANGULAR:	± 1°



Amphenol

TITLE: Internal Mini SAS 36 to 4 SAS 29 Data/Power SFF-8087 to 4X SFF-8482

DWG. No.: AMPH-8782-XXX



SCALE: NONE

SHEET 1 OF 1

UNIT: MM

SIZE: A4

REV.: AX1