

DO NOT SCALE FROM THIS PRINT

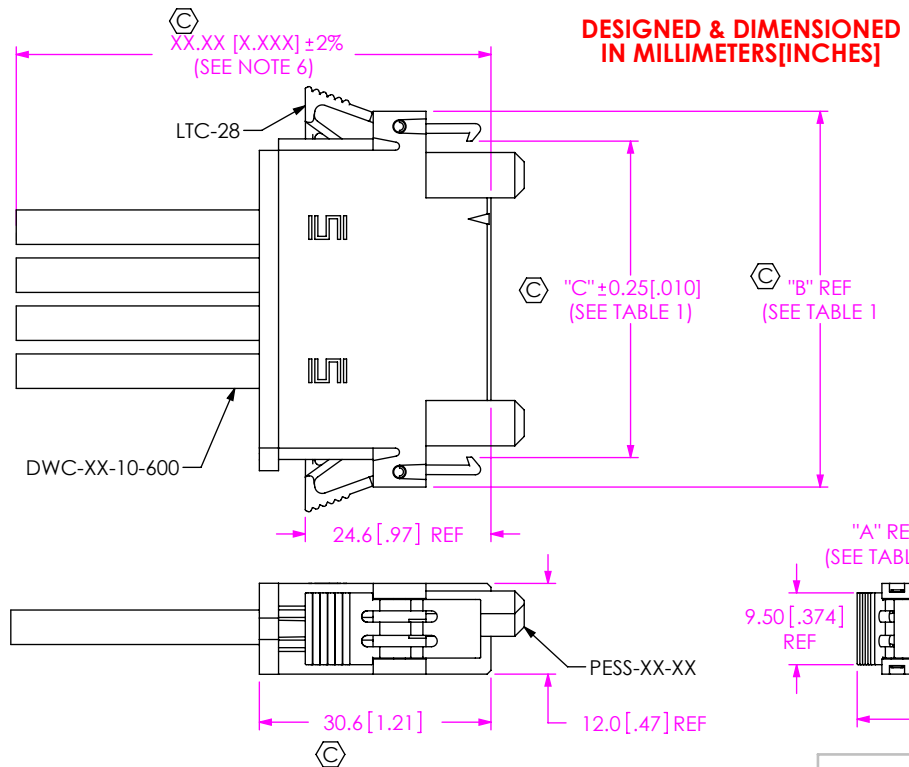


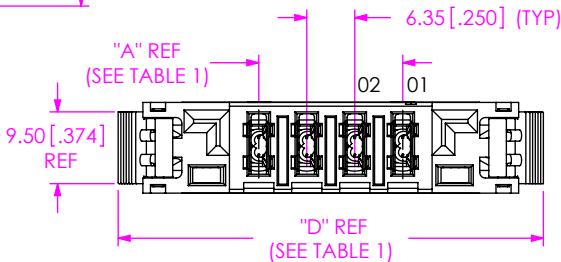
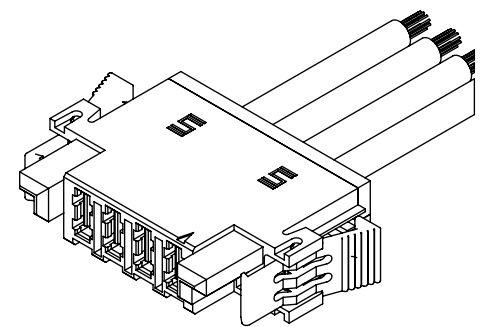
FIG 1  
(PESS-04-XX-X-XX.XX-SR SHOWN)

No. OF POS	"A"	"B"	"C"	"D"
-02	6.35 [0.250]	37.01 [1.457]	29.21 [1.150]	43.9 [1.73]
-04	19.05 [0.750]	49.71 [1.957]	41.91 [1.650]	56.6 [2.23]
-06	31.75 [1.250]	62.41 [2.457]	54.61 [2.150]	69.3 [2.73]
-08	44.45 [1.750]	75.11 [2.957]	67.31 [2.650]	82.0 [3.23]

- NOTES:
- ① REPRESENTS A CRITICAL DIMENSION.
  - ALL ASSEMBLIES TO BE 100% HI-POT TESTED AT 1000V AND ELECTRICALLY TESTED FOR SHORTS AND OPENS. AFTER FINAL ELECTRICAL TEST, MARK EACH ASSEMBLY PER INSTRUCTIONS REFERENCED IN CO-{AD-ID}-WI-3092-M.
  - MINIMUM LATCH RETENTION: 4.4 N [1 LB].
  - MINIMUM PULL OUT FORCE 22.2N [5 LB].
  - PACKAGE USING WRAPPED END METHOD AS SHOWN IN THE PACKAGING MANUAL.
  - ALL DIMS SHOWN IN METRIC EXCEPT FOR ASSEMBLY LENGTH ON PART CALL OUT.
  - NOTE DELETED.
  - CAP RETENTION: 4.4 N [1LB].
  - REFER TO CRIMP SPECIFICATIONS PRINT FOR CRIMP AND STRIP DIMENSIONS, TOLERANCES, TOOLING AND ITS REQUIREMENTS.
  - CUT LENGTH IS ASSEMBLY LENGTH MINUS OVERALL LENGTH SUBTRACTOR.

PESS-XX-XX-X-XX.XX-XX-XXX

- No OF POSITIONS  
 -02: 2 POSITIONS  
 -04: 4 POSITIONS  
 -06: 6 POSITIONS  
 -08: 8 POSITIONS
- LEAD STYLE  
 -10: 10 AWG 600 V (C-310-1012-X)  
 -12: 12 AWG 600 V (C-310-1012-X)
- PLATING SPECIFICATION  
 -L: LIGHT SELECTIVE, 10Au / 50 Ni MIN ON CONTACT, MATTE TIN CRIMP  
 -S: SELECTIVE, 30Au / 50 Ni MIN ON CONTACT, MATTE TIN CRIMP  
 -T: MATTE TIN, 200 TIN / 50 Ni MIN ON CONTACT, MATTE TIN CRIMP
- SECOND END OPTION (ONLY AVAILABLE WITH -DR OPTION)  
 -NUS: NOTCH UP STRAIGHT (SEE FIG 2, SHEET 2)  
 -NDS: NOTCH DOWN STRAIGHT (SEE FIG 3, SHEET 2)
- END OPTION  
 -SR: SINGLE ENDED  
 -DR: DOUBLE ENDED
- ASSEMBLY LENGTH  
 06.00[152.4] MINIMUM LENGTH (SEE NOTE 6)



SERIES	"E"	"F"
PESS	0.623	1.246

OVERALL LENGTH "E" (SEE TABLE 2)

OVERALL LENGTH "F" (SEE TABLE 2)

-S: SINGLE END      -D: DOUBLE END

FIG 4  
CABLE CUT IN-PROCESS

UNLESS OTHERWISE SPECIFIED, DIMENSIONS ARE IN MILLIMETERS.

TOLERANCES ARE:  
 DECIMALS      ANGLES  
 X.X: ±0.3 [.01]      2°  
 X.XX: ±0.13 [.005]  
 X.XXX: ±0.051 [.0020]

PROPRIETARY NOTE  
 THIS DOCUMENT CONTAINS CONFIDENTIAL AND PROPRIETARY INFORMATION AND ALL DESIGN, MANUFACTURING, REPRODUCTION, USE, PATENT RIGHTS AND SALES RIGHTS ARE EXPRESSLY RESERVED BY SAMTEC, INC. THIS DOCUMENT SHALL NOT BE DISCLOSED, IN WHOLE OR PART, TO ANY UNAUTHORIZED PERSON OR ENTITY NOR REPRODUCED, TRANSFERRED OR INCORPORATED IN ANY OTHER PROJECT IN ANY MANNER WITHOUT THE EXPRESS WRITTEN CONSENT OF SAMTEC, INC.

MATERIAL: DO NOT SCALE DRAWING SHEET SCALE: 2:1  
 INSULATOR: NYLON, BLACK  
 CONTACT: COPPER ALLOY  
 LATCH: NYLON, BLACK  
 WIRE: PVC COATED TINNED COPPER

**samtec**  
 520 PARK EAST BLVD., NEW ALBANY, IN 47150  
 PHONE: 812-944-6733 FAX: 812-948-5047  
 e-Mail: info@SAMTEC.com code 53322

DESCRIPTION: PESS CABLE ASSEMBLY

DWG. NO. PESS-XX-XX-X-XX.XX-XX-XXX

BY: E WRIGHT 02/16/2010 SHEET 1 OF 2

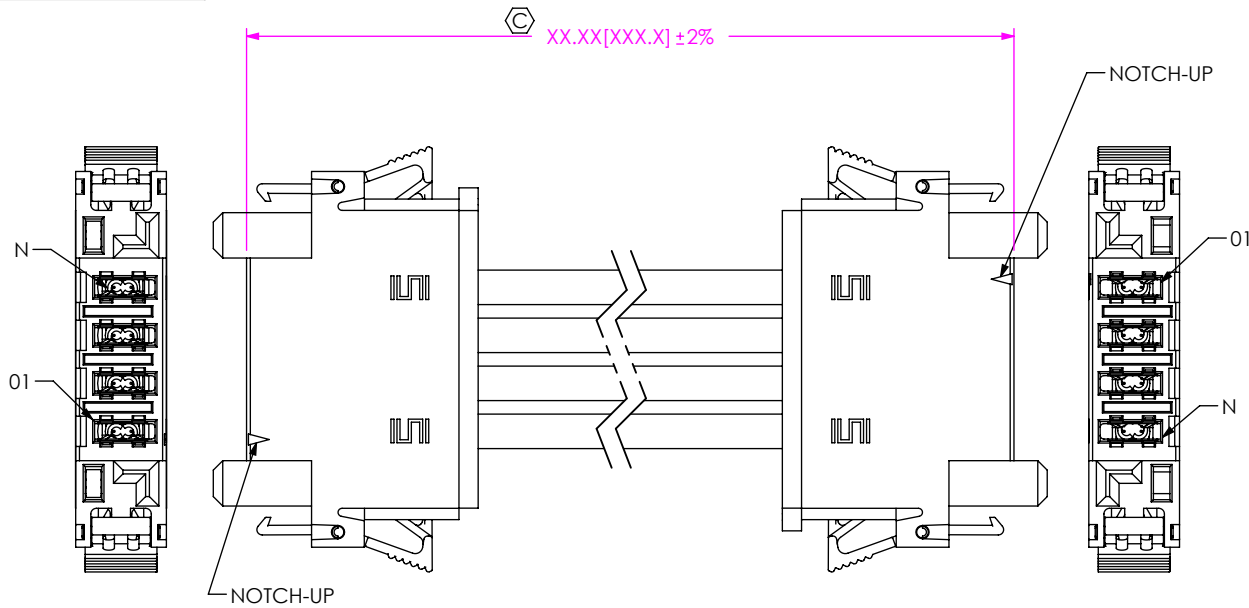


FIG 2  
(PESS-04-XX-X-XX.XX-DR-NUS)  
(SAME AS FIG 1, DIFFERENT AS SHOWN)

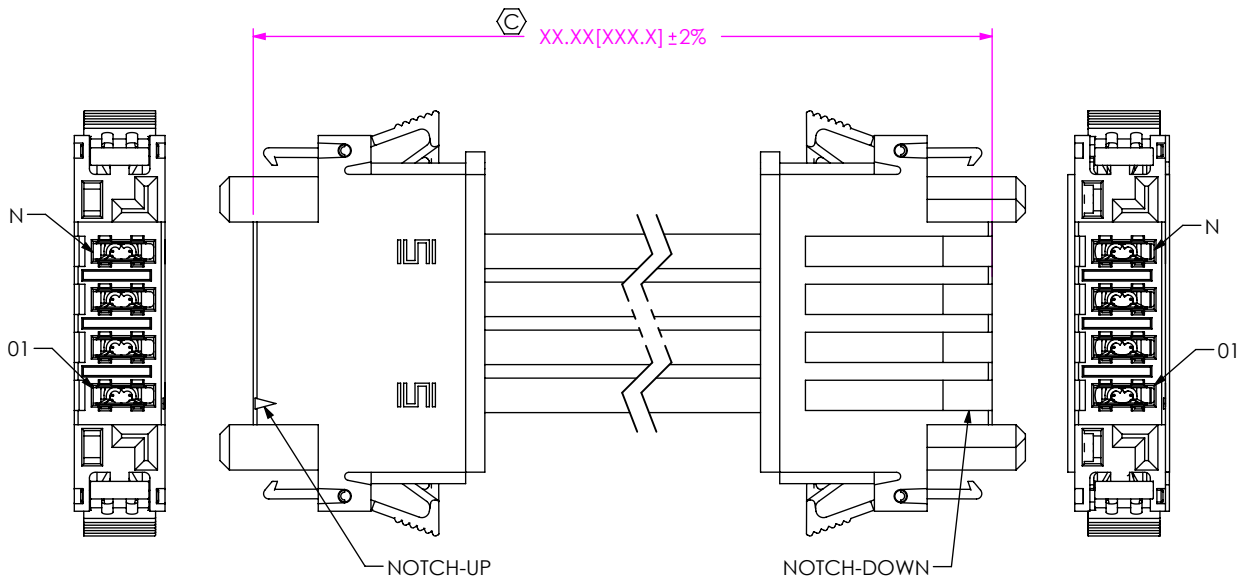
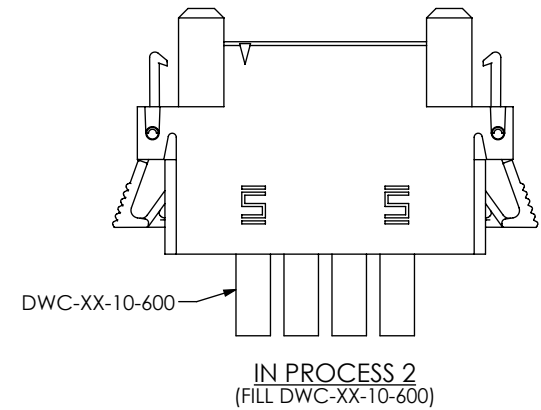
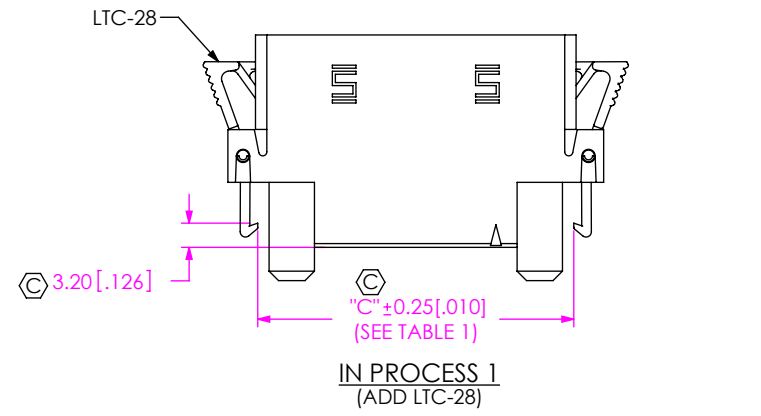
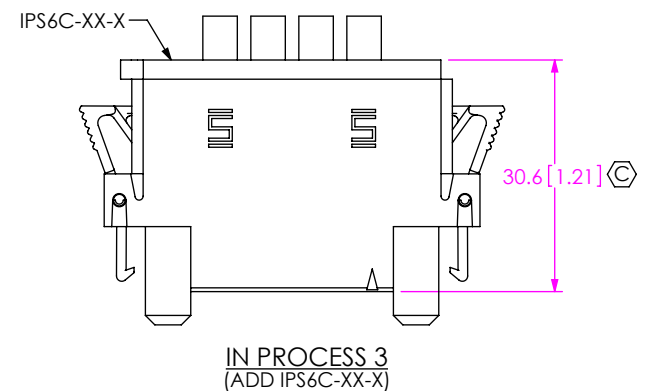


FIG 3  
(PESS-04-XX-X-XX.XX-DR-NDS)  
(SAME AS FIG 1, DIFFERENT AS SHOWN)



**PROPRIETARY NOTE**  
THIS DOCUMENT CONTAINS CONFIDENTIAL AND PROPRIETARY INFORMATION AND ALL DESIGN, MANUFACTURING, REPRODUCTION, USE, PATENT RIGHTS AND SALES RIGHTS ARE EXPRESSLY RESERVED BY SAMTEC, INC. THIS DOCUMENT SHALL NOT BE DISCLOSED, IN WHOLE OR PART, TO ANY UNAUTHORIZED PERSON OR ENTITY NOR REPRODUCED, TRANSFERRED OR INCORPORATED IN ANY OTHER PROJECT IN ANY MANNER WITHOUT THE EXPRESS WRITTEN CONSENT OF SAMTEC, INC.



520 PARK EAST BLVD, NEW ALBANY, IN 47150  
PHONE: 812-944-6733 FAX: 812-948-5047  
e-Mail info@SAMTEC.com code 55322

DO NOT SCALE DRAWING

SHEET SCALE: 2:1

DESCRIPTION: PESS CABLE ASSEMBLY

DWG. NO. PESS-XX-XX-X-XX.XX-XX-XXX

BY: E WRIGHT 02/16/2010 SHEET 2 OF 2