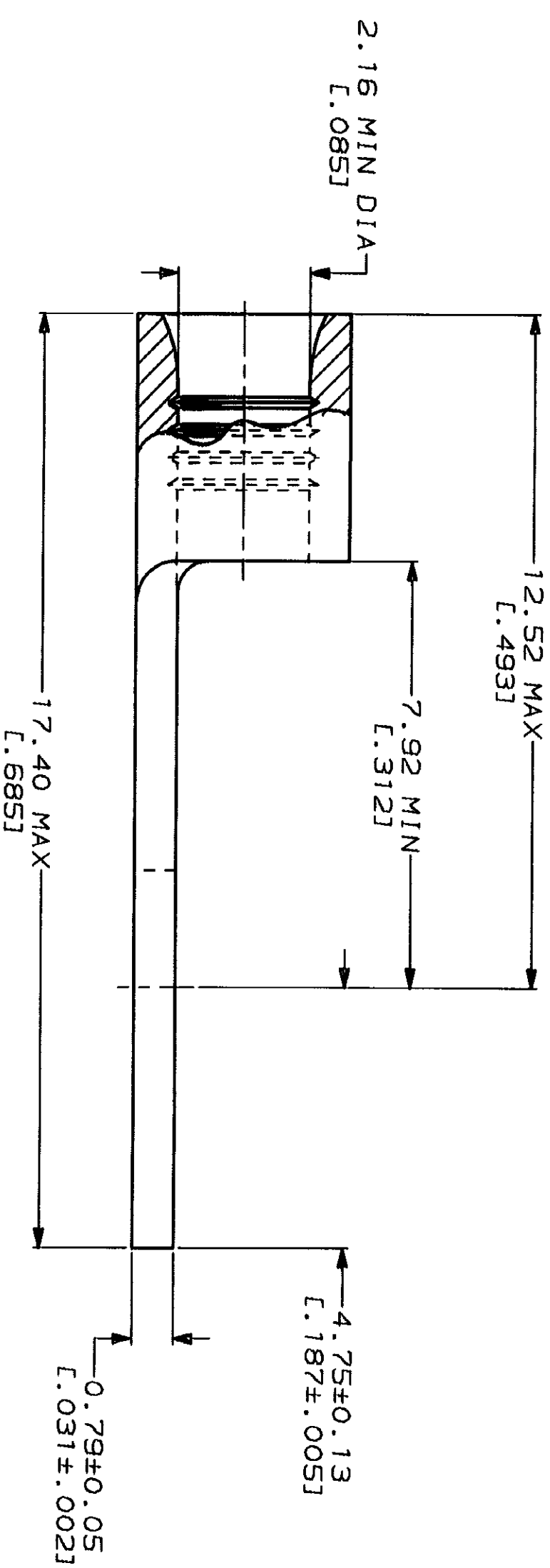


METRIC
DIMENSIONS LISTED IN mm [INCHES]

AMP WIRE RANGE	UL E13288 Listed
16-14 AWG SOLID OR STRANDED	16-14 AWG SOLID OR STRANDED P/N 34128 & 8-34128-1 & 8-34128-5 ONLY

LR7189 Certified	MILITARY P/N AND CLASS
16-14 AWG SOLID OR STRANDED P/N 34128 & 8-34128-1 & 8-34128-5 ONLY	NOT APPLICABLE

△ STAMP AMP 16-14* APPROX AS SHOWN



50	LOOSE PIECE BAG 34128	170°C	TIN PLATE 0.00254L.000100] MIN THK PER MIL-T-10727	8-34128-5
100	LOOSE PIECE BOX 34128	170°C	TIN PLATE 0.00254L.000100] MIN THK PER MIL-T-10727	8-34128-1
---	LOOSE PIECE	343°C	NICKEL PLATE 0.000762L.000030] MIN THK PER QQ-N-290	34128-1
---	LOOSE PIECE	170°C	TIN PLATE 0.00254L.000100] MIN THK PER MIL-T-10727	34128

AMP INCORPORATED
CUSTOMER SERVICE SYSTEMS

FOR ADDITIONAL PRODUCT INFORMATION OR COPIES OF DRAWINGS AND TECHNICAL DOCUMENTS: PRODUCT INFORMATION CENTER 1-800-522-6752

FOR APPLICATION TOOLING INFORMATION: TOOLING ASSISTANCE CENTER 1-800-722-1111

FOR ORDER ENTRY: 1-800-526-5142

MAX RECOMMENDED OPERATING TEMPERATURE: SEE TABLE

VOLTAGE RATING: NOT APPLICABLE

WIRE CROSS SECTIONAL AREA RANGE: 1.04-2.62mm² [2.050-5.180] CIR MILS SOLID OR STRANDED

THIS DRAWING IS A CONTROLLED DOCUMENT FOR AMP INCORPORATED. ANY REVISIONS TO THIS DRAWING SHOULD BE CONTACTED FOR THE LATEST REVISION.

DO NOT SCALE PRINT. DIMENSIONS IN mm [INCHES] TOLERANCES ON: 1 PLG DEC ± 2 PLG DEC ± 3 PLG DEC ± ANGLES MATERIAL COPPER PER ASTM B-152 ANNEALED FINISH SEE TABLE	DR TA BRINKMAN 3-26-93	MAX OPERATING TEMPERATURE	FINISH	PART NO
CHK DA PATERSON 3-26-93	APPD DE MILLER 3-26-93		AMP Incorporated Harrisburg, PA 17105-3608	
APPD JL MECKLEY 3-26-93	PRODUCT SPEC		TERMINAL, SPADE TONGUE, SOLI STRAND™	
APPLICATION SPEC	WEIGHT		SIZE CAGE CODE 00779 DRAWING NO G=34128	
			SCALE 10:1 SHEET 1 OF 1	