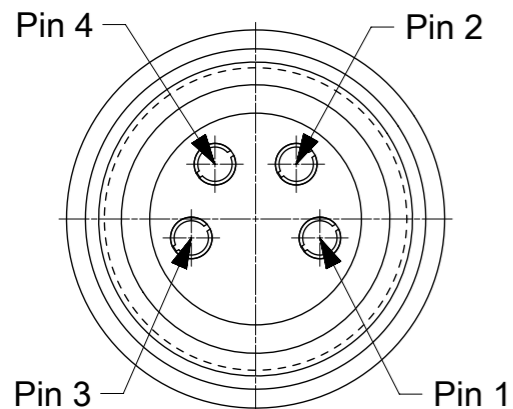
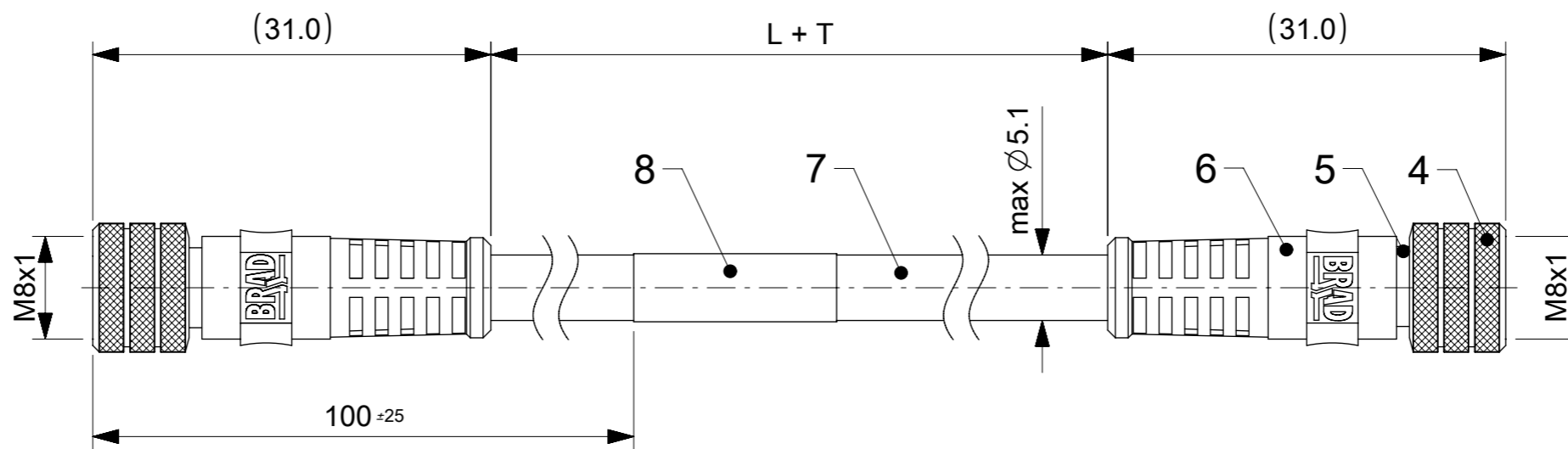


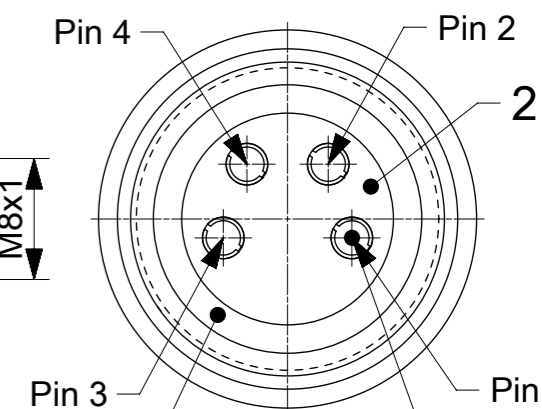
FEMALE CONNECTOR
PIN ASSIGNMENT
FRONT VIEW



SCALE 5:1

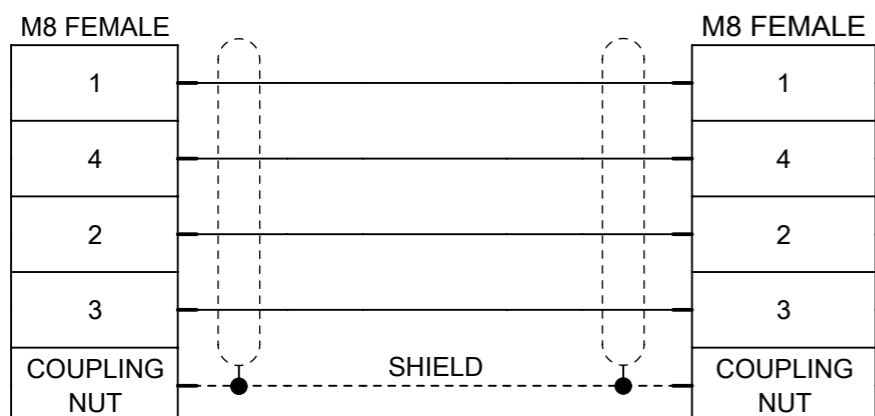


FEMALE CONNECTOR
PIN ASSIGNMENT
FRONT VIEW



SCALE 5:1

WIRING DIAGRAM



TWISTING:

4 CORES ARE TWISTED TO A STARQUAD:
PAIR 1: PIN 1/PIN 4
PAIR 2: PIN 2/PIN 3

FOR OPTIONS SEE - NUMERICAL CODE - ON SHEET 2

ITEM	QTY	DESCRIPTION	MATERIAL	FINISH
8	1	LABEL	VINYL	-
7	L + T	CABLE 1x4xAWG26 GREEN	PUR	-
6	2	OVERMOULD BLACK	TPU	-
5	2	SLEEVE SHLD	BRASS	Ni
4	2	COUPLING NUT M8 FEMALE	BRASS	Ni
3	2	ORING RED	FKM	-
2	2	INSERT M8 FEMALE 4P BLACK	PA	-
1	8	CONTACT M8 FEMALE	BRASS	Selective Au over Ni

NOTES

1. RATED VOLTAGE: 30 V AC/DC
2. RATED CURRENT: 3 A
3. OPERATION TEMPERATURE: -20°C TO +80°C
4. INTERNATIONAL PROTECTION MARKING: IP67
5. CATEGORY: BASED ON CAT5
6. PACKAGING: 24 PIECES PER CARTON, WITHOUT PLASTIC BAG.

<p>QUALITY SYMBOLS</p> <p>FA = 0</p> <p>FE = 0</p> <p>FP = 0</p> <p>FV = 0</p> <p>FC = 0</p> <p>FX = 0</p> <p>FS = 0</p> <p>FT = 0</p>	<p>THIS DRAWING CONTAINS INFORMATION THAT IS PROPRIETARY TO MOLEX ELECTRONIC TECHNOLOGIES, LLC AND SHOULD NOT BE USED WITHOUT WRITTEN PERMISSION</p>		<p>DIMENSION UNITS: mm</p> <p>SCALE: 2:1</p>				
	<p>GENERAL TOLERANCES (UNLESS SPECIFIED)</p> <p>ANGULAR TOL ± 1.0 °</p>		<p>DRWN BY: JMARSZALEK</p> <p>DATE: 2016/04/26</p>			<p>CSE M8 M8 4P AC FE STR PUR FE STR XM</p>	
	<p>4 PLACES ±</p> <p>3 PLACES ±</p> <p>2 PLACES ± 0.05</p> <p>1 PLACE ± 0.3</p> <p>0 PLACES ± 0.5</p>		<p>CHK'D BY: RSILLER</p> <p>DATE: 2016/06/09</p>				<p>PRODUCT CUSTOMER DRAWING</p>
	<p>DRAFT WHERE APPLICABLE MUST REMAIN WITHIN DIMENSIONS</p>		<p>APPR BY: RSILLER</p> <p>DATE: 2016/06/09</p>				
<p>EC NO: 105621</p> <p>DRWN: JMARSZALEK</p> <p>CHK'D: RSILLER</p> <p>REV APPR: RSILLER</p>		<p>DRAWING SIZE: A3</p> <p>THIRD ANGLE PROJECTION</p>		<p>DOCUMENT NUMBER: 1203595000</p> <p>DOC TYPE: PSD</p> <p>DOC PART: 000</p> <p>SHEET NUMBER: 1 OF 2</p>			

