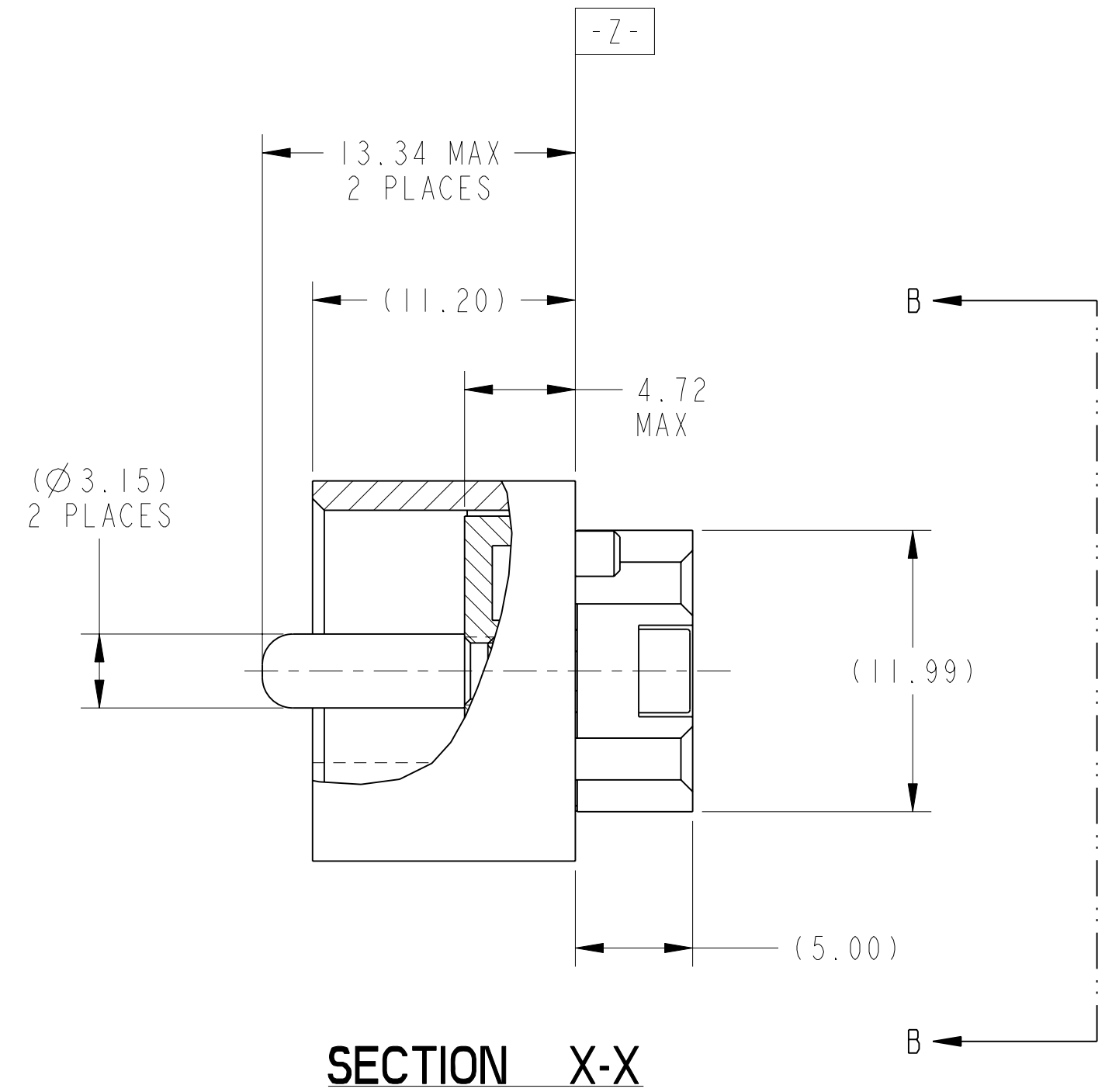
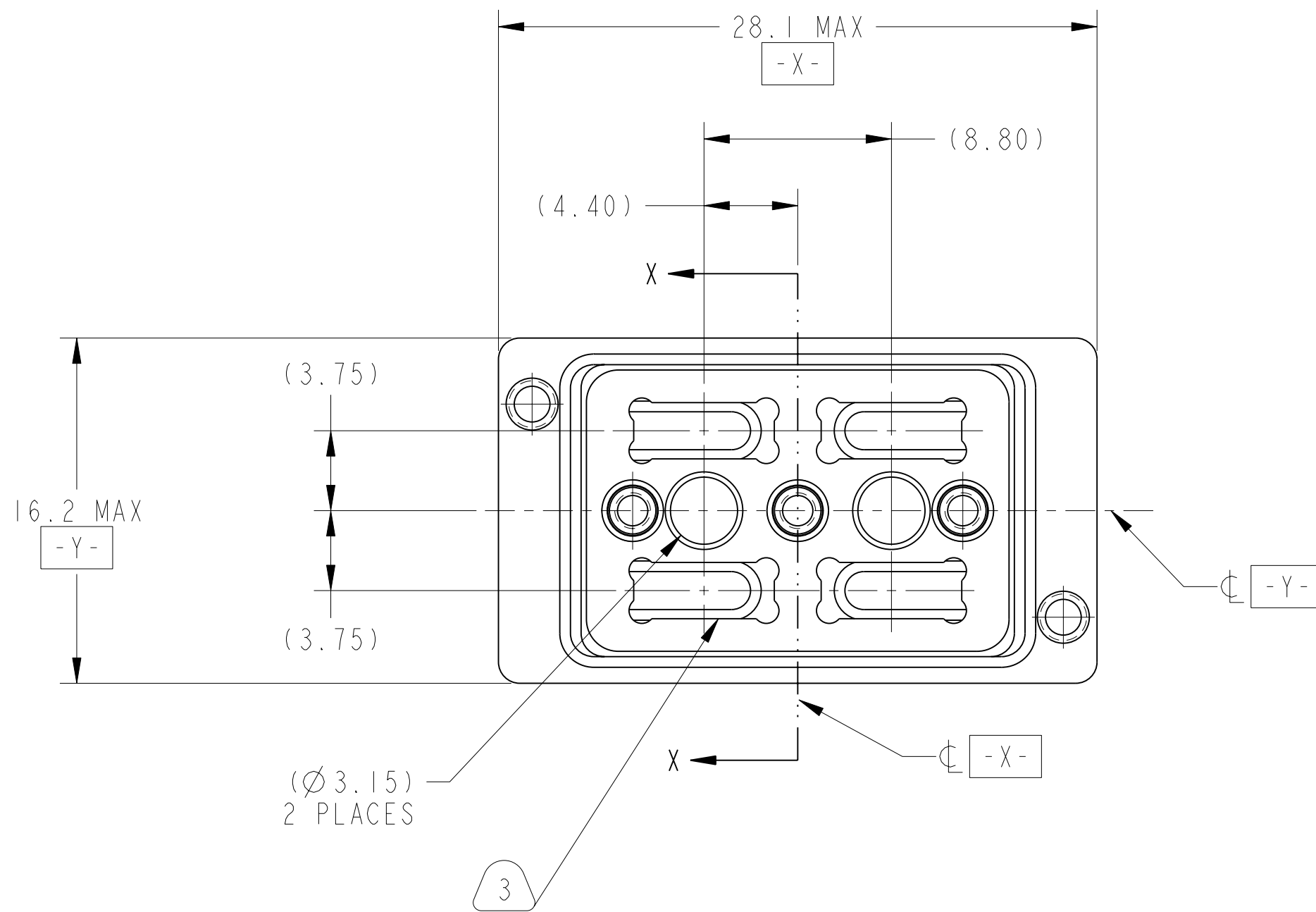
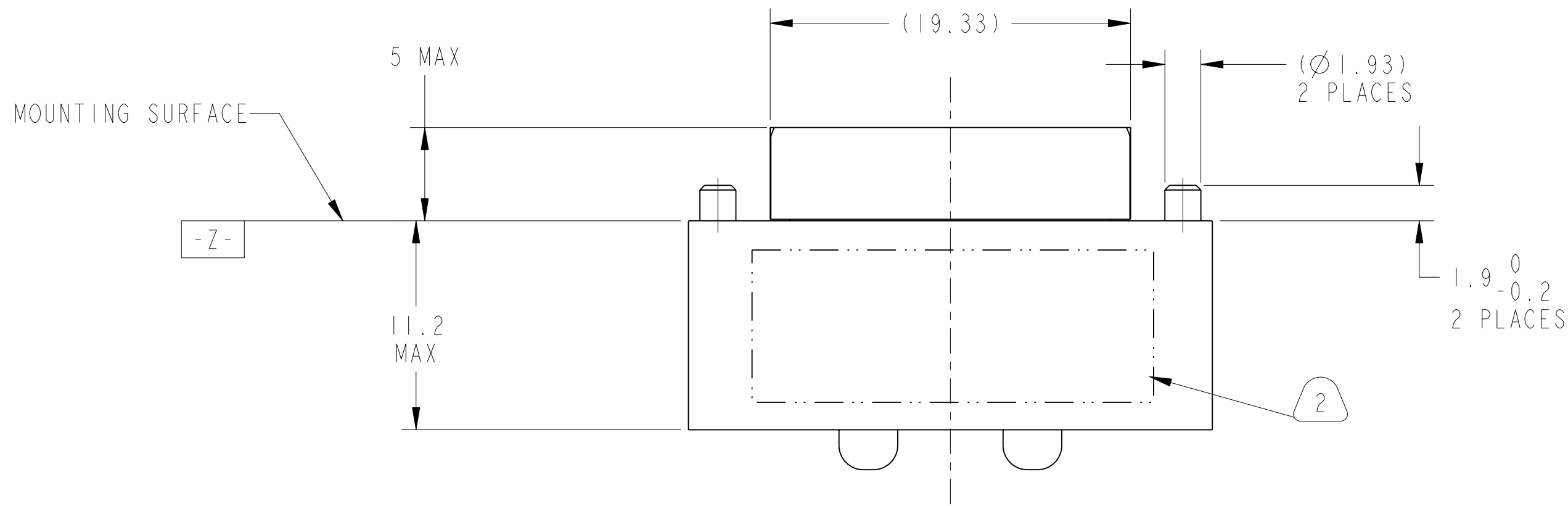


REV. PA1	SHEET 1 OF 3	DOCUMENT NO. 10-504639-008
M REVISIONS		
LTR	DESCRIPTION	DATE
PA1	INITIAL RELEASE	9/27/17



METRIC DRAWING

SEE SHEET 2

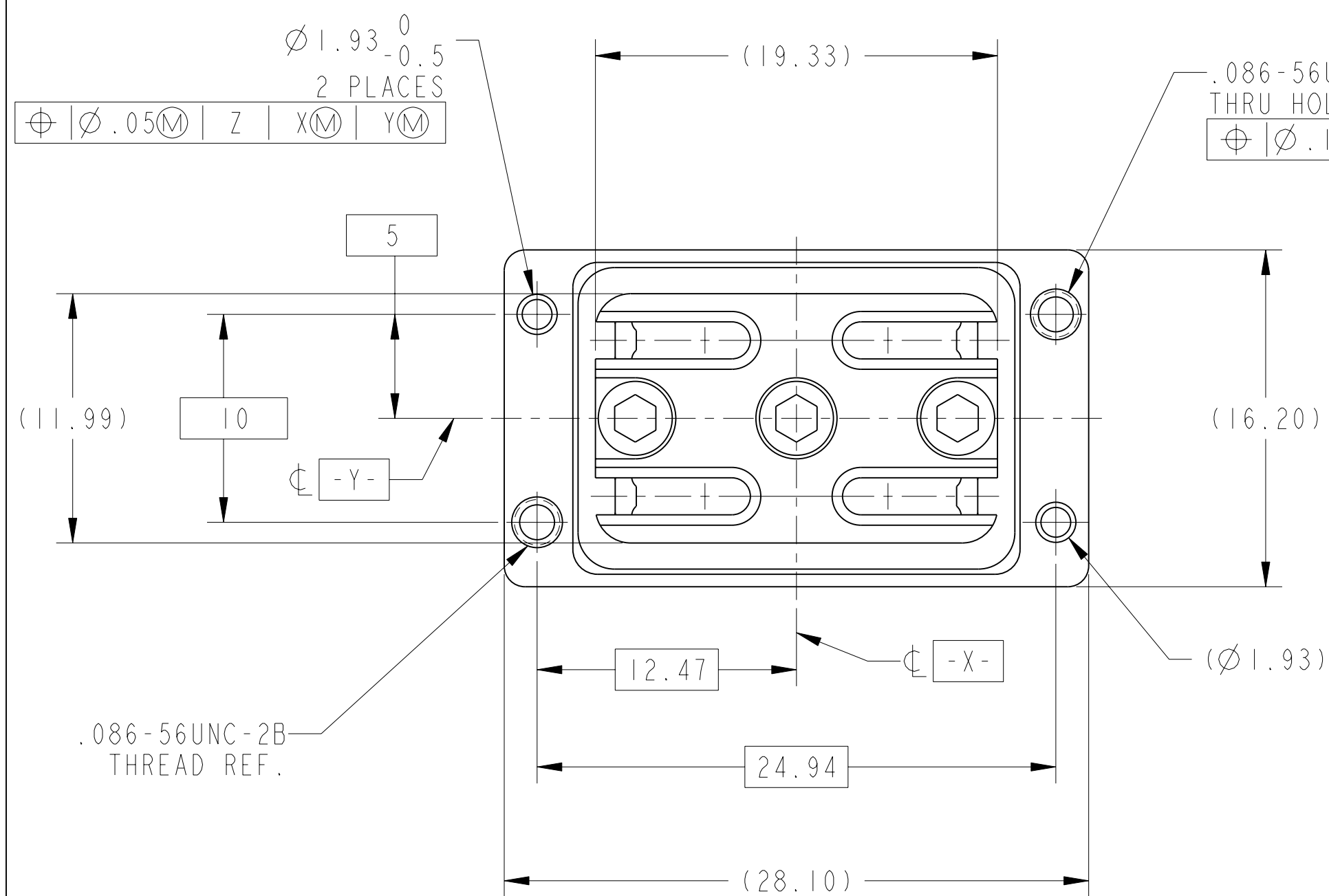
NOTES:

THE USE OF THIS DOCUMENT IS UNLIMITED. HOWEVER, DOCUMENTS REFERENCED HEREON MAY CONTAIN LIMITED RIGHTS DATA.

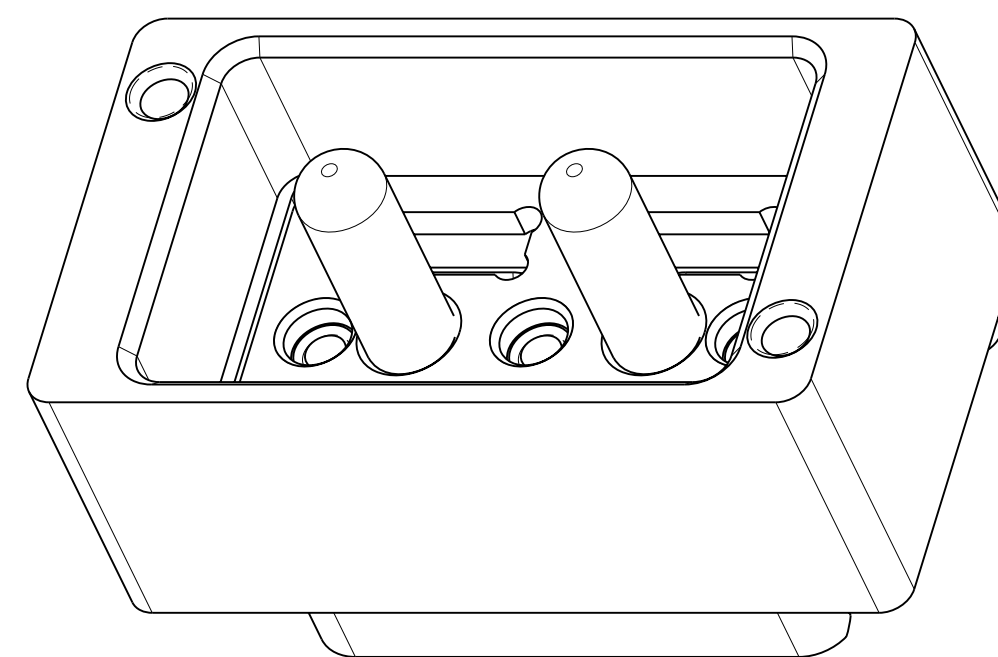
SCALE 4.000

N/A	PRO/ENGINEER INFORMATION
N/A	Pro/e Model Used: 10-504639-008.DWG.ASSEM
NEXT ASSEMBLY	Drawing Name: 10-504639-008

UNLESS OTHERWISE SPECIFIED LINEAR DIMENSIONS ARE IN MILLIMETERS TOLERANCES: .XXXX = ±NA ANGLES= ±2° .XXX = ±NA .XX = ±.13 .X = ±.25 DIM. & TOL. PER ASME Y14.5M; DRM PER MIL-DTL-31000; OTHER Amphenol Sids. PER 9-3800 LEGENDS: =FLAG NOTE CALL OUT REFERENCE ONLY	SPECIFICATIONS MATERIAL SPEC. NONE PROCESS SPEC. 9-3856-5 9-3895	POS	QTY	PART NUMBER	DESCRIPTION	NOTE
		PARTS LIST				
APPROVALS		DATE		AMPHENOL CORPORATION 40-60 DELAWARE AVENUE SIDNEY, N.Y. 13839		
PREPARED BY R. CHAPMAN		27-Sep-17		CONNECTOR, FIBER OPTIC, BACKPLANE, 4 MT SPECIAL (VITA 66.1 ENVELOPE)		
ENGINEER IN CHARGE E. HICKEY				SIZE C		
DESIGN MANAGER R. SELFRIDGE				CAGE CODE 77820		
DESIGN ACTIVITY GROUP BLP				DOCUMENT NO. 10-504639-008		
THIRD ANGLE PROJECTION				REV. PA1		
THIRD ANGLE PROJECTION				SCALE: 3.0 REF: 10-504639-002		
				SHEET 1 OF 3		

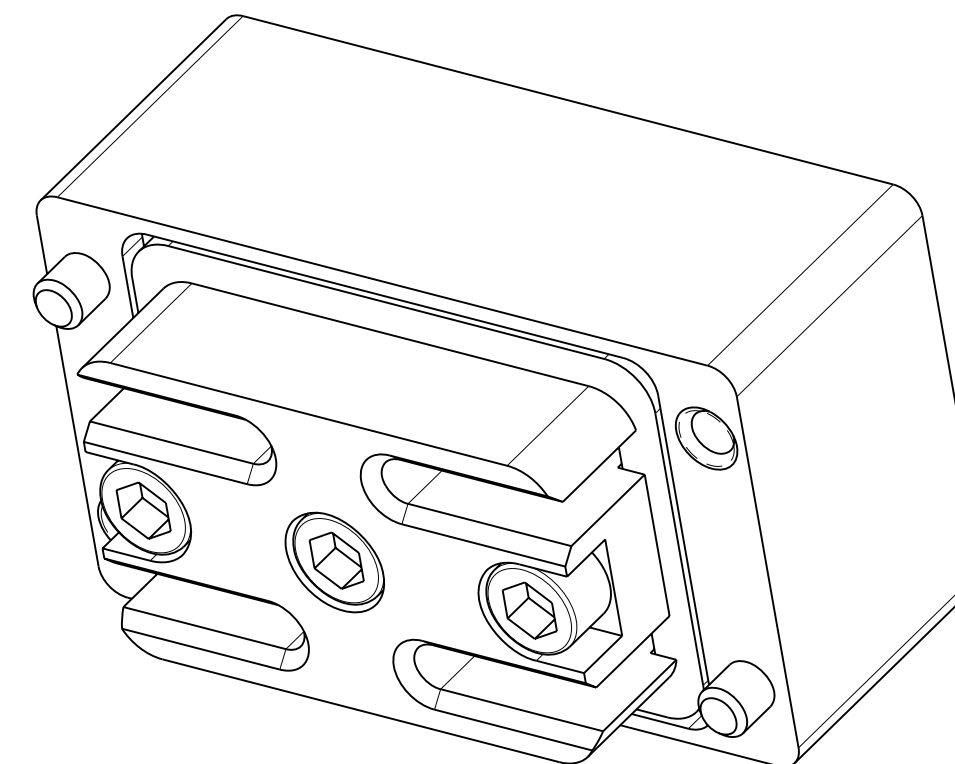


VIEW AT B



TOP ISO VIEW

SCALE 4.000



BOTTOM ISO

SCALE 4.000

7. FOR CONNECTOR INSTALLATION ILLUSTRATION SEE SHEET 3.
6. FOR MATING MODULE CONNECTOR ASSEMBLY, SEE DRAWING 10-504637-010.
5. TIGHTEN CAPTIVE SCREWS TO 10-14 IN-OZ AFTER INSTALLING MT FERRULE (NOT INCLUDED).
4. FIBER OPTIC INSERT IS DESIGNED FOR MT TYPE FERRULES TERMINATED TO NON-STRENGTH MEMBERED RIBBON CABLE.
3. INDICATED CAVITIES WILL ACCOMODATE A STANDARD 12 CHANNEL MT FERRULE PER IEC 61754-5 (SEE NOTE 4).
2. BLACK INK STAMP "AMPHENOL" PART NUMBER AND DATE CODE ON INDICATED SURFACE PER 9-3856-5. DATE CODE PER 9-3895. CHARACTERS TO BE 1.6±.51 (.062±.020) HIGH. ADDITIONAL INFORMATION MAY BE REQUESTED BY PURCHASE ORDER.
1. PARTS ARE SHIPPED UNASSEMBLED.

THE USE OF THIS DOCUMENT IS UNLIMITED. HOWEVER, DOCUMENTS REFERENCED HEREON MAY CONTAIN LIMITED RIGHTS DATA.

MATERIALS AND FINISHES

COMPONENT	MATERIAL/ FINISH
BACKPLANE SHELL	BODY - MATERIAL - ALUM. ALLOY PER AMS 4150 FINISH - CHROMATE TREATMENT PER MIL-C-5541, CL 3 HELICAL INSERTS - STAINLESS STEEL 304 SERIES PASSIVATED
INSERT ASSEMBLY	FRONT INSERT/RETAINER - MATERIAL - ALUM ALLOY PER AMS 4150 FINISH - CHROMATE TREATMENT PER MIL-C-5541, CL3 SCREW - STAINLESS STEEL 300 SERIES, PASSIVATED HELICAL INSERTS - STAINLESS STEEL 304 SERIES, PASSIVATED GUIDE PIN - STAINLESS STEEL PER AMS 5640. PASSIVATED

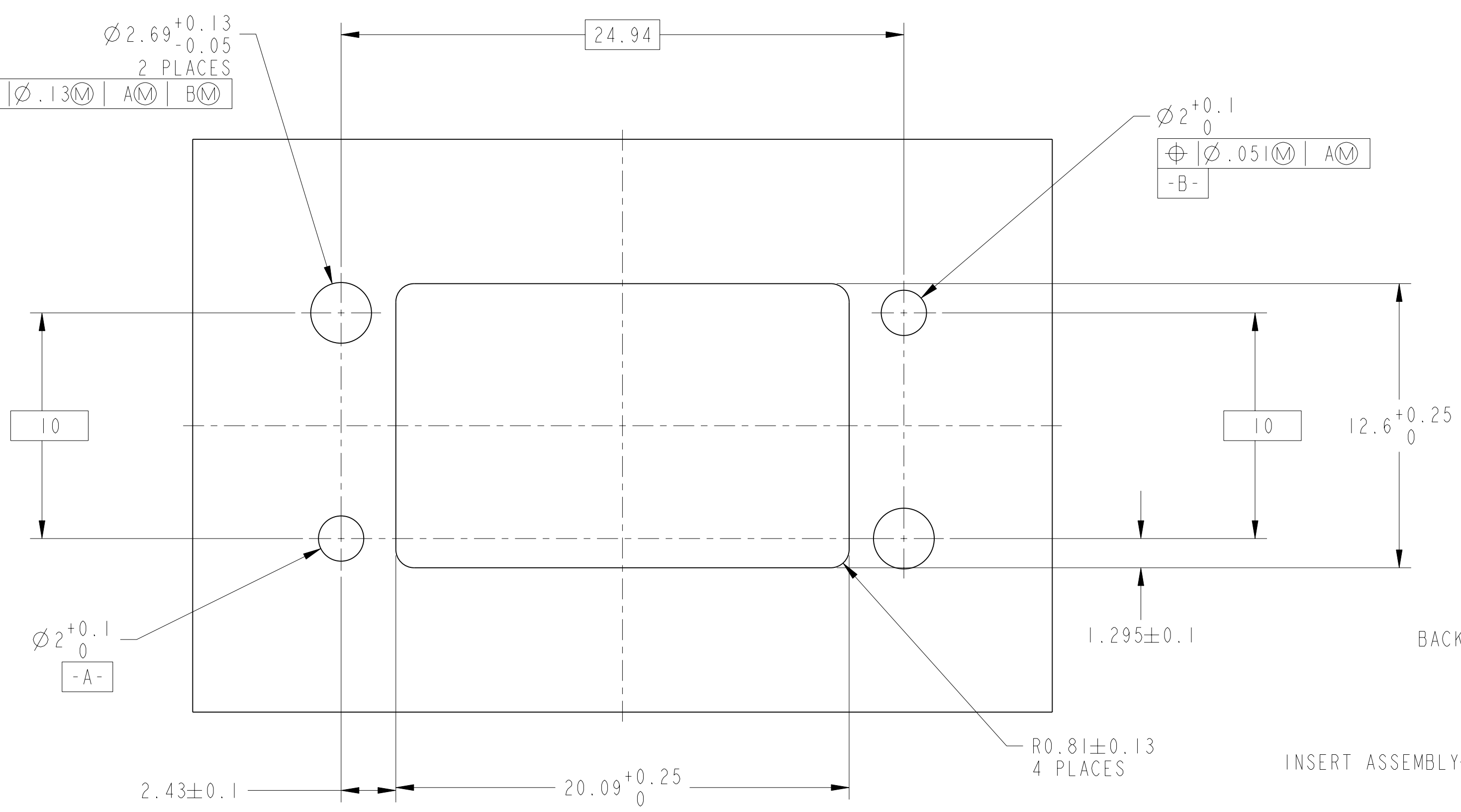
SIZE C	CAGE CODE 77820	DOCUMENT NO. 10-504639-008	REV. PA1
SCALE: 3.0	REF. 10-504639-002	SHEET 2 OF 3	

4

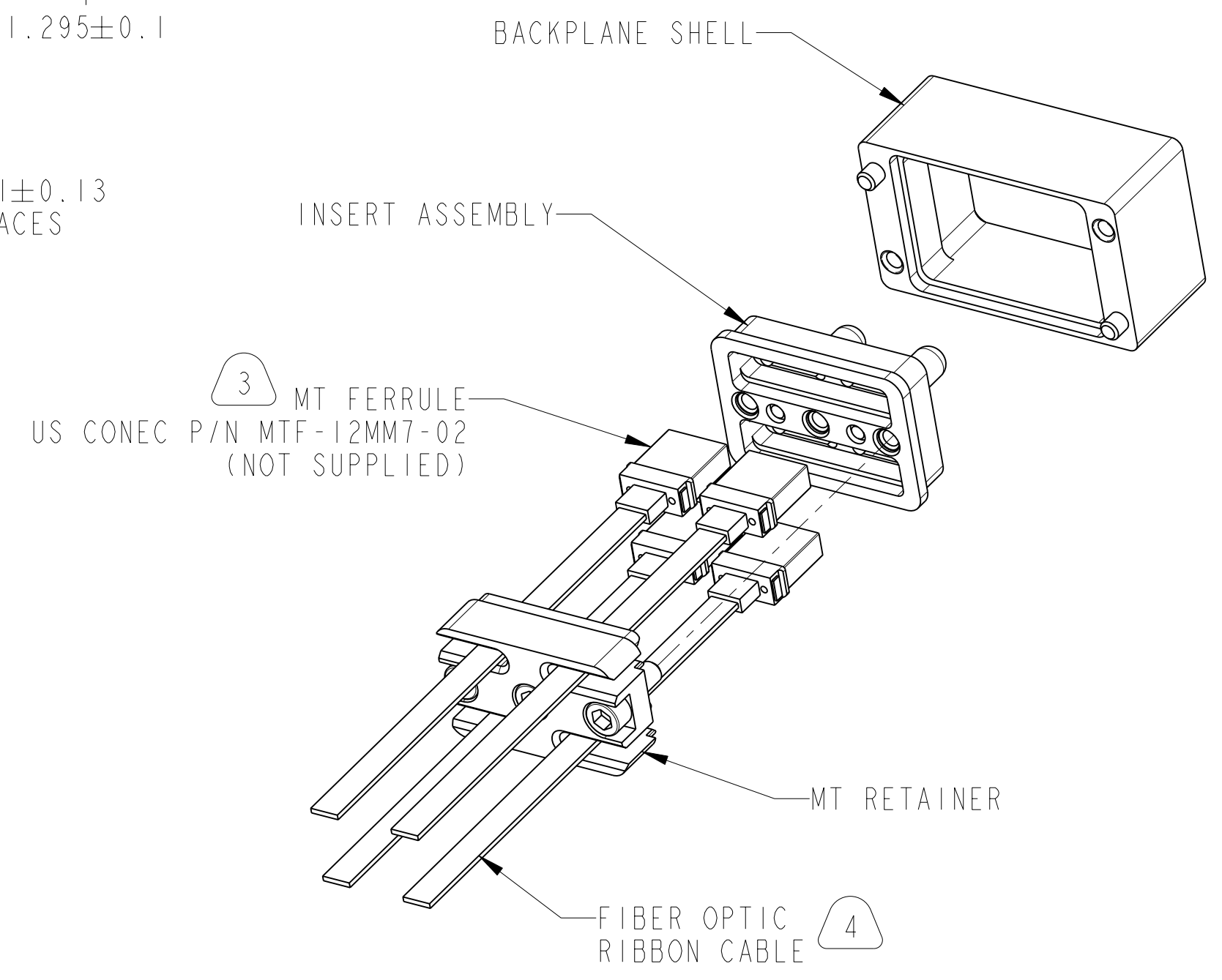
3

2

10-504639-008
SHEET 3 OF 3
REV. PA1



SUGGESTED BACKPLANE BOARD CUTOUT
(CONNECTOR SIDE SHOWN)
SCALE 6.000



REAR EXPLODED ASSEMBLY VIEW
SCALE 2.000

THE USE OF THIS DOCUMENT IS UNLIMITED. HOWEVER, DOCUMENTS REFERENCED HEREON MAY CONTAIN LIMITED RIGHTS DATA.

SIZE C	CAGE CODE 77820	DOCUMENT NO. 10-504639-008	REV. PA1
SCALE: 3.0	REF. 10-504639-002	SHEET 3 OF 3	

3

2

1

10-504639-008
SHEET 3 OF 3
REV. PA1