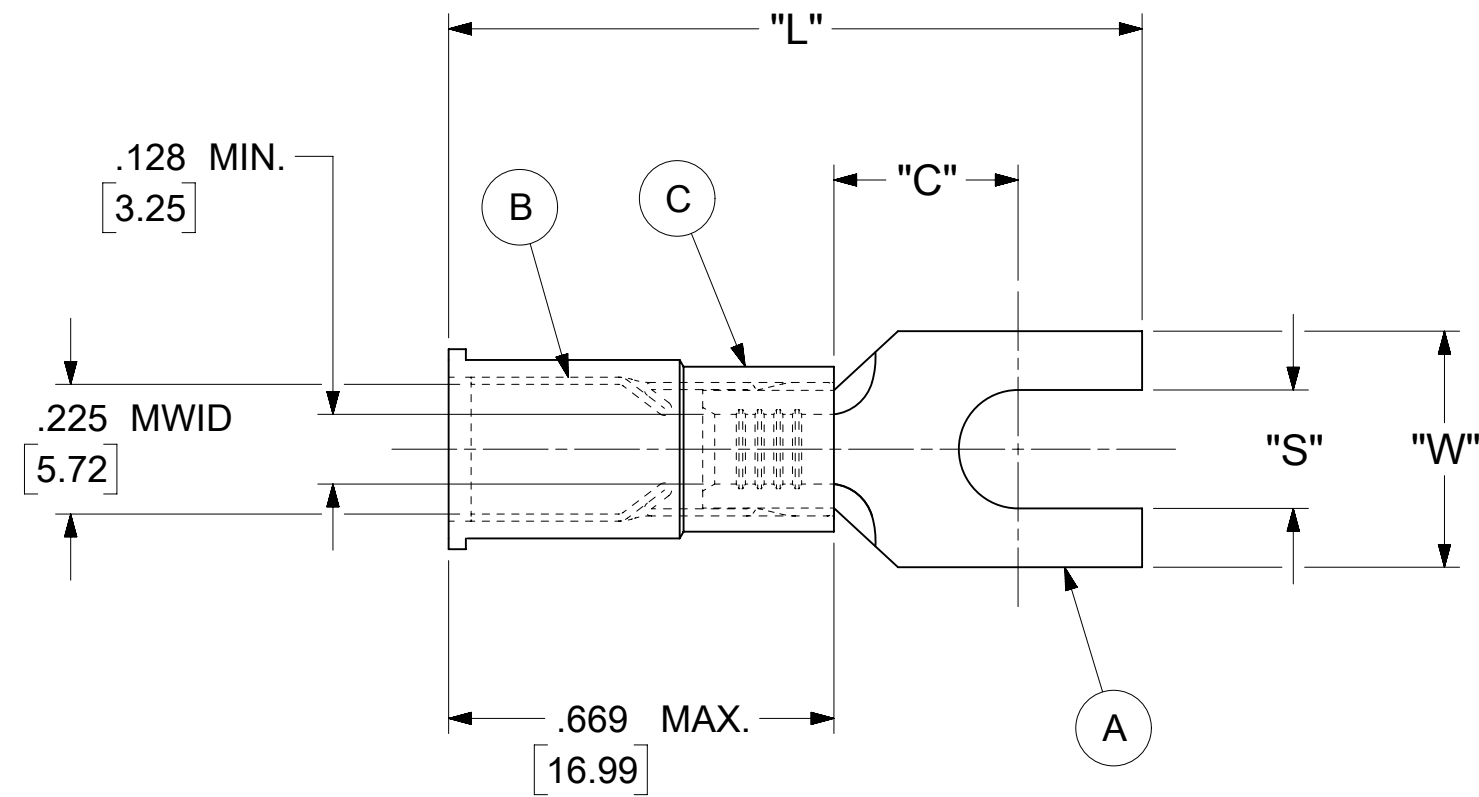


LOOSE PIECE		SPECIFICATIONS				
MATERIAL NUMBER	ENGINEERING NUMBER	STUD SIZE	"S" ±.005 [0.13]	"W" ±.010 [0.25]	"C" MIN.	"L" MAX.
191370038	C-5105-06	6	.146 [3.71]	.320 [8.13]	.305 [7.75]	1.204 [30.58]
191370040	C-5105-08	8	.173 [4.39]			
191370041	C-5105-10	10	.198 [5.03]			



NOTES:

- MATERIAL:
 - (A). TERMINAL: COPPER (STOCK THICKNESS .040±.001 [1.02])
PLATING: ELECTRO-TIN (.0003 MIN.)
 - (B). TIN-PLATED BRASS FUNNEL FERRULE
 - (C). INSULATION: NYLON (COLOR CODED YELLOW)
- MWID: MAXIMUM WIRE INSULATION DIAMETER
- WIRE SIZE: 12 -10 AWG
4.0 -6.0 MM²
- "UL" LISTING #E32244
"CSA" LISTING #18689
- ALL DIMENSIONS IN INCHES/[MM].
- PARTS ARE ROHS COMPLIANT.
- DIMS. SHOWN ARE FOR REFERENCE ONLY.

SYMBOLS	THIS DRAWING CONTAINS INFORMATION THAT IS PROPRIETARY TO MOLEX ELECTRONIC TECHNOLOGIES, LLC AND SHOULD NOT BE USED WITHOUT WRITTEN PERMISSION			
	DIMENSION UNITS		SCALE	
∇ = 0	INCH/MM	NTS		CURRENT REV DESC: UPDATE VIEW
∇ = 0	GENERAL TOLERANCES (UNLESS SPECIFIED)			
∇ = 0		MM	INCH	EC NO: 629201 DRWN: SCV 2019/12/16 CHK'D: DMYRICK 2019/12/19 APPR: GROJAS01 2019/12/20
∇ = 0	4 PLACES	± ---	± ---	
∇ = 0	3 PLACES	± ---	± 0.005	INITIAL REVISION: DRWN: JJ 1984/11/15 APPR:
∇ = 0	2 PLACES	± 0.13	± 0.01	
∇ = 0	1 PLACE	± 0.25	± ---	SERIES 19137
∇ = 0	0 PLACES	± ---	± ---	
∇ = 0	ANGULAR TOL ± 0.5°		THIRD ANGLE PROJECTION	DRAWING C-SIZE
∇ = 0	DRAFT WHERE APPLICABLE MUST REMAIN WITHIN DIMENSIONS			SHEET NUMBER 1 OF 1

molex

SPADE TONGUE TERMINAL
AVIKRIMP 500-SERIES

PRODUCT CUSTOMER DRAWING

DOCUMENT NUMBER	DOC TYPE	DOC PART	REVISION
CCD50301	PSD	001	A1

MATERIAL NUMBER	CUSTOMER	SHEET NUMBER
SEE TABLE	GENERAL MARKET	1 OF 1