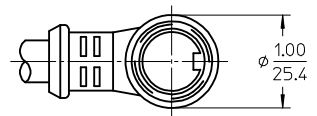
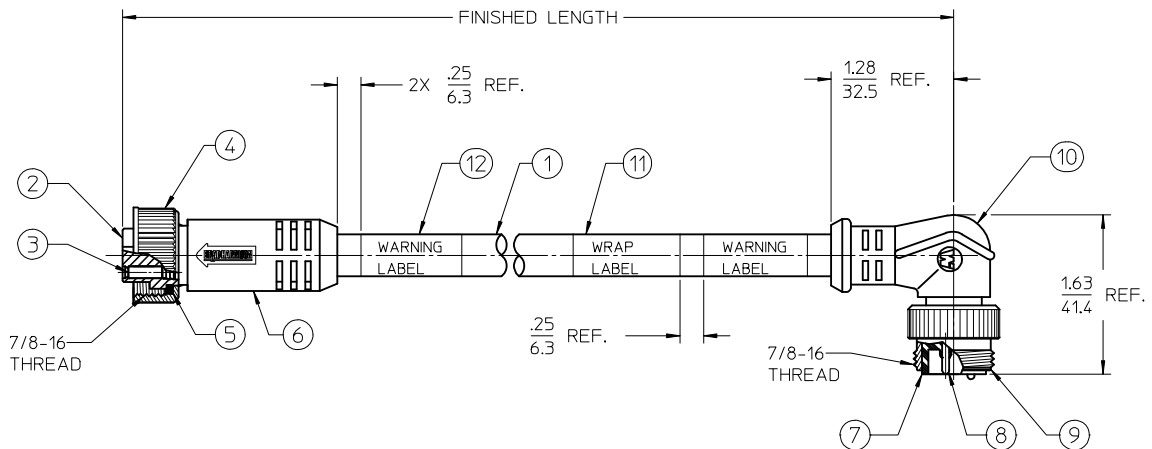


- NOTES:
- MATERIAL: SEE TABLE
 - FINISHES: SEE TABLE
 - WRAP LABEL IS MARKED WITH P/N, DATE CODE VOLTAGE & AMPERAGE
 - MATES WITH: MINI CHANGE POLE RECEPTACLE
 - ELECTRICAL DATA:
 16AWG UL TYPE: TC-ER ST00W STRANDED CABLE
 MAX VOLTAGE: 600V
 MAX CURRENT: 3P 13A, 4P 10A
 PROTECTION IP67 (WHEN MATED)
 TEMPERATURE RANGE: -20°C TO 90°C
 - PACKAGING:
 CABLE ASSEMBLIES ARE BAGGED SEPERATLY IN POLY BAGS
 WITH BAR CODE LABEL ATTACHED TO OUTSIDE OF BAG
 - XX REFERES TO NUMBER OF CIRCUITS



PART NUMBER LEGEND

11X032A45MXXX

- DOUBLE END
- POLE COUNT (3 OR 4)
- MC FEMALE STRAIGHT TO 90 DEG MALE (EXT THD)
- CABLE TYPE: 16 AWG PVC, GRAY
- FINISHED LENGTH:
 M001= .1M
 M010= 1.0M
 M100= 10.0M

12	2	WARNING LABEL	VINYL	ORANGE/BLACK
11	1	WRAP LABEL	VINYL	BLACK/YELLOW
10	1	90 DEG OVERMOLD	PVC	GRAY
9	1	MALE COUPLING NUT	ZINC ALLOY	BLACK
8	XX	CONTACT PIN	Cu ALLOY	GOLD PLATE
7	1	MALE INSERT	PVC	BLACK
6	1	STRAIGHT OVERMOLD	PVC	GRAY
5	1	FRICTION RING	NYLON	WHITE
4	1	FEMALE COUPLING NUT	ZINC ALLOY	BLACK
3	XX	CONTACT SOCKET	Cu ALLOY	GOLD PLATE
2	1	FEMALE INSERT	PVC	BLACK
1	SEE NOTE 5	CABLE	PVC	GRAY
ITEM	QTY	DESCRIPTION	MATERIAL	FINISH

RELEASED EC NO: IPG2016-0750 DRWRNSTONE 2015/11/19 CHKD:BARDE 2015/12/08 APPR: BWOODMAN 2016/02/29	QUALITY SYMBOLS ▽=0 ▽=0	GENERAL TOLERANCES (UNLESS SPECIFIED) <table border="1"> <thead> <tr> <th></th> <th>mm</th> <th>INCH</th> </tr> </thead> <tbody> <tr> <td>4 PLACES ±</td> <td>---</td> <td>± ---</td> </tr> <tr> <td>3 PLACES ±</td> <td>---</td> <td>± ---</td> </tr> <tr> <td>2 PLACES ±</td> <td>---</td> <td>± .01</td> </tr> <tr> <td>1 PLACE ±</td> <td>0.3</td> <td>± ---</td> </tr> <tr> <td>0 PLACE ±</td> <td>---</td> <td>± ---</td> </tr> </tbody> </table>		mm	INCH	4 PLACES ±	---	± ---	3 PLACES ±	---	± ---	2 PLACES ±	---	± .01	1 PLACE ±	0.3	± ---	0 PLACE ±	---	± ---	DIMENSION STYLE IN/MM	SCALE 1:1	DESIGN UNITS INCH	THIRD ANGLE PROJECTION
		mm	INCH																					
	4 PLACES ±	---	± ---																					
	3 PLACES ±	---	± ---																					
	2 PLACES ±	---	± .01																					
1 PLACE ±	0.3	± ---																						
0 PLACE ±	---	± ---																						
DRAWN BY: RSTONE DATE: 2015/11/19 CHECKED BY: BARDE DATE: 2015/12/08 APPROVED BY: BWOODMAN DATE: 2016/02/29		TITLE MINI-CHANGE 16 AWG MALE/FEMALE 90/STR GRAY PVC CABLE		molex		SHEET NO. 1 OF 1																		
MATERIAL NO. - DOCUMENT NO. SD-130062-030		THIS DRAWING CONTAINS INFORMATION THAT IS PROPRIETARY TO MOLEX INCORPORATED AND SHOULD NOT BE USED WITHOUT WRITTEN PERMISSION																						
DRAFT WHERE APPLICABLE MUST REMAIN WITHIN DIMENSIONS		SIZE C																						