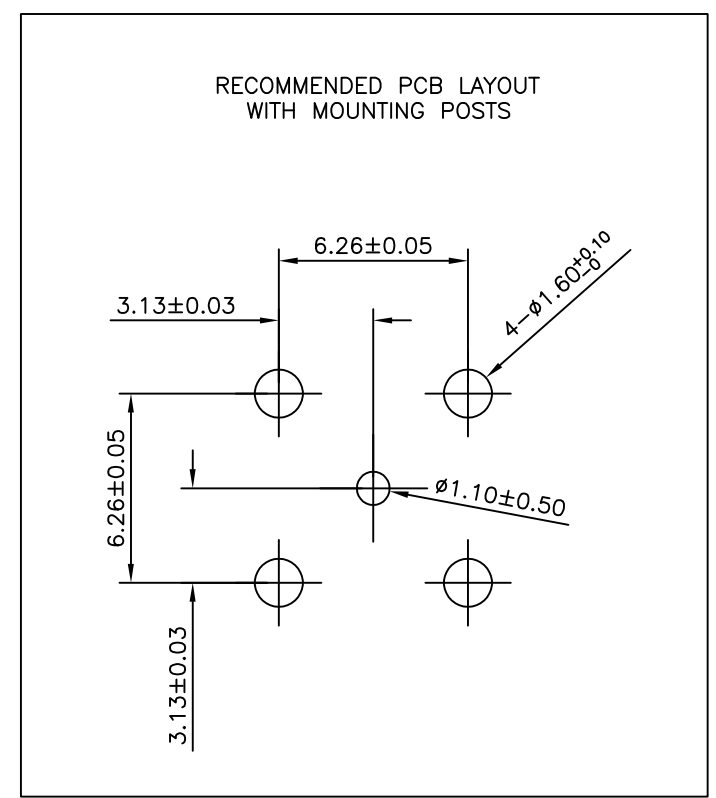
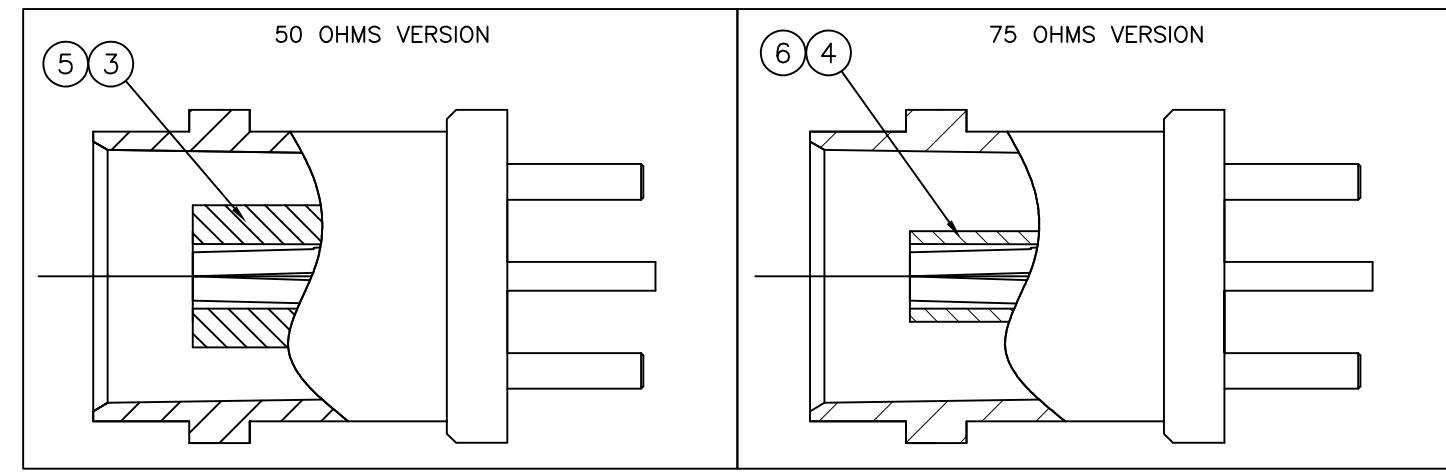
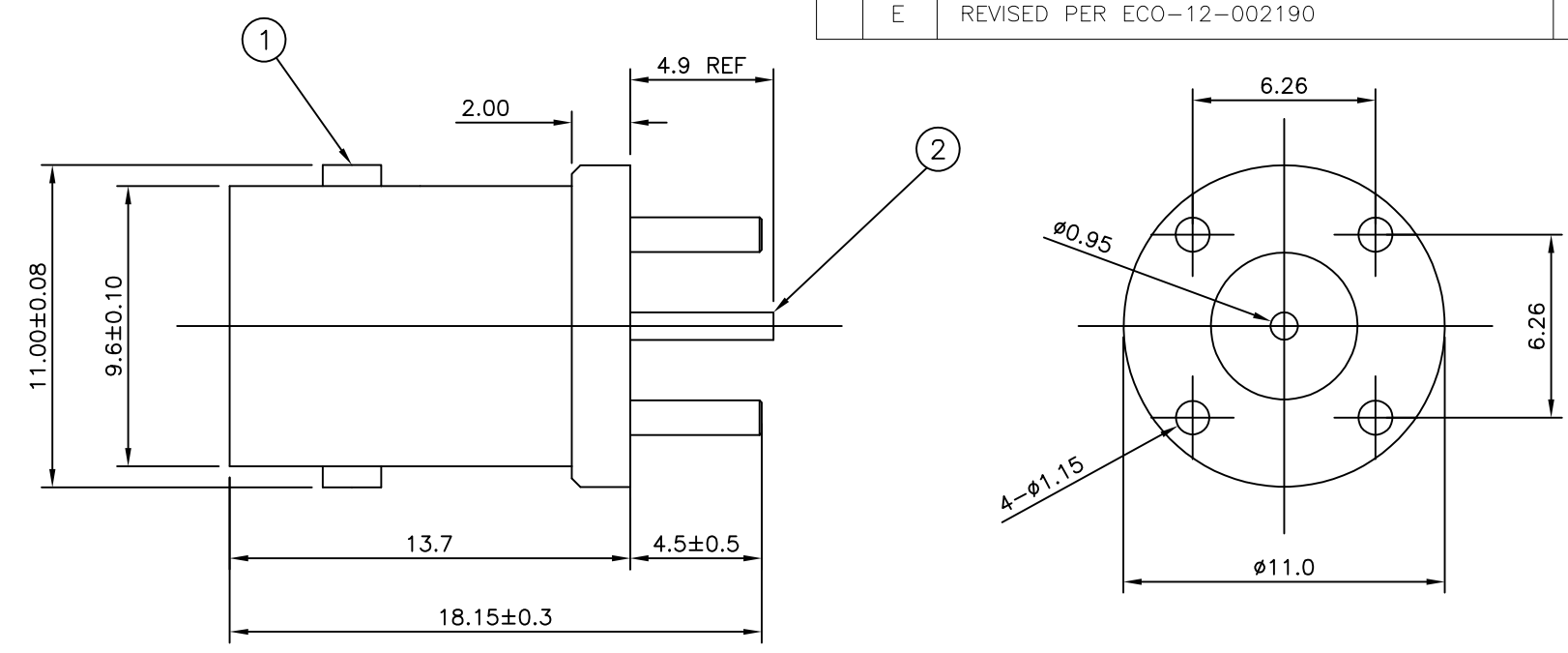


THIS DRAWING IS UNPUBLISHED. RELEASED FOR PUBLICATION SEP ,2004.
 © COPYRIGHT 2004 By - ALL RIGHTS RESERVED.

LOC	DIST	REVISIONS			
P	LTR	DESCRIPTION	DATE	DWN	APVD
E	B	D1	REVISED PER ECO-11-005033	31MAR11	RK HMR
E	B	E	REVISED PER ECO-12-002190	03FEB12	TITAN MARTIN

- NOTES**
- 1 100 TRAY PACK IN ACCORDANCE WITH AMP SPEC 107-3275
 - 2 SINGLE PACK IN ACCORDANCE WITH AMP SPEC 107-3275
 - 3 Au PLATING
 - 4 Ni PLATING
 - 5 FOR TECHNICAL DATA REFER TO YOUR LOCAL TE CONNECTIVITY SALES OFFICE
 - 6 ALL DIMENSIONS ARE NOMINAL FOR REFERENCE ONLY UNLESS OTHERWISE STATED



QUANTITY PER ASSY								PARTS LIST		
1	1	-	-	-	-	-	-	PTFE	INSULATOR	6
-	-	1	1	-	-	-	-	PTFE	INSULATOR	5
-	-	-	-	1	1	-	-	POLYMETHYLPENTENE	INSULATOR	4
-	-	-	-	-	-	1	1	POLYMETHYLPENTENE	INSULATOR	3
1	1	1	1	1	1	1	1	PHOS BRONZE	CONTACT	2
1	1	1	1	1	1	1	1	ZINC ALLOY	BODY	1
5--7	5--6	5--5	5--4	5--3	5--2	5--1	5--0			
△	△	△	△	△	△	△	△			

OBSOLETE

THIS DRAWING IS A CONTROLLED DOCUMENT.		DWN	11 Mar 09	TE Connectivity BNC STRAIGHT LOW PROFILE PCB SOCKET	
DIMENSIONS: mm		CHK	11 Mar 09		
TOLERANCES UNLESS OTHERWISE SPECIFIED:		APVD	11 Mar 09		
0 PLC ± - 1 PLC ± - 2 PLC ± - 3 PLC ± - 4 PLC ± - ANGLES ± -		NAME			
MATERIAL		PRODUCT SPEC		RESTRICTED TO	
FINISH		108-112000		SIZE	A3
		APPLICATION SPEC		CAGE CODE	00779
		WEIGHT		DRAWING NO	C-1634503
		CUSTOMER DRAWING		SCALE	NTS
				SHEET	1 OF 1
				REV	E