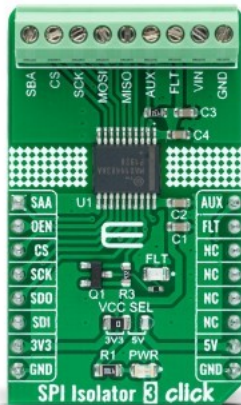


SPI Isolator 3 Click



PID: MIKROE-4651

SPI Isolator 3 Click is a compact add-on board that contains a digital isolator optimized for a serial peripheral interface. This board features the [MAX14483](#), a 6-channel 3.75kVRMS digital galvanic isolator with a very low propagation delay on the SDI, SDO, and SCLK channels from [Analog Devices](#). Besides a second enable control input, which allows MAX14483 to isolate multiple SPI devices, and an auxiliary channel available for passing timing or control signals from the master side to the slave side, the MAX14483 also possesses power monitors provided for both power domains to signal if the opposite side of the isolator is ready for operation. Thus, this Click board™ is suitable for general SPI-bus isolation and the industrial, process, and building automation, in programmable logic controllers, and many more.

SPI Isolator 3 Click is supported by a [mikroSDK](#) compliant library, which includes functions that simplify software development. This [Click board™](#) comes as a fully tested product, ready to be used on a system equipped with the [mikroBUS™](#) socket.

Mikroe produces entire development toolchains for all major microcontroller architectures.

Committed to excellency, we are dedicated to helping engineers bring the project development up to speed and achieve outstanding results.



ISO 27001: 2013 certification of informational security management system.
 ISO 14001: 2015 certification of environmental management system.
 OHSAS 18001: 2008 certification of occupational health and safety management system.



ISO 9001: 2015 certification of quality management system (QMS).

Specifications

Type	Isolators,SPI
Applications	Can be used for general SPI-bus isolation and the industrial, process, and building automation, in programmable logic controllers, and many more.
On-board modules	MAX14483 - 6-channel 3.75kVRMS digital isolator with a very low propagation delay on the SDI, SDO, and SCLK channels from Maxim Integrated
Key Features	Low power consumption, 6 isolated channels, low propagation delay on SCLK, SDI, and SDO lines, robust galvanic isolation of digital signals, shared interrupt feature, auxiliary channel for timing or control, and more.
Interface	SPI
ClickID	No
Compatibility	mikroBUS
Click board size	M (42.9 x 25.4 mm)
Input Voltage	3.3V or 5V,External

Resources

[mikroBUS™](#)

[mikroSDK](#)

[Click board™ Catalog](#)

[Click boards™](#)

Downloads

[SPI Isolator 3 click 2D and 3D files](#)

[MAX14483 datasheet](#)

[SPI Isolator 3 click schematic](#)

[SPI Isolator 3 click example on Libstock](#)

Mikroe produces entire development toolchains for all major microcontroller architectures.

Committed to excellency, we are dedicated to helping engineers bring the project development up to speed and achieve outstanding results.



ISO 27001: 2013 certification of informational security management system.
 ISO 14001: 2015 certification of environmental management system.
 OHSAS 18001: 2008 certification of occupational health and safety management system.



ISO 9001: 2015 certification of quality management system (QMS).