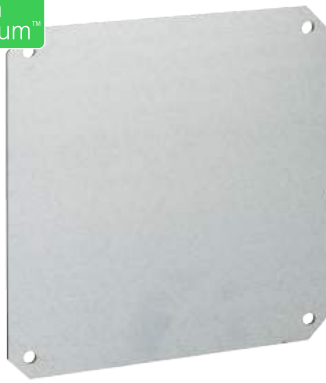


Product data sheet

Specifications



Metallic mounting plate for PLS box 54x54cm

NSYPMM5454

Main

Range	Thalassa
Accessory / separate part category	Mounting accessory
Product or component type	Mounting plate
Device application	Multi-purpose
Enclosure nominal dimensions	-
Mounting location	Back inserts
Mounting plate description	Plain
Range compatibility	Thalassa (Thalassa PLS)
Device composition	1 mounting plate
Material	Galvanised steel

Complementary

Fixing mode	By screws - screw type M6 - on back inserts location
Permanent permissible load	150 kg
Height	540 mm nominal:
Width	540 mm nominal:

Packing Units

Unit Type of Package 1	PCE
Number of Units in Package 1	1
Package 1 Height	2.0 cm
Package 1 Width	50.0 cm
Package 1 Length	50.0 cm
Package 1 Weight	4.1 kg

Offer Sustainability

Sustainable offer status	Green Premium product
REACH Regulation	REACH Declaration
REACH free of SVHC	Yes

EU RoHS Directive	Pro-active compliance (Product out of EU RoHS legal scope) EU RoHS Declaration
Toxic heavy metal free	Yes
Mercury free	Yes
China RoHS Regulation	China RoHS declaration Pro-active China RoHS declaration (out of China RoHS legal scope)
RoHS exemption information	Yes
Environmental Disclosure	Product Environmental Profile

Contractual warranty

Warranty	18 months
-----------------	-----------

Recommended replacement(s)