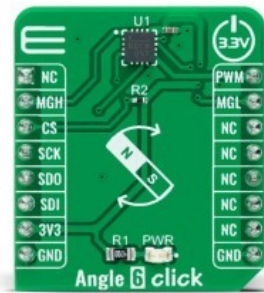


## Angle 6 Click



PID: MIKROE-5282

**Angle 6 Click** is a compact add-on board that detects the absolute angular position of a permanent magnet, typically a diametrically magnetized cylinder on a rotating shaft. This board features the [MAQ470GOE](#), a 12-bit contactless angle sensor with PWM output from [Monolithic Power Systems](#). It supports a wide range of magnetic field strengths and spatial configurations, with both end-of-shaft and off-axis (side-shaft mounting), supported configurations. Fast data acquisition and processing provides accurate angle measurement at speeds from 0 to 60,000 rpm, alongside magnetic field strength detection with programmable thresholds. This Click board™ offers a highly reliable and contactless method to measure various applications' angles, position, and speed.

Angle 6 Click supports the [mikroSDK](#) compliant library, which includes functions that simplify software development. This [Click board™](#) comes as a thoroughly tested product, ready to be used on a system equipped with the [mikroBUS™](#) socket.

Mikroe produces entire development toolchains for all major microcontroller architectures.

Committed to excellency, we are dedicated to helping engineers bring the project development up to speed and achieve outstanding results.



ISO 27001: 2013 certification of informational security management system.  
 ISO 14001: 2015 certification of environmental management system.  
 OHSAS 18001: 2008 certification of occupational health and safety management system.



ISO 9001: 2015 certification of quality management system (QMS).

## Specifications

Type	Magnetic
Applications	Can be used as a highly reliable and contactless method to measure various applications' angles, position, and speed
On-board modules	MAQ470GQE - 12-bit contactless angle sensor with PWM output from Monolithic Power Systems
Key Features	Fast data acquisition, SPI serial interface, magnetic field strength detection, contactless sensing for long life, supported both end-of-shaft and off-axis, and many more
Interface	PWM,SPI
ClickID	No
Compatibility	mikroBUS
Click board size	S (28.6 x 25.4 mm)
Supply Voltage	3.3V

## Resources

[mikroBUS™](#)

[mikroSDK](#)

[Click boards™](#)

## Downloads

[Angle 6 click 2D and 3D files](#)

[Angle 6 click schematic](#)

[MAQ470GQE datasheet](#)

[Angle 6 click example on Libstock](#)

Mikroe produces entire development toolchains for all major microcontroller architectures.

Committed to excellency, we are dedicated to helping engineers bring the project development up to speed and achieve outstanding results.



ISO 27001: 2013 certification of informational security management system.  
 ISO 14001: 2015 certification of environmental management system.  
 OHSAS 18001: 2008 certification of occupational health and safety management system.



ISO 9001: 2015 certification of quality management system (QMS).