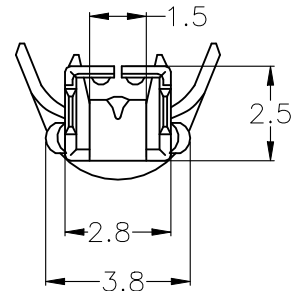
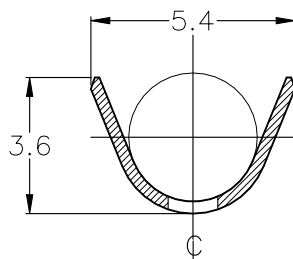
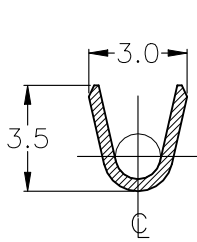
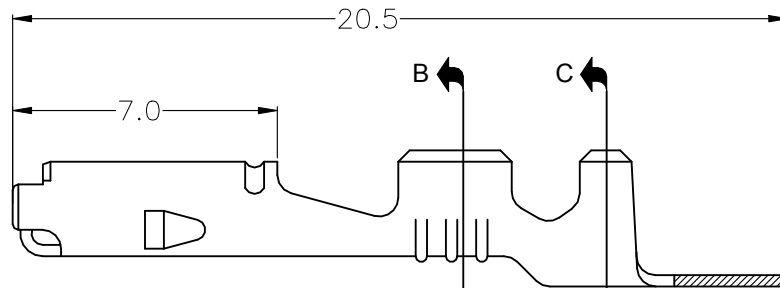
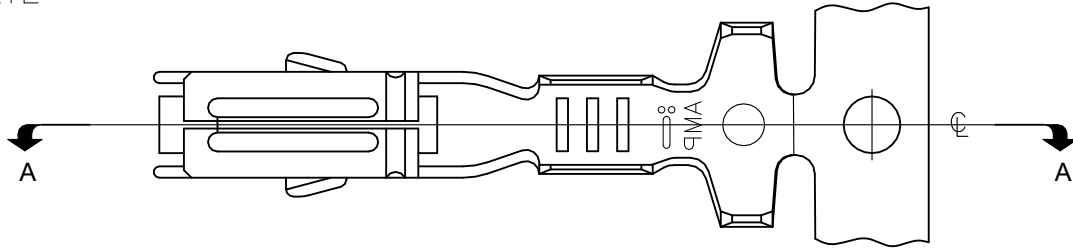
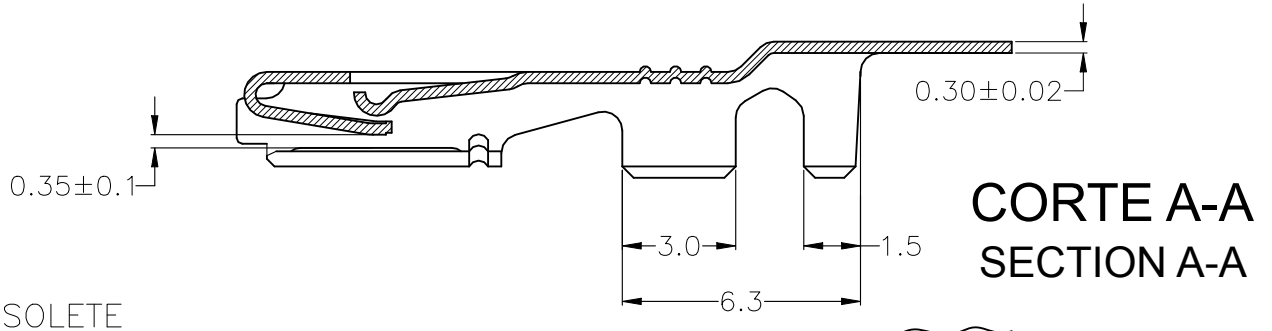


| REVISIONS | | | | | |
|-----------|-----|---------------------------|-----------|-----|------|
| P | LTR | DESCRIPTION | DATE | DWN | APVD |
| | C2 | REVISED PER ECN-22-166554 | 23OCT2022 | AP | AB |



CORTE B-B
SECTION B-B

CORTE C-C
SECTION C-C

| | | | |
|---|----------------------------|----------------------------------|--------------------|
| WIRE RANGE 1,0–1,5mm ² ISUL. RANGE DIA. 1,4–2,4 | PRÉ-PRATEADO PRE-SILVER | LATÃO BRASS | 880698-3 |
| | PRÉ-ESTANHADO PRE TIN | BRONZE FOSFOROSO PHOS. BRONZE | 880698-2 |
| | PRÉ-ESTANHADO PRE TIN | LATÃO BRASS | 880698-1 |
| | FINISH | MATERIAL | PART NUMBER |

TE Connectivity. All Rights Reserved.



| | | | | | | |
|--|-------------------------------|--|--------------------------------|--------------------|------------------------|--------------------|
| DIMENSIONS: mm TOLERANCES UNLESS OTHERWISE SPECIFIED: 0 PLC ± - 1 PLC ± 0.3 2 PLC ± - 3 PLC ± 3 4 PLC ± - ANGLES ± - | DWN H.LIVERARO 25JAN01 | MATERIAL VER TABELA/SEE TABLE | FINISH VER TABELA/SEE TABLE | | | |
| | CHK N.C.LAPRESA 25JAN01 | TE Connectivity NAME TERMINAL, 1.8 ECONOSEAL "J" SERIES MARK II+ REC. | | | | |
| APVD L.G.DALTO 25JAN01 | SIZE A4 | | | CAGE CODE 00779 | DRAWING NO C-880698 | RESTRICTED TO - |
| PRODUCT SPEC - | APPLICATION SPEC - | WEIGHT - | CUSTOMER DRAWING | SCALE 1:1 | SHEET 1 OF 1 | REV C2 |

