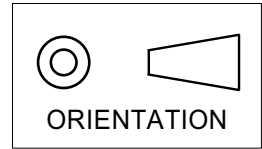
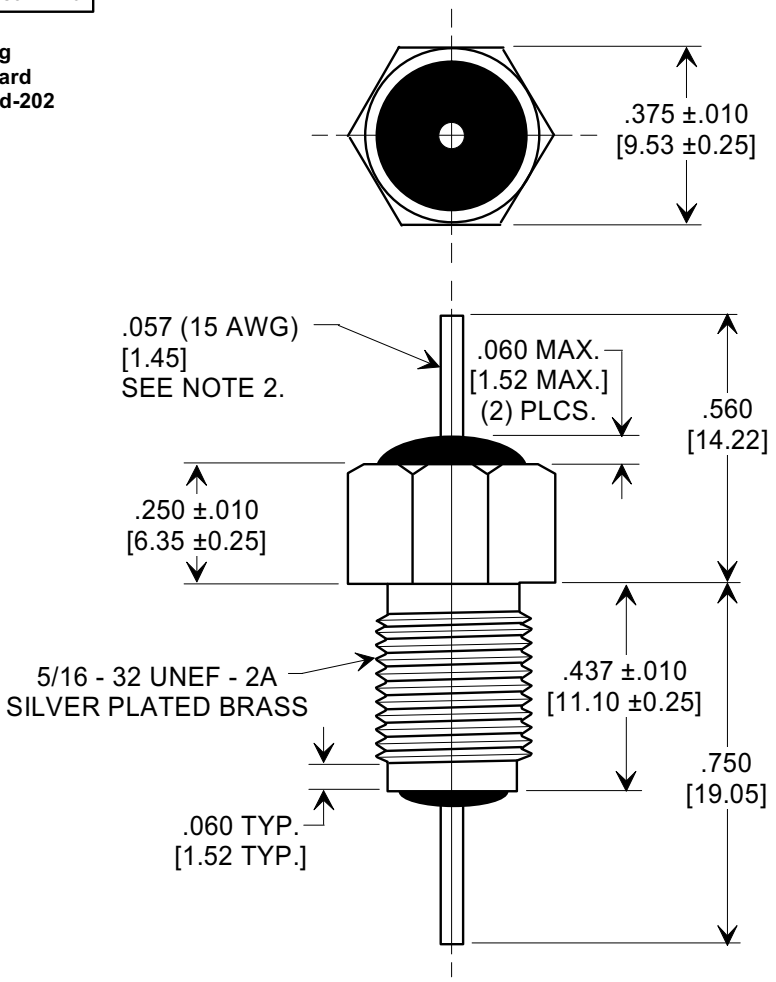
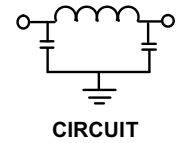


This drawing is the property of Tusonix, Inc., and may not be used, reproduced, published or disclosed to others without expressed authorization by Tusonix Inc.

MARKETING SALES DRAWING
DIMENSIONS IN INCHES - DO NOT SCALE THIS DRAWING
DIMENSIONS IN METRIC - []



Electrical Testing
per Tusonix standard
test plans and Mil-Std-202
Test Methods.



NOTES:

- TUSONIX NON-RoHS PART NUMBER: 4206-007.
TUSONIX RoHS COMPLIANT PART NUMBER: 4206-007 LF.
CUSTOMER MUST SPECIFY NON-RoHS OR RoHS PART NUMBER WHEN ORDERING.
- LEAD FINISH: NON-RoHS PART #: 60/40 SOLDER PLATED COPPER. RoHS PART #: SILVER PLATED COPPER.
- PART MARKING: TRADEMARK AND VARIATION NUMBER ON HEX FLATS.
NON-RoHS PART: BLACK INK. RoHS PART: GREEN INK.
- SUPPLIED WITH SILVER PLATED COPPER ALLOY HEX NUT AND INTERNAL TOOTH LOCK WASHER.

CAP. pF	WORKING VOLTAGE Vdc		CURRENT dc	MINIMUM NO LOAD INSERTION LOSS (dB) AT 25°C PER MIL-STD-220				IR Min	DWV
	+ 85° C	+ 125° C		10 MHz	100 MHz	1 GHz	10 GHz		
4500 / 9000	700	500	25 A	15	65	70	70	10 G	1400 VDC

X-2015 Rev-0	REVISION RECORD		ECO-4643	--TOLERANCES-- Unless Otherwise Specified				Title	
	Original Release C.O. 3139	0		DECIMAL ± .031 [0.79]				EMI FILTER Drawn S.M. 12-03-98 Scale 2.5 X	
	DWN TO COMP. FMT DIM. RREVISED .560 WAS "A". L.E. 12-04-98	1		ANGLES ±					
	19981202-1-01 ADDED NOTES & METRIC. S.M. 01-27-99	2		TUSONIX TUCSON, ARIZONA				Approved J.Mc. 12-03-98	
	19990126-1-01 REVISED NOTES. S.M. 10-24-05	3						A	
20051006-1-04 REVISED NOTES. R.J. 06-22-15	A								