

4

3

2

1


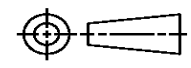
THIS DRAWING IS UNPUBLISHED. RELEASED FOR PUBLICATION  
© COPYRIGHT ALL RIGHTS RESERVED.

LOC	DIST	REVISIONS			
P	LTR	DESCRIPTION	DATE	DWN	APVD
	B1	ECR-16-009820	18JUL2016	GK	SD

# REPLACED BY OCEAN STYLE APPLICATOR PART NUMBER 2150605-1

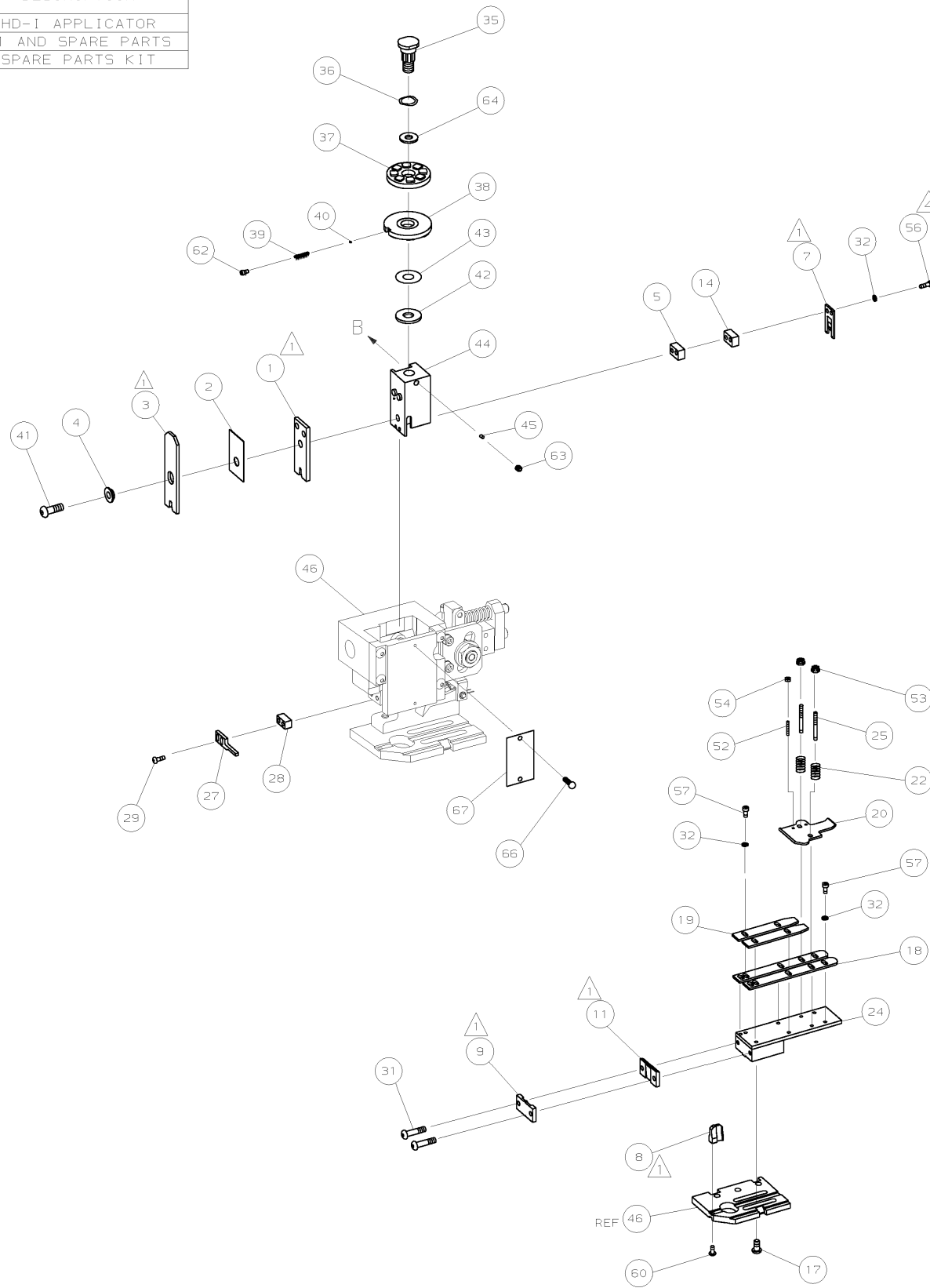
FOR REPLACEMENT PARTS FOR APPLICATOR 1339641  
REFER TO ADDITIONAL PAGE(S). SPARE PARTS KIT (IF LISTED)  
WILL REMAIN AVAILABLE.

THE REPLACEMENT OCEAN STYLE APPLICATOR HAS THE  
SAME TERMINATOR/PRESS INTERFACE AS APPLICATOR  
1339641

THIS DRAWING IS A CONTROLLED DOCUMENT.		DWN	GOPALAKRISHNA HV		 TE Connectivity
DIMENSIONS:		CHK	GOPALAKRISHNA HV		
		TOLERANCES UNLESS OTHERWISE SPECIFIED:		NAME	
		0 PLC ± 1 PLC ± 2 PLC ± 3 PLC ± 4 PLC ± ANGLES ±		END FEED HD-I APPLICATOR	
MATERIAL		FINISH		APVD	STOUGH DALE
				PRODUCT SPEC	
				APPLICATION SPEC	
				SIZE	CAGE CODE
				A3	
				DRAWING NO	RESTRICTED TO
				©- 1339641	
				WEIGHT	
				CUSTOMER DRAWING	SCALE
					SHEET 1 OF 2
					REV B1

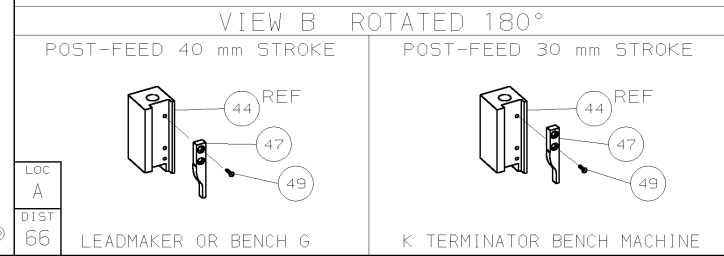
PART NUMBER	REV	FIRST USED	TERMINATOR	FEED TYPE	DESCRIPTION
1339641 -1	B	-	BENCH & LEADMAKER	MECH POST FEED	HD-I APPLICATOR
7-1339641 -1	B	-	BENCH & LEADMAKER	MECH POST FEED	-1 AND SPARE PARTS
7-1339641 -7	B	-	-	-	SPARE PARTS KIT

CRIMP DATA AMP TERMINAL AMP CRIMP SPECS			
TERMINAL NAME: RING TONGUE			
CRIMP	SIZE	TYPE	RANGE
WIRE	3.30 [.130 IN]	F	1.00mm <sup>2</sup> - 2.50mm <sup>2</sup>
INSUL	5.33 [.210 IN]	F	2.16-3.81 [.085-.150 IN]
WIRE STRIP LENGTH		APPL INSTRUCTION	
4.80-5.60 [.189-.220 IN]		408-8323	
TERMINAL	-	-	FEED
APPL SPEC	114-3118	-	21.72 [.855 IN]
TERMINALS APPLIED			
626033	-	-	-
626031	-	-	-
626032	-	-	-
626055	-	-	-
-	-	-	-
-	-	-	-
-	-	-	-
-	-	-	-
-	-	-	-
WIRE SIZE	CRIMP HEIGHT	PIN PN & LENGTH [IN]	
mm <sup>2</sup> AWG			
2.50mm <sup>2</sup>	2.41 ±0.05 [.095 ±.002 IN]	5-354778-3 [.2760]	
14 AWG	2.30 ±0.05 [.091 ±.002 IN]	6-354778-4 [.2815]	
2.00mm <sup>2</sup>	2.29 ±0.05 [.090 ±.002 IN]	6-354778-3 [.2810]	
1.50mm <sup>2</sup>	2.18 ±0.05 [.086 ±.002 IN]	7-354778-1 [.2850]	
16 AWG	2.11 ±0.05 [.083 ±.002 IN]	8-354778-1 [.2900]	
1.00mm <sup>2</sup>	2.06 ±0.05 [.081 ±.002 IN]	8-354778-2 [.2905]	
-	-	-	-
-	-	-	-
-	-	-	-
-	-	-	-
-	-	-	-
-	-	-	-
-	-	-	-
-	-	-	-
-	-	-	-
-	-	-	-



QTY	REQD	PER ASSY	PART NO	DESCRIPTION	ITEM NO	
-	1	1	1339641	PRINT, APPLICATOR LOG SHEET	73	
-	1	1	1338705-2	DOCUMENTATION PACKAGE	72	
-	-	-	-	-	71	
-	-	-	-	-	70	
-	-	-	-	-	69	
-	-	-	-	-	68	
-	1	1	461264-1	PLATE, IDENTIFICATION	67	
-	2	2	21017-2	SCR,DRIVE (#2X.19) ID PLATE	66	
-	-	-	-	-	65	
-	1	1	986950-1	WASHER, FLAT PRECISION	64	
-	1	1	3-18031-0	SCR,SKT SET (M6X6) RAM	63	
-	1	1	18023-9	SCR,SKT CAP (M4X6) CP DSC	62	
-	-	-	-	-	61	
-	1	1	18024-7	SCR,BHC (M4X10) ANVIL	60	
-	-	-	-	-	59	
-	-	-	-	-	58	
-	6	6	1-18023-0	SCR,SHC (M4X8) STRIP GUIDE	57	
-	2	2	1-18023-3	SCR,SHC (M4X16) SLUG BLADE	56	
-	-	-	-	-	55	
-	2	2	18029-1	NUT,HEX (M3) DRAG	54	
-	2	2	986965-1	NUT,HEX SL (M4) DRAG STUD	53	
-	2	2	2-18032-2	SCR,SKT SET (M3X10) DRAG	52	
-	-	-	-	-	51	
-	-	-	-	-	50	
-	1	1	18024-3	SCR,BHC (M3X10) CAM	49	
-	-	-	-	-	48	
-	1	1	1338676-1	CAM, POST-FEED 30 & 40 mm ST	47	
-	1	1	1338662-1	APPLICATOR, BASIC (SUBASSY)	46	
-	1	1	690191-1	PLUG, NYLON	45	
-	1	1	1320998-1	RAM	44	
-	1	1	690125-1	WASHER, LAMINATED	43	
-	1	1	690124-1	WASHER, RAM	42	
-	1	1	2-18024-6	SCREW,BHC (MBX25) CRIMPER	41	
-	1	1	23241-1	BALL, STEEL	40	
-	1	1	2-22278-7	SPRING, COMPRESSION	39	
-	1	1	1320922-1	DISC, INSULATION	38	
-	1	1	354777-1	WIRE DISC, PLASTIC	37	
-	1	1	22480-5	WASHER, SPRING	36	
-	1	1	690212-1	POST, RAM	35	
-	-	-	-	-	34	
-	-	-	-	-	33	
-	8	8	18025-2	WASHER, LOCK (M4) SHEAR BL	32	
-	2	2	1-18024-0	SCR,BHC (M4X20) SHEAR PL	31	
-	-	-	-	-	30	
-	2	2	18024-8	SCR,BHC (M4X12) STRIPPER	29	
-	1	1	3-690451-2	SPACER, STRIPPER	28	
-	1	1	240639-1	STRIPPER	27	
-	-	-	-	-	26	
-	2	2	1320906-1	DRAG, STUD	25	
-	1	1	1320995-1	STRIP GUIDE	24	
-	2	2	4-22281-1	SPRING, DRAG	23	
-	-	-	-	-	22	
-	1	1	1338665-1	DRAG, STOCK	20	
-	2	2	1338664-1	GUIDE, UPPER STRIP	19	
-	2	2	1338663-4	GUIDE, LOWER STRIP	18	
-	4	4	1-18024-8	SCR,BHC (M6X12) STRIP GD PL	17	
-	-	-	-	-	16	
-	-	-	-	-	15	
-	1	1	6-240641-3	SPACER, SLUG BLADE	14	
-	-	-	-	-	13	
-	-	-	-	-	12	
-	1	1	240644-1	PLATE, REAR SHEAR	11	
-	-	-	-	-	10	
-	1	1	690482-4	PLATE, FRONT SHEAR	9	
-	1	2	1	1333221-2	ANVIL	8
-	1	1	1	690474-4	BLADE, SLUG	7
-	-	-	-	-	6	
-	1	1	1	1-240641-4	SPACER, SLUG BLADE	5
-	1	1	1	238009-1	SPACER, BLOCK CRIMPER	4
-	1	2	1	1-456134-1	CRIMPER, INSULATION	3
-	1	1	1	455888-8	SPACER, CRIMPER	2
-	1	2	1	456410-3	CRIMPER, WIRE	1

- 1. RECOMMENDED SPARE PARTS.
- 2. GREASE RAM, CAM, CAM FOLLOWER AND FEED ROD LIGHTLY.
- 3. LUBRICATE DAILY PER THE APPLICATOR INSTRUCTION SHEET SUPPLIED WITH THE APPLICATOR.
- 4. CUT TO LENGTH AT ASSEMBLY.



LOC  
A  
DIST  
66

QTY REQD PER ASSY REVISION OF EACH ASSY NO (WHEN BLANK, USE DWG REVISION)

PARTS LIST

DIMENSIONS: mm (INCHES)

DO NOT SCALE PRINT.

TOLERANCES UNLESS OTHERWISE SPECIFIED:

1 PLC DEC ±-  
2 PLC DEC ±-  
3 PLC DEC ±-

ANGLES ±-  
SURF TEXTURE.

REMOVE BURRS, BREAK SHARP EDGES R0.38 MAX

DR L.LOFTHOUSE APP OSNOVOO  
F.BACKHURST  
CHK 18JAN01 REL 18JAN01  
M.CLIFFORD L.LOFTHOUSE

AMP Incorporated  
Harrisburg, PA 17105-3608

NAME END FEED HD-I APPLICATOR MACHINE REF HD-I APPL

SCALE - DWG NO 1339641 SHEET 1 OF 1 REV B

CASE CODE 00779 CUSTOMER AND ASSEMBLY DRAWING RESTRICTED TO