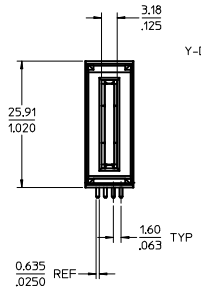
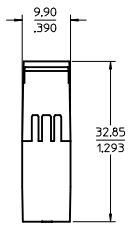
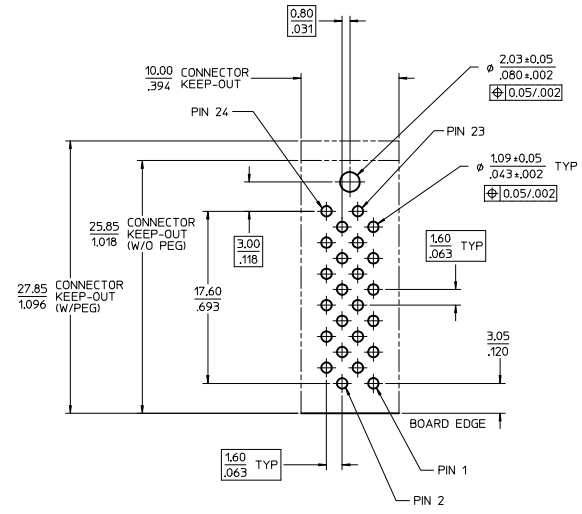
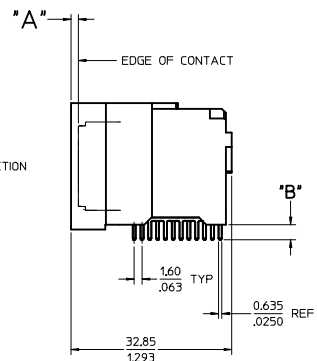


| PART NUMBER | DIM 'A' | DIM 'B' | BLADE TYPE | PCB THICKNESS | PLATING | PEGS |
|-------------|-----------|-----------|------------|---------------|--|----------|
| 75556-5000 | 0.00/.000 | 3.06/.120 | LONG | 2.39/.094 | 30μ INCH MIN SELECT HARD GOLD IN CONTACT AREA WITH 100μ INCH MIN SELECT TIN IN TAIL AREA OVER 50μ INCH MIN NICKEL OVERALL. | W/O PEGS |
| 75556-5001 | 0.00/.000 | 3.81/.150 | LONG | 3.18/.125 | | |
| 75556-5100 | 1.50/.059 | 3.06/.120 | SHORT | 2.39/.094 | | |
| 75556-5101 | 1.50/.059 | 3.81/.150 | SHORT | 3.18/.125 | | |
| 75556-1500 | 0.00/.000 | 3.06/.120 | LONG | 2.39/.094 | 30μ INCH MIN SELECT HARD GOLD IN CONTACT AREA WITH 100μ INCH MIN SELECT TIN IN TAIL AREA OVER 50μ INCH MIN NICKEL OVERALL. | W/PEGS |
| 75556-1501 | 0.00/.000 | 3.81/.150 | LONG | 3.18/.125 | | |
| 75556-1510 | 1.50/.059 | 3.06/.120 | SHORT | 2.39/.094 | | |
| 75556-1511 | 1.50/.059 | 3.81/.150 | SHORT | 3.18/.125 | | |

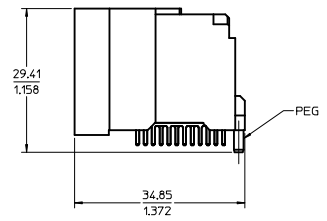


75556-5*** SHOWN (W/O PEG)



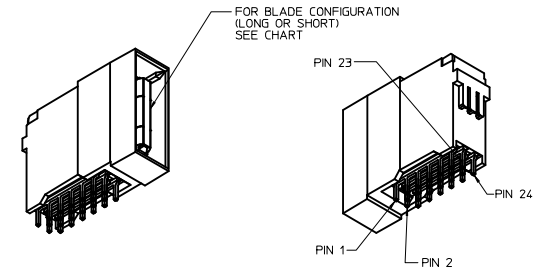
PCB LAYOUT SCALE: 4:1

RECOMMENDED MIN PCB THICKNESS : SEE TABLE

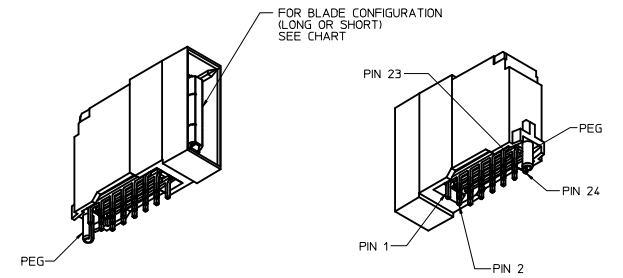


75556-15** SHOWN (W/PEG)

- NOTES:
- MATERIALS:
- HOUSING: 30% GLASS FILLED, LCP 94V-0, COLOR BLACK
- TERMINALS: COPPER ALLOY
- PLATING: PER ES-88 - SEE CHART
 - SEE CHART FOR REFERENCE DOCUMENTS
 - PLUG MATES WITH RECEPTACLE ASSEMBLIES: 75542-5000 & 75542-5001
 - MODULE IS DESIGNED FOR SOLDERING TO THE PCB
 - MODULE ASSEMBLY IS RoHS COMPLIANT
 - GATHERABILITY: ±0.65/.026 X-DIRECTION
±1.30/.051 Y-DIRECTION



75556-5100 SHOWN (W/O PEG)

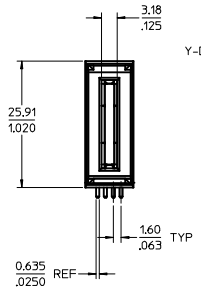
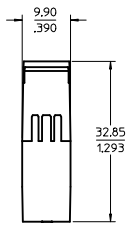


75556-1500 SHOWN (W/PEG)

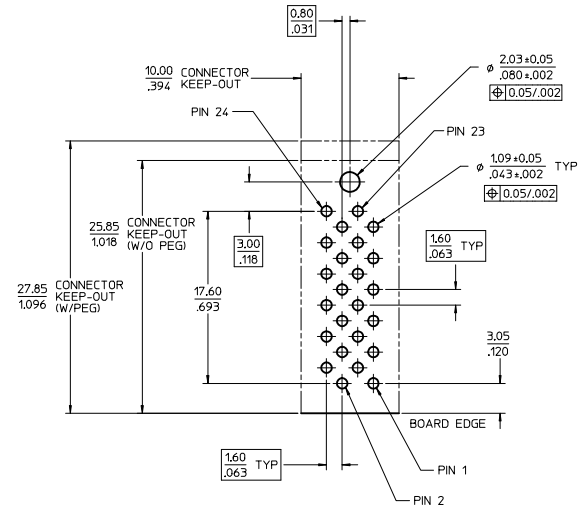
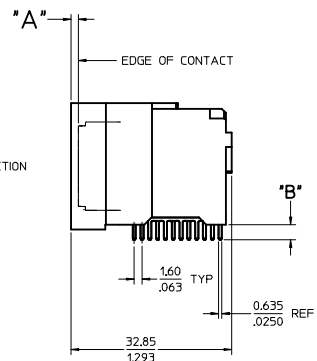
| REFERENCE DOCUMENTS | |
|---------------------|--|
| PS-75431-999 | PRODUCT SPECIFICATION: PERFORMANCE AND RATINGS |
| SD-75555-*** | FINAL ASSEMBLY CONFIGURATION DRAWING |

| REV | DESCRIPTION | QUALITY SYMBOLS | | GENERAL TOLERANCES (UNLESS SPECIFIED) | | DIMENSION STYLE | | SCALE | DESIGN UNITS | THIRD ANGLE PROJECTION |
|--|---------------|-----------------|--------|---------------------------------------|--------|-----------------|------|---|--------------------|------------------------------|
| | | mm | INCH | mm | INCH | MM/IN | DATE | TITLE | | |
| 1 | REVISED CHART | ±0.05 | ±0.002 | 4 PLACES ±--- | ±--- | DRAWN BY | DATE | EXTREME POWERMASS 150 AMP MODULE, PLUG | MOLEX INCORPORATED | SHEET NO. 1 OF 1 |
| 2 | DRWNG:CHANG1 | ±0.05 | ±0.002 | 3 PLACES ±--- | ±0.008 | CHECKED BY | DATE | | | |
| 3 | CHKD:KANG | ±0.05 | ±0.002 | 2 PLACES ±0.20 | ±0.013 | APPROVED BY | DATE | | | |
| 4 | APPR:KHLIM | ±0.05 | ±0.002 | 1 PLACE ±0.33 | ±--- | ANGULAR ±1/2° | | MATERIAL NO. SEE CHART | | DOCUMENT NO. SD-75556-100 |
| DRAFT WHERE APPLICABLE MUST REMAIN WITHIN DIMENSIONS | | | | | | | | | | |

| PART NUMBER | DIM 'A' | DIM 'B' | BLADE TYPE | PCB THICKNESS | PLATING | PEGS |
|-------------|-----------|-----------|------------|---------------|--|----------|
| 75556-5000 | 0.00/.000 | 3.06/.120 | LONG | 2.39/.094 | 30μ INCH MIN SELECT HARD GOLD IN CONTACT AREA WITH 100μ INCH MIN SELECT TIN IN TAIL AREA OVER 50μ INCH MIN NICKEL OVERALL. | W/O PEGS |
| 75556-5001 | 0.00/.000 | 3.81/.150 | LONG | 3.18/.125 | | |
| 75556-5100 | 1.50/.059 | 3.06/.120 | SHORT | 2.39/.094 | | |
| 75556-5101 | 1.50/.059 | 3.81/.150 | SHORT | 3.18/.125 | | |
| 75556-1500 | 0.00/.000 | 3.06/.120 | LONG | 2.39/.094 | 30μ INCH MIN SELECT HARD GOLD IN CONTACT AREA WITH 100μ INCH MIN SELECT TIN IN TAIL AREA OVER 50μ INCH MIN NICKEL OVERALL. | W/PEGS |
| 75556-1501 | 0.00/.000 | 3.81/.150 | LONG | 3.18/.125 | | |
| 75556-1510 | 1.50/.059 | 3.06/.120 | SHORT | 2.39/.094 | | |
| 75556-1511 | 1.50/.059 | 3.81/.150 | SHORT | 3.18/.125 | | |

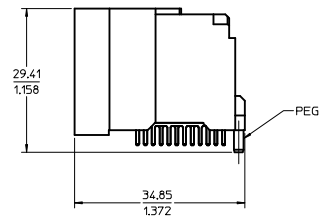


75556-5*** SHOWN (W/O PEG)



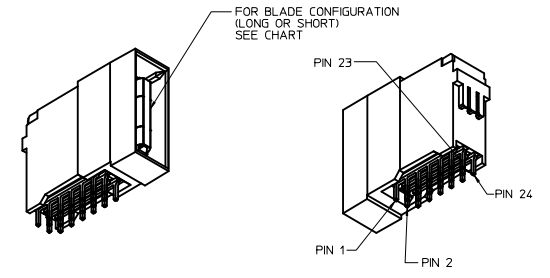
PCB LAYOUT SCALE: 4:1

RECOMMENDED MIN PCB THICKNESS : SEE TABLE

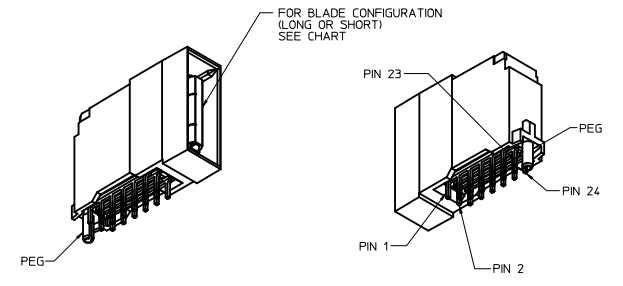


75556-15** SHOWN (W/PEG)

- NOTES:
- MATERIALS:
- HOUSING: 30% GLASS FILLED, LCP 94V-0, COLOR BLACK
- TERMINALS: COPPER ALLOY
- PLATING: PER ES-88 - SEE CHART
 - SEE CHART FOR REFERENCE DOCUMENTS
 - PLUG MATES WITH RECEPTACLE ASSEMBLIES: 75542-5000 & 75542-5001
 - MODULE IS DESIGNED FOR SOLDERING TO THE PCB
 - MODULE ASSEMBLY IS RoHS COMPLIANT
 - GATHERABILITY: ±0.65/.026 X-DIRECTION
±1.30/.051 Y-DIRECTION



75556-5100 SHOWN (W/O PEG)



75556-1500 SHOWN (W/PEG)

| REFERENCE DOCUMENTS | |
|---------------------|--|
| PS-75431-999 | PRODUCT SPECIFICATION: PERFORMANCE AND RATINGS |
| SD-75555-*** | FINAL ASSEMBLY CONFIGURATION DRAWING |

| REV | DESCRIPTION | QUALITY SYMBOLS | | GENERAL TOLERANCES (UNLESS SPECIFIED) | | DIMENSION STYLE | | SCALE | DESIGN UNITS | THIRD ANGLE PROJECTION |
|-----|---------------|-----------------|--|---------------------------------------|-------|-----------------|-------------|------------|--------------|------------------------|
| | | mm | INCH | mm | INCH | MM/IN | DATE | DATE | METRIC | PROJECTION |
| 1 | REVISED CHART | 4 PLACES | ±.005 | ±.005 | ±.005 | MM/IN | DATE | DATE | METRIC | THIRD ANGLE PROJECTION |
| 2 | DRWNG CHANG 1 | 3 PLACES | ±.008 | ±.008 | ±.008 | MM/IN | ADRNATNOL | 2005/04/19 | METRIC | THIRD ANGLE PROJECTION |
| 3 | CHKD CHANG | 2 PLACES | ±0.20 | ±.013 | ±.013 | MM/IN | CHECKED BY | DATE | METRIC | THIRD ANGLE PROJECTION |
| 4 | APPR:KHL | 1 PLACE | ±0.33 | ±.013 | ±.013 | MM/IN | APPROVED BY | DATE | METRIC | THIRD ANGLE PROJECTION |
| | | | ANGULAR | ±1/2° | ±.013 | MM/IN | APATEL | 2005/04/19 | METRIC | THIRD ANGLE PROJECTION |
| | | | DRAFT WHERE APPLICABLE MUST REMAIN WITHIN DIMENSIONS | | | | | | | |
| | | | MATERIAL NO. SEE CHART | | | | | | | |
| | | | DOCUMENT NO. SD-75556-100 | | | | | | | |
| | | | SHEET NO. 1 OF 1 | | | | | | | |