

# CM3032V121R-10

**UNCONTROLLED DOCUMENT**

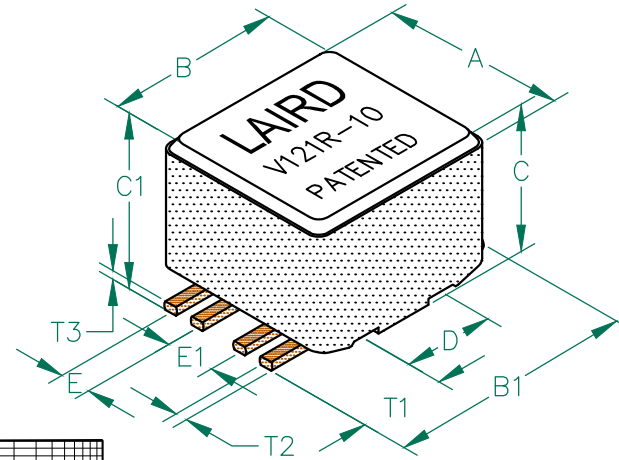
**RoHS**

**PHYSICAL DIMENSIONS:**

|                |              |               |
|----------------|--------------|---------------|
| A              | 7.62 [.300]  | + 0.13 [.005] |
| B              | 8.13 [.320]  | + 0.13 [.005] |
| B <sub>1</sub> | 10.92 [.430] | MAX           |
| C              | 5.72 [.225]  | + 0.10 [.004] |
| C <sub>1</sub> | 6.35 [.250]  | MAX           |
| D              | 4.06 [.160]  | + 0.05 [.002] |
| E              | 1.27 [.050]  | + 0.13 [.005] |
| E <sub>1</sub> | 2.03 [.080]  | + 0.13 [.005] |

**WIRE DIMENSIONS:**

|                |             |               |
|----------------|-------------|---------------|
| T <sub>1</sub> | 3.30 [.130] | + 0.38 [.015] |
| T <sub>2</sub> | 0.64 [.025] | TYP.          |
| T <sub>3</sub> | 0.38 [.015] | TYP.          |

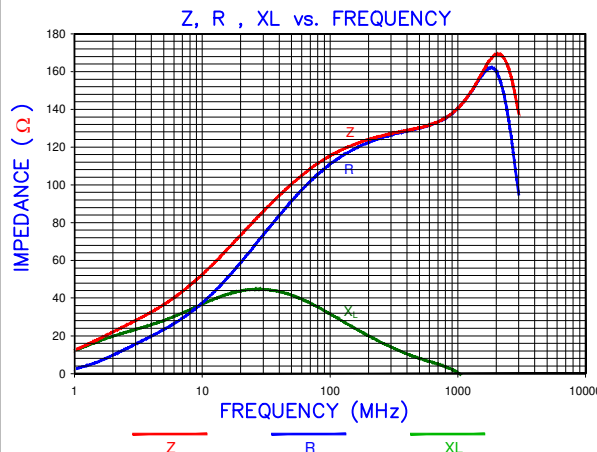
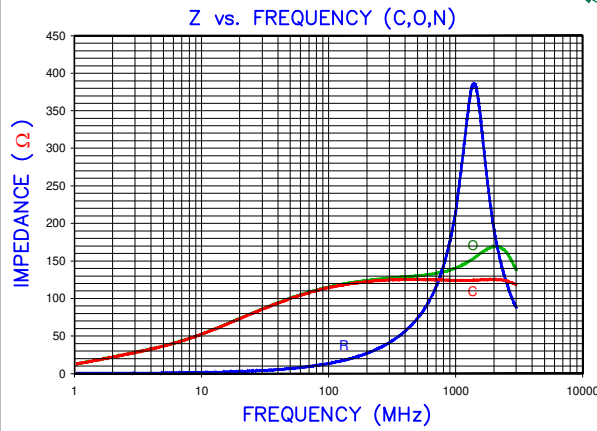


**ELECTRICAL CHARACTERISTICS:**

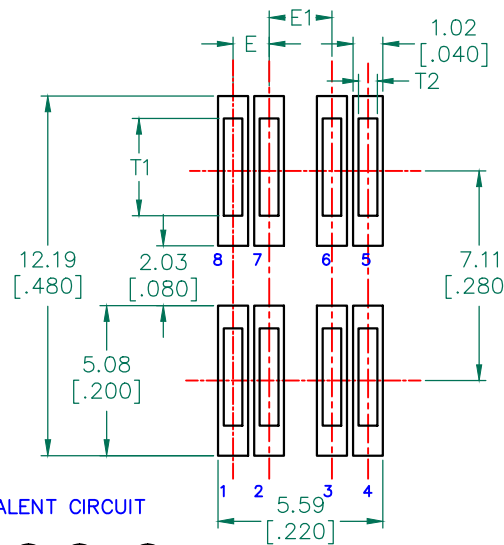
|         | Z @ 100MHz (Ω) | DCR (Ω) | Rated Current |
|---------|----------------|---------|---------------|
| Nominal | 120            |         |               |
| Minimum | 90             |         |               |
| Maximum | 150            | 0.01    | 8,000 mA      |

NOTES: UNLESS OTHERWISE SPECIFIED

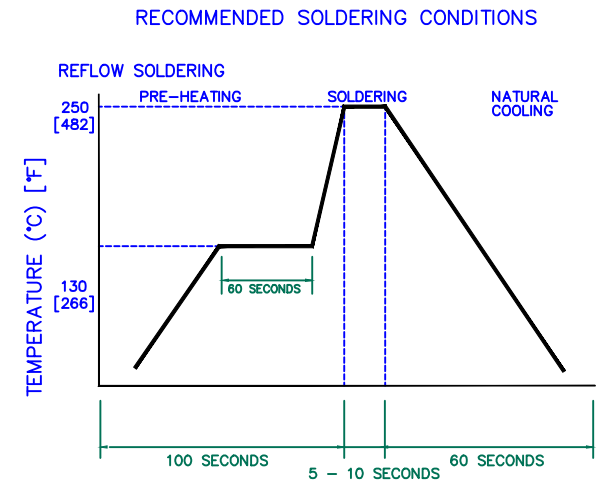
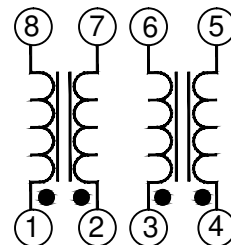
1. TAPED AND REELED per CURRENT EIA SPECIFICATIONS 13" REELS, 400 PCS/REEL.
2. COMPONENTS SHOULD BE ADEQUATELY PREHEATED BEFORE SOLDERING.
3. REF. CARRIER TAPE SPECIFICATION # CART3032-13.
4. TERMINATION FINISH IS 100% TIN.
5. THIS PART HAS NO PIN POLARITY.
6. OPERATION TEMPERATURE (INCLUDING SELF-HEATING): -40 ~ +125°C.



**LAND PATTERNS FOR REFLOW SOLDERING**



**EQUIVALENT CIRCUIT**



AGILENT E4991A RF Impedance/Material Analyzer  
HP 16194A Test Fixture. TEST REF. 3007

|                                |                                  |          |     |   |          |        |            |          |
|--------------------------------|----------------------------------|----------|-----|---|----------|--------|------------|----------|
| DIMENSIONS ARE IN mm (INCHES). |                                  |          |     | This print is the property of Laird Tech. and is loaned in confidence subject to return upon request and with the understanding that no copies shall be made without the written consent of Laird Tech. All rights to design or invention are reserved. |          |        |            |          |
| D                              | ADD NOTE 6                       | 08/30/12 | QIU | PROJECT/PART NUMBER:  |          | REV    | PART TYPE: | DRWN BY: |
| C                              | UPDATE LOGO, KAPTON LABEL ADD EC | 11/06/08 | JRK | CM3032V121R-10  |          | D      | CO-FIRE    | JRK      |
| B                              | UPDATE COMPANY LOGO              | 11/21/07 | JRK | DATE:   | 06/16/04 | SCALE: | NTS        | SHEET:   |
| A                              | ORIGINAL DRAFT                   | 06/16/04 | JRK | CAD #   |          | TOOL # | -          | 1 of 2   |
| REV                            | DESCRIPTION                      | DATE     | INT | CM3032V121R-10-D-1  |          |        |            |          |