

Tous droits strictement reserves. Reproduction ou communication a des tiers interdite sous quelque forme que ce soit sans autorisation écrite du propriétaire. Propriete de c FCI. Droits de reproduction FCI.



All rights strictly reserved. Reproduction or issue to third parties in any form whatever is not permitted without written authority from the proprietor. Property of FCI. Copyright FCI.

PRODUCT NUMBER
SEE TABLE

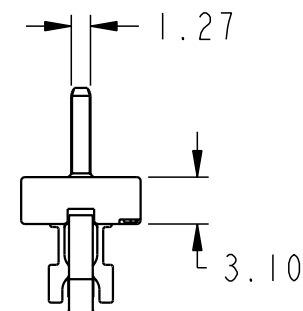
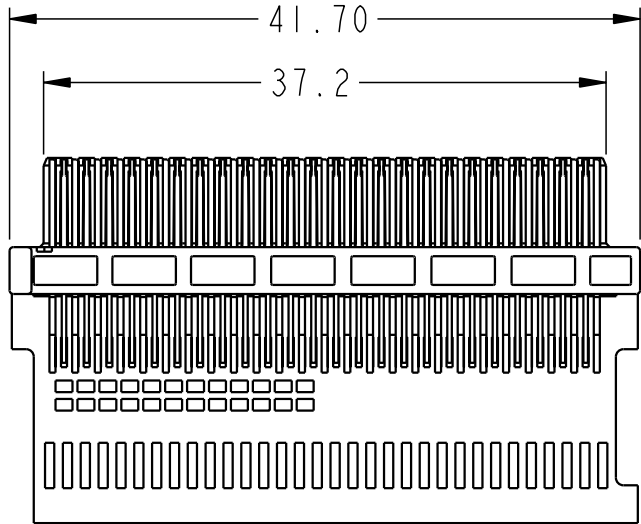
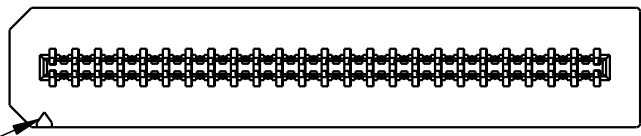
POSITION 1
INDICATOR MARK

SIGNAL POSITION 1

GROUND POSITION 1

SIGNAL POSITION 2

KEYING FEATURE



SEE NOTE 4

DATE CODE PRINTED
IN THIS AREA.

rev	ecn no	dr	date
B	V03-0796	GIP	07/21/03
C	V03-0931	GIP	08/26/03
D	V03-1098	DAI	10/15/03
E	V04-0008	DAI	01/28/04
F	V04-0484	DAI	06/08/04
G	V05-0064	TAB	03/03/05
H	V05-0528	DAI	07/01/05

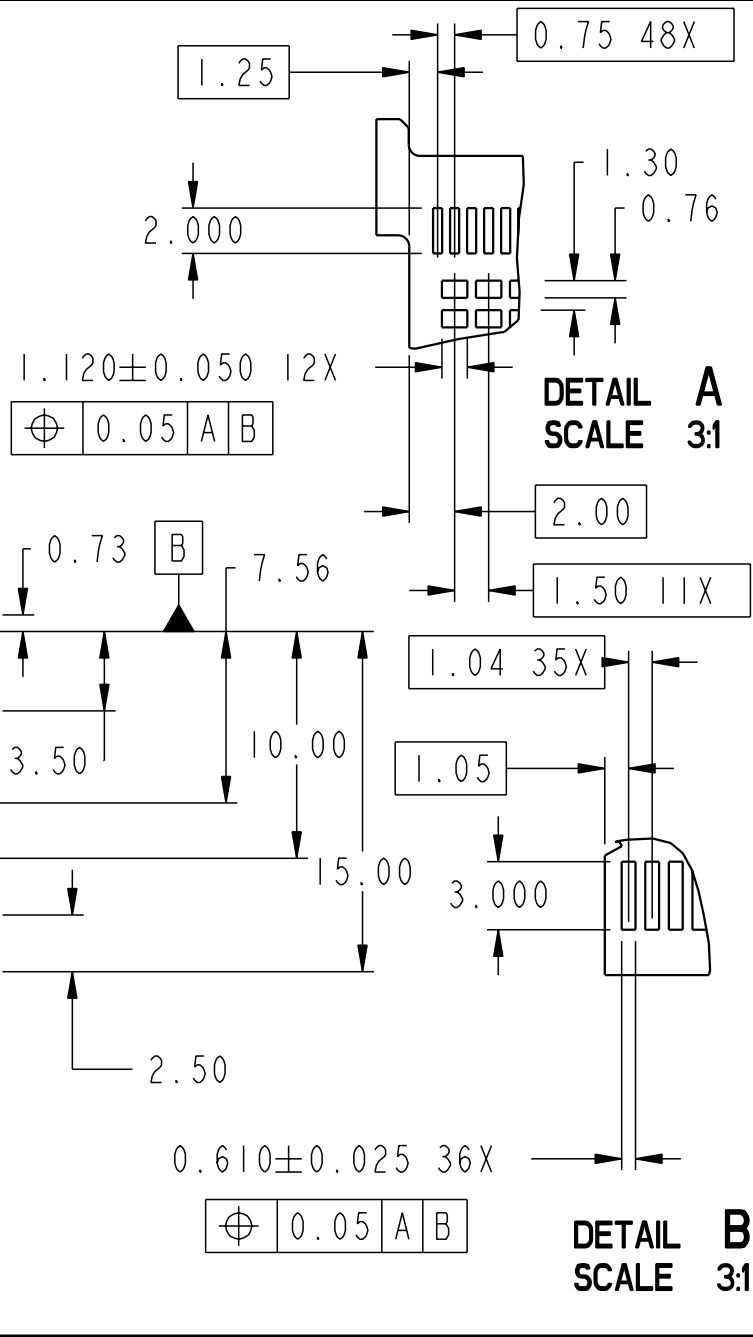
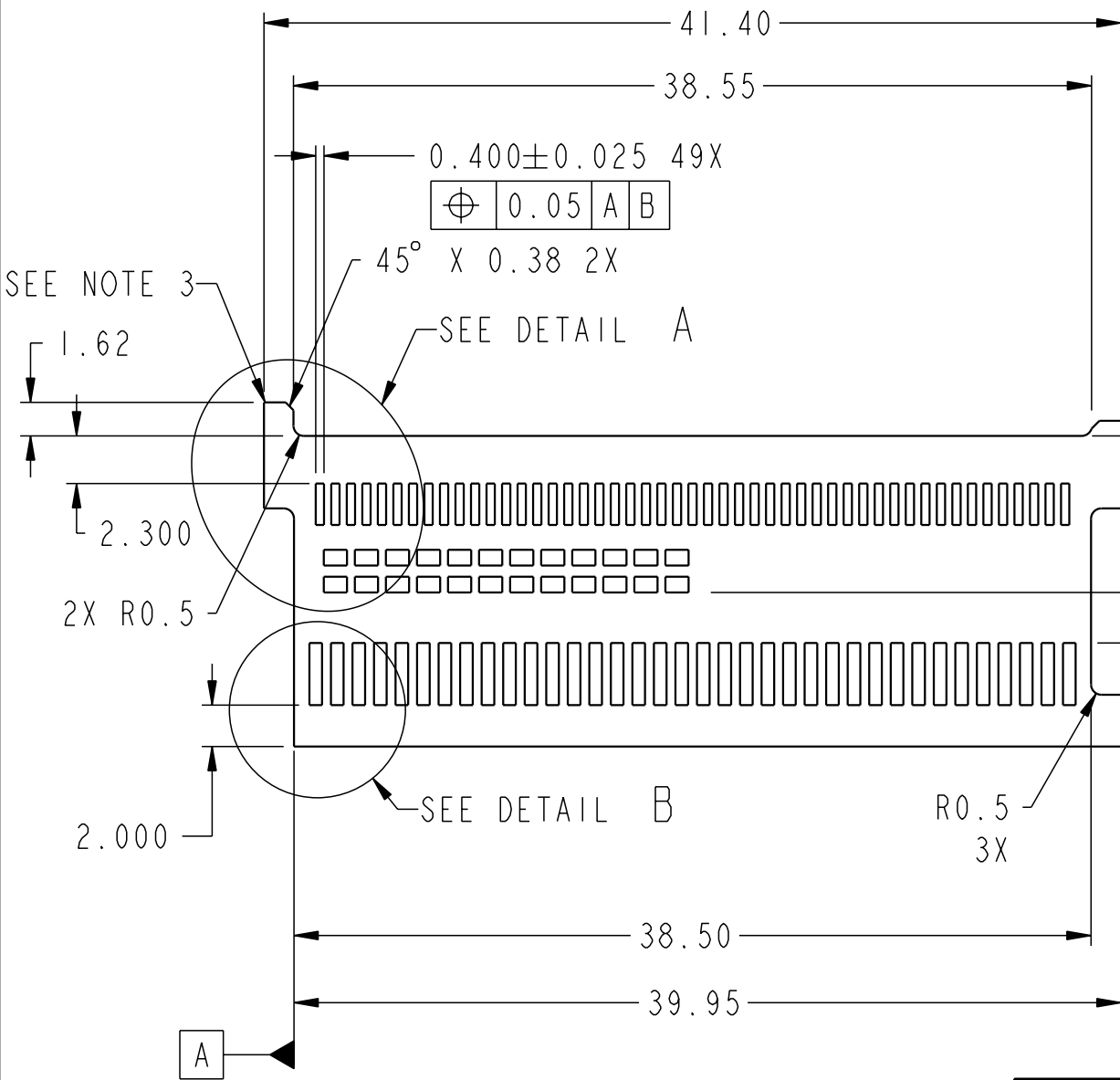
FCI www.fciconnect.com		surface <input checked="" type="checkbox"/> ASME Y14.5	tolerance ASME Y14.5	projection	MM
Dr	G.PETERS	06/02/03	Product family	EYEMAX(tm)	size A4
Eng	D.BRANN	06/02/03	Spec ref	-	Scale 1:1
Chr	G.PETERS	06/02/03	Material	SEE NOTES	ECN V05-0528
Appr	D.BRANN	06/02/03			
title			12X EQUALIZED PLUG ASS'Y. WITH PCB		Rev. H
catalog no			-		dwg no 10026694
			CUSTOMER		sheet 1 of 5

Tous droits strictement réservés. Reproduction ou communication à des tiers interdite sous quelque forme que ce soit sans autorisation écrite du propriétaire. Propriété de FCI. Droits de reproduction FCI.

A
FCI

All rights strictly reserved. Reproduction or issue to third parties in any form whatever is not permitted without written authority from the proprietor. Property of FCI. Copyright FCI.

PRODUCT NUMBER
SEE TABLE



DETAIL A
SCALE 3:1

DETAIL B
SCALE 3:1

RECOMMENDED PCB LAYOUT

SCALE 3:1

A FCI catalog no	12X EQUALIZED PLUG ASS'Y. WITH PCB	dwg no	10026694	Rev.	H
		CUSTOMER	sheet 2 of 5		

1

2

3

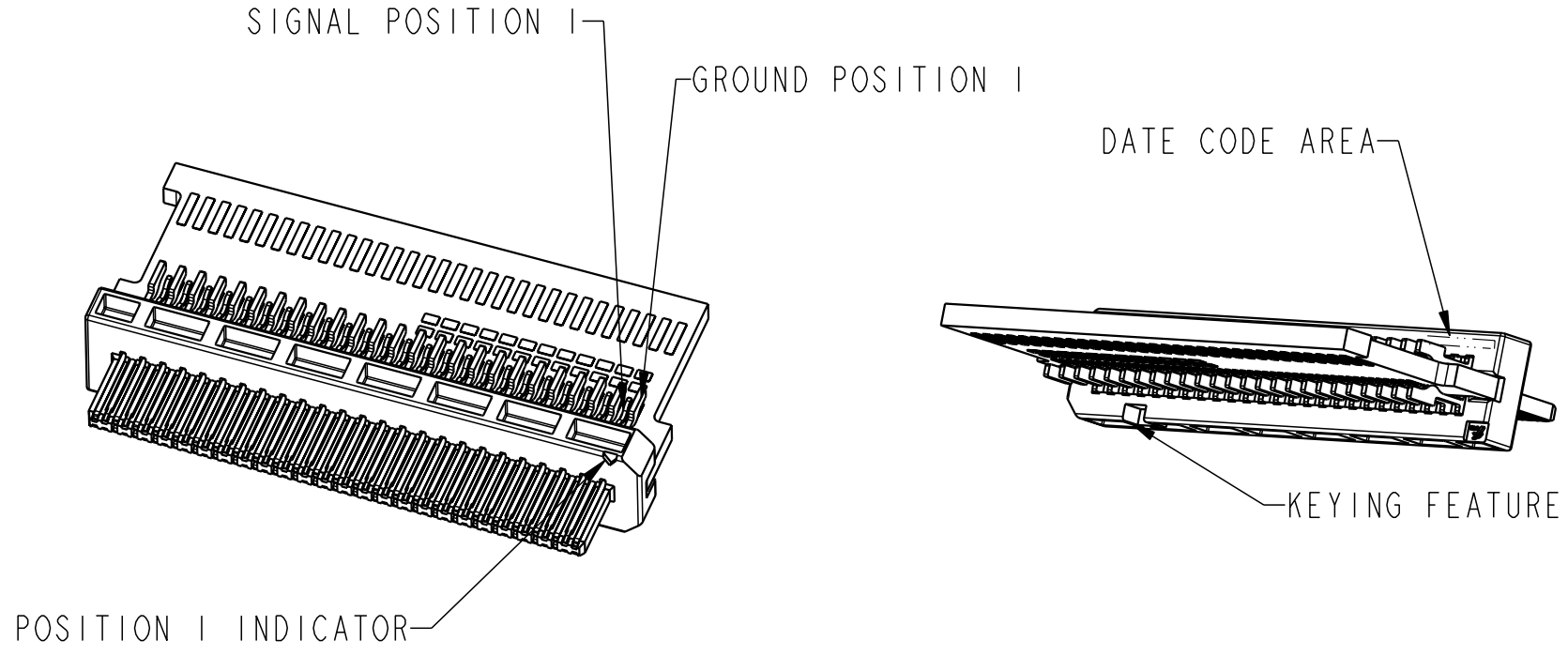
4

PRODUCT NUMBER
SEE TABLE

Tous droits strictement reserves. Reproduction ou communication a des tiers interdite sous quelque forme que ce soit sans autorisation ecrite du proprietaire. Propriete de c FCI. Droits de reproduction FCI.



All rights strictly reserved. Reproduction or issue to third parties in any form whatever is not permitted without written authority from the proprietor. Property of FCI. Copyright FCI.



A

B

C

D

title	12X EQUALIZED PLUG ASS'Y.		dwg no	10026694	Rev.	H
	WITH PCB					
catalog no			-	CUSTOMER	sheet 3 of 5	

PDM: Rev:H

STATUS: Released

4 Printed: Jul 22, 2010

NOTES:

- ① MATERIAL:
HOUSING: HIGH TEMPERATURE THERMOPLASTIC
UL 94V-0 RATED, SUITABLE FOR REFLOW SOLDER.
CONTACTS: COPPER ALLOY WITH GOLD OVER NICKEL PLATING
IN THE CONTACT AREA AND TIN/LEAD PLATING ON
THE SOLDER TAIL UNLESS THE PART NUMBER ENDS IN LF,
LEAD FREE SOLDER TAIL PLATING 2um (80u") MIN MATTE TIN OVER
1.27um (50u") MIN NICKEL UNDERPLATE
- 2. PRODUCT SPECIFICATION GS-12-209
- 3. APPLICATION SPECIFICATION: GS-20-026 FOR PADDLE CARD AND CABLE
TERMINATION DETAILS. FOR EASE OF WIRE MANAGEMENT, A P1 ASSEMBLY IS
RECOMMENDED ON ONE END OF THE CABLE AND A P2 ASSEMBLY ON THE
OTHER END.
- ④ PACKAGING SPECIFICATION GS-14-794.
PACKAGING OF LEAD FREE PRODUCTS MEETS LABELING AND PACKAGING SPECIFICATION GS-14-920.
- 5. MATES WITH LATCH-STYLE RECEPTACLE 58366 OR 58367, OR THUMBSCREW
RECEPTACLE 10009626.
- 6. PLUGS ARE ALSO AVAILABLE WITHOUT PCB 58443 OR WITH UNEQUALIZED PCB 58638.
- 7. PLUG CAN BE PURCHASED AS PART OF A KIT THAT INCLUDES THE BACKSHELLS AND
CABLE COLLARS. 58442 FOR LATCH-STYLE PLUG KITS OR 10014004 FOR THUMBSCREW
PLUG KITS.
- ⑧ IF LEAD FREE PART NUMBER, THE HOUSING WILL WITHSTAND EXPOSURE TO 260°C PEAK TEMPERATURE FOR
10 SECONDS IN A WAVE SOLDER APPLICATION WITH A 1.60mm MIN. THICK CIRCUIT BOARD.
- ⑨ LEAD FREE PRODUCTS MEET EUROPEAN UNION DIRECTIVES AND OTHER COUNTRY REGULATIONS AS DESCRIBED
IN GS-22-008.

PCB NOTES:

- 1. PADS ON BOTH SIDES OF PCB.
- 2. DIMENSIONS APPLY TO BOTH SIDES OF
PCB LOCATED FROM DATUMS A & B.
- 3. EXTENSIONS SHOULD NOT BE USED
TO LOCATE SOLDER TAILS TO SOLDER PADS,
ONLY AS AID IN ASSEMBLY BY LIMITING TOP TO
BOTTOM MOVEMENT OF THE PCB.
- ④ PCB THICKNESS: 1.57mm (.062").

Tous droits strictement reserves. Reproduction ou communication a des tiers interdite sous quelque forme que ce soit sans autorisation écrite du propriétaire. Propriete de c FCI. Droits de reproduction FCI.



All rights strictly reserved. Reproduction or issue to third parties in any form whatever is not permitted without written authority from the proprietor. Property of FCI. Copyright FCI.

title	12X EQUALIZED PLUG ASS'Y.		dwg no	10026694	Rev.	H
	WITH PCB					
catalog no			-	CUSTOMER	sheet 4 of 5	

A
B
C
D

Tous droits strictement reserves. Reproduction ou communication a des tiers interdite sous quelque forme que ce soit sans autorisation écrite du propriétaire. Propriete de c FCI. Droits de reproduction FCI.



All rights strictly reserved. Reproduction or issue to third parties in any form whatever is not permitted without written authority from the proprietor. Property of FCI. Copyright FCI.

* PRODUCT NUMBER	DESCRIPTION
10026694-001	EQUALIZED P1 PLUG ASSEMBLY WITHOUT COMPONENTS
10026694-002	EQUALIZED P1 PLUG ASSEMBLY WITH COMPONENTS
10026694-006	EQUALIZED P1 PLUG ASSEMBLY-CUSTOMER SPECIAL
10026694-101	EQUALIZED P2 PLUG ASSEMBLY WITHOUT COMPONENTS
10026694-102	EQUALIZED P2 PLUG ASSEMBLY WITH COMPONENTS
10026694-106	EQUALIZED P2 PLUG ASSEMBLY-CUSTOMER SPECIAL

*ADD LF TO END OF PART NUMBER FOR LEAD FREE SOLDER TAILS
 EXAMPLE: 10026694-001LF, SEE NOTES 1, 4, 8 AND 9

title	12X EQUALIZED PLUG ASS'Y. WITH PCB	dwg no	10026694	Rev.	H
catalog no	-	CUSTOMER	sheet 5 of 5		

A
B
C
D