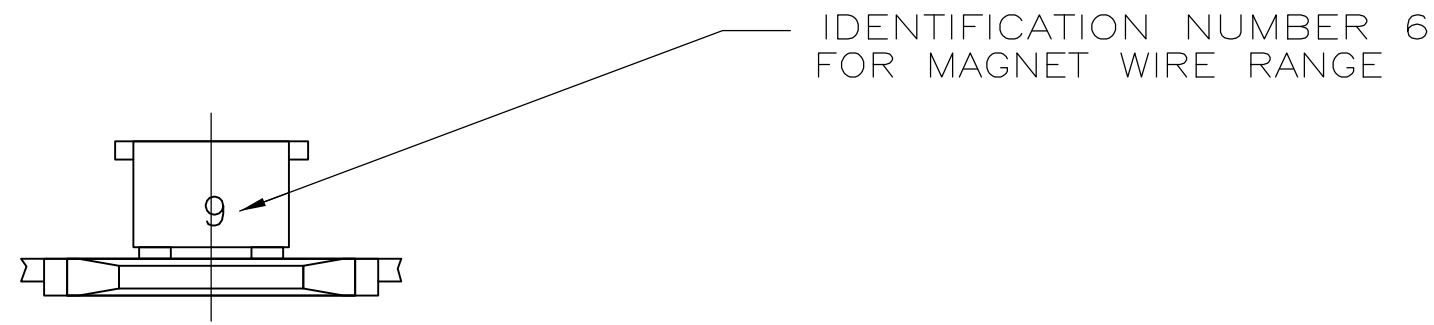
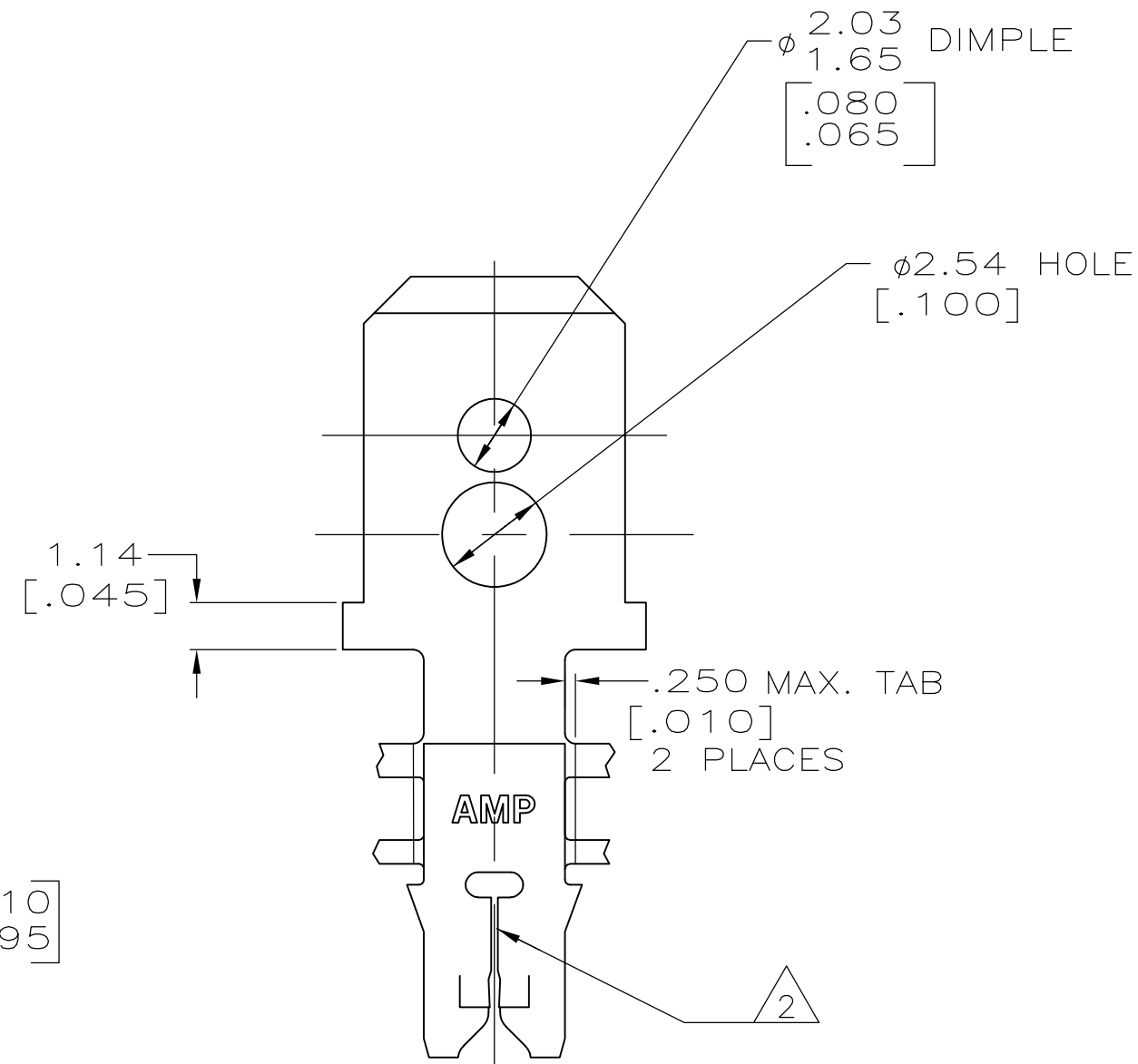
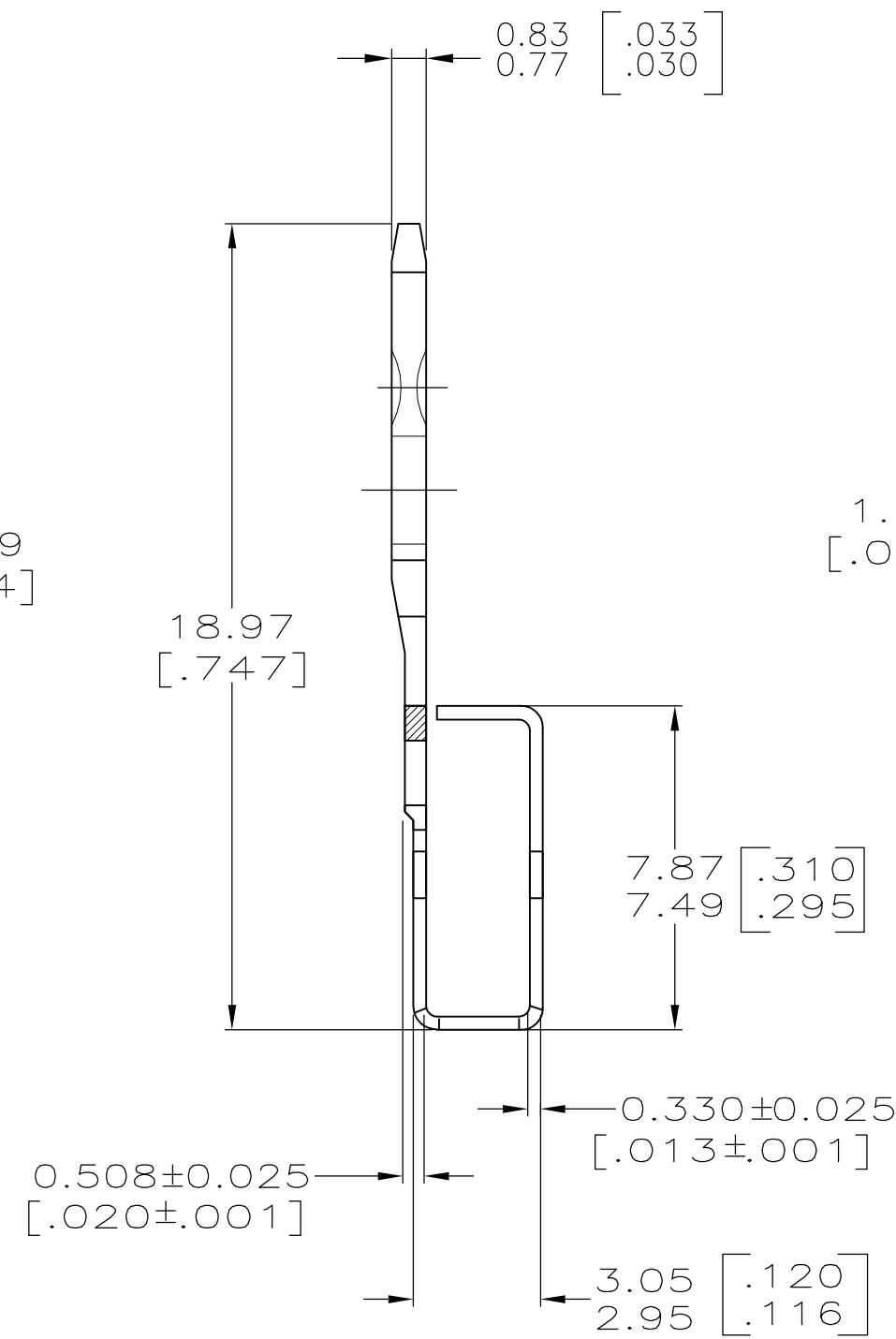
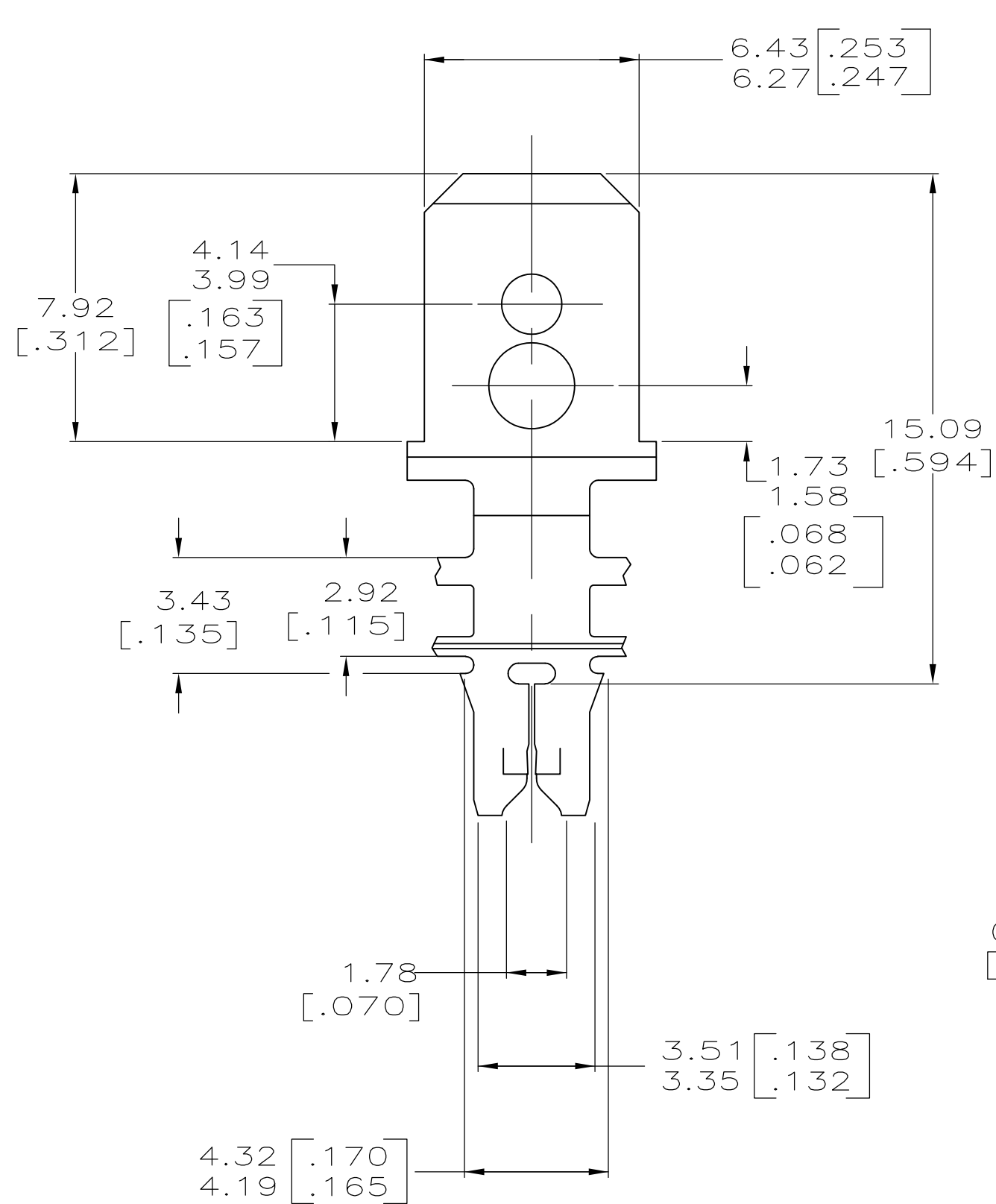


THIS DRAWING IS UNPUBLISHED. RELEASED FOR PUBLICATION
 © COPYRIGHT - By - ALL RIGHTS RESERVED.

LOC		DIST		REVISIONS			
P	LTR	DESCRIPTION		DATE	DWN	APVD	
AF	50	D1	ECR-15-005665	10AUG2015	BDA	PKS	



- CONTINUOUS STRIP ON REELS WITH TERMINALS LOCATED ON 8.38 ± 0.08 [.330 ± .003] CENTERS.
- SLOT TERMINATES EITHER A SINGLE OR DOUBLE MAGNET WIRE OF THE SAME TYPE AND SIZE, COPPER RANGE; 0.25–0.36mm [#30–#27] AWG. ALUMINUM RANGE: 0.32–0.45mm [#28–#25] AWG. ALUMINUM WIRE RANGE APPLIES FOR POST-TIN PLATED VERSIONS ONLY.
- AFTER INSERTION INTO PLASTIC HOLDER, TAB PORTION MUST BE BENT OVER 45° TO 90° OR POTTED-IN TO PREVENT PULL-OUT WHEN MATING RECEPTACLE IS DISCONNECTED.



63328-1
PART NUMBER

THIS DRAWING IS A CONTROLLED DOCUMENT.		DWN	R.GRZYBOWSKI	1MAY96	TE TE Connectivity		
DIMENSIONS: mm [INCHES]		CHK	M.S.FEHER	1MAY96			
TOLERANCES UNLESS OTHERWISE SPECIFIED:		APVD	G.PORTA	1MAY96	NAME		
0 PLC	± -	PRODUCT SPEC		TERMINAL, TAB 6.35[.250] FASTON™, MAG-MATE™			
1 PLC	± -	APPLICATION SPEC		108-2012			
2 PLC	± 0.25[.010]	WEIGHT		114-2046			
3 PLC	± -	MATERIAL		082 PRE-MILLED BRASS			
4 PLC	± -	FINISH		.002032[.000080] MIN TIN PER MIL-T-01727			
ANGLES	± -	CUSTOMER DRAWING		SCALE 6:1 SHEET 1 OF 1 REV D1			