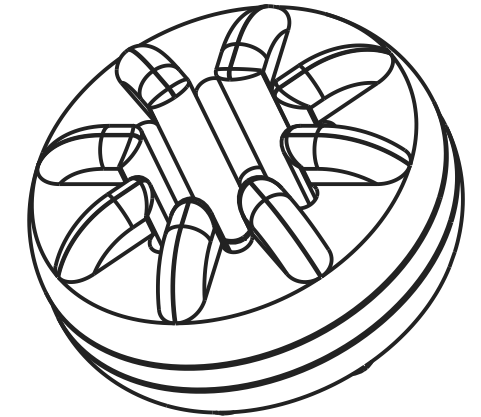
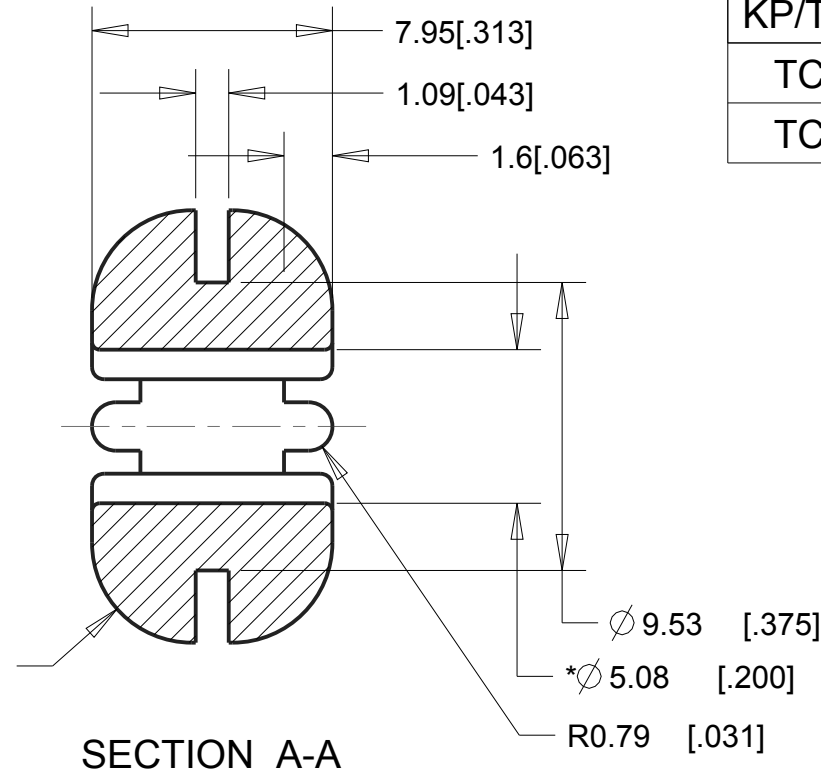
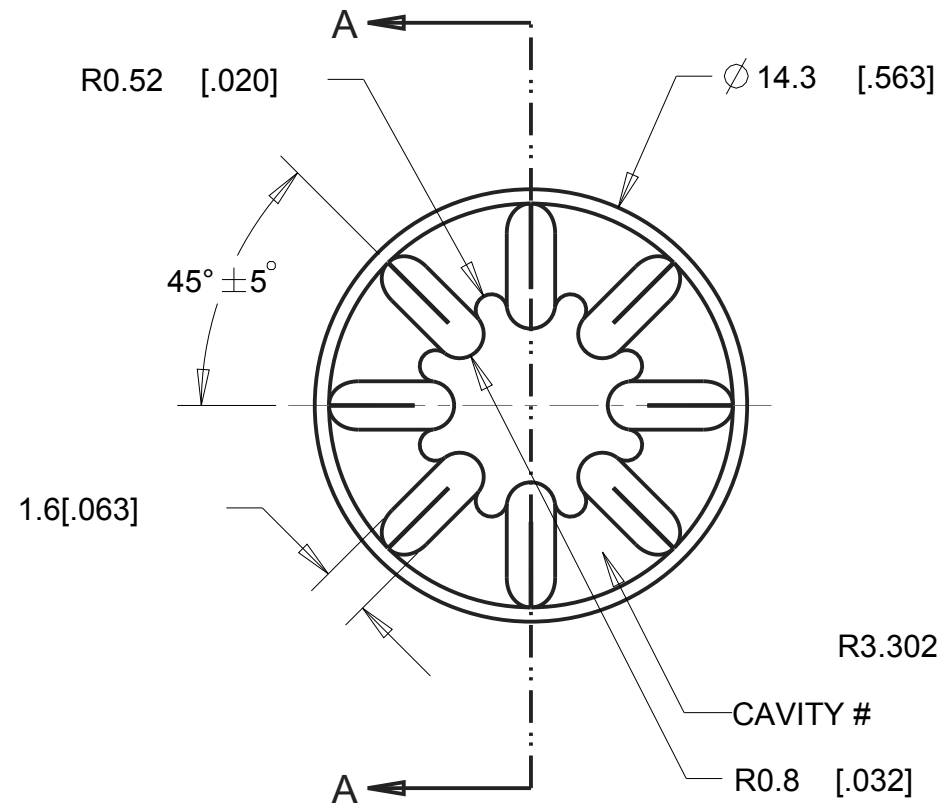




GROMMET MATERIAL	SEE PAGE
ISODAMP	1
VERSADAMP	1
ISOLOSS	2

REVISIONS				
DRAWN	REV	DESCRIPTION	DATE	APPROVED
PAM	00	ORIGINAL	12-14-03	JS
TC	01	UPDATED FORMAT AND CONSOLIDATED MATERIALS	5-5-10	JS
KP/TC	02	UPDATED FORMAT, ADDED WEIGHT	9-6-11	MS
TC	03	CHANGED -2 CALLOUT FROM 1100 TO 1105. CHANGED -3 CALLOUT FROM 1105 TO 1100.	11-02-11	MS
TC	04	Changed reference plane for the 45 deg angle callout from the side of the rib to the center. Added +/- .5 deg tol.	12-13-11	MS



G-414-V2790	V-2790
G-414-V2775	V-2775
G-414-V2750	V-2750
G-414-V2590	V-2590
G-414-V2575	V-2575
G-414-V2550	V-2550
G-414-V2525	V-2525
G-414-V2375	V-2375
G-414-V2350	V-2350
G-414-V2325	V-2325
G-414-C8012	C-8012
G-414-C8002	C-8002
G-414-C8001	C-8001
G-414-3	C-1100
G-414-2	C-1105
G-414-1	C-1002
PART NUMBER	MATERIAL

RANGE	TOL
0<D=<2 [.079]	± 0.15 [.006]
2 [.079]<D=<25 [.984]	± 0.25 [.010]
25 [.984]<D=<50 [1.969]	± 0.4 [.016]
50 [1.969]<D	± 0.6 [.024]

5. FOR ISOLOSS MATERIAL, USE THE TOLERANCE TABLE ON PAGE 2.
4. FOR VERSADAMP AND ISODAMP MATERIAL, USE THE TOLERANCE TABLE ON PAGE 1.
3. MAX DRAFT: 2° .
2. CRITICAL DIMENSIONS SHALL HAVE C<sub>p</sub>k VALUE >= 1.33 WITH ONGOING SPC DATA REQUIRED.
1. CRITICAL DIMENSIONS ARE MARKED WITH "\*\*".

NOTES:

UNLESS OTHERWISE SPECIFIED UNITS ARE: MM [IN] TOLERANCES ARE IN THE TABLE TO THE LEFT: ANGLES ± 1.0°	MATERIAL: <b>SEE TABLE ON LEFT</b>	AEARO TECHNOLOGIES LLC * a 3M company		
	ALLOWABLE FLASH: 0.12 MM [.005]	QUALITY CONTROL: MUST COMPLY WITH AEARO TECHONOLGIES LLC SUPPLIER QUALITY MANUAL REQUIREMENTS	TITLE <b>GROMMET - SYMMETRIC, INTERNALLY RIBBED</b>	
GATE: ± 0.15MM [.006]	NOTES: ANY FEATURE NOT DIMENSIONED IN PRINT MUST BE VISIBLY PRESENT, UTILIZE 3D CAD FOR CREATION	SIZE <b>B</b>	ITEM CODE	DWG NO. <b>G-414-X PAGE 1 OF 2</b>
CALC WT 0.78 GRAM REF				

1

2

3

4

REVISIONS



D

D

C

C

B

B

A

A

G-414-SL60300	SL-60300
G-414-SL50300	SL-50300
G-414-SL35300	SL-35300
G-414-SL20300	SL-20300
PART NUMBER	MATERIAL

RANGE	TOL
0<D=<10 [.394]	± 0.15 [.006]
10 [.394]<D=<20 [.787]	± 0.2 [.008]
20 [.787]<D=<50 [1.969]	± 0.25 [.010]
50 [1.969]<D=<80 [3.150]	± 0.35 [.014]
80 [3.150]<D	± 0.5%

UNLESS OTHERWISE SPECIFIED UNITS ARE: MM [IN] TOLERANCES ARE IN THE TABLE TO THE LEFT: ANGLES ±1.0°
ALLOWABLE FLASH: 0.3 MM [0.012]
GATE:
CALC WT 0.66 GRAM REF

MATERIAL: <b>SEE TABLE ON LEFT</b>
QUALITY CONTROL: MUST COMPLY WITH AEARO TECHONOLGIES LLC SUPPLIER QUALITY MANUAL REQUIREMENTS
NOTES: ANY FEATURE NOT DIMENSIONED IN PRINT MUST BE VISIBLY PRESENT, UTILIZE 3D CAD FOR CREATION

AEARO TECHNOLOGIES LLC * a 3M company		
TITLE GROMMET - SYMMETRIC, INTERNALLY RIBBED		
SIZE <b>B</b>	ITEM CODE	DWG NO. G-414-X PAGE 2 OF 2

1

2

3

4