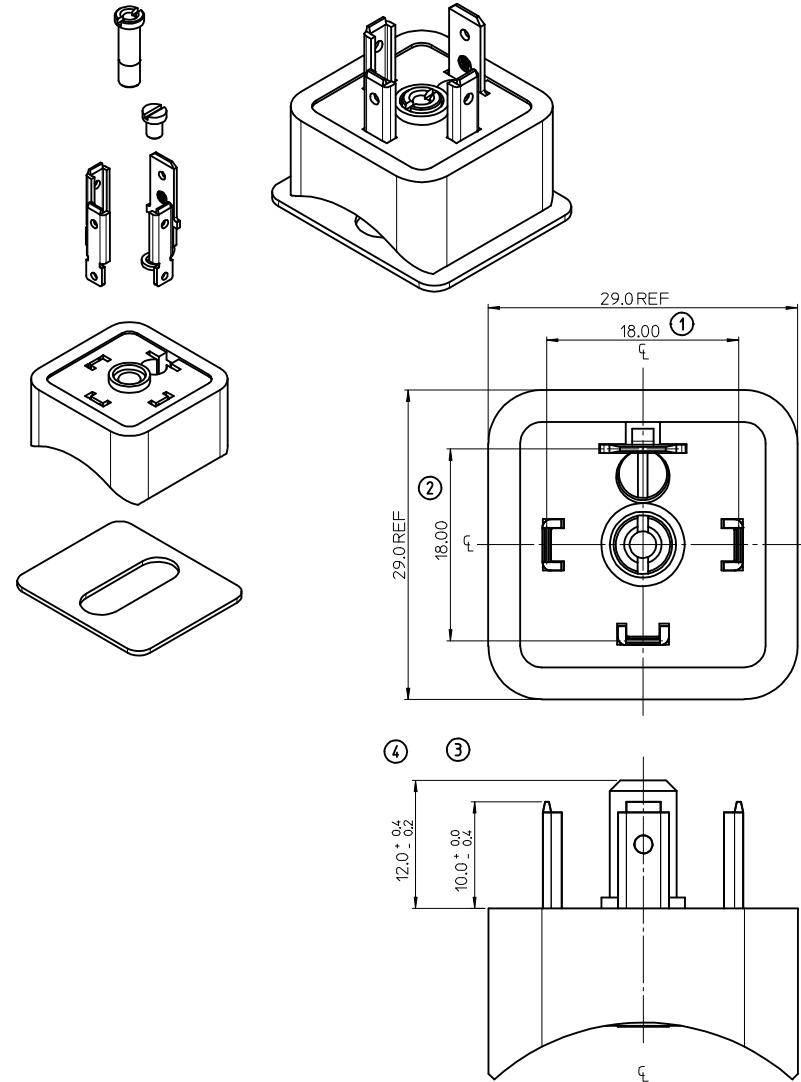


B233045N2**

SERIES _____
 B23= FORM A
 POLES _____
 2= 2 POLE & 3= 3 POLE
 CURVED BASE DIAMETER _____
 040= Ø40, 045= Ø45, 050= Ø50, 060= Ø60, 080= Ø80, 100= Ø100, 160= Ø160,
 MATERIAL AND HOUSING COLOUR _____
 N= PA6 BLACK, W= PA6 BLACK V0
 SCREW AND GASKET _____
 2= NBR FLAT GASKET & SCREWS
 4= SILICON FLAT GASKET & SCREWS
 NON STANDARD COMPONENTS _____

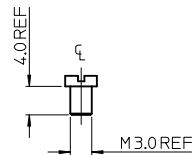
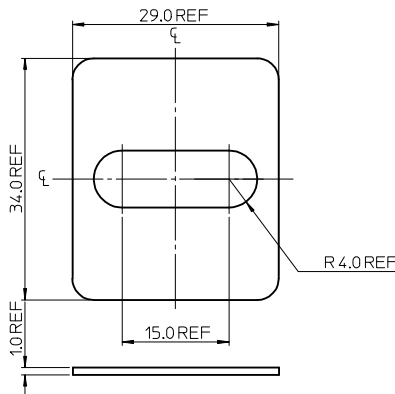
ITEM	DESCRIPTION
1	INSERT
2	EARTH SCREW
3	TERMINALS
4	HOUSING
5	GASKET



- NOTES
- PLEASE SEE TABLE FOR CURRENTLY CONFIGURED PART NUMBERS.
 FOR SPECIFIC PART NUMBERS PLEASE CONTACT SALES OR CONSULT
 THE INTELLIGENT PART NUMBERS IN THE TABLE ATTACHED.
 - FOR PACKAGING SEE PACKAGING SPEC PK-121013-B23
 - PRODUCT SPEC: SEE PS-121201-001
 - TERMINALS BENT AFTER INSERTION FOR BEND ANGLE SEE TABLE

LAST INSPECTION NUMBER 4

PART No.	mPm PART No.	DESCRIPTION	TERMINAL BEND ANGLE (°)
1210120058	B233045N2	TYPE A 3P BLACK, Ø45 NBR FLAT GASKET & SCREWS	45
1210120060	B233050N2	TYPE A 3P BLACK, Ø50 NBR FLAT GASKET & SCREWS	45
1210120052	B232060N2	TYPE A 2P BLACK, Ø60 NBR FLAT GASKET & SCREWS	45
1210120050	B232045N2	TYPE A 2P BLACK, Ø45 NBR FLAT GASKET & SCREWS	45
1210120063	B233080N2	TYPE A 3P BLACK, Ø80 NBR FLAT GASKET & SCREWS	45
1210120062	B233060N4	TYPE A 3P BLACK, Ø60 SILICON FLAT GASKET & SCREWS	45
1210120061	B233060N2	TYPE A 3P BLACK, Ø60 NBR FLAT GASKET & SCREWS	45
1210120059	B233045N4	TYPE A 3P BLACK, Ø45 SILICON FLAT GASKET & SCREWS	45
1210120057	B233040N2	TYPE A 3P BLACK, Ø40 NBR FLAT GASKET & SCREWS	45
1210120055	B232100N2	TYPE A 2P BLACK, Ø100 NBR FLAT GASKET & SCREWS	45
1210120054	B232080N2	TYPE A 2P BLACK, Ø80 NBR FLAT GASKET & SCREWS	45
1210120051	B232050N2	TYPE A 2P BLACK, Ø50 NBR FLAT GASKET & SCREWS	45
1210120049	B232040N2	TYPE A 2P BLACK, Ø40 NBR FLAT GASKET & SCREWS	45
1210130232	B233100N2	TYPE A 3P BLACK, Ø100 NBR FLAT GASKET & SCREWS	45



ORIGINAL RELEASE EC NO: IPG2014-0532 DRW:KORNOYLE 2013/09/25 CHKD:OSHEA 2013-10-23 APPR:STGERFFIN 2013/11/11	QUALITY SYMBOLS ▽=0 ▽=0	GENERAL TOLERANCES (UNLESS SPECIFIED) <table border="1"> <thead> <tr> <th></th> <th>mm</th> <th>INCH</th> </tr> </thead> <tbody> <tr> <td>4 PLACES</td> <td>± ---</td> <td>± ---</td> </tr> <tr> <td>3 PLACES</td> <td>± ---</td> <td>± ---</td> </tr> <tr> <td>2 PLACES</td> <td>± 0.1</td> <td>± ---</td> </tr> <tr> <td>1 PLACE</td> <td>± 0.2</td> <td>± ---</td> </tr> </tbody> </table> ANGULAR ± ---°		mm	INCH	4 PLACES	± ---	± ---	3 PLACES	± ---	± ---	2 PLACES	± 0.1	± ---	1 PLACE	± 0.2	± ---	DIMENSION STYLE MM ONLY	SCALE 2:1	DESIGN UNITS METRIC	THIRD ANGLE PROJECTION
				mm	INCH																
4 PLACES	± ---	± ---																			
3 PLACES	± ---	± ---																			
2 PLACES	± 0.1	± ---																			
1 PLACE	± 0.2	± ---																			
DRAWN BY JOCONNOR 2011/06/22	DATE 2011/06/22	TITLE B23 SERIES BASE	MOLEX INCORPORATED																		
DRAFT WHERE APPLICABLE MUST REMAIN WITHIN DIMENSIONS		SEE CHART	MATERIAL NO. EFOLAN 2011/07/12	DOCUMENT NO. SD-121012-005	SHEET NO. 1 OF 1																
THIS DRAWING CONTAINS INFORMATION THAT IS PROPRIETARY TO MOLEX INCORPORATED AND SHOULD NOT BE USED WITHOUT WRITTEN PERMISSION																					