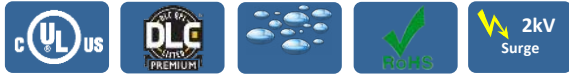


# CLLS Series 2', 3', 4' & 8' Covered Strips

<b>Project:</b>	
<b>Type:</b>	
<b>Catalog #:</b>	



## STANDARD



The CLLS series is a group of 2', 3', 4', and 8' covered strip lights, which are designed as direct replacements for fluorescent strips. The CLLS series is designed to deliver general ambient lighting in a variety of indoor settings, including schools, offices, hospitals and stores, and is the perfect choice for both new construction and retrofits. This high-efficacy luminaire provides long-life and uniform illumination, as well as standard 0-10vdc dimming capability.

## FEATURES

- Available in 3500k (warm/neutral white), 4000k (neutral white) and 5000k (cool white) color temperatures.\*
- Long-life LEDs provide 122,000 hours of operation with at least 70% of initial lumen output ( $L_{70}$ ).\*\*
- CLLS2-20 provides 2,348 luminaire lumens (117 lumens per watt, LPW) at 3500k; 2,600 luminaire lumens (130 LPW) at 4000k; and 2,432 luminaire lumens (122 LPW) at 5000k.\*
- CLLS3-25 provides 3,129 luminaire lumens (125 LPW) at 3500k; 3,250 luminaire lumens (130 LPW) at 4000k; and 3,334 luminaire lumens (133 LPW) at 5000k.\*
- CLLS4-32 provides 3,811 luminaire lumens (119 LPW) at 3500k; 4,224 luminaire lumens (132 LPW) at 4000k; and 4,256 luminaire lumens (133 LPW) at 5000k.\*
- CLLS8-65 provides 8,450 luminaire lumens (130 LPW) at 3500k; 8,580 luminaire lumens (132 LPW) at 4000k; and 8,645 luminaire lumens (133 LPW) at 5000k.\*
- Uniform illumination with no visible LED pixelation.
- Universal 120-277 AC voltage (50-60Hz) is standard.
- 0-10vdc dimming capability is standard.
- Power factor > 0.90.
- Total harmonic distortion < 20%.
- Color rendering index > 80.
- Steel housing and acrylic lens.
- Easy installation in new construction or retrofit.

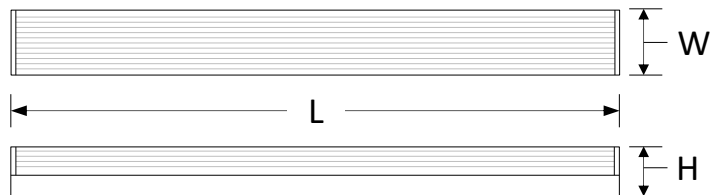
\* Contact factory for other color temperatures and lumen packages.

\*\*  $L_{70}$  hours are IES TM-21-11 calculated hours.

## WARRANTY & LISTINGS

- cULus approved for damp locations (-20° C to 50° C / -4° F to 122° F).
- DLC premium approved.
- Complies with FCC Part 15, Class A.
- Complies with IEEE C.62.41-1991, Class A input transient surge protection (2.5kV).
- Complies with IEC 61000-4-2 level 2 (4kV) electrostatic discharge (ESD).
- Complies with RoHS (Restriction on Hazardous Substances) requirements.
- 5-year warranty of all electronics and housing.

## DIMENSIONS



	CLLS2	CLLS3	CLLS4	CLLS8
<b>Length- L</b>	26"	37"	48"	96"
<b>Width - W</b>	3 3/8"	3 3/8"	3 3/8"	3 3/8"
<b>Height - H</b>	3 1/2"	3 1/2"	3 1/2"	3 1/2"
<b>Weight (lbs.)</b>	4.1	5.1	6.2	13.8

## ORDERING INFORMATION

Model	Color Temperature	Luminaire Lumens	Luminaire Watts	Lumens / Watt
CLLS2-2035	3500k	2,348	20	117
CLLS2-2040	4000k	2,600	20	130
CLLS2-2050	5000k	2,432	20	122
CLLS3-2535	3500k	3,129	25	125
CLLS3-2540	4000k	3,250	25	130
CLLS3-2550	5000k	3,334	25	133
CLLS4-3235	3500k	3,811	32	119
CLLS4-3240	4000k	4,224	32	132
CLLS4-3250	5000k	4,256	32	133
CLLS8-6535	3500k	8,450	65	130
CLLS8-6540	4000k	8,580	65	132
CLLS8-6550	5000k	8,645	65	133

# CLLS Series 2', 3', 4' & 8' Covered Strips

## ELECTRICAL

Model	Color Temp.	CRI <sup>1</sup>	Luminaire Lumens	Luminaire Watts	Lumens Per Watt	Input Voltage <sup>2</sup>	Input Current (A)			Power Factor	THD <sup>3</sup>	L <sub>70</sub> Hours <sup>4</sup>
							120V	240V	277V			
CLLS2-2035	3500k	> 80	2,348	20	117	120-277	0.17	0.08	0.07	> 90%	< 20%	122,000
CLLS2-2040	4000k	> 80	2,600	20	130	120-277	0.17	0.08	0.07	> 90%	< 20%	122,000
CLLS2-2050	5000k	> 80	2,432	20	122	120-277	0.17	0.08	0.07	> 90%	< 20%	122,000
CLLS3-2535	3500k	> 80	3,129	25	125	120-277	0.21	0.10	0.09	> 90%	< 20%	122,000
CLLS3-2540	4000k	> 80	3,250	25	130	120-277	0.21	0.10	0.09	> 90%	< 20%	122,000
CLLS3-2550	5000k	> 80	3,334	25	133	120-277	0.21	0.10	0.09	> 90%	< 20%	122,000
CLLS4-3235	3500k	> 80	3,811	32	119	120-277	0.27	0.13	0.12	> 90%	< 20%	122,000
CLLS4-3240	4000k	> 80	4,224	32	132	120-277	0.27	0.13	0.12	> 90%	< 20%	122,000
CLLS4-3250	5000k	> 80	4,256	32	133	120-277	0.27	0.13	0.12	> 90%	< 20%	122,000
CLLS8-6535	3500k	> 80	8,450	65	130	120-277	0.54	0.27	0.23	> 90%	< 20%	122,000
CLLS8-6540	4000k	> 80	8,580	65	132	120-277	0.54	0.27	0.23	> 90%	< 20%	122,000
CLLS8-6550	5000k	> 80	8,645	65	133	120-277	0.54	0.27	0.23	> 90%	< 20%	122,000

<sup>1</sup> Color rendering index.

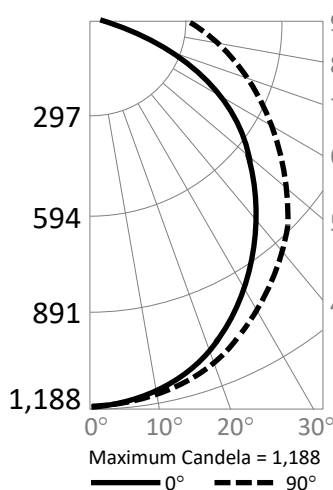
<sup>2</sup> All 50-60Hz.

<sup>3</sup> Total harmonic distortion.

<sup>4</sup> L<sub>70</sub> refers to the number of hours at which lumen output declines to 70% of the initial level. L<sub>70</sub> hours are IES TM-21-11 calculated hours.

## PHOTOMETRIC DATA

Model: **CLLS4-3250 (4,256 lumens)**



### Candlepower Summary

	0°	90°
0°	1,188	1,188
10°	1,154	1,169
20°	1,064	1,112
30°	926	1,027
40°	758	921
50°	574	794
60°	391	667
70°	216	540
80°	70	427
90°	5	328

### Zonal Lumen Summary

Zone	Lumens	% Fixture
0° – 10°	127	3.0%
0° – 20°	490	11.5%
0° – 30°	1,035	24.3%
0° – 40°	1,689	39.7%
0° – 50°	2,370	55.7%
0° – 60°	3,004	70.6%
0° – 70°	3,541	83.2%
0° – 80°	3,957	93.0%
0° – 90°	4,256	100.0%
90° – 180°	0	0%
0° – 180°	4,256	100.0%

### Cone of Light

