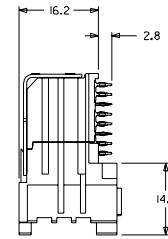
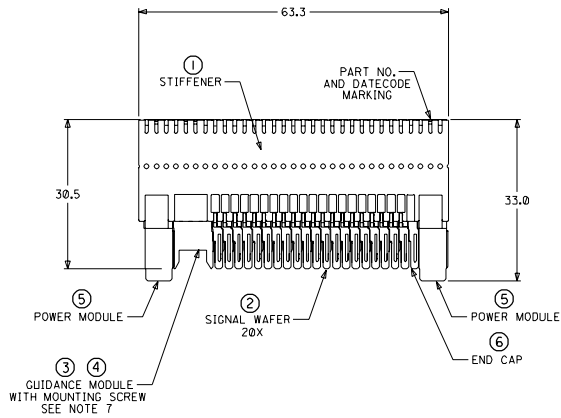
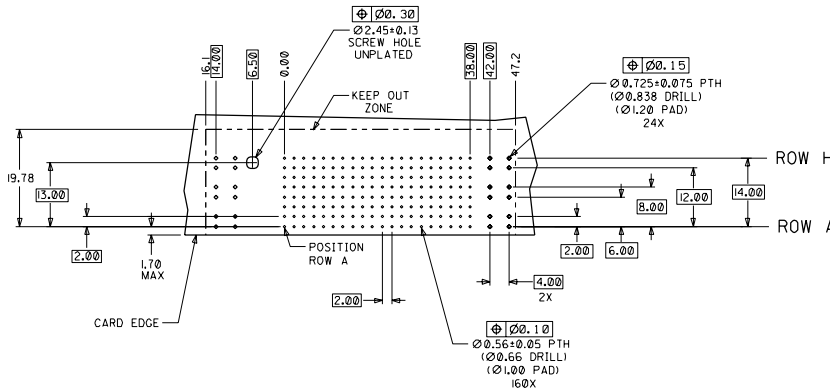
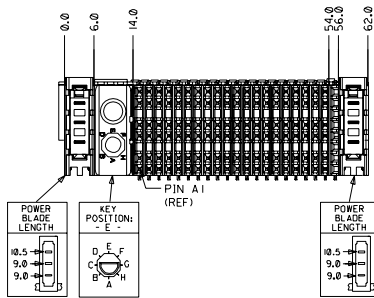


CUSTOMER: NISHAN



- NOTES: (UNLESS OTHERWISE SPECIFIED)
- MATERIALS: HOUSING - LIQUID CRYSTAL POLYMER (LCP), GLASS-FILLED, UL94V-0, BLACK.
TERMINALS - HIGH PERFORMANCE COPPER ALLOY.
STIFFENER - STAINLESS STEEL.
 - FINISH: SELECTIVE GOLD (Au) IN CONTACT AREA, 0.00076mm MINIMUM THICKNESS; SELECTIVE TIN/LEAD (Sn/Pb) ON PCB TAILS, NICKEL (Ni) OVERALL.
 - REFER TO MOLEX PRODUCT SPECIFICATION PS-74031-999 FOR PERFORMANCE SPECIFICATIONS.
 - REFER TO MOLEX DOCUMENT SD-74681-002 FOR ADDITIONAL DETAIL ON THE HSD SIGNAL WAFER.
 - REFER TO MOLEX DOCUMENT SD-74037-006 FOR ADDITIONAL DETAIL ON THE GUIDANCE MODULE.
 - REFER TO MOLEX DOCUMENT SD-74026-002 FOR ADDITIONAL DETAIL ON THE POWER MODULE.
 - MOUNTING SCREWS WILL BE BAGGED WITH EACH CONNECTOR.
 - PARTS ARE PACKAGED IN TUBES PER PK-70873-5041.



DAUGHTERCARD HOLE PATTERN (CONNECTOR SIDE)

ITEM	PART NUMBER	DESCRIPTION	QTY
1	74046-0063	STIFFENER	1
2	74681-0001	HSD8 WAFER	20
3	74037-8005	POLARIZING/GUIDE MODULE	1
4	73726-0000	GUIDE MODULE MNTG SCREW	1
5	74026-8223	POWER MODULE	2
6	74038-1001	END CAP	1

INITIAL RELEASE EC NO. UDT2002-0345 DRAWN ATP 01/08/27 CHK LAURX 01/08/27 APPR. BIXLER 01/08/27	QUALITY SYMBOLS MAJOR CRITICAL	GENERAL TOLERANCES UNLESS SPECIFIED	SCALE 2:1	DESIGN UNITS mm	DIMENSIONS: mm	SHT	REV	
		4 PLACES ±0.00	3 PLACES ±0.00	2 PLACES ±0.00	1 PLACE ±0.00	THIRD ANGLE PROJECTION	REVISION ON CAD ONLY	
		DRAWN BY & DATE ATP 01/08/27		TITLE 8 ROW HSD DAUGHTERCARD ASSEMBLY SALES DRAWING		MATERIAL NO. 746800049		
		CHECKED BY & DATE LAURX 01/08/27		APPROVED BY & DATE BIXLER 01/08/27		DRAWING NO. SD-74680-049		
ANGULAR ± 2°		CAD FILENAME		DRAWING NO. SD-74680-049		SHEET NO. 1 OF 1		
DRAFT WHERE APPLICABLE MUST REMAIN WITHIN DIMENSIONS		THIS DRAWING CONTAINS INFORMATION THAT IS PROPRIETARY TO MOLEX INCORPORATED AND SHOULD NOT BE USED WITHOUT WRITTEN PERMISSION.						