

Base strip - IPCV 16/ 9-GF-10,16 - 1969849

Please be informed that the data shown in this PDF Document is generated from our Online Catalog. Please find the complete data in the user's documentation. Our General Terms of Use for Downloads are valid (<http://phoenixcontact.com/download>)



Header, Nominal current: 76 A, Rated voltage (III/2): 1000 V, Number of positions: 9, Pitch: 10.16 mm, Color: green, Contact surface: Silver, Assembly: Soldering


The figure shows a 5-pos. version of the product

Product Features

- Integrated double steel spring
- Inverted vertical IPC 16 headers for implementing a touch-proof PCB output or a PCB/PCB connection (in combination with PC 6-16 base strips)
- CS-IPC 16/6 for anti-rotation protection during assembly



Key commercial data

| | |
|--------------------------------------|---|
| Packing unit | 1 pc |
| Minimum order quantity | 50 pc |
| GTIN |  4 017918 946852 |
| Weight per Piece (excluding packing) | 38.92 GRM |
| Custom tariff number | 85366990 |
| Country of origin | Poland |

Technical data

Dimensions

| | |
|----------------|-----------|
| Length | 13.6 mm |
| Pitch | 10.16 mm |
| Dimension a | 81.28 mm |
| Pin dimensions | 0,8 x 1,2 |
| Pin spacing | 10.16 mm |
| Hole diameter | 1.7 mm |

Base strip - IPCV 16/ 9-GF-10,16 - 1969849

Technical data

General

| | |
|---|---------------|
| Range of articles | IPCV 16/..-GF |
| Insulating material group | I |
| Rated surge voltage (III/3) | 8 kV |
| Rated surge voltage (III/2) | 8 kV |
| Rated surge voltage (II/2) | 8 kV |
| Rated voltage (III/3) | 1000 V |
| Rated voltage (III/2) | 1000 V |
| Rated voltage (II/2) | 1000 V |
| Nominal current I _N | 76 A |
| Maximum load current | 76 A |
| Insulating material | PA |
| Inflammability class according to UL 94 | V0 |
| Color | green |
| Number of positions | 9 |

Classifications

eCl@ss

| | |
|------------|----------|
| eCl@ss 4.0 | 272607xx |
| eCl@ss 4.1 | 27260701 |
| eCl@ss 5.0 | 27260701 |
| eCl@ss 5.1 | 27260701 |
| eCl@ss 6.0 | 27260704 |
| eCl@ss 7.0 | 27440402 |
| eCl@ss 8.0 | 27440402 |

ETIM

| | |
|----------|----------|
| ETIM 3.0 | EC001121 |
| ETIM 4.0 | EC002637 |
| ETIM 5.0 | EC002637 |

UNSPSC

| | |
|---------------|----------|
| UNSPSC 6.01 | 30211810 |
| UNSPSC 7.0901 | 39121409 |
| UNSPSC 11 | 39121409 |
| UNSPSC 12.01 | 39121409 |
| UNSPSC 13.2 | 39121409 |

Base strip - IPCV 16/ 9-GF-10,16 - 1969849

Approvals

Approvals


Approvals

UL Recognized / SEV / cUL Recognized / CCA / GOST / GOST / cULus Recognized


Ex Approvals

Approvals submitted

Approval details

| | | | |
|--|-------|-------|-------|
| UL Recognized  | | | |
| | B | C | D |
| Nominal current IN | 66 A | 66 A | 5 A |
| Nominal voltage UN | 300 V | 300 V | 600 V |

| | |
|--------------------|--------|
| SEV | |
| | |
| Nominal current IN | 76 A |
| Nominal voltage UN | 1000 V |

| | | | |
|--|-------|-------|-------|
| cUL Recognized  | | | |
| | B | C | D |
| Nominal current IN | 66 A | 66 A | 5 A |
| Nominal voltage UN | 300 V | 300 V | 600 V |

| | |
|--------------------|--------|
| CCA | |
| | |
| Nominal current IN | 76 A |
| Nominal voltage UN | 1000 V |

Base strip - IPCV 16/ 9-GF-10,16 - 1969849

Approvals

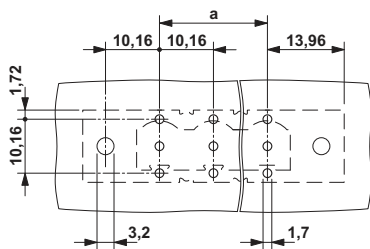
GOST

GOST

cULus Recognized

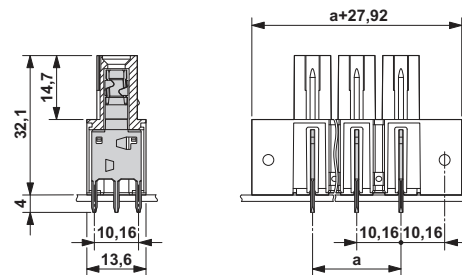
Drawings

Drilling diagram



The illustration shows the 3-pos. version

Dimensioned drawing



The illustration shows the 3-pos. version