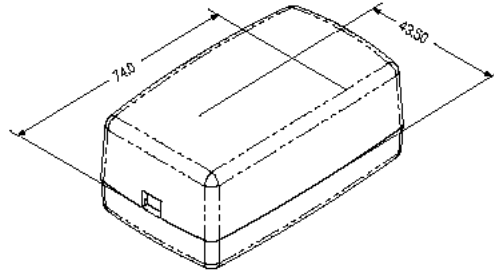
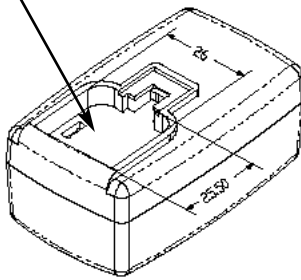


PROPRIETARY INFORMATION:
 PROPRIETARY OF GLOBTEK, INC. ANY REPRODUCTION, DISCLOSURE OR USE OF THIS DRAWING, IN WHOLE OR IN PART, IS HEREBY PROHIBITED EXCEPT AS SPECIFIED IN WRITING BY GLOBTEK, INC.

REVISION			
REV	DESCRIPTION	DATE	APPROVED
A	INITIAL RELEASE, RFS.6842, DMR	08/11/05	DMR
B	ADD PACKING, ROHS, RFS. 11823, MS	08/22/07	HM
C	ADD CARTON SIZE PACKING, RFS. 12513, JS	11/26/07	HM
D	REVISE DESCRIPTION, I/P CONNECTOR, RFS. 18363, SO	03/30/10	HM
E	REVISE DESCRIPTION TO INCLUDE 'DUMMY GROUND', REV. 25704, BS	11/14/14	HM



STANDARD OPTION SHIPS WITHOUT AC PINS INSTALLED

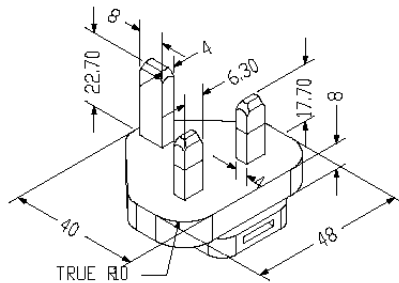


1. MATERIAL

HIGH IMPACT PLASTIC, 94V0 POLYCARBONATE, NON-VENTED, COLOR BLACK

2. INPUT CONNECTOR:

UK BS 1363 CONFIGURATION: UK 2 PINS + 'DUMMY GROUND', CLASS II



P/N: Q-UK(R)
 UNITED KINGDOM
 HONG KONG
 SINGAPORE

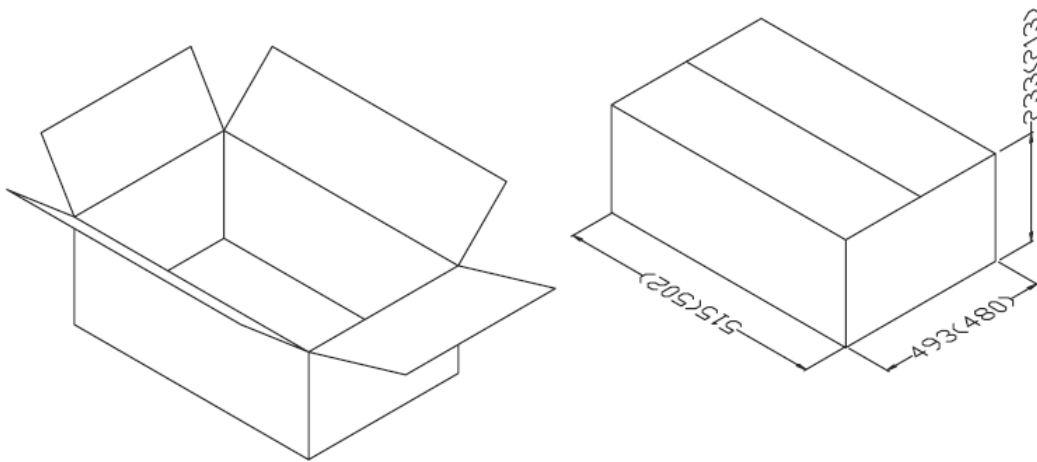
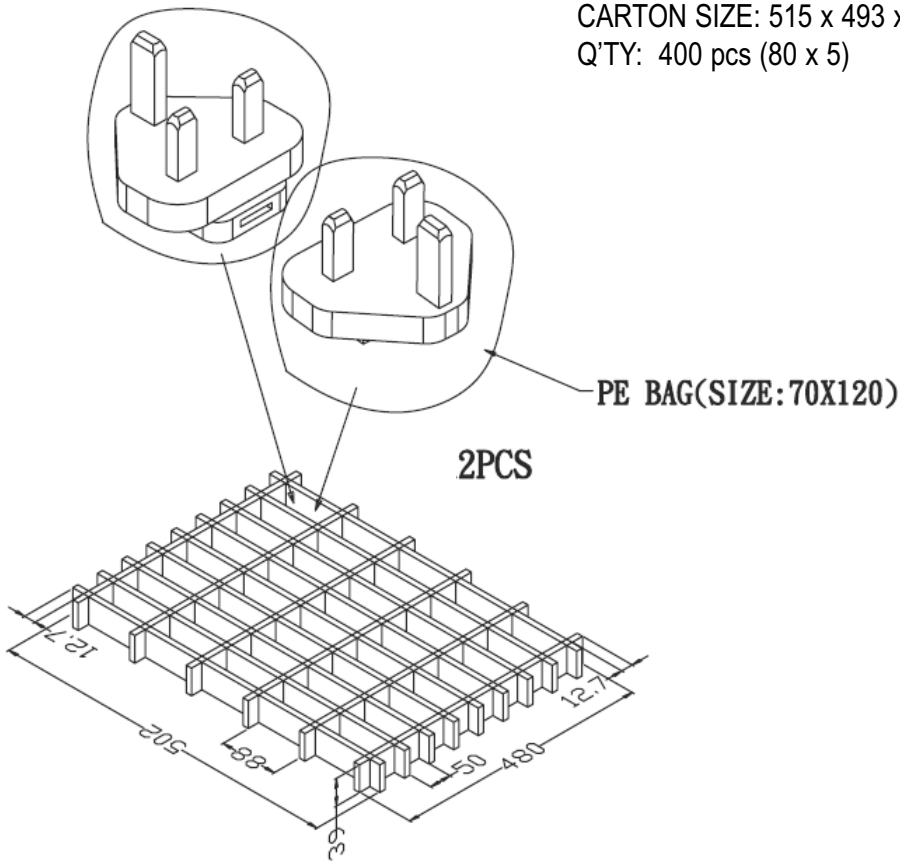
RELEASED
 By N.Frost at 4:22 pm, Nov 17, 2014

Foot Note: Globtek Inc. will not be liable for the safety and performance of these power supplies if unauthorized access and repair occurs. End user should consult applicable UL, CSA or EN standards for proper installation instructions.	DASH NO.	PART NO	REV.	DESCRIPTION	NOTES	
	TABULATION BLOCK					
	INIT.BY: DMR		DATE: 08/11/05	TOLERANCES: DECIMALS: .xx +/- 0.1 ANGULAR: +/- 1' .xxx +/- .005	GlobTek, Inc. www.globtek.com 186 Veterans Dr. Northvale, NJ 07647 Tel. 201-784-1000 Fax 201.784.0111	
	DRAWN: NF		DATE: 08/11/05	MILLIMETERS: .xx +/- 0.3 ANGULAR: .xxx +/- .013		
APRVD : DMR	DATE: 08/11/05	FSCN No.: G, N	SIZE A	MODEL NO: N/A	REV. E	
		SCALE: NONE		PART NO: Q-UK(R)	SHEET 1 OF 2	

PROPRIETARY INFORMATION:
 PROPRIETARY OF GLOBTEK, INC. ANY REPRODUCTION, DISCLOSURE OR
 USE OF THIS DRAWING, IN WHOLE OR IN PART, IS HEREBY
 PROHIBITED EXCEPT AS SPECIFIED IN WRITING BY GLOBTEK, INC.

3. PACKING:

CARTON SIZE: 515 x 493 x 233
 Q'TY: 400 pcs (80 x 5)



 GlobTek, Inc. www.globtek.com		186 Veterans Dr. Northvale, NJ 07647 Tel. 201-784-1000 Fax 201.784.0111	
DWG TITLE: UK INTERCHANGEABLE INPUT BLADES			
MODEL NO: N/A			REV. E
PART NO: Q-UK(R)			SHEET 2 OF 2