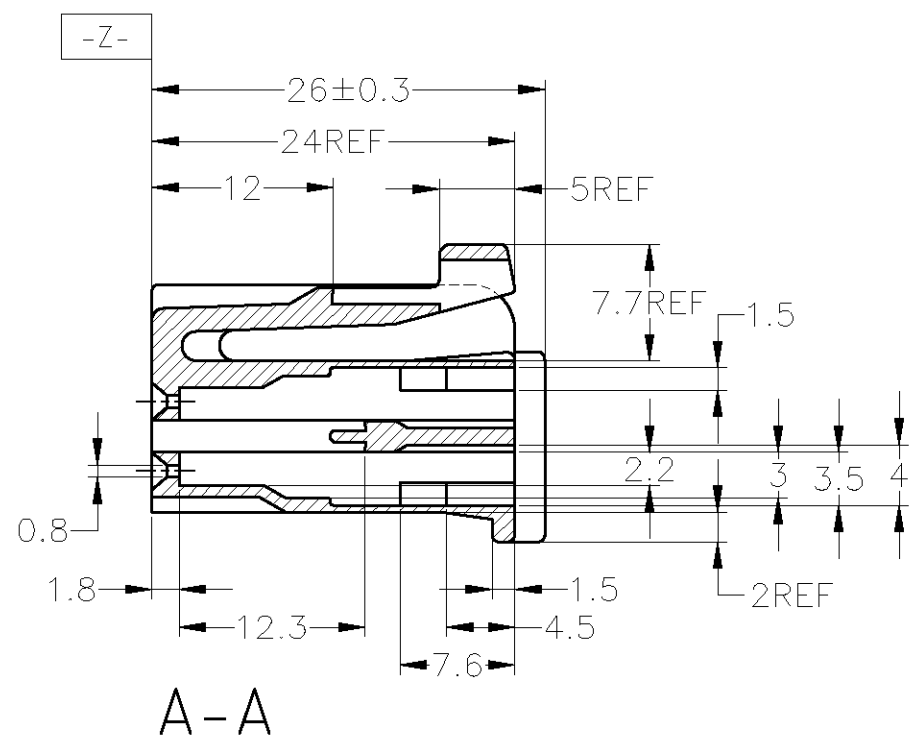
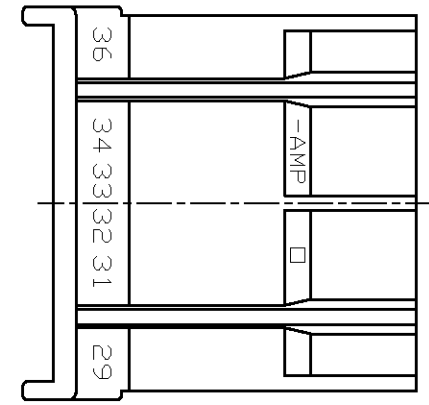
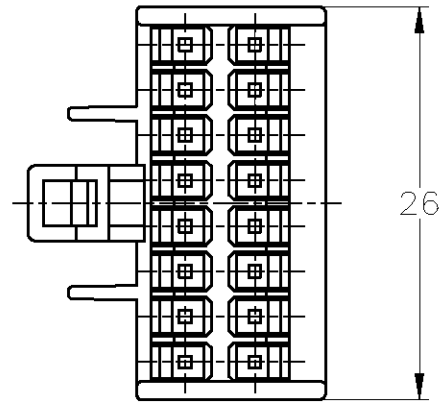
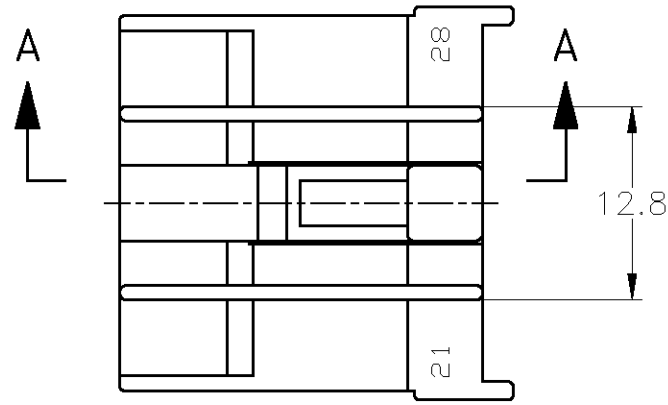
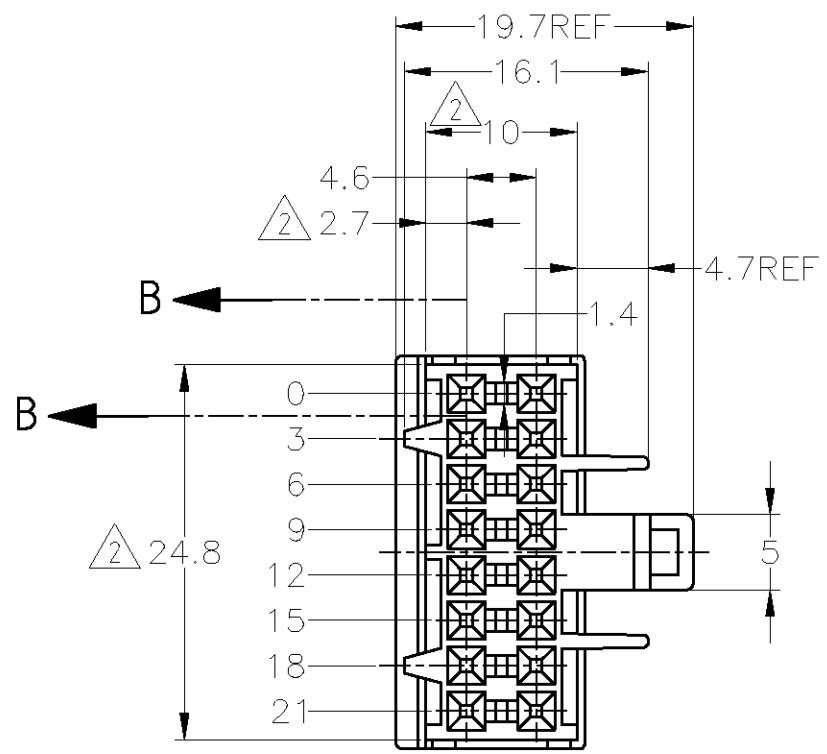
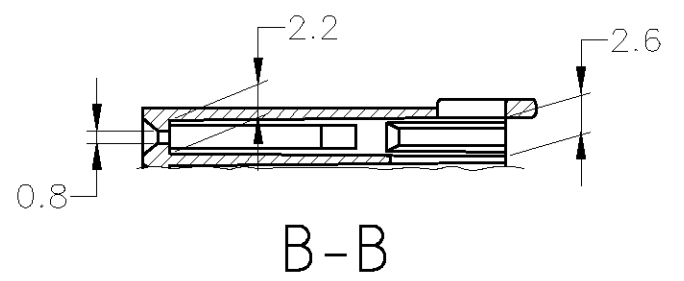


THIS DRAWING IS UNPUBLISHED. RELEASED FOR PUBLICATION  
 © COPYRIGHT BY TYCO ELECTRONICS CORPORATION. ALL INTERNATIONAL RIGHTS RESERVED.

LOC	DIST	REVISIONS					
J	-	P	LTR	DESCRIPTION	DATE	DWN	APVD
		A2		REDRAWN W/CHANGE	ECR-10-000666	12JAN09	TS KB



- 1. 適合ロックプレート型番 172853 (2ヶ)
- 2. [-Z-] 面より2mmの範囲で測定
- 1. PART NUMBER OF SECONDARY LOCKING PLATE 172853 (2 REQUIRED)
- 2. THESE DIMENSIONS TO BE MEASURED BETWEEN [-Z-] AND 2



BLACK	172852-2
COLOR	PART NUMBER

THIS DRAWING IS A CONTROLLED DOCUMENT.		DWN T.SHINOHARA 15APR09	Tyco Electronics Corporation Kawasaki, Japan	
DIMENSIONS: mm		CHK K.BETSUI 15APR09	NAME	
TOLERANCES UNLESS OTHERWISE SPECIFIED:		APVD K.BETSUI 15APR09	PRODUCT SPEC	
0 PLC ± - 1 PLC ± - 2 PLC ± - 3 PLC ± - 4 PLC ± - ANGLES ± -		108-5124	PLUG HOUSING 16POSITION DLI CONNECTOR SECONDARY LOCK TYPE	
MATERIAL 66 NYLON		FINISH -	SIZE A3	CAGE CODE 00779
一般公差 (GENERAL TOLERANCE) 10 ≥ ; ±0.2 30 ≥ > 10 ; ±0.25 100 ≥ > 30 ; ±0.3 ANGLE ; ±3°		APPLICATION SPEC -	DRAWING NO C-172852	RESTRICTED TO -
CUSTOMER DRAWING		WEIGHT -	SCALE 2:1	SHEET 1 OF 1
				REV A2